



National Institute on Alcohol Abuse and Alcoholism
Division of Epidemiology and Prevention Research
Alcohol Epidemiologic Data System

SURVEILLANCE REPORT #90

APPARENT PER CAPITA ALCOHOL CONSUMPTION: NATIONAL, STATE, AND REGIONAL TRENDS, 1977–2008

Robin A. LaVallee, B.A.
Hsiao-ye Yi, Ph.D.

CSR, Incorporated¹
Suite 1000
2107 Wilson Boulevard
Arlington, VA 22201

August 2010

U.S. Department of Health and Human Services
Public Health Service
National Institutes of Health

¹ CSR, Incorporated operates the Alcohol Epidemiologic Data System (AEDS) under Contract No. HHSN267200800023C for the Division of Epidemiology and Prevention Research, National Institute on Alcohol Abuse and Alcoholism (NIAAA). Dr. Rosalind A. Breslow serves as NIAAA Project Officer on the contract.

(Blank page)

HIGHLIGHTS

This surveillance report on 1977–2008 apparent per capita alcohol consumption in the United States is the 24th in a series of consumption reports produced annually by the National Institute on Alcohol Abuse and Alcoholism (NIAAA). Findings are based on alcoholic beverage sales data, either collected directly by the Alcohol Epidemiologic Data System (AEDS) from the States or provided by beverage industry sources. Population data provided by the U.S. Census Bureau are used as denominators to calculate per capita rates.

The following are highlights from the current report, which updates consumption trends through 2008:

- In the United States, per capita consumption of ethanol from all alcoholic beverages combined in 2008 was 2.32 gallons, representing a 0.4 percent increase from 2.31 gallons in 2007.
- Between 2007 and 2008, changes in overall per capita consumption of ethanol included increases in 33 States and the District of Columbia, decreases in 10 States, and no change in 7 States.
- Analysis of overall per capita alcohol consumption by census region between 2007 and 2008 indicated increases of 0.9% in the Midwest and 0.4% in the Northeast.
- Healthy People 2010 has set the national objective for reducing per capita alcohol consumption to no more than 1.96 gallons of ethanol. However, since 1999, there has been a trend of increasing per capita consumption. To meet the 2010 objective, per capita alcohol consumption will need to decrease by 15.5 percent, or about 8.1 percent per year from 2009 through 2010.

INTRODUCTION

This surveillance report on per capita consumption of alcohol in the United States is the 24th in a series of reports that examine alcohol consumption trends on a national, State, and regional basis. Like previous reports on per capita alcohol consumption, it is intended to provide updated alcohol information for policymakers, health care providers, researchers, and others concerned about alcohol issues.

Data presented in this report are related to one of the national objectives set in Healthy People 2010 (U.S. Department of Health and Human Services 2000) for alcohol consumption. This objective is to reduce the national per capita alcohol consumption level to no more than 1.96 gallons of ethanol by 2010 (National Center for Health Statistics 2008).

The current report updates the 1977–2007 alcohol consumption trends (LaVallee et al. 2009) with new data for 2008. Data are presented in three tables. The first one presents national data on trends in beer, wine, and spirits

consumption, as well as on all alcoholic beverages combined. The second table presents data on alcohol consumption for individual States for 2008. States also are ranked in deciles according to per capita ethanol consumption. The third table presents data on consumption trends for each type of beverage and all beverages combined for the States as well as for the four regions—Northeast, Midwest, South, and West—defined by the U.S. Census Bureau.

DATA

Alcohol Consumption Data

AEDS makes every effort to obtain alcoholic beverage sales data from all States and the District of Columbia because sales data more accurately reflect actual consumption of alcoholic beverages than do production and shipments data from beverage industry sources. For 2008, AEDS received complete beverage sales and/or tax receipts reports from 27 States for beer, 26 States for wine, and 25 States for

spirits.¹ For the remaining States and the District of Columbia, shipments data from beverage industry sources (Beverage Information Group 2009*a, b, c*) were used for the numerator to calculate per capita consumption. Although sales and tax receipt data tend to provide slightly lower per capita estimates (about .01 to .02 points per capita), the mixed use of data from sales and shipments sources appears to have little effect on overall trends in per capita alcohol consumption (Campbell et al. 1994).

Population Data

State population estimates for persons ages 14 and older were obtained from Internet releases by the U.S. Census Bureau (2009). These data are used as denominators to calculate the per capita consumption figures.

To make the trend data more precise, AEDS revises data published in previous reports when the Census Bureau makes major revisions to its population estimates. One such revision occurred in the report published in 2003 (Nephew et al. 2003). Beginning with that report, the 1990s population estimates used in the past were replaced with the reestimated intercensal population data that bridge the 1990 and 2000 censuses (U.S. Census Bureau 2002). Because the new population estimates were generally higher than the old estimates, this revision resulted in slight decreases in calculated per capita ethanol consumption for the 1990s (especially the later part of the decade). Although most of these changes are minor, one impact of the revision is the change to the baseline number cited by Healthy People 2010 (U.S. Department

of Health and Human Services 2000) to set the national health objective for reducing per capita alcohol consumption. The baseline year was 1997, the latest data year available at the time the document was prepared. The revised data changed the 1997 baseline number from 2.18 to 2.14 gallons of ethanol per capita. Accordingly, the 2010 national health objective was adjusted from 2.00 to 1.96 gallons of ethanol per capita (National Center for Health Statistics 2008).

METHODS

Conversion of Ethanol Content

AEDS uses an estimate of average ethanol content in the alcoholic beverages to convert the gallons of sold or shipped beer, wine, and spirits into gallons of ethanol (pure alcohol) before calculating per capita consumption estimates. The ethanol conversion coefficients (ECC, i.e., proportion of pure alcohol for each beverage type) are 0.045 for beer, 0.129 for wine, and 0.411 for spirits.

AEDS has considered changes in the alcoholic beverage market that may affect the ECCs used in the current report. For instance, the introduction of “light” beer, “light” wines, and coolers (both wine and spirits) may have slightly lowered the average ethanol content in some alcoholic beverages. Kling (1991, 1989) suggests that there were decreases in the ethanol content of spirits during the 1980s. However, such decreases may be offset by the increase in sales of drinks with higher ethanol content, such as premium brand liquors, fortified wines, malt liquors, and locally produced beers and ales (microbrews). “Ice” beers and “dry” beers, for example, both have higher ethanol content than either premium or light beers (M. Shanken Communications, Inc. 1994). Therefore, changes in the average net ethanol content across all beverages have probably been minimal and not large enough to alter the trends in overall per capita consumption.

¹ The following 33 States provided alcoholic beverage sales data for beer, wine, and/or, spirits for 2008: Alaska, Arizona, Colorado, Connecticut, Florida, Hawaii, Idaho, Illinois, Indiana, Kansas, Kentucky, Louisiana, Maryland, Massachusetts, Minnesota, Missouri, Montana, Nevada, New Hampshire, New Jersey, New Mexico, New York, North Carolina, North Dakota, Ohio, Oregon, Pennsylvania, South Dakota, Texas, Utah, Virginia, Washington, Wyoming.

Recent studies by Kerr and colleagues (2006a, b) estimated national average and State-specific ECCs for beer, wine, and spirits in each year. Their method derived ECCs for each beverage type based on three components of data: (1) market shares for subcategories within the beverage type (e.g., table wine, wine coolers, etc., within wine); (2) market shares for leading brands in each subcategory; and (3) ethanol contents of these leading brands. Their findings suggest that in 2002, the national average ethanol content was 0.0467 for beer, 0.1145 for wine, and 0.3690 for spirits. Their State-specific estimates indicate that ECCs for all beverage types varied by State and over time. AEDS compared per capita consumption estimates derived by Kerr and colleagues with data presented in this surveillance report. Results revealed that cross-State correlations between the two data sets are higher than 0.99 for all three beverage types. Similar patterns also were observed in national trends between the two sets of estimates, although some differences in absolute values existed and fluctuated over time. Given the fact that Kerr and colleagues applied their ECCs to the same AEDS beverage volume data to derive their per capita consumption estimates, it was concluded that consumption trends are mainly driven by beverage volumes rather than changes in the ECC estimates.

Because most of the analyses provided in this surveillance report are focused on consumption trends over time, and because of the time- and labor-intensive nature of estimating the ECC every year for each State, AEDS will continue to use the current fixed set of ECCs. However, we will monitor the market changes by conducting periodic analysis of the ECCs.

Population Denominator

AEDS uses the population of persons ages 14 and older to calculate per capita consumption rates. Although age 14 is below the minimum legal age for the purchase of

alcoholic beverages throughout the United States, most self-report surveys indicate that many 14-year-olds drink alcoholic beverages. For example, data from the NIAAA 2001–2002 National Epidemiologic Survey on Alcohol and Related Conditions indicate that 12.2 percent of current drinkers ages 18 and older in the United States began drinking at age 15 or younger (AEDS 2004). Results from the Monitoring the Future survey in 2008 (Johnston et al. 2009) indicate that 32.1 percent of eighth graders (13- to 14-year-olds) reported past-year use of alcohol (i.e., beyond a few sips). Also, using data from the National Survey on Drug Use and Health in 2007, Chen and colleagues (2009) found the median age of initiation of alcohol use among 12- to 20-year-olds to be 14.

Limitations

Individuals familiar with survey reports and other scientific literature often are accustomed to the presentation of significance tests, or confidence intervals, on any data comparisons or trends. However, because data presented in this report are based on total actual sales and/or shipments, no measures of statistical significance are provided. Nonetheless, it is important to note that these data are still only estimates and may be subject to reporting error.

In addition to ECCs, many factors may result in inaccuracies in estimates of per capita alcohol consumption. For instance, these estimates in some States may be inflated by such factors as cross-border sales to buyers from neighboring States (e.g., in New Hampshire) or tourists' consumption of alcohol (e.g., in Washington D.C.). Other factors include: variation in State reporting practices for sales of alcoholic beverages; time delay between State taxation records and actual consumption; exclusion of alcohol contained in medications and foods; unrecorded legal home production; and illicit production, importation, and sales. These factors are discussed in detail in the latest AEDS data reference manual (DRM) on per capita alcohol consumption (Nephew et al.

2004). The DRM can be ordered on NIAAA's Web site <http://www.niaaa.nih.gov>.

REFERENCES

- Alcohol Epidemiologic Data System (AEDS). Unpublished data from the 2001–2002 National Epidemiologic Survey on Alcohol and Related Conditions, National Institute on Alcohol Abuse and Alcoholism, 2004.
- Beverage Information Group. *Beer Handbook, 2009*. Norwalk, CT: Beverage Information Group, 2009a.
- Beverage Information Group. *Liquor Handbook, 2009*. Norwalk, CT: Beverage Information Group, 2009b.
- Beverage Information Group. *Wine Handbook, 2009*. Norwalk, CT: Beverage Information Group, 2009c.
- Campbell, K.E.; Clem, D.; and Williams, G.D. Technical report: 1986–91 per capita ethanol consumption trends using beverage industry shipments data compared to combined sales/tax receipt and shipments data. Working paper prepared by the Alcohol Epidemiologic Data System, NIAAA, Washington, DC, August 1994.
- Chen, C.M.; Yi, H.; Williams, G.D.; and Faden, V.B. *Surveillance Report #86: Trends in Underage Drinking in the United States, 1991–2007*. Rockville, MD: NIAAA, Division of Epidemiology and Prevention Research, Alcohol Epidemiologic Data System, January 2009.
- Hyman, M.; Zimmerman, M.; Gurioli, C.; and Helrich, A. *Drinkers, Drinking and Alcohol-Related Mortality and Hospitalizations: A Statistical Compendium, 1980 Edition*. New Brunswick, NJ: Rutgers University, 1980.
- Johnston, L.D.; O'Malley, P.M.; Bachman, J.G.; and Schulenberg, J.E. *Monitoring the Future, National Results on Adolescent Drug Use: Overview of Key Findings, 2008*. (NIH Publication No. 09-7401). Bethesda, MD: National Institute on Drug Abuse, 2009.
- Kerr, W.C.; Greenfield, T.K.; Tujague, J.; and Brown, S.E. The alcohol content of wine consumed in the US and per capita consumption: New estimates reveal different trends. *Alcoholism: Clinical and Experimental Research* 30(3):516–522, 2006a.
- Kerr, W.C.; Greenfield, T.K.; and Tujague, J. Estimates of the mean alcohol concentration of the spirits, wine, and beer sold in the United States and per capita consumption: 1950 to 2002. *Alcoholism: Clinical and Experimental Research* 30(9): 1583–1591, 2006b.
- Kling, W. Errata: Measurement of ethanol consumed in distilled spirits. *Journal of Studies on Alcohol* 52:503–504, 1991.
- Kling, W. Measurement of ethanol consumed in distilled spirits. *Journal of Studies on Alcohol* 50:456–460, 1989.
- LaVallee, R.A.; Williams, G.D.; and Yi, H. *Surveillance Report #87: Apparent Per Capita Alcohol Consumption: National, State, and Regional Trends, 1977–2007*. Rockville, MD: NIAAA, Division of Epidemiology and Prevention Research, Alcohol Epidemiologic Data System, September 2009.
- M. Shanken Communications, Inc. *The U.S. Beer Market: Impact Databank Review and Forecast, 1994 Edition*. New York: Shanken, 1994.
- National Center for Health Statistics. (2008). *Data2010: The Healthy People 2010 Database* (May, 2008 Edition) [Interactive database]. Available from National Center for Health Statistics website, <http://www.cdc.gov/nchs>.
- Nephew, T.M.; Williams, G.D.; Yi, H.; Hoy, A.K.; Stinson, F.S.; and Dufour, M. *Surveillance Report #59: Apparent Per Capita Alcohol Consumption: National, State, and Regional Trends, 1977–2000*. Rockville, MD: NIAAA, Division of Biometry and Epidemiology, Alcohol Epidemiologic Data System, September 2003.
- Nephew, T.M.; Yi, H.; Williams, G.D.; Stinson, F.S.; and Dufour, M.C. *Alcohol Epidemiologic Data Reference Manual, Vol. 1, 4th Edition, U.S. Apparent Consumption of Alcoholic Beverages Based on State Sales, Taxation, or Receipt Data*. NIH Publication No. 04-5563. Bethesda, MD: National Institutes of Health, National Institute on Alcohol Abuse and Alcoholism, Alcohol Epidemiologic Data System, June 2004.
- U.S. Census Bureau, Population Division. *Estimates and Projections Area Documentation: State and County Total Population Estimates*, Washington, D.C.: U.S. Census Bureau, Internet release, December 2002.
- U.S. Census Bureau, Population Division. *Estimates of the Resident Population by Single-Year of Age and Sex for the United States and States: July 1, 2008* (SC-EST2008-AGESEX_RES). Washington, D.C.: U.S. Census Bureau, Internet release, May 14, 2009.
- U.S. Department of Health and Human Services. *Healthy People 2010. 2nd Ed. With Understanding and Improving Health and Objectives for Improving Health*. 2 vols. Washington, DC: U.S. Government Printing Office, November 2000.

List of Figures

		Page
Figure 1	Total per capita ethanol consumption, United States, 1935–2008.....	6
Figure 2	Per capita ethanol consumption by beverage type, United States, 1977–2008.....	6
Figure 3	Percent change in per capita ethanol consumption, United States, 1977–2008.....	7
Figure 4	Total per capita consumption of gallons of ethanol by State, United States, 2008	8
Figure 5	Percentage change in total per capita ethanol consumption by State, United States, 2007–2008	8
Figure 6	Total per capita ethanol consumption by region, United States, 1977–2008.....	9
Figure 7	Per capita ethanol consumption from beer by region, United States, 1977–2008.....	9
Figure 8	Per capita ethanol consumption from wine by region, United States, 1977–2008.....	10
Figure 9	Per capita ethanol consumption from spirits by region, United States, 1977–2008.....	10

List of Tables

		Page
Table 1	Apparent per capita ethanol consumption, United States, 1850–2008	11
Table 2	Apparent alcohol consumption for States, census regions, and the United States, 2008	13
Table 3	Per capita ethanol consumption for States, census regions, and the United States, 1977–2008	15

Figure 1. Total per capita ethanol consumption, United States, 1935–2008

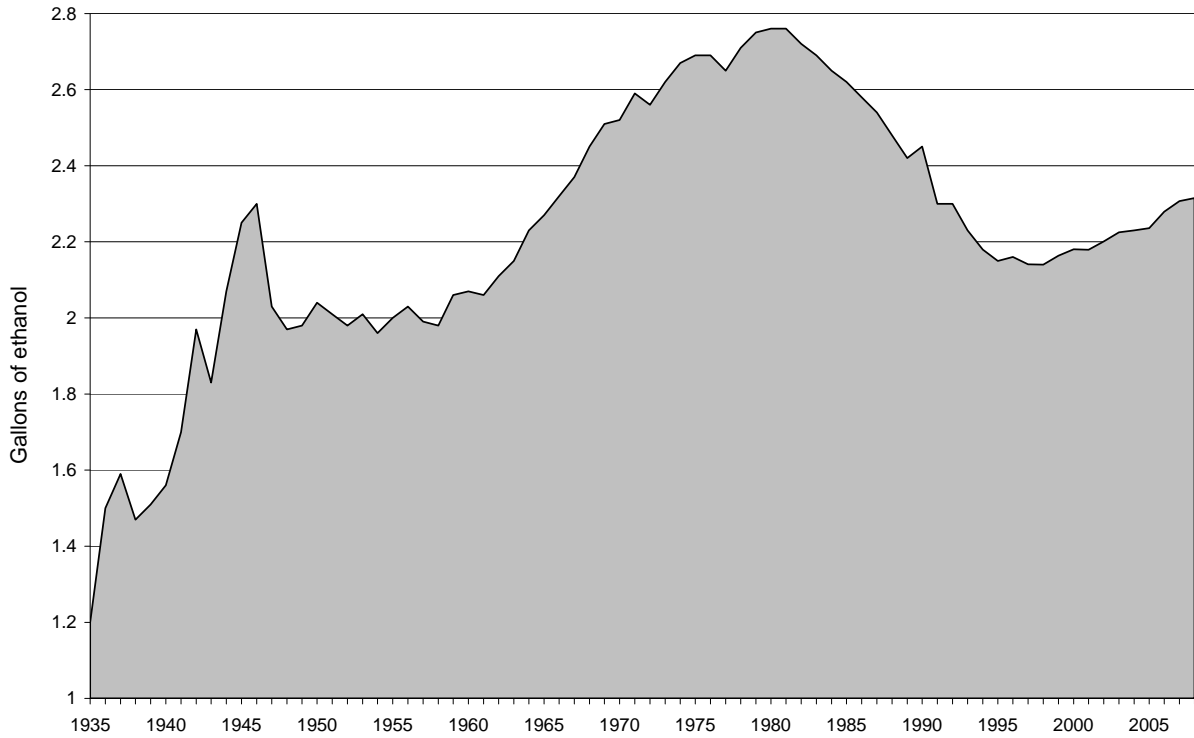


Figure 2. Per capita ethanol consumption by beverage type, United States, 1977–2008

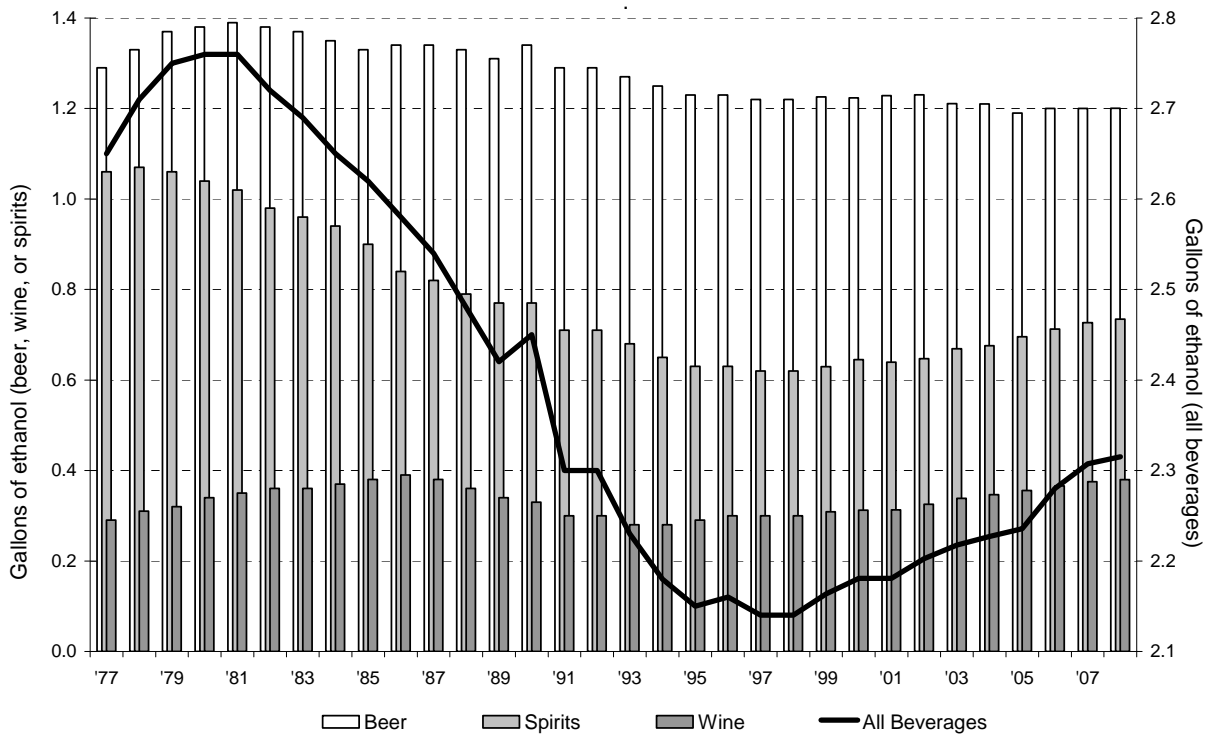


Figure 3. Percent change in per capita ethanol consumption, United States, 1977–2008

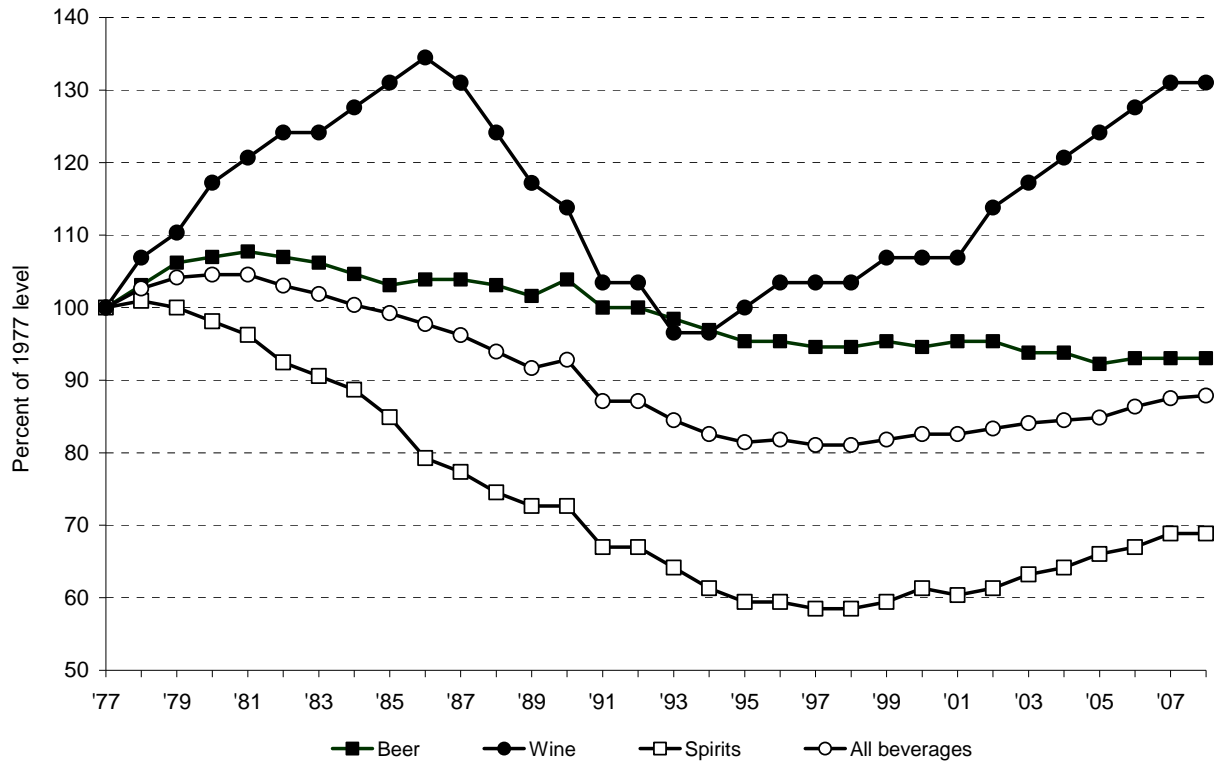


Figure 4. Total per capita consumption of gallons of ethanol by State, United States, 2008.

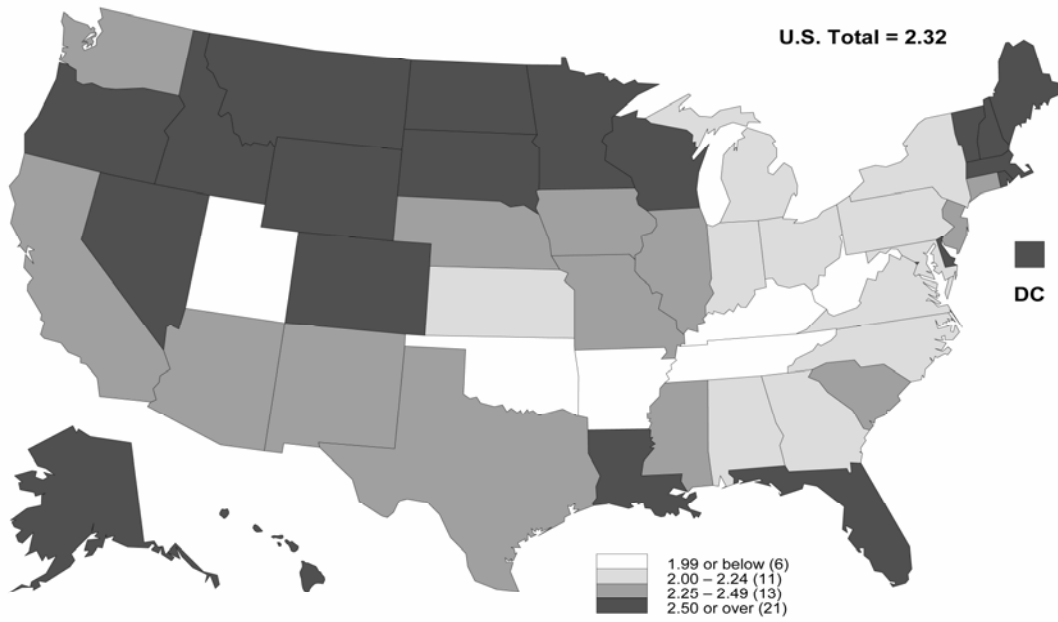


Figure 5. Percentage change in total per capita ethanol consumption by State, United States, 2007–2008.

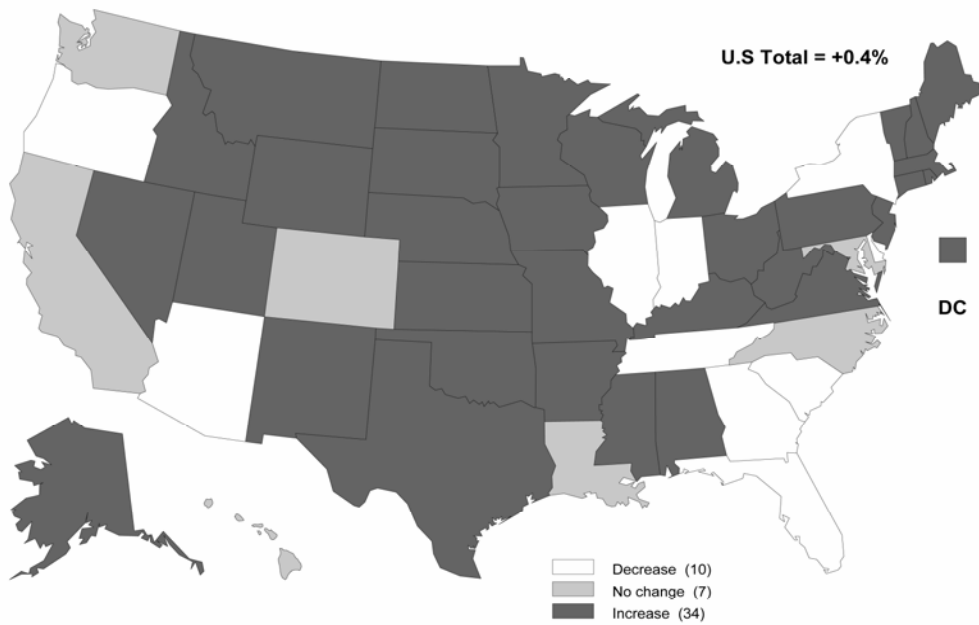


Figure 6. Total per capita ethanol consumption by region, United States, 1977–2008

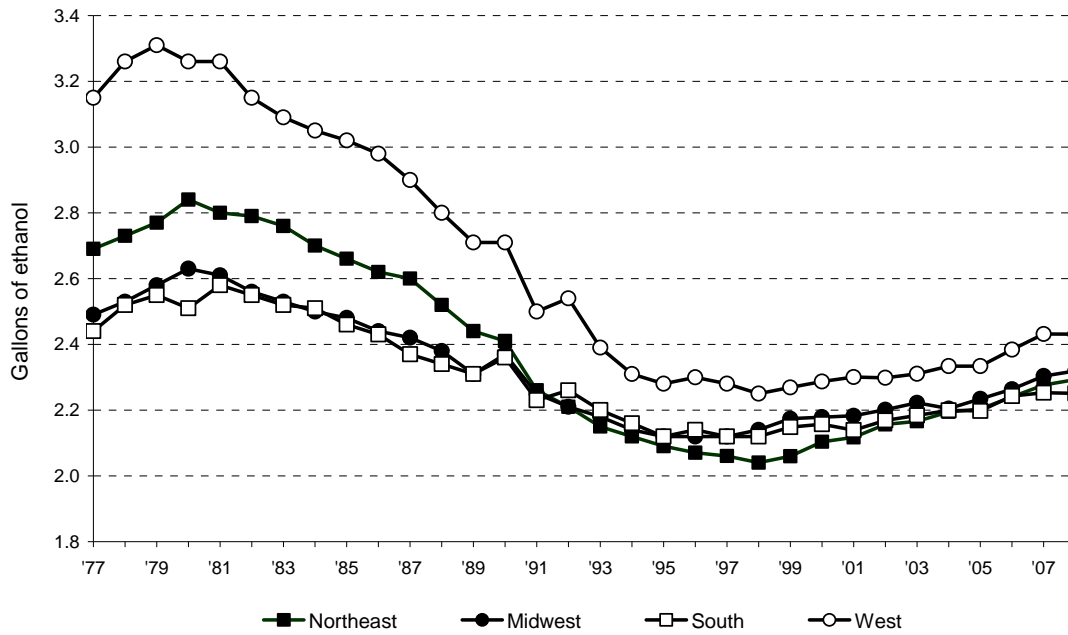


Figure 7. Per capita ethanol consumption from beer by region, United States, 1977–2008

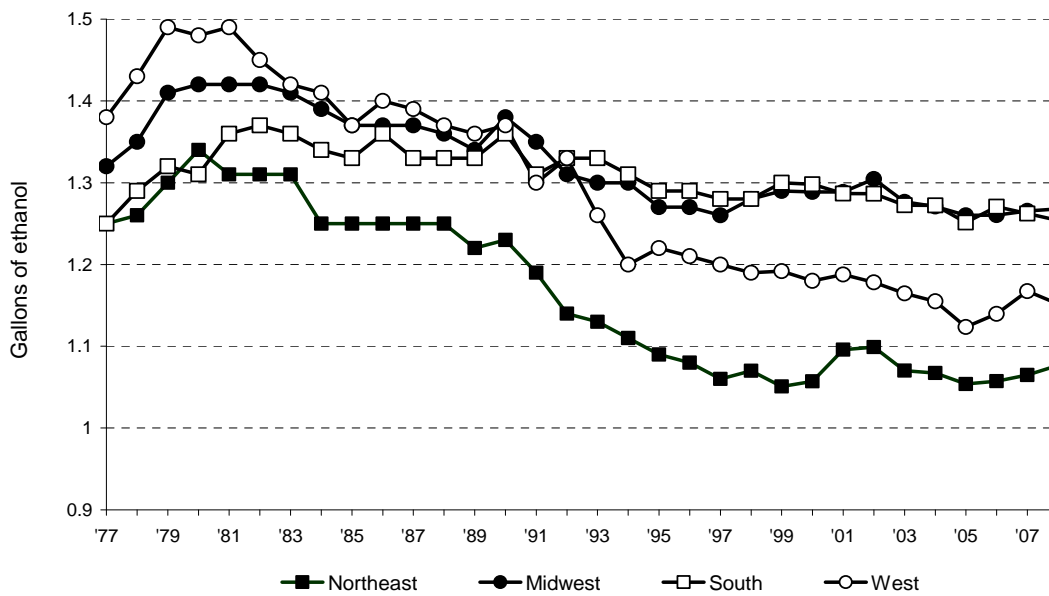


Figure 8. Per capita ethanol consumption from wine by region, United States, 1977–2008

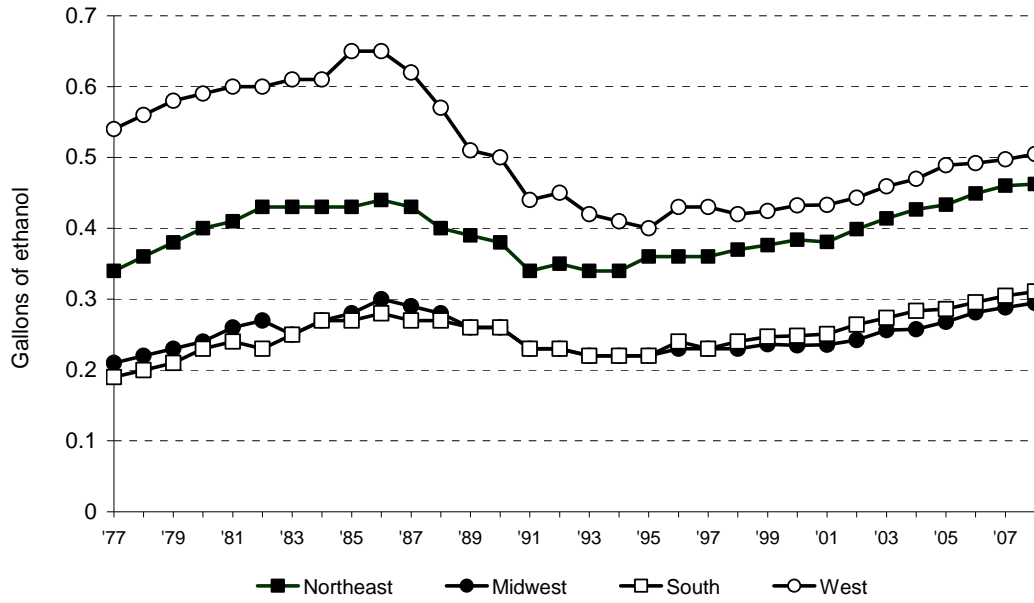


Figure 9. Per capita ethanol consumption from spirits by region, United States, 1977–2008

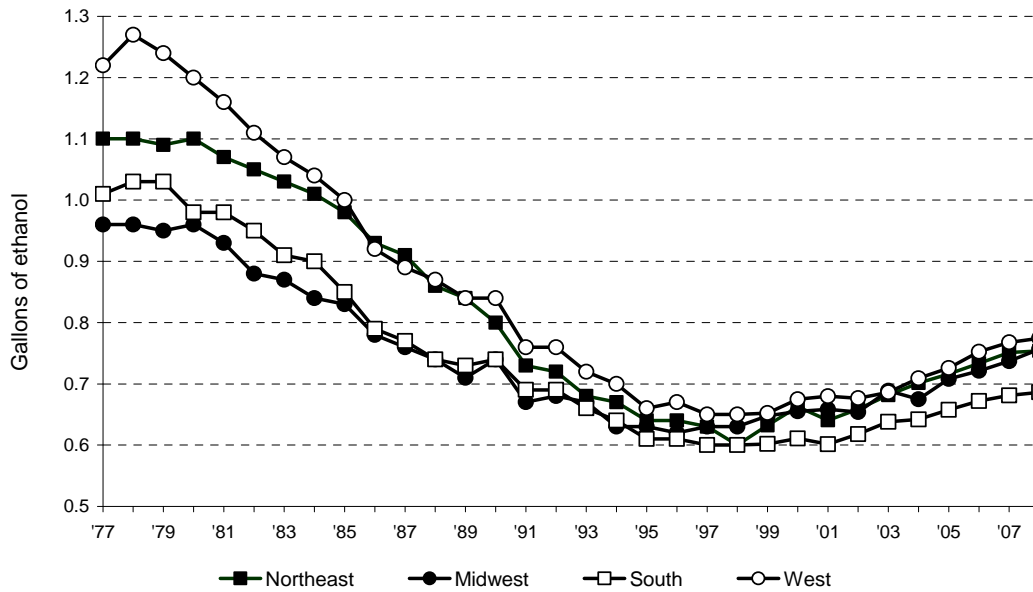


Table 1. Apparent per capita ethanol consumption, United States, 1850–2008. [Gallons of ethanol, based on population age 15 and older prior to 1970 and on population age 14 and older thereafter]

Year	Beer	Wine	Spirits	All beverages
2008	1.20	0.38	0.73	2.32
2007	1.20	0.38	0.73	2.31
2006	1.20	0.37	0.71	2.28
2005	1.19	0.36	0.70	2.24
2004	1.21	0.35	0.68	2.23
2003	1.21	0.34	0.67	2.22
2002	1.23	0.33	0.65	2.20
2001	1.23	0.31	0.64	2.18
2000	1.22	0.31	0.65	2.18
1999	1.23	0.31	0.63	2.16
1998	1.22	0.30	0.62	2.14
1997	1.22	0.30	0.62	2.14
1996	1.23	0.30	0.63	2.16
1995	1.23	0.29	0.63	2.15
1994	1.25	0.28	0.65	2.18
1993	1.26	0.28	0.68	2.23
1992	1.29	0.30	0.71	2.30
1991	1.29	0.30	0.71	2.30
1990	1.34	0.33	0.77	2.45
1989	1.31	0.34	0.77	2.42
1988	1.33	0.36	0.79	2.48
1987	1.34	0.38	0.82	2.54
1986	1.34	0.39	0.84	2.58
1985	1.33	0.38	0.90	2.62
1984	1.35	0.37	0.94	2.65
1983	1.37	0.36	0.96	2.69
1982	1.38	0.36	0.98	2.72
1981	1.39	0.35	1.02	2.76
1980	1.38	0.34	1.04	2.76
1979	1.37	0.32	1.06	2.75
1978	1.33	0.31	1.07	2.71
1977	1.29	0.29	1.06	2.64
1976	1.27	0.32	1.10	2.69
1975	1.26	0.32	1.11	2.69
1974	1.25	0.31	1.11	2.67
1973	1.20	0.31	1.10	2.62
1972	1.17	0.30	1.09	2.56
1971	1.15	0.31	1.12	2.59
1970	1.14	0.27	1.11	2.52
1969	1.12	0.26	1.13	2.51
1968	1.09	0.26	1.10	2.45
1967	1.07	0.25	1.05	2.37
1966	1.06	0.24	1.02	2.32
1965	1.04	0.24	0.99	2.27
1964	1.04	0.24	0.95	2.23
1963	1.01	0.23	0.91	2.15
1962	0.99	0.22	0.90	2.11
1961	0.97	0.23	0.86	2.06
1960	0.99	0.22	0.86	2.07
1959	1.00	0.22	0.84	2.06
1958	0.96	0.22	0.80	1.98
1957	0.97	0.22	0.80	1.99
1956	1.00	0.22	0.81	2.03

Numbers may not sum because of rounding.

Table 1. Apparent per capita ethanol consumption, United States, 1850–2008. [Gallons of ethanol, based on population age 15 and older prior to 1970 and on population age 14 and older thereafter] (Continued)

Year	Beer	Wine	Spirits	All beverages
1955	1.01	0.22	0.77	2.00
1954	1.01	0.21	0.74	1.96
1953	1.04	0.20	0.77	2.01
1952	1.04	0.21	0.73	1.98
1951	1.03	0.20	0.78	2.01
1950	1.04	0.23	0.77	2.04
1949	1.06	0.22	0.70	1.98
1948	1.07	0.20	0.70	1.97
1947	1.11	0.16	0.76	2.03
1946	1.07	0.24	0.99	2.30
1945	1.17	0.20	0.88	2.25
1944	1.13	0.18	0.76	2.07
1943	1.00	0.17	0.66	1.83
1942	0.90	0.22	0.85	1.97
1941	0.81	0.18	0.71	1.70
1940	0.73	0.16	0.67	1.56
1939	0.75	0.14	0.62	1.51
1938	0.75	0.13	0.59	1.47
1937	0.82	0.13	0.64	1.59
1936	0.79	0.12	0.59	1.50
1935	0.68	0.09	0.43	1.20
1934	0.61	0.07	0.29	0.97
(Prohibition)				
1916–1919	1.08	0.12	0.76	1.96
1911–1915	1.48	0.14	0.94	2.56
1906–1910	1.47	0.17	0.96	2.60
1901–1905	1.31	0.13	0.95	2.39
1896–1900	1.19	0.10	0.77	2.06
1891–1895	1.17	0.11	0.95	2.23
1881–1890	0.90	0.14	0.95	1.99
1871–1880	0.56	0.14	1.02	1.72
1870	0.44	0.10	1.53	2.07
1860	0.27	0.10	2.16	2.53
1850	0.14	0.08	1.88	2.10

Numbers may not sum because of rounding.

Note: Data prior to 1977 are from: Hyman, M.; Zimmerman, M.; Gurioli, C.; and Helrich, A. *Drinkers, Drinking and Alcohol-Related Mortality and Hospitalizations: A Statistical Compendium, 1980 edition*. New Brunswick, NJ: Rutgers University, 1980.

Table 2. Apparent alcohol consumption for States, census regions, and the United States, 2008. [Volume and ethanol in thousands of gallons, per capita ethanol consumption in gallons, based on population age 14 and older]

State or other geographic area	Beer			Wine			Spirits			All beverages		
	Volume	Ethanol	Per capita	Volume	Ethanol	Per capita	Volume	Ethanol	Per capita	Ethanol	Per capita	U.S. decile
Alabama	104,738	4,713	1.24	6,535	843	0.22	5,329	2,190	0.58	7,746	2.04	9
Alaska	14,583	656	1.20	2,092	270	0.49	1,448	595	1.09	1,521	2.77	2
Arizona	145,012	6,526	1.27	15,871	2,047	0.40	9,348	3,842	0.75	12,415	2.41	5
Arkansas	56,948	2,563	1.11	3,039	392	0.17	3,365	1,383	0.60	4,338	1.88	10
California	701,573	31,571	1.07	126,319	16,295	0.55	51,963	21,357	0.72	69,223	2.34	6
Colorado.....	112,597	5,067	1.27	14,339	1,850	0.46	9,850	4,048	1.01	10,965	2.75	2
Connecticut	60,294	2,713	0.94	13,099	1,690	0.59	6,043	2,484	0.86	6,887	2.39	6
Delaware	21,645	974	1.36	3,233	417	0.58	2,168	891	1.25	2,282	3.20	1
Dist. of Columb.	15,008	675	1.34	3,928	507	1.00	1,997	821	1.63	2,003	3.97	1
Florida	425,141	19,131	1.25	57,626	7,434	0.49	33,496	13,767	0.90	40,332	2.64	3
Georgia	193,455	8,705	1.13	14,919	1,925	0.25	12,017	4,939	0.64	15,569	2.02	9
Hawaii	31,973	1,439	1.35	4,341	560	0.52	1,930	793	0.74	2,792	2.62	4
Idaho	30,682	1,381	1.15	7,522	970	0.81	2,018	829	0.69	3,180	2.65	3
Illinois	281,477	12,666	1.21	30,495	3,934	0.38	18,528	7,615	0.73	24,215	2.32	6
Indiana	127,191	5,724	1.11	9,775	1,261	0.24	9,232	3,794	0.74	10,779	2.09	8
Iowa.....	77,130	3,471	1.41	3,298	425	0.17	4,204	1,728	0.70	5,624	2.29	7
Kansas	60,884	2,740	1.21	2,506	323	0.14	3,576	1,470	0.65	4,533	2.01	9
Kentucky	80,128	3,606	1.03	4,740	611	0.18	5,515	2,267	0.65	6,484	1.86	10
Louisiana.....	123,255	5,546	1.56	7,314	944	0.27	7,170	2,947	0.83	9,437	2.65	3
Maine	31,208	1,404	1.26	3,636	469	0.42	2,206	907	0.82	2,780	2.50	5
Maryland	101,916	4,586	0.99	12,888	1,663	0.36	9,563	3,930	0.85	10,179	2.21	7
Massachusetts	128,885	5,800	1.07	25,899	3,341	0.62	11,028	4,533	0.84	13,673	2.53	4
Michigan	203,940	9,177	1.12	19,065	2,459	0.30	15,881	6,527	0.80	18,164	2.22	7
Minnesota.....	114,265	5,142	1.21	12,056	1,555	0.37	10,629	4,368	1.03	11,066	2.60	4
Mississippi.....	75,825	3,412	1.45	2,138	276	0.12	4,015	1,650	0.70	5,338	2.28	7
Missouri.....	141,319	6,359	1.32	11,247	1,451	0.30	9,440	3,880	0.80	11,690	2.42	5
Montana	29,788	1,340	1.68	2,168	280	0.35	1,703	700	0.87	2,320	2.90	2
Nebraska.....	47,003	2,115	1.47	2,285	295	0.21	2,373	975	0.68	3,385	2.36	6
Nevada.....	77,528	3,489	1.68	10,163	1,311	0.63	6,696	2,752	1.33	7,552	3.64	1
New Hampshire	41,670	1,875	1.71	6,912	892	0.81	4,770	1,961	1.79	4,727	4.31	1

Decile values (1 = highest) apply only to State-level data. Numbers may not sum because of rounding.

Table 2. Apparent alcohol consumption for States, census regions, and the United States, 2008. [Volume and ethanol in thousands of gallons, per capita ethanol consumption in gallons, based on population age 14 and older] (Continued)

State or other geographic area	Beer			Wine			Spirits			All beverages		
	Volume	Ethanol	Per capita	Volume	Ethanol	Per capita	Volume	Ethanol	Per capita	Ethanol	Per capita	U.S. decile
New Jersey	148,162	6,667	0.94	30,531	3,938	0.55	14,951	6,145	0.86	16,751	2.35	6
New Mexico.....	50,786	2,285	1.43	3,885	501	0.31	2,807	1,154	0.72	3,940	2.47	5
New York.....	328,562	14,785	0.92	58,190	7,506	0.47	26,438	10,866	0.67	33,158	2.05	8
North Carolina .	189,195	8,514	1.14	19,777	2,551	0.34	10,473	4,304	0.58	15,369	2.06	8
North Dakota ...	19,319	869	1.63	970	125	0.24	1,471	605	1.14	1,599	3.00	1
Ohio.....	275,310	12,389	1.32	18,949	2,444	0.26	10,519	4,323	0.46	19,157	2.04	9
Oklahoma.....	80,190	3,609	1.23	4,033	520	0.18	4,152	1,706	0.58	5,835	1.99	9
Oregon	84,291	3,793	1.21	11,825	1,525	0.49	6,255	2,571	0.82	7,889	2.53	4
Pennsylvania...	312,593	14,067	1.36	18,787	2,424	0.23	15,227	6,258	0.60	22,749	2.19	8
Rhode Island ...	22,073	993	1.13	3,649	471	0.54	1,946	800	0.91	2,264	2.58	4
South Carolina	114,615	5,158	1.41	6,902	890	0.24	6,852	2,816	0.77	8,864	2.42	5
South Dakota...	22,523	1,014	1.56	1,121	145	0.22	1,359	559	0.86	1,717	2.64	3
Tennessee	123,840	5,573	1.10	8,026	1,035	0.20	7,040	2,893	0.57	9,502	1.87	10
Texas	607,652	27,344	1.44	40,523	5,228	0.27	26,923	11,065	0.58	43,637	2.29	7
Utah.....	34,043	1,532	0.75	2,677	345	0.17	2,276	936	0.46	2,813	1.37	10
Vermont.....	16,043	722	1.37	2,522	325	0.62	909	374	0.71	1,421	2.70	3
Virginia	160,387	7,217	1.14	20,761	2,678	0.42	9,074	3,729	0.59	13,625	2.14	8
Washington	130,185	5,858	1.09	20,939	2,701	0.50	9,863	4,054	0.76	12,613	2.35	6
West Virginia ...	42,615	1,918	1.26	1,194	154	0.10	1,629	670	0.44	2,741	1.80	10
Wisconsin	157,748	7,099	1.53	12,043	1,554	0.34	12,640	5,195	1.12	13,847	2.99	2
Wyoming	14,849	668	1.54	766	99	0.23	1,184	487	1.12	1,254	2.89	2
<i>Regions</i>												
Northeast.....	1,089,490	49,027	1.08	163,224	21,056	0.46	83,519	34,326	0.75	104,409	2.29	
Midwest.....	1,528,109	68,765	1.27	123,810	15,972	0.29	99,853	41,039	0.76	125,776	2.32	
South.....	2,516,552	113,245	1.25	217,577	28,067	0.31	150,778	61,970	0.69	203,282	2.25	
West.....	1,457,891	65,605	1.15	222,906	28,755	0.50	107,341	44,117	0.77	138,477	2.43	
U.S. total	6,592,042	296,642	1.20	727,518	93,850	0.38	441,491	181,453	0.73	571,944	2.32	

Decile values (1 = highest) apply only to State-level data. Numbers may not sum because of rounding.

Table 3. Per capita ethanol consumption for States, census regions, and the United States, 1977–2008. [Gallons of ethanol, based on population age 14 and older] (Continued)

State or other geographic area	Per capita consumption				U.S. decile for all beverages
	Beer	Wine	Spirits	All beverages	
Alabama					
2008.....	1.24	0.22	0.58	2.04	9
2007.....	1.24	0.22	0.56	2.02	9
2006.....	1.22	0.21	0.55	1.97	9
2005.....	1.18	0.20	0.53	1.91	9
2004.....	1.19	0.20	0.52	1.90	9
2003.....	1.18	0.19	0.52	1.89	9
2002.....	1.18	0.21	0.53	1.92	9
2001.....	1.16	0.17	0.53	1.86	9
2000.....	1.19	0.18	0.51	1.88	9
1999.....	1.18	0.17	0.51	1.87	9
1998.....	1.16	0.17	0.51	1.85	9
1997.....	1.14	0.15	0.52	1.81	9
1996.....	1.17	0.15	0.53	1.86	9
1995.....	1.14	0.15	0.53	1.81	9
1994.....	1.16	0.17	0.54	1.87	9
1993.....	1.14	0.17	0.56	1.86	9
1992.....	1.02	0.19	0.59	1.79	10
1991.....	1.00	0.17	0.59	1.76	10
1990.....	1.12	0.18	0.61	1.92	9
1989.....	1.10	0.17	0.60	1.87	9
1988.....	1.10	0.18	0.61	1.89	9
1987.....	1.10	0.18	0.61	1.89	9
1986.....	1.09	0.18	0.64	1.90	9
1985.....	1.06	0.17	0.67	1.90	9
1984.....	1.02	0.19	0.69	1.90	10
1983.....	1.01	0.17	0.71	1.89	10
1982.....	1.00	0.18	0.72	1.89	10
1981.....	1.00	0.19	0.73	1.92	10
1980.....	0.96	0.16	0.74	1.86	10
1979.....	0.98	0.12	0.84	1.94	10
1978.....	0.98	0.12	0.88	1.97	9
1977.....	0.99	0.13	0.84	1.96	9
Alaska					
2008.....	1.20	0.49	1.09	2.77	2
2007.....	1.13	0.44	1.07	2.64	3
2006.....	1.24	0.46	1.02	2.73	2
2005.....	1.24	0.43	0.99	2.65	2
2004.....	1.32	0.45	0.96	2.73	2
2003.....	1.27	0.37	0.79	2.43	3
2002.....	1.36	0.43	1.08	2.87	1
2001.....	1.34	0.40	0.97	2.71	2
2000.....	1.35	0.37	0.92	2.63	2
1999.....	1.45	0.40	0.98	2.82	1
1998.....	1.37	0.39	0.98	2.74	1
1997.....	1.31	0.36	0.88	2.56	2
1996.....	1.31	0.38	0.94	2.63	2
1995.....	1.45	0.39	1.02	2.86	1
1994.....	1.53	0.40	1.10	3.03	1
1993.....	1.31	0.32	0.92	2.55	2
1992.....	1.53	0.41	1.08	3.02	1
1991.....	1.54	0.43	1.14	3.11	1
1990.....	1.62	0.46	1.25	3.33	1

Decile values (1 = highest) apply only to State-level data. Numbers may not sum because of rounding.

Table 3. Per capita ethanol consumption for States, census regions, and the United States, 1977–2008. [Gallons of ethanol, based on population age 14 and older] (Continued)

State or other geographic area	Per capita consumption				U.S. decile for all beverages
	Beer	Wine	Spirits	All beverages	
1989.....	1.57	0.46	1.24	3.27	1
1988.....	1.60	0.49	1.23	3.32	1
1987.....	1.64	0.54	1.29	3.46	1
1986.....	1.68	0.56	1.27	3.51	1
1985.....	1.68	0.58	1.53	3.78	1
1984.....	1.73	0.58	1.56	3.86	1
1983.....	1.76	0.61	1.70	4.06	1
1982.....	1.75	0.56	1.74	4.05	1
1981.....	1.71	0.57	1.82	4.10	1
1980.....	1.55	0.50	1.70	3.76	1
1979.....	1.50	0.47	1.65	3.62	1
1978.....	1.39	0.45	1.68	3.52	2
1977.....	1.19	0.42	1.70	3.31	2
Arizona					
2008.....	1.27	0.40	0.75	2.41	5
2007.....	1.36	0.33	0.76	2.45	5
2006.....	1.31	0.37	0.78	2.47	5
2005.....	1.33	0.39	0.74	2.47	3
2004.....	1.39	0.33	0.70	2.43	4
2003.....	1.41	0.37	0.71	2.48	3
2002.....	1.46	0.33	0.69	2.49	3
2001.....	1.47	0.33	0.70	2.50	3
2000.....	1.48	0.31	0.71	2.50	3
1999.....	1.47	0.34	0.69	2.51	2
1998.....	1.44	0.32	0.68	2.44	2
1997.....	1.45	0.31	0.68	2.44	2
1996.....	1.52	0.33	0.73	2.58	2
1995.....	1.47	0.29	0.68	2.44	3
1994.....	1.52	0.29	0.70	2.50	2
1993.....	1.58	0.27	0.76	2.62	2
1992.....	1.58	0.31	0.80	2.69	2
1991.....	1.58	0.35	0.78	2.71	2
1990.....	1.59	0.37	0.80	2.77	3
1989.....	1.68	0.36	0.85	2.89	2
1988.....	1.64	0.42	0.88	2.94	2
1987.....	1.67	0.46	0.86	2.99	2
1986.....	1.77	0.46	0.91	3.14	2
1985.....	1.67	0.46	1.00	3.12	2
1984.....	1.57	0.45	1.06	3.08	3
1983.....	1.62	0.44	1.00	3.06	3
1982.....	1.74	0.40	0.99	3.13	3
1981.....	1.78	0.42	1.01	3.22	3
1980.....	1.69	0.36	0.98	3.03	4
1979.....	1.86	0.39	1.17	3.42	2
1978.....	1.77	0.37	1.10	3.25	2
1977.....	1.70	0.34	1.05	3.10	3
Arkansas					
2008.....	1.11	0.17	0.60	1.88	10
2007.....	1.07	0.17	0.60	1.84	10
2006.....	1.07	0.17	0.59	1.82	10
2005.....	1.05	0.16	0.58	1.79	10
2004.....	1.07	0.15	0.58	1.80	10
2003.....	1.06	0.14	0.56	1.76	10
2002.....	1.07	0.14	0.53	1.73	10
2001.....	1.06	0.13	0.53	1.72	10
2000.....	1.09	0.12	0.53	1.74	10

Decile values (1 = highest) apply only to State-level data. Numbers may not sum because of rounding.

Table 3. Per capita ethanol consumption for States, census regions, and the United States, 1977–2008. [Gallons of ethanol, based on population age 14 and older] (Continued)

State or other geographic area	Per capita consumption				U.S. decile for all beverages
	Beer	Wine	Spirits	All beverages	
1999.....	1.09	0.12	0.54	1.75	10
1998.....	1.10	0.11	0.51	1.73	10
1997.....	1.08	0.12	0.52	1.71	10
1996.....	1.10	0.12	0.53	1.75	9
1995.....	1.08	0.12	0.51	1.70	10
1994.....	1.06	0.13	0.46	1.65	10
1993.....	1.10	0.11	0.58	1.79	9
1992.....	1.13	0.12	0.65	1.90	9
1991.....	1.12	0.11	0.58	1.81	9
1990.....	1.12	0.13	0.61	1.86	9
1989.....	1.08	0.13	0.57	1.78	9
1988.....	1.07	0.14	0.53	1.74	10
1987.....	1.08	0.11	0.53	1.71	10
1986.....	1.06	0.09	0.48	1.63	10
1985.....	1.03	0.13	0.58	1.75	10
1984.....	1.02	0.12	0.64	1.78	10
1983.....	1.03	0.13	0.63	1.78	10
1982.....	1.03	0.12	0.63	1.78	10
1981.....	1.06	0.12	0.68	1.87	10
1980.....	1.00	0.12	0.69	1.81	10
1979.....	0.93	0.10	0.57	1.60	10
1978.....	0.97	0.11	0.73	1.82	10
1977.....	0.92	0.10	0.63	1.65	10
California					
2008.....	1.07	0.55	0.72	2.34	6
2007.....	1.07	0.55	0.72	2.34	6
2006.....	1.05	0.54	0.70	2.29	6
2005.....	1.02	0.53	0.68	2.23	6
2004.....	1.06	0.51	0.67	2.24	6
2003.....	1.06	0.50	0.65	2.22	6
2002.....	1.07	0.49	0.63	2.20	6
2001.....	1.08	0.48	0.64	2.20	6
2000.....	1.07	0.48	0.64	2.19	6
1999.....	1.10	0.46	0.62	2.18	6
1998.....	1.10	0.45	0.61	2.17	6
1997.....	1.12	0.50	0.62	2.24	5
1996.....	1.11	0.49	0.64	2.24	5
1995.....	1.14	0.45	0.64	2.23	4
1994.....	1.09	0.47	0.68	2.24	5
1993.....	1.17	0.48	0.69	2.35	4
1992.....	1.28	0.51	0.75	2.54	3
1991.....	1.22	0.49	0.75	2.46	4
1990.....	1.32	0.59	0.87	2.78	2
1989.....	1.31	0.61	0.87	2.79	2
1988.....	1.34	0.68	0.89	2.90	2
1987.....	1.36	0.74	0.93	3.03	2
1986.....	1.36	0.79	0.96	3.11	2
1985.....	1.32	0.78	1.02	3.12	2
1984.....	1.38	0.74	1.07	3.19	2
1983.....	1.37	0.75	1.11	3.23	2
1982.....	1.37	0.72	1.14	3.23	3
1981.....	1.43	0.72	1.21	3.36	2
1980.....	1.42	0.71	1.25	3.38	2
1979.....	1.42	0.70	1.28	3.40	2
1978.....	1.36	0.68	1.32	3.36	2
1977.....	1.31	0.67	1.28	3.25	2

Decile values (1 = highest) apply only to State-level data. Numbers may not sum because of rounding.

Table 3. Per capita ethanol consumption for States, census regions, and the United States, 1977–2008. [Gallons of ethanol, based on population age 14 and older] (Continued)

State or other geographic area	Per capita consumption				U.S. decile for all beverages
	Beer	Wine	Spirits	All beverages	
Colorado					
2008.....	1.27	0.46	1.01	2.75	2
2007.....	1.29	0.47	1.00	2.75	2
2006.....	1.27	0.45	0.97	2.69	3
2005.....	1.30	0.41	0.99	2.70	2
2004.....	1.30	0.43	0.95	2.68	2
2003.....	1.34	0.40	0.87	2.60	2
2002.....	1.35	0.39	0.90	2.64	2
2001.....	1.42	0.41	0.96	2.79	1
2000.....	1.35	0.37	0.89	2.60	2
1999.....	1.33	0.37	0.75	2.45	3
1998.....	1.33	0.37	0.83	2.53	2
1997.....	1.30	0.37	0.81	2.48	2
1996.....	1.36	0.37	0.84	2.57	2
1995.....	1.34	0.35	0.78	2.47	2
1994.....	1.36	0.35	0.84	2.55	2
1993.....	1.40	0.36	0.86	2.63	2
1992.....	1.34	0.36	0.81	2.52	3
1991.....	1.39	0.35	0.87	2.61	3
1990.....	1.35	0.29	0.75	2.39	6
1989.....	1.40	0.37	0.84	2.60	3
1988.....	1.42	0.39	0.91	2.72	3
1987.....	1.43	0.44	0.93	2.80	3
1986.....	1.47	0.46	0.94	2.87	3
1985.....	1.47	0.50	1.18	3.15	2
1984.....	1.51	0.46	1.12	3.09	2
1983.....	1.57	0.46	1.12	3.15	3
1982.....	1.64	0.46	1.18	3.28	2
1981.....	1.63	0.44	1.26	3.33	2
1980.....	1.57	0.47	1.31	3.35	2
1979.....	1.68	0.47	1.37	3.52	2
1978.....	1.64	0.47	1.43	3.54	1
1977.....	1.43	0.36	1.22	3.01	3
Connecticut					
2008.....	0.94	0.59	0.86	2.39	6
2007.....	0.93	0.58	0.85	2.35	6
2006.....	0.93	0.55	0.84	2.32	6
2005.....	0.90	0.54	0.79	2.23	6
2004.....	0.92	0.53	0.79	2.24	6
2003.....	0.93	0.52	0.77	2.22	6
2002.....	0.95	0.50	0.74	2.20	6
2001.....	0.95	0.50	0.74	2.19	6
2000.....	0.94	0.49	0.74	2.18	6
1999.....	0.94	0.49	0.75	2.18	6
1998.....	0.96	0.48	0.74	2.18	6
1997.....	0.95	0.48	0.74	2.17	6
1996.....	0.94	0.46	0.72	2.13	6
1995.....	0.97	0.49	0.77	2.22	5
1994.....	0.99	0.43	0.78	2.20	6
1993.....	0.96	0.44	0.80	2.20	6
1992.....	1.01	0.45	0.83	2.30	6
1991.....	1.03	0.43	0.84	2.29	6

Decile values (1 = highest) apply only to State-level data. Numbers may not sum because of rounding.

Table 3. Per capita ethanol consumption for States, census regions, and the United States, 1977–2008. [Gallons of ethanol, based on population age 14 and older] (Continued)

State or other geographic area	Per capita consumption				U.S. decile for all beverages
	Beer	Wine	Spirits	All beverages	
1990.....	1.09	0.45	0.92	2.46	6
1989.....	1.09	0.47	0.98	2.54	4
1988.....	1.14	0.51	1.07	2.71	3
1987.....	1.15	0.52	1.12	2.79	3
1986.....	1.13	0.51	1.15	2.79	3
1985.....	1.14	0.50	1.20	2.84	3
1984.....	1.10	0.50	1.20	2.80	4
1983.....	1.10	0.49	1.23	2.82	4
1982.....	1.04	0.49	1.20	2.73	6
1981.....	1.05	0.44	1.18	2.67	6
1980.....	1.06	0.43	1.21	2.70	6
1979.....	1.13	0.40	1.20	2.72	5
1978.....	1.07	0.38	1.20	2.65	6
1977.....	1.05	0.35	1.21	2.61	6
Delaware					
2008.....	1.36	0.58	1.25	3.20	1
2007.....	1.39	0.59	1.25	3.23	1
2006.....	1.43	0.60	1.28	3.30	1
2005.....	1.43	0.59	1.25	3.27	1
2004.....	1.41	0.57	1.28	3.26	1
2003.....	1.37	0.56	1.17	3.11	1
2002.....	1.39	0.52	1.10	3.01	1
2001.....	1.38	0.49	1.06	2.93	1
2000.....	1.36	0.48	1.05	2.89	1
1999.....	1.40	0.48	1.03	2.90	1
1998.....	1.36	0.47	0.98	2.82	1
1997.....	1.37	0.46	0.99	2.81	1
1996.....	1.39	0.45	0.94	2.78	1
1995.....	1.30	0.40	0.92	2.62	2
1994.....	1.43	0.38	0.95	2.76	1
1993.....	1.46	0.35	0.95	2.76	1
1992.....	1.40	0.36	0.97	2.73	2
1991.....	1.40	0.35	0.95	2.70	2
1990.....	1.44	0.37	1.14	2.95	2
1989.....	1.40	0.38	1.13	2.91	2
1988.....	1.44	0.40	1.19	3.03	1
1987.....	1.44	0.42	1.22	3.08	2
1986.....	1.45	0.44	1.23	3.13	2
1985.....	1.46	0.41	1.30	3.16	2
1984.....	1.51	0.38	1.28	3.17	2
1983.....	1.53	0.35	1.34	3.22	2
1982.....	1.53	0.34	1.36	3.23	3
1981.....	1.51	0.32	1.39	3.23	3
1980.....	1.45	0.29	1.38	3.12	3
1979.....	1.38	0.27	1.34	2.99	4
1978.....	1.33	0.25	1.33	2.91	4
1977.....	1.32	0.24	1.35	2.91	4
District of Columbia					
2008.....	1.34	1.00	1.63	3.97	1
2007.....	1.35	0.99	1.61	3.95	1
2006.....	1.36	0.95	1.58	3.89	1
2005.....	1.38	0.92	1.53	3.84	1

Decile values (1 = highest) apply only to State-level data. Numbers may not sum because of rounding.

Table 3. Per capita ethanol consumption for States, census regions, and the United States, 1977–2008. [Gallons of ethanol, based on population age 14 and older] (Continued)

State or other geographic area	Per capita consumption				U.S. decile for all beverages
	Beer	Wine	Spirits	All beverages	
2004.....	1.41	0.94	1.57	3.93	1
2003.....	1.40	0.90	1.54	3.84	1
2002.....	1.36	0.84	1.47	3.67	1
2001.....	1.33	0.82	1.46	3.61	1
2000.....	1.35	0.70	1.48	3.53	1
1999.....	1.37	0.73	1.35	3.45	1
1998.....	1.37	0.73	1.44	3.55	1
1997.....	1.40	0.74	1.61	3.75	1
1996.....	1.42	0.74	1.47	3.63	1
1995.....	1.51	0.72	1.52	3.74	1
1994.....	1.50	0.74	1.52	3.76	1
1993.....	1.51	0.73	1.54	3.78	1
1992.....	1.61	0.70	1.74	4.05	1
1991.....	1.42	0.61	1.85	3.89	1
1990.....	1.42	0.76	1.96	4.14	1
1989.....	1.49	0.88	1.85	4.22	1
1988.....	1.47	0.99	2.02	4.48	1
1987.....	1.48	1.00	2.37	4.85	1
1986.....	1.52	1.04	2.19	4.75	1
1985.....	1.49	1.03	2.42	4.94	1
1984.....	1.56	1.11	2.68	5.34	1
1983.....	1.55	1.08	2.79	5.41	1
1982.....	1.48	1.00	2.91	5.39	1
1981.....	1.50	1.06	2.92	5.49	1
1980.....	1.49	0.99	2.94	5.42	1
1979.....	1.48	0.99	3.03	5.49	1
1978.....	1.43	0.94	3.14	5.51	1
1977.....	1.39	0.89	3.26	5.53	1
Florida					
2008.....	1.25	0.49	0.90	2.64	3
2007.....	1.30	0.49	0.93	2.72	2
2006.....	1.33	0.48	0.92	2.73	2
2005.....	1.34	0.47	0.91	2.71	2
2004.....	1.35	0.46	0.89	2.70	2
2003.....	1.32	0.44	0.86	2.63	2
2002.....	1.32	0.43	0.84	2.59	2
2001.....	1.33	0.40	0.82	2.56	2
2000.....	1.32	0.40	0.82	2.55	2
1999.....	1.33	0.40	0.80	2.53	2
1998.....	1.30	0.38	0.79	2.47	2
1997.....	1.34	0.37	0.80	2.51	2
1996.....	1.36	0.37	0.81	2.54	2
1995.....	1.34	0.35	0.82	2.50	2
1994.....	1.40	0.33	0.87	2.60	2
1993.....	1.44	0.33	0.92	2.68	2
1992.....	1.45	0.34	0.96	2.75	1
1991.....	1.43	0.34	0.92	2.69	2
1990.....	1.54	0.39	1.04	2.96	2
1989.....	1.51	0.39	1.00	2.90	2
1988.....	1.51	0.41	1.00	2.92	2
1987.....	1.51	0.42	1.03	2.95	2
1986.....	1.50	0.41	1.05	2.96	2

Decile values (1 = highest) apply only to State-level data. Numbers may not sum because of rounding.

Table 3. Per capita ethanol consumption for States, census regions, and the United States, 1977–2008. [Gallons of ethanol, based on population age 14 and older] (Continued)

State or other geographic area	Per capita consumption				U.S. decile for all beverages
	Beer	Wine	Spirits	All beverages	
1985.....	1.47	0.41	1.16	3.04	3
1984.....	1.48	0.40	1.24	3.12	2
1983.....	1.56	0.40	1.23	3.19	2
1982.....	1.56	0.40	1.33	3.29	2
1981.....	1.55	0.39	1.38	3.31	3
1980.....	1.42	0.37	1.43	3.22	3
1979.....	1.47	0.37	1.51	3.34	2
1978.....	1.41	0.34	1.48	3.23	3
1977.....	1.33	0.33	1.47	3.13	2
Georgia					
2008.....	1.13	0.25	0.64	2.02	9
2007.....	1.16	0.26	0.64	2.06	8
2006.....	1.17	0.26	0.64	2.06	8
2005.....	1.13	0.26	0.63	2.01	8
2004.....	1.17	0.26	0.63	2.06	8
2003.....	1.19	0.26	0.66	2.11	7
2002.....	1.20	0.26	0.65	2.12	7
2001.....	1.19	0.26	0.65	2.10	7
2000.....	1.22	0.26	0.69	2.17	7
1999.....	1.23	0.27	0.69	2.20	6
1998.....	1.21	0.24	0.70	2.14	7
1997.....	1.19	0.25	0.70	2.14	6
1996.....	1.22	0.24	0.70	2.16	6
1995.....	1.20	0.22	0.71	2.13	6
1994.....	1.17	0.20	0.77	2.14	7
1993.....	1.23	0.20	0.77	2.20	6
1992.....	1.22	0.21	0.79	2.23	7
1991.....	1.16	0.22	0.78	2.17	7
1990.....	1.22	0.23	0.86	2.31	7
1989.....	1.18	0.24	0.94	2.37	6
1988.....	1.22	0.26	0.92	2.40	6
1987.....	1.22	0.27	1.00	2.49	6
1986.....	1.22	0.27	0.95	2.43	6
1985.....	1.17	0.25	1.01	2.43	7
1984.....	1.18	0.23	1.06	2.48	7
1983.....	1.14	0.22	1.05	2.42	7
1982.....	1.12	0.21	1.04	2.37	8
1981.....	1.10	0.18	1.09	2.38	8
1980.....	1.07	0.19	1.09	2.35	8
1979.....	1.17	0.19	1.22	2.58	7
1978.....	1.14	0.19	1.26	2.59	7
1977.....	1.08	0.16	1.23	2.47	7
Hawaii					
2008.....	1.35	0.52	0.74	2.62	4
2007.....	1.34	0.49	0.80	2.62	3
2006.....	1.30	0.48	0.78	2.56	3
2005.....	1.32	0.46	0.74	2.52	3
2004.....	1.39	0.49	0.68	2.56	2
2003.....	1.30	0.42	0.67	2.39	4
2002.....	1.27	0.39	0.62	2.28	5
2001.....	1.30	0.38	0.60	2.28	5
2000.....	1.33	0.39	0.60	2.33	4

Decile values (1 = highest) apply only to State-level data. Numbers may not sum because of rounding.

Table 3. Per capita ethanol consumption for States, census regions, and the United States, 1977–2008. [Gallons of ethanol, based on population age 14 and older] (Continued)

State or other geographic area	Per capita consumption				U.S. decile for all beverages
	Beer	Wine	Spirits	All beverages	
1999.....	1.31	0.39	0.56	2.26	5
1998.....	1.32	0.37	0.54	2.22	5
1997.....	1.37	0.37	0.56	2.30	4
1996.....	1.40	0.36	0.58	2.34	4
1995.....	1.41	0.34	0.57	2.32	4
1994.....	1.46	0.38	0.62	2.47	3
1993.....	1.49	0.37	0.65	2.51	3
1992.....	1.55	0.39	0.69	2.63	2
1991.....	1.57	0.40	0.70	2.67	2
1990.....	1.64	0.40	0.79	2.84	2
1989.....	1.54	0.43	0.79	2.76	3
1988.....	1.62	0.45	0.79	2.86	3
1987.....	1.57	0.40	0.76	2.73	4
1986.....	1.60	0.44	0.85	2.88	3
1985.....	1.59	0.41	0.88	2.88	3
1984.....	1.65	0.41	0.91	2.97	3
1983.....	1.87	0.44	1.12	3.43	1
1982.....	1.80	0.48	1.14	3.42	1
1981.....	1.74	0.44	1.16	3.34	2
1980.....	1.65	0.46	1.21	3.31	2
1979.....	1.60	0.44	1.28	3.32	3
1978.....	1.38	0.46	1.30	3.15	3
1977.....	1.61	0.36	1.26	3.23	2
Idaho					
2008.....	1.15	0.81	0.69	2.65	3
2007.....	1.18	0.74	0.67	2.59	4
2006.....	1.14	0.74	0.65	2.53	4
2005.....	1.10	0.73	0.61	2.44	4
2004.....	1.12	0.71	0.57	2.40	5
2003.....	1.14	0.64	0.54	2.33	5
2002.....	1.16	0.64	0.53	2.32	5
2001.....	1.14	0.63	0.53	2.30	5
2000.....	1.16	0.65	0.51	2.32	4
1999.....	1.17	0.68	0.52	2.36	4
1998.....	1.15	0.59	0.51	2.25	4
1997.....	1.14	0.36	0.50	2.00	7
1996.....	1.18	0.30	0.51	1.98	7
1995.....	1.15	0.30	0.53	1.98	7
1994.....	1.24	0.35	0.53	2.12	7
1993.....	1.26	0.29	0.55	2.11	7
1992.....	1.32	0.31	0.57	2.20	7
1991.....	1.31	0.32	0.56	2.19	7
1990.....	1.36	0.33	0.58	2.27	7
1989.....	1.23	0.30	0.56	2.09	8
1988.....	1.25	0.36	0.58	2.18	7
1987.....	1.31	0.38	0.58	2.26	7
1986.....	1.34	0.38	0.61	2.33	7
1985.....	1.35	0.36	0.71	2.42	7
1984.....	1.40	0.31	0.72	2.43	7
1983.....	1.44	0.30	0.76	2.51	7
1982.....	1.47	0.31	0.81	2.58	7
1981.....	1.54	0.33	0.83	2.70	6

Decile values (1 = highest) apply only to State-level data. Numbers may not sum because of rounding.

Table 3. Per capita ethanol consumption for States, census regions, and the United States, 1977–2008. [Gallons of ethanol, based on population age 14 and older] (Continued)

State or other geographic area	Per capita consumption				U.S. decile for all beverages
	Beer	Wine	Spirits	All beverages	
1980.....	1.53	0.30	0.77	2.60	7
1979.....	1.55	0.27	0.84	2.65	6
1978.....	1.50	0.26	0.80	2.56	7
1977.....	1.50	0.22	0.79	2.52	7
Illinois					
2008.....	1.21	0.38	0.73	2.32	6
2007.....	1.22	0.41	0.73	2.36	6
2006.....	1.23	0.37	0.73	2.33	6
2005.....	1.22	0.34	0.70	2.26	6
2004.....	1.22	0.31	0.67	2.21	6
2003.....	1.25	0.35	0.74	2.34	5
2002.....	1.27	0.33	0.65	2.25	6
2001.....	1.27	0.32	0.68	2.27	5
2000.....	1.28	0.32	0.63	2.24	6
1999.....	1.29	0.33	0.66	2.27	5
1998.....	1.28	0.34	0.64	2.25	4
1997.....	1.26	0.35	0.65	2.26	5
1996.....	1.27	0.35	0.68	2.30	4
1995.....	1.30	0.33	0.66	2.29	4
1994.....	1.32	0.34	0.69	2.35	4
1993.....	1.32	0.34	0.72	2.38	4
1992.....	1.34	0.35	0.74	2.43	4
1991.....	1.38	0.34	0.76	2.48	4
1990.....	1.43	0.36	0.82	2.62	4
1989.....	1.38	0.35	0.82	2.56	4
1988.....	1.42	0.37	0.85	2.64	4
1987.....	1.41	0.39	0.87	2.66	4
1986.....	1.40	0.39	0.90	2.68	4
1985.....	1.38	0.37	0.98	2.72	5
1984.....	1.40	0.37	1.01	2.77	5
1983.....	1.42	0.35	1.03	2.80	5
1982.....	1.41	0.35	1.06	2.83	5
1981.....	1.43	0.35	1.12	2.91	5
1980.....	1.43	0.33	1.24	3.00	4
1979.....	1.45	0.33	1.17	2.94	4
1978.....	1.38	0.31	1.19	2.88	4
1977.....	1.35	0.30	1.22	2.87	4
Indiana					
2008.....	1.11	0.24	0.74	2.09	8
2007.....	1.14	0.24	0.72	2.10	8
2006.....	1.10	0.25	0.66	2.00	8
2005.....	1.11	0.22	0.68	2.01	8
2004.....	1.14	0.22	0.66	2.02	8
2003.....	1.11	0.21	0.64	1.96	9
2002.....	1.13	0.20	0.60	1.93	9
2001.....	1.15	0.20	0.62	1.97	9
2000.....	1.16	0.21	0.61	1.98	8
1999.....	1.16	0.19	0.59	1.94	8
1998.....	1.14	0.19	0.58	1.91	8
1997.....	1.12	0.19	0.59	1.90	8
1996.....	1.13	0.19	0.57	1.89	8
1995.....	1.12	0.21	0.58	1.91	8

Decile values (1 = highest) apply only to State-level data. Numbers may not sum because of rounding.

Table 3. Per capita ethanol consumption for States, census regions, and the United States, 1977–2008. [Gallons of ethanol, based on population age 14 and older] (Continued)

State or other geographic area	Per capita consumption				U.S. decile for all beverages
	Beer	Wine	Spirits	All beverages	
1994.....	1.15	0.20	0.59	1.94	8
1993.....	1.15	0.19	0.64	1.98	8
1992.....	1.16	0.20	0.58	1.95	9
1991.....	1.22	0.19	0.60	2.00	9
1990.....	1.26	0.20	0.63	2.09	8
1989.....	1.21	0.19	0.63	2.04	8
1988.....	1.23	0.21	0.66	2.10	8
1987.....	1.24	0.22	0.67	2.13	8
1986.....	1.25	0.23	0.67	2.14	8
1985.....	1.25	0.22	0.72	2.19	8
1984.....	1.26	0.21	0.72	2.19	8
1983.....	1.27	0.19	0.73	2.19	8
1982.....	1.29	0.18	0.76	2.23	8
1981.....	1.29	0.18	0.78	2.25	8
1980.....	1.26	0.17	0.77	2.21	8
1979.....	1.23	0.15	0.79	2.18	9
1978.....	1.19	0.16	0.79	2.14	8
1977.....	1.14	0.14	0.77	2.05	9
Iowa					
2008.....	1.41	0.17	0.70	2.29	7
2007.....	1.40	0.17	0.67	2.24	7
2006.....	1.38	0.16	0.65	2.19	7
2005.....	1.37	0.16	0.60	2.13	7
2004.....	1.37	0.16	0.57	2.09	7
2003.....	1.37	0.15	0.53	2.05	8
2002.....	1.37	0.14	0.51	2.02	8
2001.....	1.36	0.13	0.50	1.98	8
2000.....	1.35	0.13	0.50	1.98	8
1999.....	1.34	0.13	0.48	1.95	8
1998.....	1.31	0.12	0.46	1.90	8
1997.....	1.28	0.12	0.45	1.85	9
1996.....	1.28	0.12	0.45	1.85	9
1995.....	1.26	0.11	0.44	1.80	9
1994.....	1.30	0.10	0.44	1.84	9
1993.....	1.28	0.11	0.48	1.87	9
1992.....	1.31	0.13	0.46	1.90	9
1991.....	1.32	0.16	0.52	2.01	8
1990.....	1.34	0.18	0.54	2.06	9
1989.....	1.26	0.18	0.50	1.94	9
1988.....	1.28	0.20	0.52	1.99	9
1987.....	1.30	0.21	0.57	2.08	9
1986.....	1.32	0.19	0.53	2.04	9
1985.....	1.31	0.14	0.57	2.02	9
1984.....	1.36	0.12	0.61	2.09	9
1983.....	1.38	0.13	0.64	2.15	8
1982.....	1.39	0.13	0.65	2.17	9
1981.....	1.44	0.13	0.69	2.27	8
1980.....	1.41	0.13	0.71	2.25	8
1979.....	1.40	0.11	0.71	2.22	8
1978.....	1.38	0.11	0.74	2.22	8
1977.....	1.33	0.10	0.74	2.17	8

Decile values (1 = highest) apply only to State-level data. Numbers may not sum because of rounding.

Table 3. Per capita ethanol consumption for States, census regions, and the United States, 1977–2008. [Gallons of ethanol, based on population age 14 and older] (Continued)

State or other geographic area	Per capita consumption				U.S. decile for all beverages
	Beer	Wine	Spirits	All beverages	
Kansas					
2008.....	1.21	0.14	0.65	2.01	9
2007.....	1.17	0.15	0.64	1.96	9
2006.....	1.14	0.18	0.61	1.94	9
2005.....	1.14	0.18	0.57	1.88	9
2004.....	1.13	0.16	0.56	1.85	9
2003.....	1.15	0.17	0.56	1.88	10
2002.....	1.19	0.15	0.54	1.88	9
2001.....	1.12	0.15	0.53	1.79	9
2000.....	1.15	0.15	0.52	1.82	9
1999.....	1.14	0.16	0.54	1.84	9
1998.....	1.09	0.15	0.54	1.79	9
1997.....	1.09	0.14	0.48	1.71	10
1996.....	1.05	0.14	0.49	1.69	10
1995.....	1.08	0.15	0.50	1.72	9
1994.....	1.12	0.13	0.48	1.73	10
1993.....	1.09	0.14	0.52	1.75	10
1992.....	1.09	0.14	0.55	1.78	10
1991.....	1.15	0.14	0.57	1.85	9
1990.....	1.13	0.13	0.53	1.79	10
1989.....	1.10	0.13	0.54	1.77	10
1988.....	1.11	0.21	0.56	1.88	9
1987.....	1.12	0.16	0.56	1.84	9
1986.....	1.12	0.17	0.59	1.88	9
1985.....	1.17	0.15	0.64	1.96	9
1984.....	1.18	0.14	0.63	1.95	9
1983.....	1.20	0.13	0.64	1.96	9
1982.....	1.22	0.13	0.67	2.02	9
1981.....	1.23	0.12	0.70	2.05	9
1980.....	1.23	0.11	0.62	1.96	9
1979.....	1.17	0.11	0.73	2.01	9
1978.....	1.14	0.12	0.64	1.89	10
1977.....	1.13	0.10	0.65	1.88	10
Kentucky					
2008.....	1.03	0.18	0.65	1.86	10
2007.....	1.05	0.17	0.63	1.85	10
2006.....	1.04	0.17	0.62	1.83	10
2005.....	1.05	0.14	0.61	1.80	10
2004.....	1.07	0.17	0.57	1.81	10
2003.....	1.03	0.15	0.56	1.74	10
2002.....	1.08	0.14	0.54	1.76	10
2001.....	1.04	0.12	0.46	1.63	10
2000.....	1.07	0.14	0.54	1.74	10
1999.....	1.07	0.13	0.54	1.74	10
1998.....	1.07	0.13	0.53	1.72	10
1997.....	1.06	0.13	0.53	1.72	9
1996.....	1.05	0.13	0.54	1.72	10
1995.....	1.05	0.12	0.54	1.71	10
1994.....	1.08	0.11	0.55	1.73	10
1993.....	1.08	0.10	0.55	1.73	10
1992.....	1.04	0.11	0.56	1.71	10
1991.....	1.11	0.11	0.56	1.78	10

Decile values (1 = highest) apply only to State-level data. Numbers may not sum because of rounding.

Table 3. Per capita ethanol consumption for States, census regions, and the United States, 1977–2008. [Gallons of ethanol, based on population age 14 and older] (Continued)

State or other geographic area	Per capita consumption				U.S. decile for all beverages
	Beer	Wine	Spirits	All beverages	
1990.....	1.12	0.11	0.60	1.83	10
1989.....	1.08	0.12	0.56	1.76	10
1988.....	1.08	0.12	0.59	1.79	10
1987.....	1.03	0.14	0.59	1.76	10
1986.....	1.09	0.13	0.62	1.84	10
1985.....	1.07	0.13	0.66	1.86	10
1984.....	1.05	0.12	0.68	1.85	10
1983.....	1.13	0.12	0.69	1.94	9
1982.....	1.14	0.12	0.73	1.99	9
1981.....	1.13	0.11	0.75	1.99	9
1980.....	1.08	0.10	0.74	1.91	10
1979.....	1.10	0.09	0.77	1.97	10
1978.....	1.07	0.09	0.77	1.93	10
1977.....	1.19	0.09	0.75	2.03	9
Louisiana					
2008.....	1.56	0.27	0.83	2.65	3
2007.....	1.57	0.28	0.81	2.65	3
2006.....	1.61	0.25	0.80	2.66	3
2005.....	1.47	0.24	0.72	2.43	5
2004.....	1.39	0.26	0.73	2.38	5
2003.....	1.42	0.25	0.73	2.39	4
2002.....	1.33	0.24	0.71	2.27	5
2001.....	1.49	0.23	0.69	2.41	3
2000.....	1.50	0.22	0.70	2.43	3
1999.....	1.54	0.24	0.69	2.46	2
1998.....	1.50	0.23	0.70	2.43	3
1997.....	1.50	0.23	0.71	2.44	2
1996.....	1.50	0.22	0.72	2.44	2
1995.....	1.55	0.21	0.73	2.50	2
1994.....	1.45	0.21	0.73	2.39	3
1993.....	1.53	0.21	0.72	2.47	3
1992.....	1.55	0.22	0.74	2.51	3
1991.....	1.52	0.21	0.73	2.46	4
1990.....	1.53	0.23	0.78	2.54	5
1989.....	1.43	0.23	0.72	2.38	6
1988.....	1.44	0.24	0.69	2.37	7
1987.....	1.36	0.24	0.75	2.34	7
1986.....	1.39	0.26	0.78	2.42	7
1985.....	1.35	0.27	0.86	2.49	6
1984.....	1.40	0.29	0.94	2.63	6
1983.....	1.43	0.30	1.02	2.75	5
1982.....	1.49	0.30	1.00	2.78	5
1981.....	1.48	0.27	1.02	2.77	6
1980.....	1.41	0.27	1.04	2.71	6
1979.....	1.36	0.26	1.08	2.70	6
1978.....	1.35	0.25	1.07	2.67	6
1977.....	1.30	0.25	1.03	2.57	6
Maine					
2008.....	1.26	0.42	0.82	2.50	5
2007.....	1.27	0.43	0.80	2.49	4
2006.....	1.26	0.42	0.79	2.47	4
2005.....	1.24	0.41	0.77	2.42	5

Decile values (1 = highest) apply only to State-level data. Numbers may not sum because of rounding.

Table 3. Per capita ethanol consumption for States, census regions, and the United States, 1977–2008. [Gallons of ethanol, based on population age 14 and older] (Continued)

State or other geographic area	Per capita consumption				U.S. decile for all beverages
	Beer	Wine	Spirits	All beverages	
2004.....	1.24	0.41	0.76	2.41	4
2003.....	1.24	0.39	0.73	2.36	5
2002.....	1.23	0.39	0.69	2.31	5
2001.....	1.20	0.37	0.69	2.26	5
2000.....	1.17	0.39	0.73	2.29	5
1999.....	1.16	0.37	0.73	2.26	5
1998.....	1.14	0.34	0.68	2.16	6
1997.....	1.15	0.33	0.71	2.19	5
1996.....	1.17	0.33	0.71	2.22	5
1995.....	1.17	0.29	0.72	2.19	6
1994.....	1.13	0.27	0.77	2.17	6
1993.....	1.15	0.29	0.79	2.22	6
1992.....	1.16	0.29	0.78	2.23	6
1991.....	1.18	0.30	0.77	2.25	6
1990.....	1.21	0.31	0.82	2.34	6
1989.....	1.25	0.34	0.85	2.44	5
1988.....	1.28	0.36	0.91	2.54	5
1987.....	1.26	0.38	0.91	2.55	5
1986.....	1.28	0.36	0.91	2.56	5
1985.....	1.29	0.33	0.94	2.56	6
1984.....	1.25	0.31	1.01	2.57	6
1983.....	1.32	0.29	1.03	2.63	6
1982.....	1.30	0.30	1.02	2.63	6
1981.....	1.24	0.28	1.05	2.57	7
1980.....	1.32	0.29	1.06	2.67	6
1979.....	1.30	0.27	1.08	2.65	6
1978.....	1.31	0.27	1.05	2.62	6
1977.....	1.37	0.23	1.04	2.64	6
Maryland					
2008.....	0.99	0.36	0.85	2.21	7
2007.....	1.01	0.36	0.84	2.21	7
2006.....	1.02	0.34	0.83	2.19	7
2005.....	0.93	0.32	0.85	2.11	7
2004.....	1.03	0.33	0.79	2.15	7
2003.....	1.02	0.32	0.77	2.11	7
2002.....	1.05	0.31	0.75	2.11	7
2001.....	1.06	0.30	0.75	2.11	7
2000.....	1.04	0.30	0.75	2.09	7
1999.....	1.04	0.30	0.74	2.08	7
1998.....	1.05	0.30	0.73	2.08	7
1997.....	1.05	0.29	0.73	2.07	7
1996.....	1.05	0.29	0.74	2.08	7
1995.....	1.06	0.28	0.74	2.09	7
1994.....	1.09	0.28	0.78	2.15	6
1993.....	1.10	0.28	0.80	2.19	7
1992.....	1.11	0.29	0.86	2.26	6
1991.....	1.15	0.30	0.89	2.33	6
1990.....	1.22	0.33	0.96	2.51	5
1989.....	1.22	0.34	0.98	2.54	4
1988.....	1.26	0.36	1.01	2.62	4
1987.....	1.29	0.38	1.07	2.74	3
1986.....	1.29	0.39	1.08	2.75	4

Decile values (1 = highest) apply only to State-level data. Numbers may not sum because of rounding.

Table 3. Per capita ethanol consumption for States, census regions, and the United States, 1977–2008. [Gallons of ethanol, based on population age 14 and older] (Continued)

State or other geographic area	Per capita consumption				U.S. decile for all beverages
	Beer	Wine	Spirits	All beverages	
1985.....	1.31	0.36	1.14	2.81	4
1984.....	1.31	0.36	1.17	2.84	4
1983.....	1.34	0.35	1.20	2.89	4
1982.....	1.27	0.32	1.17	2.77	5
1981.....	1.39	0.34	1.33	3.06	4
1980.....	1.42	0.33	1.35	3.09	4
1979.....	1.43	0.31	1.39	3.14	3
1978.....	1.41	0.31	1.38	3.09	3
1977.....	1.37	0.30	1.39	3.05	3
Massachusetts					
2008.....	1.07	0.62	0.84	2.53	4
2007.....	1.01	0.61	0.86	2.48	5
2006.....	1.10	0.61	0.84	2.55	3
2005.....	1.07	0.59	0.85	2.50	3
2004.....	1.10	0.58	0.84	2.52	3
2003.....	1.10	0.56	0.82	2.48	3
2002.....	1.13	0.54	0.80	2.46	3
2001.....	1.12	0.52	0.78	2.43	3
2000.....	1.16	0.51	0.87	2.55	2
1999.....	1.09	0.51	0.79	2.39	3
1998.....	1.14	0.50	0.75	2.39	3
1997.....	1.13	0.49	0.76	2.39	3
1996.....	1.11	0.48	0.77	2.35	3
1995.....	1.13	0.44	0.78	2.35	3
1994.....	1.14	0.44	0.80	2.38	3
1993.....	1.14	0.44	0.80	2.38	4
1992.....	1.12	0.44	0.82	2.38	5
1991.....	1.19	0.43	0.87	2.49	3
1990.....	1.22	0.45	0.97	2.63	3
1989.....	1.26	0.47	1.02	2.75	3
1988.....	1.29	0.50	1.07	2.86	3
1987.....	1.29	0.51	1.12	2.93	3
1986.....	1.31	0.53	1.12	2.96	3
1985.....	1.30	0.51	1.21	3.01	3
1984.....	1.30	0.51	1.24	3.04	3
1983.....	1.36	0.50	1.21	3.07	3
1982.....	1.35	0.49	1.22	3.07	3
1981.....	1.44	0.49	1.24	3.17	3
1980.....	1.47	0.45	1.27	3.19	3
1979.....	1.39	0.42	1.23	3.04	4
1978.....	1.37	0.40	1.25	3.02	4
1977.....	1.34	0.37	1.24	2.95	3
Michigan					
2008.....	1.12	0.30	0.80	2.22	7
2007.....	1.11	0.30	0.78	2.19	7
2006.....	1.12	0.29	0.76	2.17	7
2005.....	1.14	0.28	0.75	2.17	7
2004.....	1.15	0.28	0.72	2.15	7
2003.....	1.17	0.26	0.70	2.13	7
2002.....	1.16	0.23	0.68	2.07	7
2001.....	1.19	0.24	0.68	2.10	7
2000.....	1.19	0.24	0.69	2.12	7

Decile values (1 = highest) apply only to State-level data. Numbers may not sum because of rounding.

Table 3. Per capita ethanol consumption for States, census regions, and the United States, 1977–2008. [Gallons of ethanol, based on population age 14 and older] (Continued)

State or other geographic area	Per capita consumption				U.S. decile for all beverages
	Beer	Wine	Spirits	All beverages	
1999.....	1.19	0.24	0.68	2.11	7
1998.....	1.20	0.22	0.69	2.12	7
1997.....	1.17	0.22	0.66	2.06	7
1996.....	1.20	0.22	0.67	2.08	7
1995.....	1.20	0.19	0.66	2.06	7
1994.....	1.23	0.20	0.67	2.10	7
1993.....	1.25	0.20	0.72	2.18	7
1992.....	1.26	0.22	0.74	2.21	7
1991.....	1.30	0.22	0.74	2.26	6
1990.....	1.33	0.28	0.80	2.42	6
1989.....	1.29	0.30	0.80	2.38	6
1988.....	1.31	0.32	0.84	2.47	6
1987.....	1.32	0.33	0.85	2.50	6
1986.....	1.33	0.33	0.90	2.56	5
1985.....	1.30	0.32	0.95	2.58	6
1984.....	1.32	0.31	0.97	2.60	6
1983.....	1.35	0.28	0.97	2.60	6
1982.....	1.35	0.39	0.98	2.72	6
1981.....	1.34	0.29	1.00	2.63	6
1980.....	1.34	0.28	1.03	2.65	6
1979.....	1.37	0.25	1.03	2.65	6
1978.....	1.43	0.25	1.05	2.74	5
1977.....	1.45	0.24	1.02	2.71	5
Minnesota					
2008.....	1.21	0.37	1.03	2.60	4
2007.....	1.16	0.36	0.97	2.49	4
2006.....	1.15	0.32	0.93	2.40	5
2005.....	1.18	0.32	0.96	2.47	4
2004.....	1.23	0.31	0.93	2.47	3
2003.....	1.21	0.29	0.90	2.41	4
2002.....	1.25	0.28	0.87	2.40	4
2001.....	1.25	0.26	0.87	2.38	4
2000.....	1.24	0.26	0.87	2.37	4
1999.....	1.23	0.27	0.86	2.36	4
1998.....	1.16	0.27	0.84	2.27	4
1997.....	1.23	0.27	0.83	2.33	3
1996.....	1.25	0.26	0.83	2.34	4
1995.....	1.24	0.26	0.83	2.32	3
1994.....	1.27	0.25	0.83	2.35	4
1993.....	1.24	0.24	0.84	2.33	5
1992.....	1.25	0.25	0.85	2.35	5
1991.....	1.30	0.24	0.81	2.35	5
1990.....	1.32	0.27	0.96	2.55	4
1989.....	1.28	0.27	0.88	2.43	5
1988.....	1.30	0.30	0.89	2.49	5
1987.....	1.31	0.32	0.94	2.56	5
1986.....	1.30	0.33	0.92	2.56	6
1985.....	1.31	0.31	1.06	2.68	5
1984.....	1.34	0.28	1.07	2.68	5
1983.....	1.37	0.27	1.10	2.74	6
1982.....	1.36	0.27	1.11	2.75	6
1981.....	1.39	0.27	1.18	2.83	5

Decile values (1 = highest) apply only to State-level data. Numbers may not sum because of rounding.

Table 3. Per capita ethanol consumption for States, census regions, and the United States, 1977–2008. [Gallons of ethanol, based on population age 14 and older] (Continued)

State or other geographic area	Per capita consumption				U.S. decile for all beverages
	Beer	Wine	Spirits	All beverages	
1980.....	1.40	0.26	1.20	2.85	5
1979.....	1.35	0.24	1.16	2.75	5
1978.....	1.31	0.23	1.15	2.69	5
1977.....	1.30	0.20	1.15	2.65	5
Mississippi					
2008.....	1.45	0.12	0.70	2.28	7
2007.....	1.46	0.12	0.68	2.26	7
2006.....	1.46	0.12	0.67	2.25	6
2005.....	1.40	0.12	0.65	2.17	7
2004.....	1.39	0.12	0.63	2.13	7
2003.....	1.40	0.12	0.62	2.14	7
2002.....	1.40	0.12	0.61	2.12	7
2001.....	1.39	0.11	0.60	2.11	7
2000.....	1.44	0.09	0.60	2.13	7
1999.....	1.45	0.10	0.61	2.15	7
1998.....	1.40	0.09	0.59	2.08	7
1997.....	1.37	0.09	0.61	2.07	7
1996.....	1.37	0.09	0.62	2.08	7
1995.....	1.36	0.09	0.61	2.06	7
1994.....	1.28	0.08	0.63	2.00	7
1993.....	1.37	0.10	0.63	2.11	7
1992.....	1.35	0.09	0.63	2.08	8
1991.....	1.32	0.09	0.64	2.05	8
1990.....	1.34	0.09	0.65	2.08	8
1989.....	1.26	0.09	0.65	2.00	9
1988.....	1.28	0.09	0.66	2.03	9
1987.....	1.26	0.09	0.66	2.01	9
1986.....	1.26	0.10	0.68	2.04	9
1985.....	1.21	0.10	0.73	2.04	9
1984.....	1.19	0.11	0.77	2.06	9
1983.....	1.19	0.11	0.79	2.09	9
1982.....	1.19	0.11	0.82	2.11	9
1981.....	1.19	0.11	0.84	2.14	9
1980.....	1.13	0.10	0.86	2.09	9
1979.....	1.15	0.10	0.84	2.09	9
1978.....	1.16	0.10	0.91	2.18	8
1977.....	1.08	0.11	0.86	2.05	8
Missouri					
2008.....	1.32	0.30	0.80	2.42	5
2007.....	1.33	0.30	0.78	2.41	5
2006.....	1.33	0.28	0.76	2.37	5
2005.....	1.30	0.27	0.72	2.29	6
2004.....	1.32	0.26	0.71	2.30	5
2003.....	1.33	0.26	0.69	2.27	6
2002.....	1.47	0.25	0.67	2.39	4
2001.....	1.34	0.23	0.67	2.25	6
2000.....	1.35	0.23	0.67	2.25	5
1999.....	1.35	0.23	0.66	2.23	6
1998.....	1.33	0.23	0.63	2.18	6
1997.....	1.30	0.22	0.63	2.15	6
1996.....	1.31	0.22	0.57	2.09	7
1995.....	1.31	0.20	0.62	2.14	6

Decile values (1 = highest) apply only to State-level data. Numbers may not sum because of rounding.

Table 3. Per capita ethanol consumption for States, census regions, and the United States, 1977–2008. [Gallons of ethanol, based on population age 14 and older] (Continued)

State or other geographic area	Per capita consumption				U.S. decile for all beverages
	Beer	Wine	Spirits	All beverages	
1994.....	1.36	0.19	0.66	2.21	6
1993.....	1.33	0.20	0.67	2.20	6
1992.....	1.34	0.21	0.69	2.24	6
1991.....	1.35	0.22	0.64	2.20	7
1990.....	1.37	0.22	0.70	2.30	7
1989.....	1.33	0.22	0.69	2.24	7
1988.....	1.33	0.25	0.69	2.28	7
1987.....	1.36	0.27	0.72	2.35	7
1986.....	1.36	0.28	0.72	2.36	7
1985.....	1.33	0.26	0.76	2.36	7
1984.....	1.34	0.25	0.68	2.27	8
1983.....	1.37	0.22	0.78	2.37	8
1982.....	1.38	0.21	0.79	2.38	7
1981.....	1.40	0.21	0.83	2.45	7
1980.....	1.39	0.20	0.84	2.44	7
1979.....	1.37	0.20	0.86	2.43	7
1978.....	1.31	0.20	0.89	2.40	7
1977.....	1.23	0.19	0.83	2.25	8
Montana					
2008.....	1.68	0.35	0.87	2.90	2
2007.....	1.59	0.35	0.86	2.80	2
2006.....	1.57	0.35	0.83	2.74	2
2005.....	1.53	0.35	0.78	2.65	2
2004.....	1.54	0.34	0.74	2.63	2
2003.....	1.55	0.33	0.72	2.59	2
2002.....	1.61	0.33	0.70	2.64	2
2001.....	1.57	0.30	0.68	2.55	2
2000.....	1.55	0.29	0.68	2.53	2
1999.....	1.56	0.29	0.67	2.52	2
1998.....	1.51	0.28	0.65	2.44	2
1997.....	1.49	0.29	0.63	2.42	3
1996.....	1.49	0.27	0.64	2.40	3
1995.....	1.49	0.26	0.78	2.54	2
1994.....	1.57	0.24	0.70	2.51	2
1993.....	1.49	0.25	0.73	2.47	3
1992.....	1.59	0.26	0.75	2.61	2
1991.....	1.61	0.28	0.76	2.64	3
1990.....	1.60	0.29	0.77	2.67	3
1989.....	1.56	0.29	0.72	2.57	4
1988.....	1.59	0.32	0.76	2.66	4
1987.....	1.57	0.33	0.77	2.67	4
1986.....	1.58	0.34	0.81	2.73	4
1985.....	1.60	0.33	0.88	2.81	4
1984.....	1.70	0.32	0.93	2.95	3
1983.....	1.79	0.32	0.99	3.09	3
1982.....	1.82	0.32	1.02	3.17	3
1981.....	1.90	0.33	1.05	3.28	3
1980.....	1.82	0.35	1.04	3.21	3
1979.....	1.83	0.41	1.05	3.29	3
1978.....	1.82	0.20	1.07	3.10	3
1977.....	1.83	0.20	1.10	3.12	3

Decile values (1 = highest) apply only to State-level data. Numbers may not sum because of rounding.

Table 3. Per capita ethanol consumption for States, census regions, and the United States, 1977–2008. [Gallons of ethanol, based on population age 14 and older] (Continued)

State or other geographic area	Per capita consumption				U.S. decile for all beverages
	Beer	Wine	Spirits	All beverages	
Nebraska					
2008.....	1.47	0.21	0.68	2.36	6
2007.....	1.45	0.21	0.67	2.33	6
2006.....	1.43	0.21	0.71	2.35	6
2005.....	1.41	0.20	0.68	2.29	5
2004.....	1.43	0.19	0.64	2.26	6
2003.....	1.42	0.18	0.63	2.23	6
2002.....	1.45	0.17	0.61	2.23	6
2001.....	1.43	0.16	0.60	2.19	6
2000.....	1.44	0.17	0.62	2.23	6
1999.....	1.42	0.17	0.60	2.19	6
1998.....	1.39	0.18	0.58	2.16	6
1997.....	1.35	0.18	0.56	2.09	7
1996.....	1.35	0.18	0.57	2.11	6
1995.....	1.35	0.19	0.57	2.10	7
1994.....	1.39	0.18	0.57	2.14	7
1993.....	1.37	0.18	0.59	2.14	7
1992.....	1.37	0.18	0.61	2.16	7
1991.....	1.40	0.18	0.61	2.19	7
1990.....	1.41	0.20	0.64	2.25	7
1989.....	1.37	0.19	0.62	2.18	7
1988.....	1.37	0.22	0.65	2.23	7
1987.....	1.40	0.22	0.65	2.27	7
1986.....	1.38	0.23	0.67	2.28	7
1985.....	1.40	0.22	0.75	2.37	7
1984.....	1.44	0.20	0.76	2.41	7
1983.....	1.49	0.21	0.79	2.49	7
1982.....	1.50	0.28	0.58	2.37	7
1981.....	1.57	0.20	0.88	2.66	6
1980.....	1.56	0.19	0.89	2.64	6
1979.....	1.50	0.18	0.88	2.57	7
1978.....	1.47	0.18	0.89	2.54	7
1977.....	1.45	0.17	0.91	2.53	6
Nevada					
2008.....	1.68	0.63	1.33	3.64	1
2007.....	1.71	0.64	1.27	3.61	1
2006.....	1.74	0.66	1.30	3.70	1
2005.....	1.71	0.62	1.23	3.56	1
2004.....	1.75	0.64	1.26	3.66	1
2003.....	1.76	0.62	1.25	3.63	1
2002.....	1.75	0.61	1.24	3.60	1
2001.....	1.81	0.60	1.22	3.63	1
2000.....	1.79	0.62	1.26	3.67	1
1999.....	1.82	0.63	1.29	3.74	1
1998.....	1.80	0.58	1.23	3.62	1
1997.....	1.84	0.58	1.30	3.72	1
1996.....	1.91	0.59	1.39	3.89	1
1995.....	1.87	0.58	1.39	3.84	1
1994.....	1.93	0.57	1.51	4.00	1
1993.....	1.95	0.58	1.54	4.06	1
1992.....	2.02	0.62	1.61	4.25	1
1991.....	2.05	0.63	1.63	4.31	1

Decile values (1 = highest) apply only to State-level data. Numbers may not sum because of rounding.

Table 3. Per capita ethanol consumption for States, census regions, and the United States, 1977–2008. [Gallons of ethanol, based on population age 14 and older] (Continued)

State or other geographic area	Per capita consumption				U.S. decile for all beverages
	Beer	Wine	Spirits	All beverages	
1990.....	2.17	0.69	1.92	4.78	1
1989.....	2.18	0.73	1.92	4.83	1
1988.....	2.13	0.78	2.00	4.91	1
1987.....	2.05	0.84	2.09	4.99	1
1986.....	2.07	0.88	2.11	5.05	1
1985.....	1.96	0.84	2.18	4.99	1
1984.....	2.01	0.82	2.36	5.19	1
1983.....	1.98	0.79	2.45	5.22	1
1982.....	1.99	0.77	2.50	5.25	1
1981.....	2.08	0.80	2.71	5.59	1
1980.....	2.09	0.79	2.94	5.82	1
1979.....	2.28	0.88	3.28	6.44	1
1978.....	2.20	0.85	3.65	6.69	1
1977.....	2.15	0.83	3.85	6.84	1
New Hampshire					
2008.....	1.71	0.81	1.79	4.31	1
2007.....	1.74	0.74	1.75	4.22	1
2006.....	1.73	0.72	1.76	4.21	1
2005.....	1.72	0.71	1.68	4.11	1
2004.....	1.71	0.70	1.65	4.07	1
2003.....	1.72	0.70	1.61	4.03	1
2002.....	1.73	0.69	1.63	4.05	1
2001.....	1.74	0.65	1.61	4.00	1
2000.....	1.75	0.56	1.69	4.00	1
1999.....	1.75	0.56	1.70	4.01	1
1998.....	1.72	0.54	1.73	3.98	1
1997.....	1.73	0.55	1.76	4.04	1
1996.....	1.73	0.55	1.85	4.13	1
1995.....	1.74	0.51	1.87	4.12	1
1994.....	1.75	0.48	1.90	4.13	1
1993.....	1.83	0.54	2.01	4.38	1
1992.....	1.81	0.52	1.96	4.30	1
1991.....	1.85	0.49	1.96	4.30	1
1990.....	1.85	0.49	1.97	4.30	1
1989.....	1.87	0.50	1.99	4.37	1
1988.....	1.91	0.49	1.94	4.33	1
1987.....	1.93	0.50	1.98	4.41	1
1986.....	1.93	0.52	2.06	4.51	1
1985.....	1.99	0.53	2.21	4.73	1
1984.....	1.99	0.59	2.33	4.91	1
1983.....	2.17	0.56	2.35	5.08	1
1982.....	1.89	0.58	2.34	4.81	1
1981.....	1.89	0.59	2.44	4.92	1
1980.....	2.21	0.69	2.86	5.76	1
1979.....	1.98	0.62	2.61	5.20	1
1978.....	1.99	0.54	2.94	5.46	1
1977.....	1.89	0.50	2.93	5.32	1
New Jersey					
2008.....	0.94	0.55	0.86	2.35	6
2007.....	0.93	0.55	0.86	2.34	6
2006.....	0.94	0.53	0.84	2.32	6
2005.....	0.95	0.51	0.82	2.28	6

Decile values (1 = highest) apply only to State-level data. Numbers may not sum because of rounding.

Table 3. Per capita ethanol consumption for States, census regions, and the United States, 1977–2008. [Gallons of ethanol, based on population age 14 and older] (Continued)

State or other geographic area	Per capita consumption				U.S. decile for all beverages
	Beer	Wine	Spirits	All beverages	
2004.....	0.96	0.52	0.82	2.29	6
2003.....	0.95	0.50	0.79	2.24	6
2002.....	0.98	0.49	0.77	2.24	6
2001.....	0.99	0.47	0.75	2.20	6
2000.....	0.96	0.47	0.77	2.19	6
1999.....	0.97	0.46	0.71	2.14	7
1998.....	0.98	0.46	0.69	2.12	7
1997.....	0.98	0.42	0.74	2.15	6
1996.....	1.00	0.44	0.76	2.20	6
1995.....	1.03	0.44	0.75	2.22	5
1994.....	1.04	0.43	0.79	2.27	5
1993.....	1.07	0.42	0.79	2.29	5
1992.....	1.07	0.44	0.83	2.34	5
1991.....	1.09	0.43	0.82	2.34	6
1990.....	1.15	0.48	0.95	2.58	4
1989.....	1.13	0.50	0.96	2.59	3
1988.....	1.15	0.51	0.93	2.58	4
1987.....	1.18	0.54	1.01	2.72	4
1986.....	1.18	0.56	1.03	2.77	4
1985.....	1.18	0.55	1.08	2.81	4
1984.....	1.19	0.55	1.10	2.83	4
1983.....	1.21	0.52	1.13	2.86	4
1982.....	1.22	0.52	1.13	2.87	4
1981.....	1.22	0.51	1.15	2.87	5
1980.....	1.23	0.47	1.13	2.83	5
1979.....	1.18	0.43	1.10	2.71	6
1978.....	1.17	0.42	1.10	2.69	6
1977.....	1.16	0.40	1.13	2.69	5
New Mexico					
2008.....	1.43	0.31	0.72	2.47	5
2007.....	1.41	0.31	0.71	2.43	5
2006.....	1.38	0.31	0.70	2.39	5
2005.....	1.48	0.29	0.67	2.44	4
2004.....	1.45	0.25	0.66	2.35	5
2003.....	1.52	0.27	0.61	2.40	4
2002.....	1.53	0.26	0.61	2.40	3
2001.....	1.54	0.25	0.61	2.39	3
2000.....	1.53	0.25	0.61	2.38	3
1999.....	1.53	0.25	0.59	2.36	4
1998.....	1.49	0.24	0.58	2.31	4
1997.....	1.51	0.24	0.58	2.33	3
1996.....	1.55	0.24	0.59	2.38	3
1995.....	1.56	0.24	0.60	2.40	3
1994.....	1.46	0.19	0.60	2.25	5
1993.....	1.53	0.23	0.63	2.39	3
1992.....	1.56	0.25	0.66	2.47	4
1991.....	1.64	0.26	0.64	2.54	3
1990.....	1.68	0.28	0.68	2.64	3
1989.....	1.64	0.29	0.65	2.58	4
1988.....	1.63	0.33	0.67	2.64	4
1987.....	1.63	0.35	0.67	2.65	4
1986.....	1.64	0.35	0.70	2.70	4

Decile values (1 = highest) apply only to State-level data. Numbers may not sum because of rounding.

Table 3. Per capita ethanol consumption for States, census regions, and the United States, 1977–2008. [Gallons of ethanol, based on population age 14 and older] (Continued)

State or other geographic area	Per capita consumption				U.S. decile for all beverages
	Beer	Wine	Spirits	All beverages	
1985.....	1.70	0.36	0.77	2.83	4
1984.....	1.71	0.28	0.76	2.75	5
1983.....	1.72	0.31	0.98	3.00	4
1982.....	1.72	0.34	0.94	3.00	4
1981.....	1.74	0.32	0.95	3.01	4
1980.....	1.66	0.32	1.00	2.99	4
1979.....	1.71	0.30	1.01	3.02	4
1978.....	1.68	0.32	0.98	2.99	4
1977.....	1.65	0.32	0.96	2.93	4
New York					
2008.....	0.92	0.47	0.67	2.05	8
2007.....	0.92	0.46	0.68	2.06	8
2006.....	0.88	0.45	0.65	1.99	9
2005.....	0.90	0.43	0.64	1.97	8
2004.....	0.91	0.41	0.62	1.95	9
2003.....	0.93	0.40	0.61	1.93	9
2002.....	0.95	0.38	0.59	1.91	9
2001.....	0.96	0.37	0.56	1.88	9
2000.....	0.92	0.38	0.58	1.88	9
1999.....	0.93	0.37	0.56	1.85	9
1998.....	0.95	0.38	0.51	1.84	9
1997.....	0.94	0.37	0.57	1.87	8
1996.....	0.97	0.36	0.57	1.90	8
1995.....	0.98	0.38	0.57	1.93	8
1994.....	0.98	0.35	0.60	1.93	8
1993.....	1.00	0.35	0.62	1.98	8
1992.....	1.04	0.37	0.68	2.09	8
1991.....	1.09	0.37	0.69	2.14	7
1990.....	1.13	0.41	0.76	2.30	7
1989.....	1.12	0.42	0.82	2.36	7
1988.....	1.15	0.45	0.87	2.47	6
1987.....	1.15	0.48	0.90	2.53	5
1986.....	1.13	0.50	0.92	2.55	6
1985.....	1.14	0.49	0.98	2.62	5
1984.....	1.15	0.49	1.03	2.67	5
1983.....	1.23	0.49	1.05	2.77	5
1982.....	1.26	0.48	1.10	2.84	5
1981.....	1.25	0.46	1.12	2.83	5
1980.....	1.28	0.46	1.18	2.91	5
1979.....	1.21	0.44	1.17	2.82	5
1978.....	1.18	0.42	1.17	2.77	5
1977.....	1.18	0.38	1.17	2.74	5
North Carolina ^a					
2008.....	1.14	0.34	0.58	2.06	8
2007.....	1.16	0.33	0.56	2.06	9
2006.....	1.15	0.33	0.55	2.02	8
2005.....	1.13	0.30	0.54	1.97	9
2004.....	1.17	0.30	0.53	2.00	8
2003.....	1.21	0.27	0.52	2.00	8
2002.....	1.25	0.27	0.50	2.02	8
2001.....	1.23	0.25	0.51	2.00	8
2000.....	1.19	0.23	0.52	1.94	8

Decile values (1 = highest) apply only to State-level data. Numbers may not sum because of rounding.

Table 3. Per capita ethanol consumption for States, census regions, and the United States, 1977–2008. [Gallons of ethanol, based on population age 14 and older] (Continued)

State or other geographic area	Per capita consumption				U.S. decile for all beverages
	Beer	Wine	Spirits	All beverages	
1999.....	1.16	0.24	0.51	1.90	8
1998.....	1.13	0.23	0.50	1.87	8
1997.....	1.15	0.23	0.51	1.89	8
1996.....	1.14	0.24	0.52	1.90	8
1995.....	1.12	0.22	0.53	1.86	8
1994.....	1.14	0.21	0.54	1.89	8
1993.....	1.14	0.22	0.56	1.92	9
1992.....	1.14	0.23	0.59	1.96	8
1991.....	1.11	0.24	0.60	1.96	9
1990.....	1.16	0.27	0.65	2.08	9
1989.....	1.13	0.27	0.66	2.06	8
1988.....	1.12	0.28	0.68	2.09	8
1987.....	1.11	0.28	0.71	2.10	8
1986.....	1.12	0.30	0.74	2.15	8
1985.....	1.09	0.27	0.76	2.13	8
1984.....	1.11	0.24	0.78	2.13	8
1983.....	1.10	0.22	0.80	2.12	9
1982.....	1.07	0.21	0.85	2.13	9
1981.....	1.10	0.21	0.86	2.17	9
1980.....	1.11	0.20	0.86	2.17	9
1979.....	1.08	0.22	0.88	2.18	8
1978.....	1.06	0.20	0.86	2.12	9
1977.....	1.01	0.20	0.84	2.05	8
North Dakota					
2008.....	1.63	0.24	1.14	3.00	1
2007.....	1.57	0.23	1.08	2.88	2
2006.....	1.52	0.21	1.01	2.74	2
2005.....	1.51	0.19	0.95	2.65	2
2004.....	1.50	0.18	0.83	2.50	3
2003.....	1.54	0.17	0.86	2.56	2
2002.....	1.51	0.16	0.84	2.51	3
2001.....	1.46	0.15	0.80	2.41	3
2000.....	1.47	0.15	0.79	2.41	3
1999.....	1.49	0.15	0.78	2.42	3
1998.....	1.45	0.13	0.76	2.35	3
1997.....	1.40	0.13	0.77	2.30	4
1996.....	1.40	0.13	0.77	2.29	4
1995.....	1.35	0.16	0.77	2.28	4
1994.....	1.39	0.15	0.78	2.32	4
1993.....	1.37	0.15	0.84	2.36	4
1992.....	1.38	0.15	0.85	2.39	5
1991.....	1.43	0.16	0.86	2.44	4
1990.....	1.47	0.17	0.93	2.56	4
1989.....	1.38	0.17	0.84	2.38	6
1988.....	1.38	0.19	0.86	2.43	6
1987.....	1.35	0.20	0.87	2.42	6
1986.....	1.32	0.22	0.86	2.40	7
1985.....	1.33	0.19	0.96	2.48	7
1984.....	1.40	0.17	0.98	2.55	6
1983.....	1.48	0.17	1.05	2.71	6
1982.....	1.52	0.18	1.09	2.79	5
1981.....	1.53	0.18	1.14	2.85	5

Decile values (1 = highest) apply only to State-level data. Numbers may not sum because of rounding.

Table 3. Per capita ethanol consumption for States, census regions, and the United States, 1977–2008. [Gallons of ethanol, based on population age 14 and older] (Continued)

State or other geographic area	Per capita consumption				U.S. decile for all beverages
	Beer	Wine	Spirits	All beverages	
1980.....	1.53	0.17	1.14	2.83	5
1979.....	1.45	0.16	1.10	2.71	6
1978.....	1.45	0.16	1.15	2.76	5
1977.....	1.35	0.15	1.12	2.62	6
Ohio					
2008.....	1.32	0.26	0.46	2.04	9
2007.....	1.33	0.25	0.45	2.03	9
2006.....	1.32	0.24	0.44	2.00	9
2005.....	1.31	0.23	0.43	1.97	9
2004.....	1.33	0.22	0.41	1.96	9
2003.....	1.33	0.22	0.48	2.03	8
2002.....	1.34	0.21	0.47	2.02	8
2001.....	1.33	0.21	0.47	2.00	8
2000.....	1.30	0.19	0.50	1.99	8
1999.....	1.32	0.20	0.48	2.00	8
1998.....	1.31	0.19	0.47	1.97	8
1997.....	1.28	0.18	0.46	1.91	8
1996.....	1.30	0.18	0.45	1.93	8
1995.....	1.28	0.17	0.46	1.90	8
1994.....	1.31	0.16	0.37	1.85	9
1993.....	1.29	0.16	0.50	1.95	8
1992.....	1.32	0.17	0.50	1.98	8
1991.....	1.33	0.18	0.51	2.03	8
1990.....	1.34	0.22	0.53	2.09	8
1989.....	1.35	0.22	0.50	2.07	8
1988.....	1.34	0.24	0.54	2.11	8
1987.....	1.35	0.24	0.59	2.17	8
1986.....	1.32	0.25	0.60	2.17	8
1985.....	1.37	0.25	0.59	2.20	8
1984.....	1.41	0.25	0.61	2.26	8
1983.....	1.36	0.22	0.65	2.22	8
1982.....	1.40	0.22	0.66	2.28	8
1981.....	1.35	0.22	0.68	2.25	8
1980.....	1.39	0.22	0.72	2.33	8
1979.....	1.36	0.20	0.71	2.26	8
1978.....	1.19	0.20	0.70	2.09	9
1977.....	1.17	0.18	0.70	2.04	9
Oklahoma ^b					
2008.....	1.23	0.18	0.58	1.99	9
2007.....	1.18	0.17	0.58	1.93	9
2006.....	1.15	0.17	0.57	1.88	10
2005.....	1.09	0.16	0.55	1.81	10
2004.....	1.10	0.13	0.45	1.69	10
2003.....	1.06	0.13	0.73	1.93	9
2002.....	1.11	0.13	0.58	1.82	10
2001.....	1.11	0.12	0.43	1.65	10
2000.....	1.13	0.12	0.44	1.69	10
1999.....	1.11	0.12	0.44	1.68	10
1998.....	1.12	0.12	0.43	1.68	10
1997.....	1.10	0.12	0.43	1.65	10
1996.....	1.09	0.12	0.45	1.66	10
1995.....	1.10	0.12	0.44	1.66	10

Decile values (1 = highest) apply only to State-level data. Numbers may not sum because of rounding.

Table 3. Per capita ethanol consumption for States, census regions, and the United States, 1977–2008. [Gallons of ethanol, based on population age 14 and older] (Continued)

State or other geographic area	Per capita consumption				U.S. decile for all beverages
	Beer	Wine	Spirits	All beverages	
1994.....	1.15	0.13	0.50	1.78	9
1993.....	1.11	0.11	0.48	1.70	10
1992.....	1.13	0.13	0.55	1.81	9
1991.....	1.09	0.13	0.54	1.76	10
1990.....	1.12	0.14	0.55	1.81	10
1989.....	1.05	0.13	0.53	1.70	10
1988.....	1.05	0.14	0.50	1.69	10
1987.....	1.04	0.15	0.57	1.76	10
1986.....	1.04	0.15	0.61	1.80	10
1985.....	1.04	0.15	0.68	1.87	10
1984.....	1.01	0.16	0.74	1.91	9
1983.....	1.05	0.16	0.77	1.98	9
1982.....	1.17	0.16	0.83	2.17	8
1981.....	1.14	0.16	0.83	2.13	9
1980.....	1.08	0.16	0.71	1.95	9
1979.....	1.05	0.13	0.80	1.98	9
1978.....	1.08	0.14	0.82	2.04	9
1977.....	1.07	0.14	0.78	1.98	9
Oregon					
2008.....	1.21	0.49	0.82	2.53	4
2007.....	1.29	0.49	0.81	2.59	3
2006.....	1.26	0.49	0.78	2.53	4
2005.....	1.23	0.48	0.74	2.46	4
2004.....	1.22	0.49	0.71	2.42	4
2003.....	1.20	0.47	0.68	2.35	5
2002.....	1.22	0.46	0.66	2.34	5
2001.....	1.22	0.43	0.65	2.30	5
2000.....	1.20	0.44	0.64	2.28	5
1999.....	1.21	0.43	0.63	2.27	5
1998.....	1.20	0.43	0.61	2.25	5
1997.....	1.19	0.44	0.60	2.24	5
1996.....	1.23	0.44	0.61	2.27	5
1995.....	1.21	0.42	0.59	2.23	5
1994.....	1.23	0.37	0.62	2.21	6
1993.....	1.24	0.43	0.64	2.31	5
1992.....	1.29	0.46	0.67	2.41	4
1991.....	1.28	0.44	0.67	2.38	5
1990.....	1.32	0.47	0.73	2.51	5
1989.....	1.26	0.46	0.69	2.41	6
1988.....	1.27	0.51	0.71	2.48	5
1987.....	1.26	0.53	0.72	2.50	6
1986.....	1.26	0.54	0.73	2.54	6
1985.....	1.25	0.55	0.77	2.57	6
1984.....	1.28	0.53	0.82	2.63	6
1983.....	1.31	0.53	0.85	2.69	6
1982.....	1.33	0.53	0.88	2.74	6
1981.....	1.38	0.50	0.92	2.80	6
1980.....	1.37	0.51	0.94	2.82	5
1979.....	1.39	0.47	0.96	2.82	5
1978.....	1.34	0.47	0.98	2.79	5
1977.....	1.33	0.46	0.96	2.74	5

Decile values (1 = highest) apply only to State-level data. Numbers may not sum because of rounding.

Table 3. Per capita ethanol consumption for States, census regions, and the United States, 1977–2008. [Gallons of ethanol, based on population age 14 and older] (Continued)

State or other geographic area	Per capita consumption				U.S. decile for all beverages
	Beer	Wine	Spirits	All beverages	
Pennsylvania					
2008.....	1.36	0.23	0.60	2.19	8
2007.....	1.34	0.24	0.59	2.16	8
2006.....	1.30	0.24	0.57	2.12	8
2005.....	1.29	0.24	0.55	2.08	8
2004.....	1.30	0.24	0.54	2.08	8
2003.....	1.30	0.23	0.51	2.04	8
2002.....	1.35	0.22	0.49	2.06	8
2001.....	1.32	0.20	0.48	2.00	8
2000.....	1.21	0.21	0.47	1.90	9
1999.....	1.20	0.21	0.46	1.87	9
1998.....	1.21	0.19	0.45	1.86	9
1997.....	1.20	0.19	0.44	1.84	9
1996.....	1.22	0.19	0.45	1.86	9
1995.....	1.23	0.18	0.45	1.86	9
1994.....	1.28	0.18	0.47	1.93	8
1993.....	1.31	0.17	0.48	1.96	8
1992.....	1.30	0.18	0.51	1.99	8
1991.....	1.36	0.17	0.52	2.05	8
1990.....	1.42	0.18	0.55	2.15	8
1989.....	1.36	0.18	0.56	2.10	7
1988.....	1.39	0.19	0.53	2.11	8
1987.....	1.38	0.20	0.61	2.20	8
1986.....	1.38	0.21	0.64	2.23	8
1985.....	1.37	0.21	0.65	2.22	8
1984.....	1.37	0.21	0.66	2.25	8
1983.....	1.41	0.22	0.67	2.29	8
1982.....	1.44	0.23	0.70	2.36	8
1981.....	1.42	0.23	0.72	2.37	8
1980.....	1.45	0.22	0.71	2.39	7
1979.....	1.42	0.22	0.73	2.37	8
1978.....	1.36	0.21	0.74	2.32	8
1977.....	1.35	0.20	0.74	2.29	8
Rhode Island					
2008.....	1.13	0.54	0.91	2.58	4
2007.....	1.13	0.54	0.90	2.56	4
2006.....	1.13	0.53	0.86	2.52	4
2005.....	1.13	0.51	0.81	2.45	4
2004.....	1.12	0.49	0.79	2.40	5
2003.....	1.12	0.51	0.79	2.42	3
2002.....	1.17	0.48	0.73	2.38	4
2001.....	1.19	0.46	0.70	2.35	4
2000.....	1.15	0.46	0.70	2.31	5
1999.....	1.14	0.45	0.69	2.28	4
1998.....	1.14	0.47	0.63	2.24	5
1997.....	1.22	0.44	0.64	2.30	4
1996.....	1.16	0.42	0.65	2.24	5
1995.....	1.19	0.38	0.60	2.17	6
1994.....	1.23	0.38	0.66	2.27	5
1993.....	1.22	0.36	0.69	2.27	6
1992.....	1.24	0.39	0.70	2.33	6
1991.....	1.33	0.37	0.71	2.41	4

Decile values (1 = highest) apply only to State-level data. Numbers may not sum because of rounding.

Table 3. Per capita ethanol consumption for States, census regions, and the United States, 1977–2008. [Gallons of ethanol, based on population age 14 and older] (Continued)

State or other geographic area	Per capita consumption				U.S. decile for all beverages
	Beer	Wine	Spirits	All beverages	
1990.....	1.31	0.44	0.79	2.54	5
1989.....	1.37	0.46	0.87	2.69	3
1988.....	1.39	0.49	0.97	2.85	3
1987.....	1.40	0.51	0.94	2.85	3
1986.....	1.41	0.53	0.93	2.86	3
1985.....	1.40	0.51	1.03	2.94	3
1984.....	1.37	0.52	1.03	2.92	3
1983.....	1.48	0.50	1.06	3.04	3
1982.....	1.34	0.55	1.04	2.93	4
1981.....	1.36	0.52	1.04	2.92	4
1980.....	1.46	0.53	1.14	3.14	3
1979.....	1.46	0.50	1.11	3.07	3
1978.....	1.41	0.50	1.16	3.07	3
1977.....	1.39	0.43	1.12	2.93	4
South Carolina					
2008.....	1.41	0.24	0.77	2.42	5
2007.....	1.43	0.24	0.77	2.44	5
2006.....	1.46	0.24	0.77	2.46	5
2005.....	1.41	0.24	0.76	2.41	5
2004.....	1.44	0.24	0.76	2.44	4
2003.....	1.38	0.23	0.74	2.35	5
2002.....	1.47	0.22	0.67	2.36	4
2001.....	1.45	0.22	0.65	2.32	4
2000.....	1.45	0.22	0.70	2.37	4
1999.....	1.43	0.22	0.72	2.38	3
1998.....	1.42	0.21	0.72	2.35	3
1997.....	1.40	0.19	0.71	2.30	4
1996.....	1.39	0.21	0.71	2.31	4
1995.....	1.38	0.18	0.67	2.23	5
1994.....	1.38	0.17	0.74	2.29	4
1993.....	1.36	0.20	0.75	2.30	5
1992.....	1.34	0.20	0.79	2.33	5
1991.....	1.34	0.22	0.84	2.41	5
1990.....	1.44	0.25	0.92	2.61	4
1989.....	1.37	0.24	0.86	2.47	5
1988.....	1.37	0.26	0.89	2.51	5
1987.....	1.34	0.27	0.88	2.49	6
1986.....	1.30	0.27	0.92	2.50	6
1985.....	1.26	0.25	0.99	2.49	6
1984.....	1.26	0.24	1.00	2.50	7
1983.....	1.26	0.20	1.01	2.47	7
1982.....	1.24	0.20	1.00	2.44	7
1981.....	1.25	0.19	1.05	2.49	7
1980.....	1.22	0.18	1.06	2.46	7
1979.....	1.25	0.17	1.18	2.60	7
1978.....	1.20	0.17	1.21	2.59	7
1977.....	1.17	0.17	1.14	2.49	7
South Dakota					
2008.....	1.56	0.22	0.86	2.64	3
2007.....	1.51	0.22	0.86	2.59	4
2006.....	1.51	0.19	0.79	2.48	4
2005.....	1.50	0.19	0.83	2.52	3

Decile values (1 = highest) apply only to State-level data. Numbers may not sum because of rounding.

Table 3. Per capita ethanol consumption for States, census regions, and the United States, 1977–2008. [Gallons of ethanol, based on population age 14 and older] (Continued)

State or other geographic area	Per capita consumption				U.S. decile for all beverages
	Beer	Wine	Spirits	All beverages	
2004.....	1.50	0.18	0.76	2.43	4
2003.....	1.51	0.16	0.73	2.40	4
2002.....	1.51	0.16	0.70	2.37	4
2001.....	1.46	0.15	0.71	2.31	4
2000.....	1.44	0.15	0.68	2.27	5
1999.....	1.43	0.14	0.70	2.27	5
1998.....	1.42	0.13	0.68	2.24	5
1997.....	1.36	0.13	0.69	2.18	6
1996.....	1.36	0.13	0.68	2.18	6
1995.....	1.34	0.12	0.73	2.20	6
1994.....	1.38	0.12	0.73	2.24	5
1993.....	1.35	0.12	0.73	2.20	6
1992.....	1.37	0.15	0.74	2.26	6
1991.....	1.37	0.15	0.76	2.27	6
1990.....	1.36	0.18	0.80	2.34	6
1989.....	1.25	0.15	0.70	2.09	8
1988.....	1.21	0.16	0.76	2.13	8
1987.....	1.24	0.19	0.79	2.22	8
1986.....	1.22	0.19	0.81	2.23	8
1985.....	1.22	0.18	0.94	2.34	8
1984.....	1.27	0.17	0.89	2.33	7
1983.....	1.30	0.17	0.95	2.43	7
1982.....	1.29	0.18	0.98	2.45	7
1981.....	1.32	0.19	1.05	2.56	7
1980.....	1.30	0.18	1.07	2.56	7
1979.....	1.23	0.17	1.04	2.44	7
1978.....	1.19	0.17	1.05	2.42	7
1977.....	1.15	0.17	1.06	2.38	7
Tennessee					
2008.....	1.10	0.20	0.57	1.87	10
2007.....	1.13	0.20	0.56	1.89	10
2006.....	1.14	0.19	0.56	1.89	9
2005.....	1.19	0.19	0.55	1.93	9
2004.....	1.21	0.18	0.53	1.92	9
2003.....	1.26	0.18	0.52	1.96	9
2002.....	1.17	0.17	0.51	1.85	9
2001.....	1.13	0.16	0.50	1.79	9
2000.....	1.21	0.15	0.50	1.86	9
1999.....	1.21	0.15	0.49	1.86	9
1998.....	1.19	0.15	0.50	1.84	9
1997.....	1.16	0.16	0.50	1.82	9
1996.....	1.18	0.15	0.51	1.84	9
1995.....	1.18	0.15	0.52	1.84	9
1994.....	1.18	0.15	0.53	1.86	9
1993.....	1.20	0.14	0.54	1.87	9
1992.....	1.21	0.14	0.56	1.90	9
1991.....	1.19	0.13	0.54	1.87	9
1990.....	1.22	0.14	0.60	1.96	9
1989.....	1.18	0.14	0.59	1.90	9
1988.....	1.20	0.14	0.60	1.95	9
1987.....	1.17	0.15	0.62	1.94	9
1986.....	1.17	0.16	0.63	1.96	9

Decile values (1 = highest) apply only to State-level data. Numbers may not sum because of rounding.

Table 3. Per capita ethanol consumption for States, census regions, and the United States, 1977–2008. [Gallons of ethanol, based on population age 14 and older] (Continued)

State or other geographic area	Per capita consumption				U.S. decile for all beverages
	Beer	Wine	Spirits	All beverages	
1985.....	1.11	0.16	0.67	1.94	9
1984.....	1.11	0.15	0.70	1.95	9
1983.....	1.10	0.14	0.69	1.93	10
1982.....	1.13	0.14	0.70	1.96	10
1981.....	1.14	0.13	0.72	1.98	10
1980.....	1.10	0.12	0.69	1.92	9
1979.....	1.14	0.11	0.73	1.98	9
1978.....	1.16	0.11	0.72	1.99	9
1977.....	1.10	0.10	0.71	1.91	10
Texas					
2008.....	1.44	0.27	0.58	2.29	7
2007.....	1.41	0.27	0.56	2.25	7
2006.....	1.43	0.26	0.55	2.24	7
2005.....	1.42	0.25	0.53	2.19	7
2004.....	1.45	0.24	0.52	2.21	6
2003.....	1.46	0.23	0.51	2.19	6
2002.....	1.50	0.22	0.50	2.21	6
2001.....	1.51	0.21	0.49	2.21	6
2000.....	1.53	0.22	0.50	2.25	6
1999.....	1.54	0.20	0.49	2.23	6
1998.....	1.53	0.23	0.49	2.25	5
1997.....	1.54	0.20	0.47	2.22	5
1996.....	1.56	0.22	0.49	2.26	5
1995.....	1.55	0.19	0.49	2.23	5
1994.....	1.60	0.20	0.51	2.31	4
1993.....	1.60	0.20	0.53	2.33	4
1992.....	1.65	0.24	0.55	2.45	4
1991.....	1.60	0.25	0.55	2.40	5
1990.....	1.64	0.26	0.58	2.47	6
1989.....	1.62	0.26	0.58	2.46	5
1988.....	1.61	0.28	0.59	2.47	6
1987.....	1.61	0.29	0.61	2.51	6
1986.....	1.67	0.31	0.65	2.63	5
1985.....	1.68	0.30	0.73	2.70	5
1984.....	1.74	0.28	0.79	2.82	4
1983.....	1.73	0.27	0.79	2.79	5
1982.....	1.83	0.18	0.84	2.85	4
1981.....	1.84	0.24	0.85	2.93	4
1980.....	1.77	0.22	0.81	2.80	6
1979.....	1.76	0.14	0.87	2.77	5
1978.....	1.70	0.14	0.84	2.68	6
1977.....	1.63	0.14	0.81	2.58	6
Utah					
2008.....	0.75	0.17	0.46	1.37	10
2007.....	0.75	0.16	0.43	1.34	10
2006.....	0.71	0.16	0.43	1.30	10
2005.....	0.69	0.16	0.41	1.26	10
2004.....	0.75	0.15	0.39	1.28	10
2003.....	0.77	0.15	0.39	1.31	10
2002.....	0.78	0.14	0.39	1.31	10
2001.....	0.76	0.14	0.39	1.29	10
2000.....	0.77	0.11	0.40	1.27	10

Decile values (1 = highest) apply only to State-level data. Numbers may not sum because of rounding.

Table 3. Per capita ethanol consumption for States, census regions, and the United States, 1977–2008. [Gallons of ethanol, based on population age 14 and older] (Continued)

State or other geographic area	Per capita consumption				U.S. decile for all beverages
	Beer	Wine	Spirits	All beverages	
1999.....	0.79	0.10	0.38	1.27	10
1998.....	0.73	0.10	0.37	1.20	10
1997.....	0.76	0.10	0.39	1.25	10
1996.....	0.77	0.10	0.37	1.24	10
1995.....	0.75	0.09	0.37	1.21	10
1994.....	0.76	0.09	0.38	1.24	10
1993.....	0.78	0.11	0.39	1.28	10
1992.....	0.79	0.12	0.42	1.33	10
1991.....	0.80	0.12	0.43	1.34	10
1990.....	0.80	0.12	0.46	1.39	10
1989.....	0.82	0.13	0.47	1.42	10
1988.....	0.83	0.14	0.49	1.45	10
1987.....	0.84	0.15	0.50	1.49	10
1986.....	0.89	0.17	0.52	1.58	10
1985.....	0.90	0.15	0.53	1.58	10
1984.....	0.88	0.14	0.52	1.53	10
1983.....	0.88	0.14	0.50	1.52	10
1982.....	1.01	0.15	0.55	1.71	10
1981.....	1.01	0.15	0.58	1.74	10
1980.....	0.96	0.14	0.60	1.71	10
1979.....	0.97	0.16	0.62	1.75	10
1978.....	0.96	0.15	0.61	1.72	10
1977.....	0.97	0.14	0.59	1.70	10
Vermont					
2008.....	1.37	0.62	0.71	2.70	3
2007.....	1.37	0.61	0.70	2.68	3
2006.....	1.35	0.58	0.69	2.62	3
2005.....	1.33	0.56	0.67	2.56	3
2004.....	1.32	0.54	0.66	2.52	3
2003.....	1.32	0.51	0.64	2.47	3
2002.....	1.32	0.49	0.63	2.44	3
2001.....	1.29	0.47	0.63	2.39	4
2000.....	1.23	0.47	0.63	2.34	4
1999.....	1.23	0.47	0.62	2.32	4
1998.....	1.25	0.47	0.62	2.34	4
1997.....	1.23	0.46	0.63	2.33	4
1996.....	1.29	0.46	0.64	2.38	3
1995.....	1.27	0.41	0.66	2.34	3
1994.....	1.34	0.42	0.74	2.50	3
1993.....	1.34	0.44	0.74	2.52	2
1992.....	1.35	0.44	0.78	2.57	3
1991.....	1.41	0.46	0.82	2.69	2
1990.....	1.47	0.48	0.85	2.80	2
1989.....	1.45	0.51	0.88	2.84	2
1988.....	1.51	0.56	0.93	3.00	2
1987.....	1.56	0.58	0.98	3.11	1
1986.....	1.55	0.59	1.04	3.17	1
1985.....	1.49	0.55	1.09	3.13	2
1984.....	1.48	0.49	1.15	3.12	2
1983.....	1.52	0.50	1.19	3.21	2
1982.....	1.49	0.50	1.25	3.24	2
1981.....	1.49	0.50	1.33	3.32	2

Decile values (1 = highest) apply only to State-level data. Numbers may not sum because of rounding.

Table 3. Per capita ethanol consumption for States, census regions, and the United States, 1977–2008. [Gallons of ethanol, based on population age 14 and older] (Continued)

State or other geographic area	Per capita consumption				U.S. decile for all beverages
	Beer	Wine	Spirits	All beverages	
1980.....	1.43	0.48	1.39	3.30	2
1979.....	1.57	0.47	1.50	3.54	1
1978.....	1.53	0.47	1.59	3.59	1
1977.....	1.42	0.44	1.58	3.44	1
Virginia					
2008.....	1.14	0.42	0.59	2.14	8
2007.....	1.13	0.41	0.58	2.13	8
2006.....	1.14	0.39	0.57	2.10	8
2005.....	1.13	0.38	0.55	2.06	8
2004.....	1.14	0.37	0.54	2.06	8
2003.....	1.14	0.36	0.53	2.03	8
2002.....	1.15	0.34	0.51	2.00	8
2001.....	1.15	0.32	0.50	1.98	8
2000.....	1.16	0.31	0.50	1.97	8
1999.....	1.18	0.32	0.47	1.96	8
1998.....	1.18	0.29	0.47	1.94	8
1997.....	1.13	0.29	0.48	1.90	8
1996.....	1.13	0.30	0.49	1.92	8
1995.....	1.15	0.29	0.49	1.93	8
1994.....	1.20	0.27	0.51	1.99	8
1993.....	1.24	0.27	0.54	2.05	8
1992.....	1.25	0.28	0.57	2.10	7
1991.....	1.20	0.28	0.58	2.06	8
1990.....	1.25	0.30	0.62	2.18	8
1989.....	1.23	0.31	0.65	2.19	7
1988.....	1.31	0.25	0.68	2.24	7
1987.....	1.40	0.26	0.71	2.36	7
1986.....	1.52	0.27	0.73	2.53	6
1985.....	1.46	0.30	0.79	2.55	6
1984.....	1.46	0.29	0.80	2.55	6
1983.....	1.47	0.27	0.82	2.57	6
1982.....	1.45	0.27	0.86	2.59	6
1981.....	1.23	0.27	0.89	2.39	7
1980.....	1.23	0.25	0.91	2.39	7
1979.....	1.23	0.25	0.92	2.40	8
1978.....	1.22	0.21	0.90	2.33	8
1977.....	1.19	0.21	0.90	2.30	7
Washington					
2008.....	1.09	0.50	0.76	2.35	6
2007.....	1.11	0.50	0.74	2.35	6
2006.....	1.05	0.48	0.71	2.24	7
2005.....	1.10	0.55	0.68	2.33	6
2004.....	1.04	0.46	0.69	2.20	7
2003.....	1.05	0.46	0.67	2.19	7
2002.....	1.08	0.42	0.65	2.16	7
2001.....	1.08	0.40	0.65	2.13	7
2000.....	1.09	0.41	0.66	2.16	7
1999.....	1.10	0.40	0.63	2.13	7
1998.....	1.12	0.43	0.63	2.18	6
1997.....	1.11	0.42	0.63	2.16	6
1996.....	1.13	0.40	0.63	2.16	6
1995.....	1.14	0.40	0.63	2.17	6

Decile values (1 = highest) apply only to State-level data. Numbers may not sum because of rounding.

Table 3. Per capita ethanol consumption for States, census regions, and the United States, 1977–2008. [Gallons of ethanol, based on population age 14 and older] (Continued)

State or other geographic area	Per capita consumption				U.S. decile for all beverages
	Beer	Wine	Spirits	All beverages	
1994.....	1.18	0.39	0.65	2.23	6
1993.....	1.19	0.39	0.69	2.27	5
1992.....	1.26	0.46	0.72	2.44	4
1991.....	1.23	0.43	0.73	2.39	5
1990.....	1.27	0.46	0.76	2.49	5
1989.....	1.24	0.47	0.75	2.45	5
1988.....	1.22	0.50	0.77	2.49	5
1987.....	1.23	0.56	0.79	2.58	5
1986.....	1.23	0.61	0.82	2.65	5
1985.....	1.22	0.59	0.87	2.68	5
1984.....	1.24	0.57	0.91	2.71	5
1983.....	1.29	0.54	0.94	2.76	5
1982.....	1.33	0.53	0.99	2.85	4
1981.....	1.38	0.54	1.05	2.97	4
1980.....	1.52	0.52	1.08	3.12	3
1979.....	1.41	0.48	1.10	2.99	4
1978.....	1.39	0.48	1.09	2.96	4
1977.....	1.36	0.45	1.08	2.89	4
West Virginia					
2008.....	1.26	0.10	0.44	1.80	10
2007.....	1.24	0.10	0.42	1.76	10
2006.....	1.22	0.10	0.42	1.74	10
2005.....	1.23	0.10	0.40	1.73	10
2004.....	1.25	0.10	0.39	1.75	10
2003.....	1.23	0.10	0.38	1.71	10
2002.....	1.26	0.10	0.38	1.74	10
2001.....	1.23	0.10	0.37	1.70	10
2000.....	1.18	0.10	0.35	1.64	10
1999.....	1.18	0.10	0.37	1.66	10
1998.....	1.17	0.10	0.36	1.63	10
1997.....	1.14	0.10	0.37	1.60	10
1996.....	1.14	0.10	0.37	1.61	10
1995.....	1.14	0.09	0.38	1.61	10
1994.....	1.17	0.08	0.39	1.64	10
1993.....	1.18	0.08	0.40	1.67	10
1992.....	1.16	0.09	0.41	1.66	10
1991.....	1.18	0.09	0.43	1.70	10
1990.....	1.20	0.10	0.42	1.72	10
1989.....	1.12	0.11	0.38	1.60	10
1988.....	1.12	0.12	0.40	1.64	10
1987.....	1.11	0.13	0.41	1.64	10
1986.....	1.10	0.13	0.41	1.64	10
1985.....	1.11	0.13	0.42	1.66	10
1984.....	1.12	0.12	0.44	1.68	10
1983.....	1.13	0.13	0.48	1.74	10
1982.....	1.11	0.14	0.55	1.80	10
1981.....	1.06	0.14	0.66	1.85	10
1980.....	1.00	0.09	0.72	1.82	10
1979.....	0.97	0.09	0.77	1.83	10
1978.....	0.96	0.09	0.79	1.84	10
1977.....	0.98	0.09	0.78	1.85	10

Decile values (1 = highest) apply only to State-level data. Numbers may not sum because of rounding.

Table 3. Per capita ethanol consumption for States, census regions, and the United States, 1977–2008. [Gallons of ethanol, based on population age 14 and older] (Continued)

State or other geographic area	Per capita consumption				U.S. decile for all beverages
	Beer	Wine	Spirits	All beverages	
Wisconsin					
2008.....	1.53	0.34	1.12	2.99	2
2007.....	1.54	0.33	1.11	2.98	1
2006.....	1.56	0.32	1.09	2.96	1
2005.....	1.55	0.31	1.07	2.92	1
2004.....	1.52	0.30	1.01	2.83	1
2003.....	1.52	0.29	1.00	2.81	2
2002.....	1.56	0.28	0.98	2.81	2
2001.....	1.53	0.26	0.95	2.74	2
2000.....	1.54	0.27	0.95	2.76	1
1999.....	1.53	0.26	0.92	2.72	2
1998.....	1.61	0.26	0.79	2.65	2
1997.....	1.57	0.25	0.89	2.71	1
1996.....	1.53	0.24	0.88	2.65	1
1995.....	1.55	0.23	0.87	2.65	1
1994.....	1.58	0.22	0.91	2.72	2
1993.....	1.59	0.22	0.89	2.71	1
1992.....	1.59	0.25	0.90	2.74	2
1991.....	1.65	0.27	0.84	2.76	1
1990.....	1.74	0.31	1.03	3.07	1
1989.....	1.71	0.31	0.95	2.96	1
1988.....	1.75	0.33	0.95	3.02	2
1987.....	1.78	0.36	0.97	3.11	2
1986.....	1.87	0.34	0.95	3.16	2
1985.....	1.82	0.32	1.05	3.19	1
1984.....	1.86	0.30	1.03	3.19	2
1983.....	1.93	0.33	1.07	3.33	2
1982.....	1.93	0.30	1.04	3.27	2
1981.....	1.95	0.31	1.20	3.47	1
1980.....	1.96	0.31	1.20	3.46	1
1979.....	1.88	0.28	1.17	3.33	3
1978.....	1.80	0.28	1.18	3.25	2
1977.....	1.78	0.27	1.26	3.31	2
Wyoming					
2008.....	1.54	0.23	1.12	2.89	2
2007.....	1.49	0.23	1.10	2.82	2
2006.....	1.47	0.23	1.05	2.74	2
2005.....	1.21	0.23	0.97	2.40	5
2004.....	1.41	0.22	0.92	2.55	3
2003.....	1.69	0.23	0.90	2.82	1
2002.....	1.46	0.22	0.88	2.56	2
2001.....	1.43	0.22	0.88	2.52	2
2000.....	1.42	0.18	0.86	2.46	3
1999.....	1.41	0.18	0.84	2.43	3
1998.....	1.38	0.20	0.81	2.40	3
1997.....	1.36	0.17	0.81	2.33	3
1996.....	1.37	0.16	0.81	2.34	3
1995.....	1.34	0.16	0.80	2.29	4
1994.....	1.42	0.18	0.83	2.43	3
1993.....	1.40	0.19	0.86	2.45	3
1992.....	1.44	0.20	0.91	2.56	3
1991.....	1.45	0.20	0.90	2.56	3

Decile values (1 = highest) apply only to State-level data. Numbers may not sum because of rounding.

Table 3. Per capita ethanol consumption for States, census regions, and the United States, 1977–2008. [Gallons of ethanol, based on population age 14 and older] (Continued)

State or other geographic area	Per capita consumption				U.S. decile for all beverages
	Beer	Wine	Spirits	All beverages	
1990.....	1.48	0.22	0.93	2.63	3
1989.....	1.35	0.22	0.82	2.38	6
1988.....	1.39	0.23	0.83	2.46	6
1987.....	1.46	0.24	0.86	2.56	5
1986.....	1.46	0.26	0.92	2.64	5
1985.....	1.56	0.25	1.03	2.84	3
1984.....	1.58	0.22	1.05	2.86	4
1983.....	1.66	0.22	1.09	2.98	4
1982.....	1.80	0.24	1.21	3.25	2
1981.....	1.91	0.24	1.27	3.42	2
1980.....	1.85	0.24	1.32	3.42	2
1979.....	1.86	0.22	1.30	3.38	2
1978.....	1.82	0.22	1.36	3.41	2
1977.....	1.79	0.21	1.32	3.31	2
Northeast region					
2008.....	1.08	0.46	0.75	2.29	
2007.....	1.06	0.46	0.75	2.28	
2006.....	1.06	0.45	0.73	2.24	
2005.....	1.05	0.43	0.72	2.20	
2004.....	1.07	0.43	0.70	2.19	
2003.....	1.07	0.41	0.68	2.17	
2002.....	1.10	0.40	0.66	2.16	
2001.....	1.10	0.38	0.64	2.12	
2000.....	1.06	0.38	0.66	2.10	
1999.....	1.05	0.38	0.63	2.06	
1998.....	1.07	0.37	0.60	2.04	
1997.....	1.06	0.36	0.63	2.06	
1996.....	1.08	0.36	0.64	2.07	
1995.....	1.09	0.36	0.64	2.09	
1994.....	1.11	0.34	0.67	2.12	
1993.....	1.13	0.34	0.68	2.15	
1992.....	1.14	0.35	0.72	2.21	
1991.....	1.19	0.34	0.73	2.26	
1990.....	1.23	0.38	0.80	2.41	
1989.....	1.22	0.39	0.84	2.44	
1988.....	1.25	0.40	0.86	2.52	
1987.....	1.25	0.43	0.91	2.60	
1986.....	1.25	0.44	0.93	2.62	
1985.....	1.25	0.43	0.98	2.66	
1984.....	1.25	0.43	1.01	2.70	
1983.....	1.31	0.43	1.03	2.76	
1982.....	1.31	0.43	1.05	2.79	
1981.....	1.31	0.41	1.07	2.80	
1980.....	1.34	0.40	1.10	2.84	
1979.....	1.30	0.38	1.09	2.77	
1978.....	1.26	0.36	1.10	2.73	
1977.....	1.25	0.34	1.10	2.69	
Midwest region					
2008.....	1.27	0.29	0.76	2.32	
2007.....	1.27	0.30	0.74	2.30	
2006.....	1.26	0.28	0.72	2.26	
2005.....	1.26	0.27	0.71	2.23	

Decile values (1 = highest) apply only to State-level data. Numbers may not sum because of rounding.

Table 3. Per capita ethanol consumption for States, census regions, and the United States, 1977–2008. [Gallons of ethanol, based on population age 14 and older] (Continued)

State or other geographic area	Per capita consumption				U.S. decile for all beverages
	Beer	Wine	Spirits	All beverages	
2004.....	1.27	0.26	0.68	2.20	
2003.....	1.28	0.26	0.69	2.22	
2002.....	1.30	0.24	0.65	2.20	
2001.....	1.29	0.24	0.66	2.18	
2000.....	1.29	0.23	0.66	2.18	
1999.....	1.29	0.24	0.65	2.17	
1998.....	1.28	0.23	0.63	2.14	
1997.....	1.26	0.23	0.63	2.12	
1996.....	1.27	0.23	0.62	2.12	
1995.....	1.27	0.22	0.63	2.12	
1994.....	1.30	0.22	0.63	2.14	
1993.....	1.30	0.22	0.67	2.18	
1992.....	1.31	0.23	0.68	2.21	
1991.....	1.35	0.23	0.67	2.25	
1990.....	1.38	0.26	0.74	2.37	
1989.....	1.34	0.26	0.71	2.31	
1988.....	1.36	0.28	0.74	2.38	
1987.....	1.37	0.29	0.76	2.42	
1986.....	1.37	0.30	0.78	2.44	
1985.....	1.37	0.28	0.83	2.48	
1984.....	1.39	0.27	0.84	2.50	
1983.....	1.41	0.25	0.87	2.53	
1982.....	1.42	0.27	0.88	2.56	
1981.....	1.42	0.26	0.93	2.61	
1980.....	1.42	0.24	0.96	2.63	
1979.....	1.41	0.23	0.95	2.58	
1978.....	1.35	0.22	0.96	2.53	
1977.....	1.32	0.21	0.96	2.49	
South region					
2008.....	1.25	0.31	0.69	2.25	
2007.....	1.26	0.31	0.68	2.25	
2006.....	1.27	0.30	0.67	2.24	
2005.....	1.25	0.29	0.66	2.20	
2004.....	1.27	0.29	0.64	2.20	
2003.....	1.27	0.27	0.64	2.18	
2002.....	1.29	0.26	0.62	2.17	
2001.....	1.29	0.25	0.60	2.14	
2000.....	1.30	0.25	0.61	2.16	
1999.....	1.30	0.25	0.60	2.15	
1998.....	1.28	0.24	0.60	2.12	
1997.....	1.28	0.23	0.60	2.12	
1996.....	1.29	0.24	0.61	2.14	
1995.....	1.29	0.22	0.61	2.12	
1994.....	1.31	0.22	0.64	2.16	
1993.....	1.33	0.22	0.66	2.20	
1992.....	1.33	0.23	0.69	2.26	
1991.....	1.31	0.23	0.69	2.23	
1990.....	1.36	0.26	0.74	2.36	
1989.....	1.33	0.26	0.73	2.31	
1988.....	1.33	0.27	0.74	2.34	
1987.....	1.33	0.27	0.77	2.37	
1986.....	1.35	0.28	0.79	2.42	

Decile values (1 = highest) apply only to State-level data. Numbers may not sum because of rounding.

Table 3. Per capita ethanol consumption for States, census regions, and the United States, 1977–2008. [Gallons of ethanol, based on population age 14 and older] (Continued)

State or other geographic area	Per capita consumption				U.S. decile for all beverages
	Beer	Wine	Spirits	All beverages	
1985.....	1.33	0.27	0.85	2.46	
1984.....	1.34	0.27	0.90	2.51	
1983.....	1.36	0.25	0.91	2.52	
1982.....	1.37	0.23	0.95	2.55	
1981.....	1.36	0.24	0.98	2.58	
1980.....	1.31	0.23	0.98	2.51	
1979.....	1.32	0.21	1.03	2.55	
1978.....	1.29	0.20	1.03	2.52	
1977.....	1.25	0.19	1.01	2.44	
West region					
2008.....	1.15	0.51	0.77	2.43	
2007.....	1.17	0.50	0.77	2.43	
2006.....	1.14	0.49	0.75	2.38	
2005.....	1.12	0.48	0.73	2.33	
2004.....	1.15	0.47	0.71	2.33	
2003.....	1.16	0.46	0.69	2.31	
2002.....	1.18	0.44	0.68	2.30	
2001.....	1.19	0.43	0.68	2.30	
2000.....	1.18	0.43	0.67	2.29	
1999.....	1.19	0.42	0.65	2.27	
1998.....	1.19	0.42	0.65	2.25	
1997.....	1.20	0.43	0.65	2.28	
1996.....	1.21	0.43	0.67	2.30	
1995.....	1.22	0.40	0.66	2.28	
1994.....	1.20	0.41	0.70	2.31	
1993.....	1.26	0.42	0.72	2.39	
1992.....	1.33	0.45	0.76	2.54	
1991.....	1.30	0.44	0.76	2.50	
1990.....	1.37	0.50	0.84	2.71	
1989.....	1.36	0.51	0.84	2.71	
1988.....	1.37	0.57	0.87	2.80	
1987.....	1.39	0.62	0.89	2.90	
1986.....	1.40	0.65	0.92	2.98	
1985.....	1.37	0.65	1.00	3.02	
1984.....	1.41	0.61	1.04	3.05	
1983.....	1.42	0.61	1.07	3.11	
1982.....	1.45	0.60	1.11	3.15	
1981.....	1.49	0.60	1.16	3.26	
1980.....	1.48	0.59	1.20	3.26	
1979.....	1.49	0.58	1.24	3.31	
1978.....	1.43	0.56	1.27	3.26	
1977.....	1.38	0.54	1.22	3.15	
U.S. total					
2008.....	1.20	0.38	0.73	2.32	
2007.....	1.20	0.38	0.73	2.31	
2006.....	1.20	0.37	0.71	2.28	
2005.....	1.19	0.36	0.70	2.24	
2004.....	1.21	0.35	0.68	2.23	
2003.....	1.21	0.34	0.67	2.22	
2002.....	1.23	0.33	0.65	2.20	
2001.....	1.23	0.31	0.64	2.18	
2000.....	1.22	0.31	0.65	2.18	

Decile values (1 = highest) apply only to State-level data. Numbers may not sum because of rounding.

Table 3. Per capita ethanol consumption for States, census regions, and the United States, 1977–2008. [Gallons of ethanol, based on population age 14 and older] (Continued)

State or other geographic area	Per capita consumption				U.S. decile for all beverages
	Beer	Wine	Spirits	All beverages	
1999.....	1.23	0.31	0.63	2.16	
1998.....	1.22	0.30	0.62	2.14	
1997.....	1.22	0.30	0.62	2.14	
1996.....	1.23	0.30	0.63	2.16	
1995.....	1.23	0.29	0.63	2.15	
1994.....	1.25	0.28	0.65	2.18	
1993.....	1.26	0.28	0.68	2.23	
1992.....	1.29	0.30	0.71	2.30	
1991.....	1.29	0.30	0.71	2.30	
1990.....	1.34	0.33	0.77	2.45	
1989.....	1.31	0.34	0.77	2.42	
1988.....	1.33	0.36	0.79	2.48	
1987.....	1.34	0.38	0.82	2.54	
1986.....	1.34	0.39	0.84	2.58	
1985.....	1.33	0.38	0.90	2.62	
1984.....	1.35	0.37	0.94	2.65	
1983.....	1.37	0.36	0.96	2.69	
1982.....	1.38	0.36	0.98	2.72	
1981.....	1.39	0.35	1.02	2.76	
1980.....	1.38	0.34	1.04	2.76	
1979.....	1.37	0.32	1.06	2.75	
1978.....	1.33	0.31	1.07	2.71	
1977.....	1.29	0.29	1.06	2.64	

^a There are minor changes in the data for wine consumption for 2004–2008, as State data have replaced the industry data that were used previously.

^b There are minor changes in the data for beer consumption for 2004–2006, as industry data have replaced the State data that were used previously.

Decile values (1 = highest) apply only to State-level data. Numbers may not sum because of rounding.