



National Institute on Alcohol Abuse and Alcoholism  
Division of Epidemiology and Prevention Research  
Alcohol Epidemiologic Data System

## **SURVEILLANCE REPORT #85**

### **APPARENT PER CAPITA ALCOHOL CONSUMPTION: NATIONAL, STATE, AND REGIONAL TRENDS, 1977–2006**

Nekisha E. Lakins, M.A.  
Robin A. LaVallee, B.A.  
Gerald D. Williams, D.Ed.  
Hsiao-ye Yi, Ph.D.

CSR, Incorporated<sup>1</sup>  
Suite 1000  
2107 Wilson Boulevard  
Arlington, VA 22201

**November 2008**

U.S. Department of Health and Human Services  
Public Health Service  
National Institutes of Health

<sup>1</sup> CSR, Incorporated, operates the Alcohol Epidemiologic Data System (AEDS) under Contract No. N01AA32007 for the Division of Epidemiology and Prevention Research, National Institute on Alcohol Abuse and Alcoholism (NIAAA). Dr. Rosalind A. Breslow serves as NIAAA Project Officer on the contract and oversaw the preparation of this report.

(Blank page)

## HIGHLIGHTS

This surveillance report on 1977–2006 apparent per capita alcohol consumption in the United States is the 22nd in a series of consumption reports produced annually by the National Institute on Alcohol Abuse and Alcoholism (NIAAA). Findings are based on alcoholic beverage sales data, either collected directly by the Alcohol Epidemiologic Data System (AEDS) from the States or provided by beverage industry sources. Population data provided by the U.S. Census Bureau are used as denominators to calculate per capita rates.

The following are highlights from the current report, which updates consumption trends through 2006:

- United States per capita consumption of ethanol from all alcoholic beverages combined in 2006 was 2.27 gallons, representing a 1.8 percent increase from 2.23 gallons in 2005. The increase is due to the increase in per capita consumption of wine (from 0.35 to 0.37 gallons ethanol), spirits (from 0.70 to 0.71 gallons ethanol), and beer (from 1.18 to 1.19 gallons ethanol).
- Between 2005 and 2006, changes in overall per capita consumption of ethanol included increases in 42 states, decreases in 6 states and the District of Columbia, and no change in 2 states.
- Analysis of overall per capita alcohol consumption by census region between 2005 and 2006 indicated increases in all of the four regions: the Northeast (1.8 percent), the West (2.1 percent), the Midwest (0.9 percent), and the South (2.3 percent).
- Healthy People 2010 has set the national objective for reducing per capita alcohol consumption to no more than 1.96 gallons ethanol. However, there has been an increasing trend in per capita consumption since 1999. To meet the 2010 objective, per capita alcohol consumption will need to decrease by 13.7 percent, or about 3.6 percent per year from 2007 through 2010.

---

## INTRODUCTION

This surveillance report on per capita consumption of alcohol in the United States is the 22nd in a series of reports that examine alcohol consumption trends on a national, State, and regional basis. Like previous reports on per capita alcohol consumption, it is intended to provide updated alcohol information for policymakers, health care providers, researchers, and others concerned about alcohol issues.

Data presented in this report are related to one of the national objectives set in Healthy People 2010 (U.S. Department of Health and Human Services 2000) regarding per capita alcohol consumption. This objective aims to reduce the national per capita alcohol consumption level to no more than 1.96 gallons ethanol by 2010 (Department of Health and Human Services 2008).

The current report updates 1977–2005 alcohol consumption trends (Lakins et al. 2007) with new data for 2006. Data are presented in three tables. The first table presents national data on trends in beer, wine, and spirits consumption, as well as on all alcoholic beverages combined. The second table presents data on alcohol consumption for individual States for 2006. States also are ranked in deciles according to total ethanol consumption. The third table presents data on consumption trends for each type of beverage and all beverages combined for the Northeast, Midwest, South, and West regions defined by the U.S. Census Bureau.

## DATA

### Alcohol Consumption Data

AEDS makes every effort to obtain alcoholic beverage sales data from all States and the District of Columbia because sales data more

accurately reflect actual consumption of alcoholic beverages than do production and shipments data from beverage industry sources. For 2006 AEDS received complete beverage sales and/or tax receipts reports from 30 States for beer, 29 States for wine, and 26 States for spirits.<sup>1</sup> For the remaining States and the District of Columbia, shipments data from beverage industry sources (Adams Beverage Group 2006a, b, c) were used for the numerator to calculate per capita consumption. Although sales and tax receipt data tend to provide slightly lower per capita estimates (about .01 to .02 points per capita), the mixed use of data from sales and shipments sources appears to have little effect on overall trends in per capita alcohol consumption (Campbell et al. 1994).

### Population Data

State population estimates for persons ages 14 and older were obtained from Internet releases by the U.S. Census Bureau (2008). These data are used as denominators to calculate the per capita consumption figures.

To make the trend data more precise, AEDS revises data published in previous reports when the Census Bureau makes major revisions to their population estimates. One such revision occurred in the report published in 2003 (Nephew et al, 2003). Beginning with that report, the 1990s population estimates used in the past were replaced with the reestimated intercensal population data that bridge the 1990 and 2000 censuses (U.S. Census Bureau 2002). Because the new population estimates were generally higher than the old estimates, this

---

<sup>1</sup> The following 37 States provided alcoholic beverage sales data for beer, wine, and/or, spirits for 2006: Alaska, Arizona, Colorado, Connecticut, Delaware, Florida, Hawaii, Idaho, Illinois, Indiana, Kansas, Kentucky, Louisiana, Maryland, Massachusetts, Michigan, Minnesota, Missouri, Montana, Nebraska, Nevada, New Jersey, New Mexico, New York, North Carolina, North Dakota, Ohio, Oklahoma, Oregon, Pennsylvania, South Dakota, Texas, Utah, Virginia, Washington, Wisconsin, Wyoming.

revision resulted in slight decreases in calculated per capita ethanol consumption for the 1990s (especially the later part of the decade). Although most of these changes are minor, one impact of the revision is the change to the baseline number cited by Healthy People 2010 (U.S. Department of Health and Human Services 2000) to set the national health objective for reducing per capita alcohol consumption. The baseline year was 1997, the latest data year available at the time when the document was prepared. The revised data changed the 1997 baseline number from 2.18 to 2.14 gallons ethanol per capita. Accordingly, the national health objective has been adjusted from 2.00 to 1.96 gallons ethanol per capita in 2010 (Department of Health and Human Services 2008).

## METHODS

### Conversion of Ethanol Content

AEDS uses an estimate of average ethanol content in the alcoholic beverages to convert the gallons of sold or shipped beer, wine, and spirits into gallons of ethanol (pure alcohol) before calculating per capita consumption estimates. The ethanol conversion coefficients (ECC, i.e., proportion of pure alcohol for each beverage type) are 0.045 for beer, 0.129 for wine, and 0.411 for spirits (Doernberg and Stinson 1985).

AEDS has considered changes in the alcoholic beverage market which may affect the ECCs used in the current report. For instance the introduction of “light” beer, “light” wines, and coolers (both wine and spirits) may have slightly lowered the average ethanol content in some alcoholic beverages. Kling (1991, 1989) suggests that there were decreases in the ethanol content of spirits during the 1980s. However, such decreases may be offset by the increase in sales of drinks with higher ethanol content, such as premium brand liquors, fortified wines, malt liquors, and locally produced beers and ales (microbrews). “Ice” beers and “dry” beers, for example, both have higher ethanol content than

either premium or light beers (M. Shanken Communications, Inc. 1994). Therefore, changes in the average net ethanol content across all beverages have probably been minimal and not large enough to alter the trends in overall per capita consumption.

Recent studies by Kerr and colleagues (2006a, 2006b) attempted to estimate national average and State-specific ECCs for beer, wine, and spirits in each year. Their method derived ECCs for each beverage type based on three components of data: (1) market shares for subcategories within the beverage type (e.g., table wine, wine coolers, etc. within wine); (2) market shares for leading brands in each subcategory; and (3) ethanol contents of these leading brands. Their findings suggest that in 2002, the national average ethanol content was 0.0467 for beer, 0.1145 for wine, and 0.3690 for spirits. Their State-specific estimates indicate that ECCs for all beverage types varied by State and over time. AEDS compared per capita consumption estimates derived by Kerr and colleagues with data presented in this surveillance report. Results revealed that cross-State correlations between the two data sets are higher than 0.99 for all three beverage types. Similar patterns were also observed in national trends between the two sets of estimates, although some differences in absolute values existed and fluctuated over time. Given the fact that Kerr and colleagues applied their ECCs to the same AEDS beverage volume data to derive their per capita consumption estimates, it was concluded that consumption trends are mainly driven by beverage volumes rather than changes in the ECC estimates. Nonetheless, AEDS is currently conducting a study to update the AEDS ECCs. The study adopts and expands the Kerr et al. approach to derive ECC estimates that can reliably and consistently account for changes in the average ethanol content level of alcoholic beverages. The results of this study will be reflected in the 2009 issue of this report.

## **Population Denominator**

AEDS uses a population of persons ages 14 and older to calculate per capita consumption rates. Although age 14 is below the minimum legal age for the purchase of alcoholic beverages throughout the United States, most self-report surveys indicate that many 14-year-olds drink alcoholic beverages. For example, data from the NIAAA 2001–2002 National Epidemiologic Survey on Alcohol and Related Conditions indicate that 12.2 percent of current drinkers ages 18 and older in the United States began drinking at age 15 or younger (AEDS 2004). Results from the Monitoring the Future survey in 2004 (Johnston et al. 2006) indicate that 33.9 percent of eighth graders (13- to 14-year-olds) reported past-year use of alcohol (i.e., beyond a few sips). Also, using data from the National Survey on Drug Use and Health in 2005, Newes-Adeyi and colleagues (2007) found the mean age of initiation of alcohol use among 12–20 year olds to be 14 years of age.

## **Limitations**

Individuals familiar with survey reports and other scientific literature often are accustomed to the presentation of significance tests, or confidence intervals, on any data comparisons or trends. However, because data presented in this report are based on total actual sales and/or shipments, no measures of statistical significance are provided. Nonetheless, it is important to note that these data are still only estimates and may be subject to reporting error.

In addition to ECCs, many factors may result in inaccuracies in estimates of per capita alcohol consumption. For instance, per capita consumption estimates in some States can be inflated by such factors as cross-border sales to buyers from neighboring States. Other factors include: variation in State reporting practices for sales of alcoholic beverages; time-delay between State taxation records and actual consumption; exclusion of alcohol contained in medications and foods; unrecorded legal home production; and illicit production, importation,

and sales. These factors are discussed in detail in the latest AEDS data reference manual (DRM) on per capita alcohol consumption (Nephew et al. 2004). The DRM can be ordered on NIAAA's Web site <http://www.niaaa.nih.gov>.

## Note

For data years 2003 to 2005, AEDS used taxation data from the State of Pennsylvania to calculate the volume of beer consumed. However, it has been brought to our attention by a researcher at the Beer Institute that an artifact in the taxation data caused AEDS to overestimate the level of beer consumption in Pennsylvania. Therefore, AEDS has reverted to using shipments data published by the Adams Beverage Group. This issue of the Apparent Per Capita Alcohol Consumption Surveillance Report contains revised estimates for beer as well as total consumption in Pennsylvania from 2003 to 2005. These changes have resulted in minor changes in the Northeast regional and national levels of consumption for the three years.

## REFERENCES

- Adams Beverage Group. *Adams Beer Handbook*, 2006. New York: Adams, 2007a.
- Adams Business Media. *Adams Liquor Handbook*, 2006. New York: Adams, 2007b.
- Adams Business Media. *Adams Wine Handbook*, 2006. New York: Adams, 2007c.
- Alcohol Epidemiologic Data System (AEDS). Unpublished data from the 2001–2002 National Epidemiologic Survey on Alcohol and Related Conditions, National Institute on Alcohol Abuse and Alcoholism, 2004.
- Campbell, K.E.; Clem, D.; and Williams, G.D. Technical report: 1986–91 per capita ethanol consumption trends using beverage industry shipments data compared to combined sales/tax receipt and shipments data. Working paper prepared by the Alcohol Epidemiologic Data System, NIAAA, Washington, DC, August 1994.
- Doernberg, D.; and Stinson, F.S. *U.S. Alcohol Epidemiologic Data Reference Manual, Volume 1: U.S. Apparent Consumption of Alcoholic Beverages Based on State Sales, Taxation, or Receipt Data*. Washington, DC: U.S. Government Printing Office, September 1985.
- Hyman, M.; Zimmerman, M.; Gurioli, C.; and Helrich, A. *Drinkers, Drinking and Alcohol-Related Mortality and Hospitalizations: A Statistical Compendium, 1980 Edition*. New Brunswick, NJ: Rutgers University, 1980.
- Jobson Publishing Corporation. *Jobson's Liquor Handbook 1992*. New York: Jobson, 1992.
- Johnston, L.D.; O'Malley, P.M.; Bachman, J.G.; and Schulenberg, J.E. *Monitoring the Future, National Results on Adolescent Drug Use: Overview of Key Findings, 2005*. (NIH Publication No. 06-5882). Bethesda, MD: National Institute on Drug Abuse, 2006.
- Kerr, W.C.; Greenfield, T.K.; Tujague, J.; Brown, S.E. The Alcohol Content of Wine Consumed in the US and Per Capita Consumption: New Estimates Reveal Different Trends. *Alcoholism: Clinical and Experimental Research* 30(3):516-522, 2006a.
- Kerr, W.C.; Greenfield, T.K.; and Tujague, J. Estimates of the mean alcohol concentration of the spirits, wine, and beer sold in the United States and per capita consumption: 1950 to 2002. *Alcoholism: Clinical and Experimental Research* 30(9): 1583-1591, 2006b.
- Kling, W. Errata: Measurement of ethanol consumed in distilled spirits. *Journal of Studies on Alcohol* 52:503–504, 1991.
- Kling, W. Measurement of ethanol consumed in distilled spirits. *Journal of Studies on Alcohol* 50:456–460, 1989.
- Lakins, N.E.; Williams, G.D.; and Yi, H. *Surveillance Report #78: Apparent Per Capita Alcohol Consumption: National, State, and Regional Trends, 1977–2004*. Rockville, MD: NIAAA, Division of Epidemiology and Prevention Research, Alcohol Epidemiologic Data System, August 2006.
- M. Shanken Communications, Inc. *The U.S. Beer Market: Impact Databank Review and Forecast, 1994 Edition*. New York: Shanken, 1994.
- Nephew, T.M.; Williams, G.D.; Yi, H.; Hoy, A.K.; Stinson, F.S.; and Dufour, M. *Surveillance Report #59: Apparent Per Capita Alcohol Consumption: National, State, and Regional Trends, 1977–2000*. Rockville, MD: NIAAA, Division of Biometry and Epidemiology, Alcohol Epidemiologic Data System, September 2003.
- Nephew, T.M.; Yi, H.; Williams, G.D.; Stinson, F.S.; and Dufour, M.C. *Alcohol Epidemiologic Data Reference Manual, Vol. 1, 4th Edition, U.S. Apparent Consumption of Alcoholic Beverages Based on State Sales, Taxation, or Receipt Data*. NIH Publication No. 04-5563. Bethesda, MD: National Institutes of Health, National Institute on Alcohol Abuse and Alcoholism, Alcohol Epidemiologic Data System, June, 2004.
- Newes-Adeyi, G.; Chen, C.M.; Williams, G.D.; and Faden, V.B. *Surveillance Report #81: Trends in Underage Drinking in the United States, 1991–2005*.

Rockville, MD: NIAAA, Division of Epidemiology and Prevention Research, Alcohol Epidemiologic Data System, October 2007.

U.S. Census Bureau, Population Division. *Estimates and Projections Area Documentation: State and County Total Population Estimates*, Washington, D.C.: U.S. Census Bureau, Internet release, December 2002.

U.S. Census Bureau, Population Division. *Estimates of the Resident Population by Single-Year of Age and Sex for the United States and States: July 1, 2007* (SC-EST2007-AGESEX\_RES). Washington, D.C.: U.S. Census Bureau, Internet release, January 4, 2008.

U.S. Department of Health and Human Services, National Center for Health Statistics. (2008). *Data2010: the Healthy People 2010 Database* (May, 2008 Edition) [Interactive database]. Available from National Center for Health Statistics website, <http://www.cdc.gov/nchs>.

U.S. Department of Health and Human Services. *Healthy People 2010. 2nd Ed. With Understanding and Improving Health and Objectives for Improving Health*. 2 vols. Washington, DC: U.S. Government Printing Office, November 2000.

## List of Figures

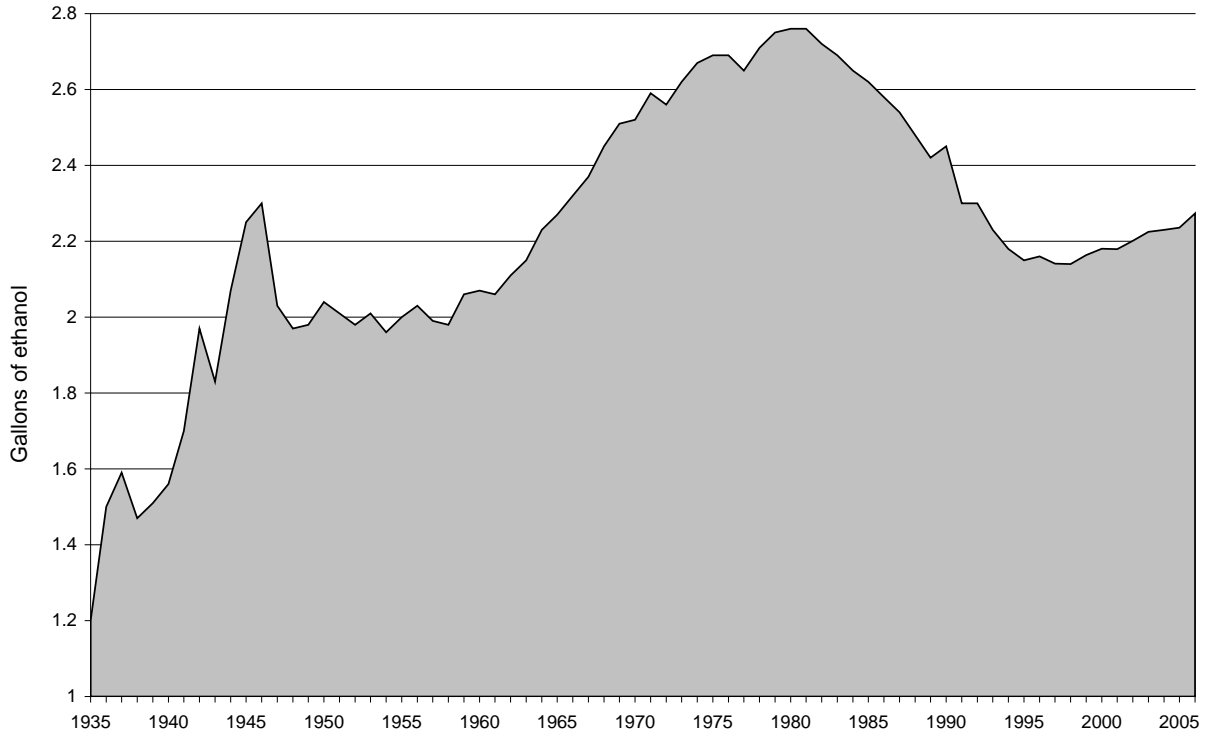
		Page
Figure 1	Total per capita ethanol consumption, United States, 1935–2006 .....	7
Figure 2	Per capita ethanol consumption by beverage type, United States, 1977–2006 .....	7
Figure 3	Percent change in per capita ethanol consumption, United States, 1977–2006 .....	8
Figure 4	Total per capita consumption in gallons of ethanol by State, United States, 2006 .....	9
Figure 5	Percentage change in total per capita ethanol consumption by State, United States, 2005–2006 .....	9
Figure 6	Total per capita ethanol consumption by region, United States, 1977–2006 .....	10
Figure 7	Per capita ethanol consumption from beer by region, United States, 1977–2006 .....	10
Figure 8	Per capita ethanol consumption from wine by region, United States, 1977–2006 .....	11
Figure 9	Per capita ethanol consumption from spirits by region, United States, 1977–2006 .....	11

## List of Tables

		Page
Table 1	Apparent per capita ethanol consumption, United States, 1850–2006 .....	12
Table 2	Apparent alcohol consumption for States, census regions, and the United States, 2006 .....	14
Table 3	Per capita ethanol consumption for States, census regions, and the United States, 1977–2006 .....	16



**Figure 1.** Total per capita ethanol consumption, United States, 1935–2006



**Figure 2.** Per capita ethanol consumption by beverage type, United States, 1977–2006.

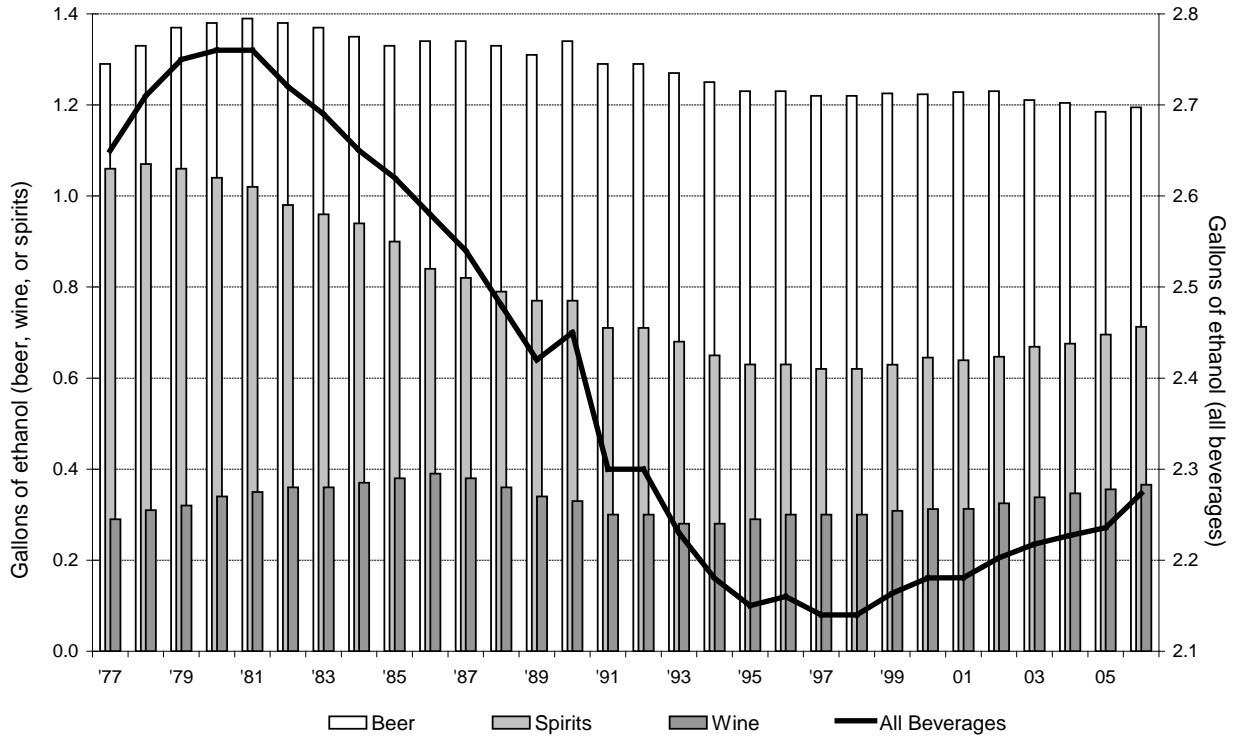
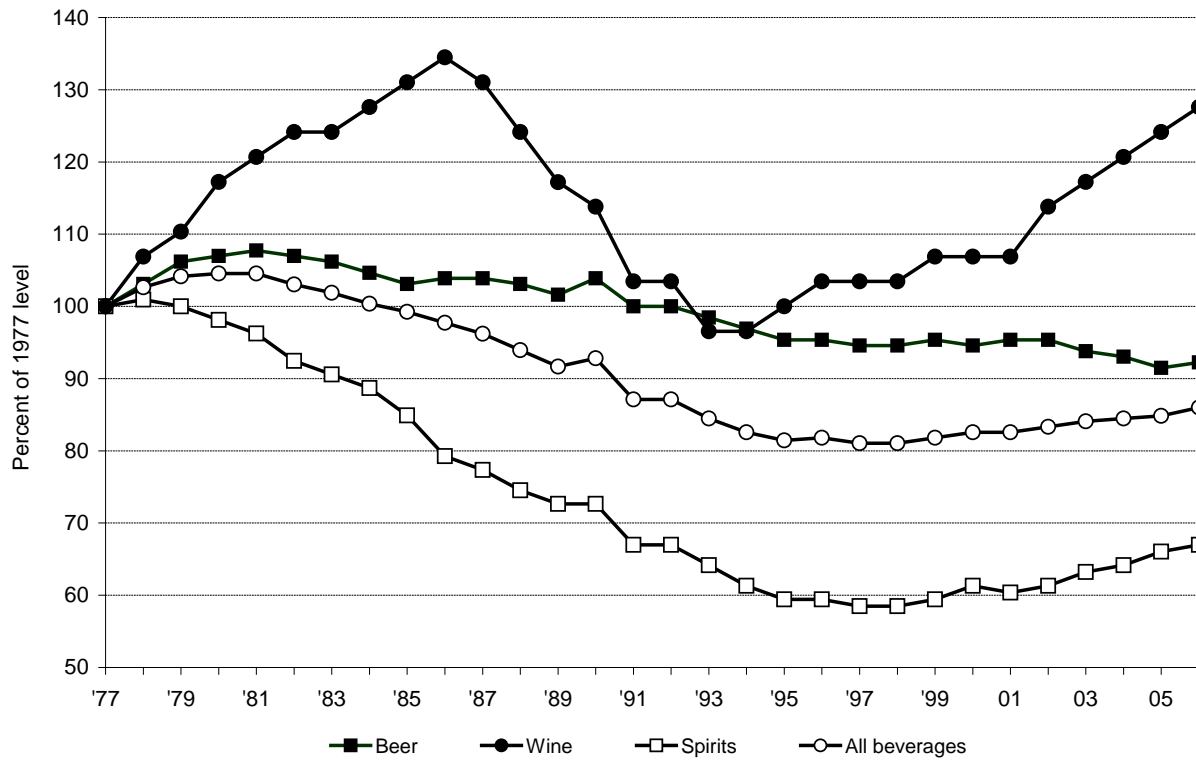
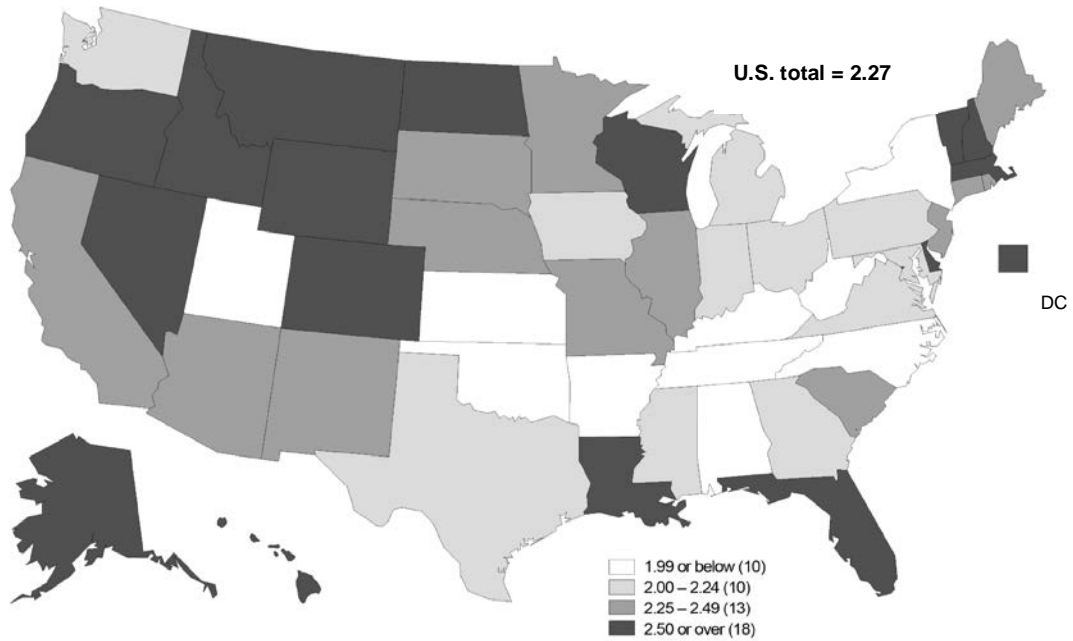


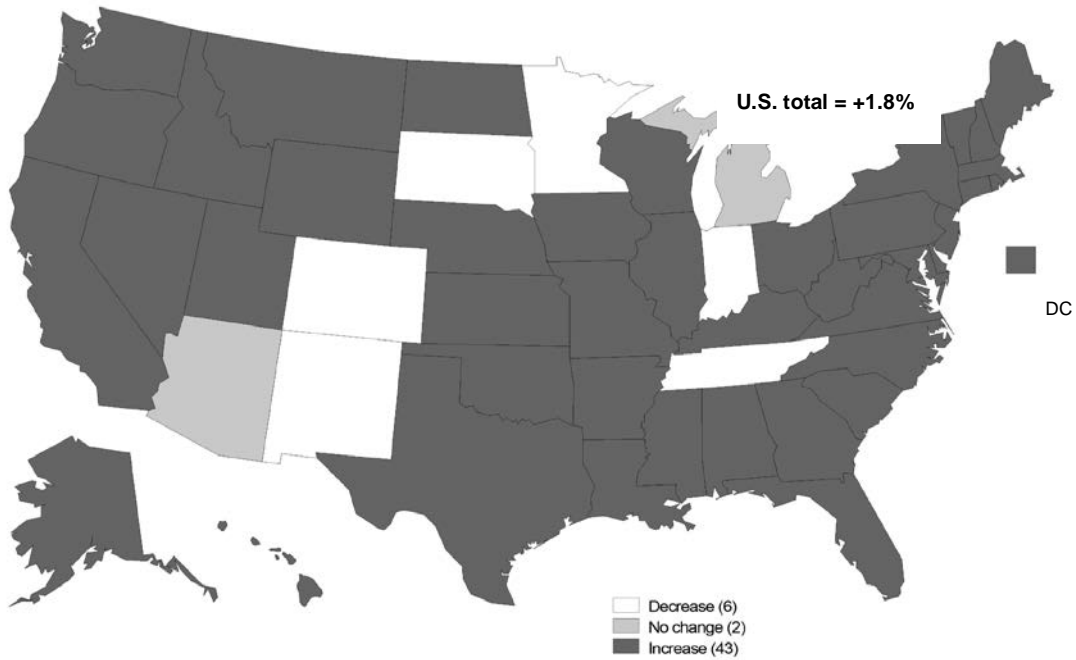
Figure 3. Percent change in per capita ethanol consumption, United States, 1977–2006.



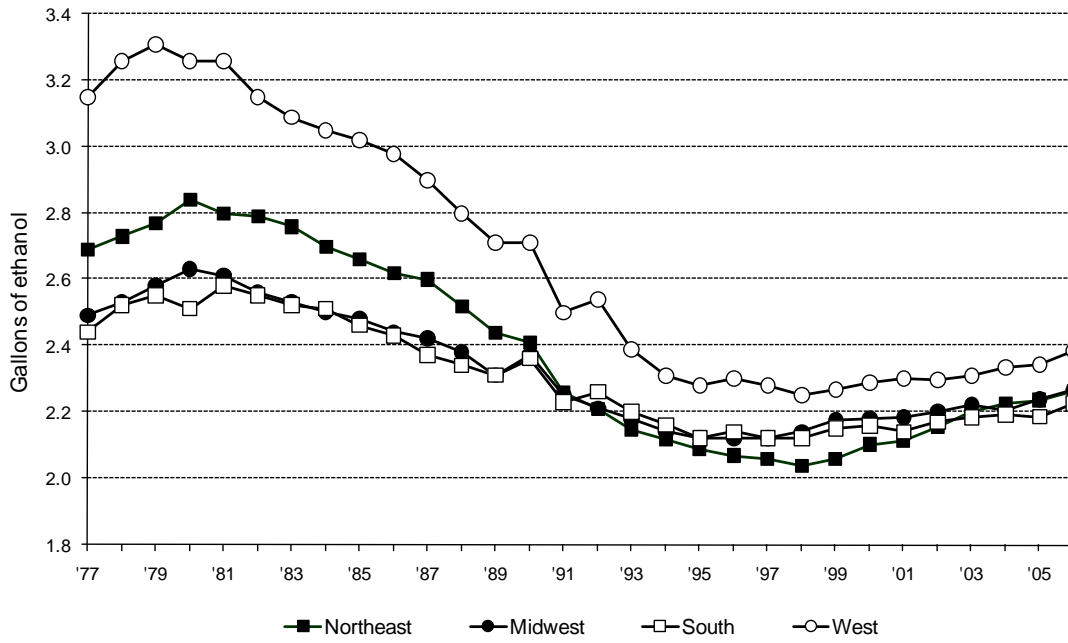
**Figure 4.** Total per capita consumption in gallons of ethanol by State, United States, 2006.



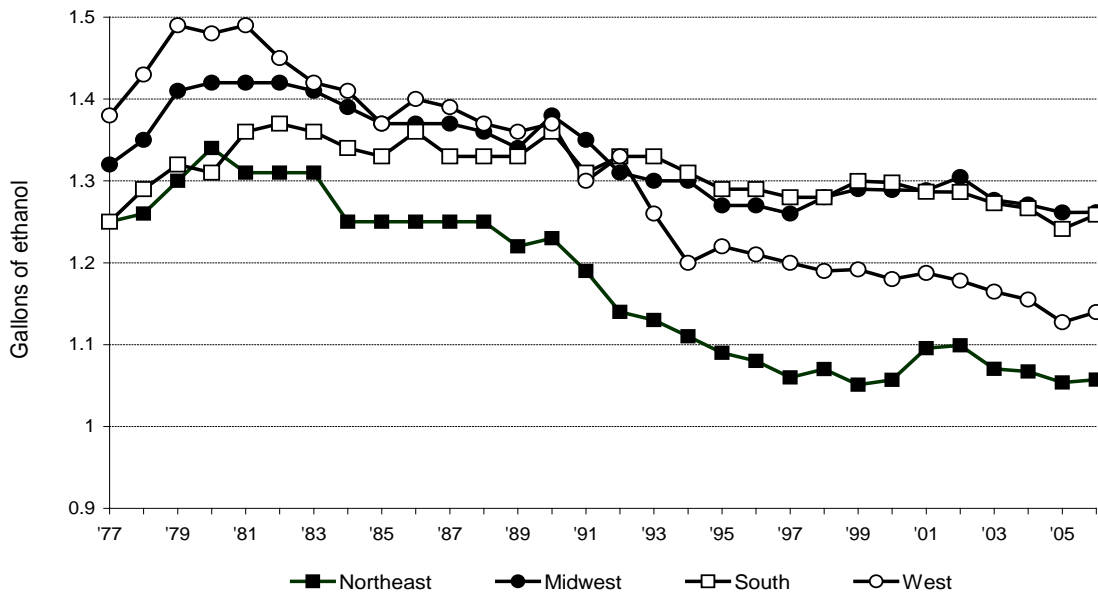
**Figure 5.** Percentage change in total per capita ethanol consumption by State, United States, 2005–2006.



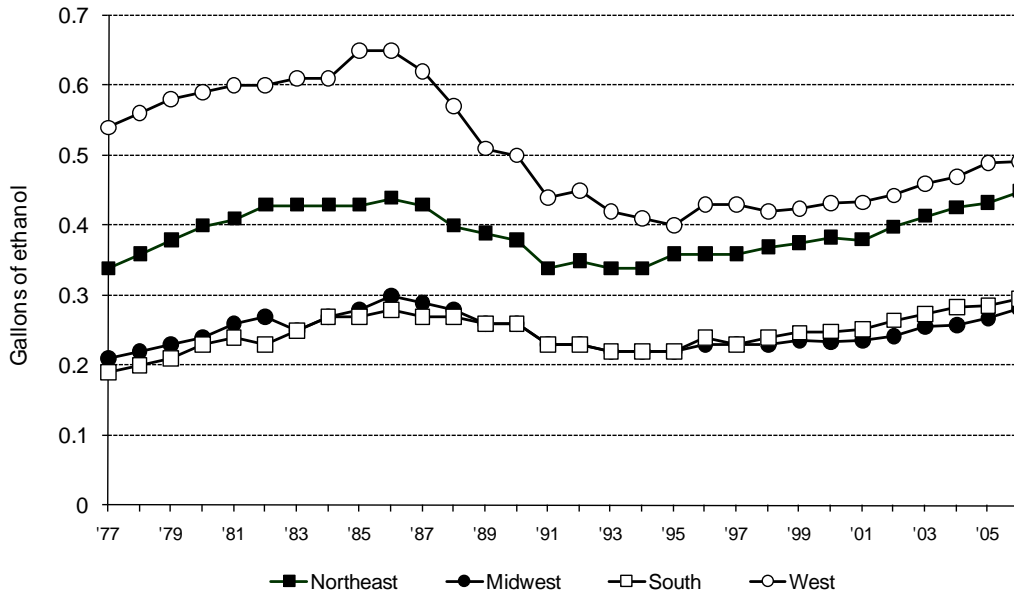
**Figure 6.** Total per capita ethanol consumption by region, United States, 1977–2006



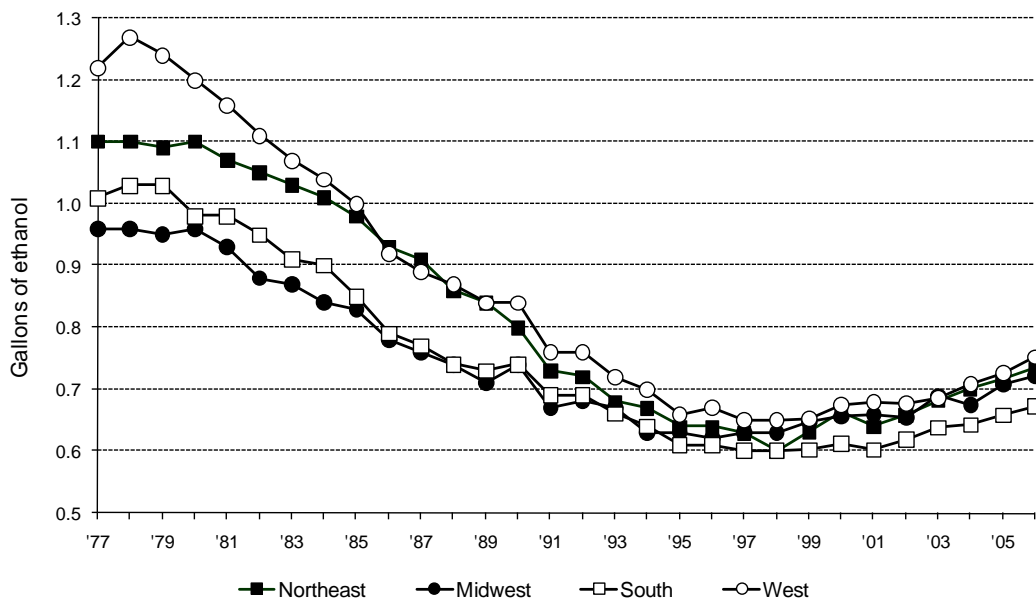
**Figure 7.** Per capita ethanol consumption from beer by region, United States, 1977–2006.



**Figure 8.** Per capita ethanol consumption from wine by region, United States, 1977–2006.



**Figure 9.** Per capita ethanol consumption from spirits by region, United States, 1977–2006.



**Table 1.** Apparent per capita ethanol consumption, United States, 1850–2006. [Gallons of ethanol, based on population age 15 and older prior to 1970 and on population age 14 and older thereafter]

Year	Beer	Wine	Spirits	All beverages
2006 .....	1.19	0.37	0.71	2.27
2005 .....	1.18	0.36	0.70	2.23
2004 .....	1.20	0.35	0.68	2.23
2003 .....	1.21	0.34	0.67	2.22
2002 .....	1.23	0.33	0.65	2.20
2001 .....	1.23	0.31	0.64	2.18
2000 .....	1.22	0.31	0.65	2.18
1999 .....	1.23	0.31	0.63	2.16
1998 .....	1.22	0.30	0.62	2.14
1997 .....	1.22	0.30	0.62	2.14
1996 .....	1.23	0.30	0.63	2.16
1995 .....	1.23	0.29	0.63	2.15
1994 .....	1.25	0.28	0.65	2.18
1993 .....	1.26	0.28	0.68	2.23
1992 .....	1.29	0.30	0.71	2.30
1991 .....	1.29	0.30	0.71	2.30
1990 .....	1.34	0.33	0.77	2.45
1989 .....	1.31	0.34	0.77	2.42
1988 .....	1.33	0.36	0.79	2.48
1987 .....	1.34	0.38	0.82	2.54
1986 .....	1.34	0.39	0.84	2.58
1985 .....	1.33	0.38	0.90	2.62
1984 .....	1.35	0.37	0.94	2.65
1983 .....	1.37	0.36	0.96	2.69
1982 .....	1.38	0.36	0.98	2.72
1981 .....	1.39	0.35	1.02	2.76
1980 .....	1.38	0.34	1.04	2.76
1979 .....	1.37	0.32	1.06	2.75
1978 .....	1.33	0.31	1.07	2.71
1977 .....	1.29	0.29	1.06	2.64
1976 .....	1.27	0.32	1.10	2.69
1975 .....	1.26	0.32	1.11	2.69
1974 .....	1.25	0.31	1.11	2.67
1973 .....	1.20	0.31	1.10	2.62
1972 .....	1.17	0.30	1.09	2.56
1971 .....	1.15	0.31	1.12	2.59
1970 .....	1.14	0.27	1.11	2.52
1969 .....	1.12	0.26	1.13	2.51
1968 .....	1.09	0.26	1.10	2.45
1967 .....	1.07	0.25	1.05	2.37
1966 .....	1.06	0.24	1.02	2.32
1965 .....	1.04	0.24	0.99	2.27
1964 .....	1.04	0.24	0.95	2.23
1963 .....	1.01	0.23	0.91	2.15
1962 .....	0.99	0.22	0.90	2.11
1961 .....	0.97	0.23	0.86	2.06
1960 .....	0.99	0.22	0.86	2.07
1959 .....	1.00	0.22	0.84	2.06
1958 .....	0.96	0.22	0.80	1.98
1957 .....	0.97	0.22	0.80	1.99
1956 .....	1.00	0.22	0.81	2.03

Numbers may not sum because of rounding.

**Table 1.** Apparent per capita ethanol consumption, United States, 1850–2006. [Gallons of ethanol, based on population age 15 and older prior to 1970 and on population age 14 and older thereafter] (Continued)

Year	Beer	Wine	Spirits	All beverages
1955 .....	1.01	0.22	0.77	2.00
1954 .....	1.01	0.21	0.74	1.96
1953 .....	1.04	0.20	0.77	2.01
1952 .....	1.04	0.21	0.73	1.98
1951 .....	1.03	0.20	0.78	2.01
1950 .....	1.04	0.23	0.77	2.04
1949 .....	1.06	0.22	0.70	1.98
1948 .....	1.07	0.20	0.70	1.97
1947 .....	1.11	0.16	0.76	2.03
1946 .....	1.07	0.24	0.99	2.30
1945 .....	1.17	0.20	0.88	2.25
1944 .....	1.13	0.18	0.76	2.07
1943 .....	1.00	0.17	0.66	1.83
1942 .....	0.90	0.22	0.85	1.97
1941 .....	0.81	0.18	0.71	1.70
1940 .....	0.73	0.16	0.67	1.56
1939 .....	0.75	0.14	0.62	1.51
1938 .....	0.75	0.13	0.59	1.47
1937 .....	0.82	0.13	0.64	1.59
1936 .....	0.79	0.12	0.59	1.50
1935 .....	0.68	0.09	0.43	1.20
1934 .....	0.61	0.07	0.29	0.97
(Prohibition)				
1916–1919 .....	1.08	0.12	0.76	1.96
1911–1915 .....	1.48	0.14	0.94	2.56
1906–1910 .....	1.47	0.17	0.96	2.60
1901–1905 .....	1.31	0.13	0.95	2.39
1896–1900 .....	1.19	0.10	0.77	2.06
1891–1895 .....	1.17	0.11	0.95	2.23
1881–1890 .....	0.90	0.14	0.95	1.99
1871–1880 .....	0.56	0.14	1.02	1.72
1870 .....	0.44	0.10	1.53	2.07
1860 .....	0.27	0.10	2.16	2.53
1850 .....	0.14	0.08	1.88	2.10

Numbers may not sum because of rounding.

Note: Data prior to 1977 are from: Hyman, M.; Zimmerman, M.; Gurioli, C.; and Helrich, A. *Drinkers, Drinking and Alcohol-Related Mortality and Hospitalizations: A Statistical Compendium, 1980 edition*. New Brunswick, NJ: Rutgers University, 1980.

**Table 2.** Apparent alcohol consumption for States, census regions, and the United States, 2006. [Volume and ethanol in thousands of gallons, per capita ethanol consumption in gallons, based on population age 14 and older]

State or other geographic area	Beer			Wine			Spirits			All beverages		
	Volume	Ethanol	Per capita	Volume	Ethanol	Per capita	Volume	Ethanol	Per capita	Ethanol	Per capita	U.S. decile
Alabama .....	101,025	4,546	1.22	6,091	786	0.21	4,960	2,039	0.55	7,370	1.97	9
Alaska .....	14,917	671	1.24	1,935	250	0.46	1,344	552	1.02	1,473	2.73	2
Arizona .....	142,756	6,424	1.31	14,194	1,831	0.37	9,271	3,810	0.78	12,065	2.47	5
Arkansas .....	53,843	2,423	1.07	2,910	375	0.17	3,270	1,344	0.59	4,142	1.82	10
California .....	675,608	30,402	1.05	121,560	15,681	0.54	49,526	20,355	0.70	66,439	2.29	6
Colorado .....	108,981	4,904	1.27	13,311	1,717	0.45	9,138	3,756	0.97	10,377	2.69	3
Connecticut .....	59,047	2,657	0.93	12,258	1,581	0.55	5,880	2,417	0.84	6,655	2.32	6
Delaware .....	22,070	993	1.43	3,215	415	0.60	2,167	891	1.28	2,299	3.30	1
Dist. of Columb. ....	15,030	676	1.36	3,657	472	0.95	1,907	784	1.58	1,932	3.89	1
Florida .....	442,518	19,913	1.33	55,595	7,172	0.48	33,505	13,770	0.92	40,855	2.73	2
Georgia .....	192,848	8,678	1.17	14,724	1,899	0.26	11,494	4,724	0.64	15,302	2.06	8
Hawaii .....	30,688	1,381	1.30	3,914	505	0.48	2,028	833	0.78	2,719	2.56	3
Idaho .....	29,240	1,316	1.14	6,606	852	0.74	1,829	752	0.65	2,920	2.53	4
Illinois .....	281,239	12,656	1.23	29,333	3,784	0.37	18,375	7,552	0.73	23,992	2.33	6
Indiana .....	123,749	5,569	1.10	9,847	1,270	0.25	8,162	3,355	0.66	10,193	2.00	8
Iowa .....	74,385	3,347	1.38	3,074	397	0.16	3,823	1,571	0.65	5,315	2.19	7
Kansas .....	56,433	2,539	1.14	3,144	406	0.18	3,308	1,360	0.61	4,305	1.94	9
Kentucky .....	79,340	3,570	1.04	4,536	585	0.17	5,178	2,128	0.62	6,284	1.83	10
Louisiana .....	122,400	5,508	1.61	6,740	869	0.25	6,650	2,733	0.80	9,110	2.66	3
Maine .....	30,938	1,392	1.26	3,615	466	0.42	2,118	870	0.79	2,729	2.47	4
Maryland .....	103,038	4,637	1.02	12,156	1,568	0.34	9,251	3,802	0.83	10,007	2.19	7
Massachusetts .....	130,122	5,855	1.10	25,085	3,236	0.61	10,947	4,499	0.84	13,590	2.55	3
Michigan .....	205,142	9,231	1.12	18,246	2,354	0.29	15,299	6,288	0.76	17,873	2.17	7
Minnesota .....	107,021	4,816	1.15	10,477	1,352	0.32	9,474	3,894	0.93	10,061	2.40	5
Mississippi .....	74,813	3,367	1.46	2,154	278	0.12	3,776	1,552	0.67	5,196	2.25	6
Missouri .....	142,009	6,390	1.34	10,465	1,350	0.28	8,736	3,590	0.76	11,331	2.38	5
Montana .....	27,293	1,228	1.57	2,112	272	0.35	1,578	649	0.83	2,149	2.74	2
Nebraska .....	45,088	2,029	1.43	2,366	305	0.21	2,465	1,013	0.71	3,347	2.35	6
Nevada .....	77,182	3,473	1.74	10,193	1,315	0.66	6,300	2,589	1.30	7,378	3.70	1
New Hampshire .....	41,639	1,874	1.73	6,073	783	0.72	4,647	1,910	1.76	4,567	4.21	1

Decile values (1 = highest) apply only to State-level data. Numbers may not sum because of rounding.



**Table 2.** Apparent alcohol consumption for States, census regions, and the United States, 2006. [Volume and ethanol in thousands of gallons, per capita ethanol consumption in gallons, based on population age 14 and older] (Continued)

State or other geographic area	Beer			Wine			Spirits			All beverages		
	Volume	Ethanol	Per capita	Volume	Ethanol	Per capita	Volume	Ethanol	Per capita	Ethanol	Per capita	U.S. decile
New Jersey.....	148,555	6,685	0.94	29,296	3,779	0.53	14,516	5,966	0.84	16,430	2.32	6
New Mexico....	48,024	2,161	1.38	3,707	478	0.31	2,646	1,087	0.70	3,727	2.39	5
New York.....	312,574	14,066	0.88	55,565	7,168	0.45	25,277	10,389	0.65	31,622	1.99	9
North Carolina.	183,372	8,252	1.15	15,192	1,960	0.27	9,570	3,933	0.55	14,145	1.97	9
North Dakota ..	17,903	806	1.52	851	110	0.21	1,304	536	1.01	1,451	2.74	2
Ohio .....	274,140	12,336	1.32	17,232	2,223	0.24	10,029	4,122	0.44	18,681	2.00	8
Oklahoma.....	50,090	2,254	0.78	3,751	484	0.17	3,990	1,640	0.57	4,378	1.51	10
Oregon .....	85,275	3,837	1.26	11,493	1,483	0.49	5,764	2,369	0.78	7,689	2.53	4
Pennsylvania ..	298,350	13,426	1.30	19,117	2,466	0.24	14,358	5,901	0.57	21,793	2.12	8
Rhode Island ..	22,275	1,002	1.13	3,604	465	0.53	1,847	759	0.86	2,226	2.52	4
South Carolina	114,345	5,146	1.46	6,594	851	0.24	6,576	2,703	0.77	8,699	2.46	5
South Dakota..	21,420	964	1.51	934	121	0.19	1,221	502	0.79	1,586	2.48	4
Tennessee.....	125,438	5,645	1.14	7,382	952	0.19	6,740	2,770	0.56	9,367	1.89	9
Texas .....	581,767	26,180	1.43	36,525	4,712	0.26	24,678	10,143	0.55	41,034	2.24	7
Utah .....	30,780	1,385	0.71	2,372	306	0.16	2,031	835	0.43	2,526	1.30	10
Vermont.....	15,728	708	1.35	2,350	303	0.58	874	359	0.69	1,370	2.62	3
Virginia .....	157,404	7,083	1.14	19,090	2,463	0.39	8,601	3,535	0.57	13,081	2.10	8
Washington.....	121,275	5,457	1.05	19,498	2,515	0.48	9,065	3,726	0.71	11,698	2.24	7
West Virginia ..	41,130	1,851	1.22	1,208	156	0.10	1,530	629	0.42	2,636	1.74	10
Wisconsin.....	157,950	7,108	1.56	11,222	1,448	0.32	12,129	4,985	1.09	13,540	2.96	1
Wyoming .....	13,673	615	1.47	748	96	0.23	1,070	440	1.05	1,152	2.74	2
<i>Regions</i>												
Northeast.....	1,059,228	47,665	1.06	156,962	20,248	0.45	80,464	33,071	0.73	100,984	2.24	
Midwest.....	1,506,479	67,792	1.26	117,191	15,118	0.28	94,324	38,767	0.72	121,676	2.26	
South.....	2,460,471	110,721	1.26	201,520	25,996	0.30	143,843	59,120	0.67	195,837	2.23	
West.....	1,405,692	63,256	1.14	211,643	27,302	0.49	101,588	41,753	0.75	132,311	2.38	
U.S. total.....	6,431,869	289,434	1.19	687,317	88,664	0.37	420,219	172,710	0.71	550,808	2.27	

Decile values (1 = highest) apply only to State-level data. Numbers may not sum because of rounding.

**Table 3.** Per capita ethanol consumption for States, census regions, and the United States, 1977-2006. [Gallons of ethanol, based on population age 14 and older]

State or other Geographic area	Per capita consumption				U.S. decile for all beverages
	Beer	Wine	Spirits	All beverages	
<b>Alabama</b>					
2006 .....	1.22	0.21	0.55	1.97	9
2005 .....	1.18	0.20	0.53	1.91	9
2004 .....	1.19	0.20	0.52	1.90	9
2003 .....	1.18	0.19	0.52	1.89	9
2002 .....	1.18	0.21	0.53	1.92	9
2001 .....	1.16	0.17	0.53	1.86	9
2000 .....	1.19	0.18	0.51	1.88	9
1999 .....	1.18	0.17	0.51	1.87	9
1998 .....	1.16	0.17	0.51	1.85	9
1997 .....	1.14	0.15	0.52	1.81	9
1996 .....	1.17	0.15	0.53	1.86	9
1995 .....	1.14	0.15	0.53	1.81	9
1994 .....	1.16	0.17	0.54	1.87	9
1993 .....	1.14	0.17	0.56	1.86	9
1992 .....	1.02	0.19	0.59	1.79	10
1991 .....	1.00	0.17	0.59	1.76	10
1990 .....	1.12	0.18	0.61	1.92	9
1989 .....	1.10	0.17	0.60	1.87	9
1988 .....	1.10	0.18	0.61	1.89	9
1987 .....	1.10	0.18	0.61	1.89	9
1986 .....	1.09	0.18	0.64	1.90	9
1985 .....	1.06	0.17	0.67	1.90	9
1984 .....	1.02	0.19	0.69	1.90	10
1983 .....	1.01	0.17	0.71	1.89	10
1982 .....	1.00	0.18	0.72	1.89	10
1981 .....	1.00	0.19	0.73	1.92	10
1980 .....	0.96	0.16	0.74	1.86	10
1979 .....	0.98	0.12	0.84	1.94	10
1978 .....	0.98	0.12	0.88	1.97	9
1977 .....	0.99	0.13	0.84	1.96	9
<b>Alaska</b>					
2006 .....	1.24	0.46	1.02	2.73	2
2005 .....	1.24	0.43	0.99	2.65	2
2004 .....	1.32	0.45	0.96	2.73	2
2003 .....	1.27	0.37	0.79	2.43	3
2002 .....	1.36	0.43	1.08	2.87	1
2001 .....	1.34	0.40	0.97	2.71	2
2000 .....	1.35	0.37	0.92	2.63	2
1999 .....	1.45	0.40	0.98	2.82	1
1998 .....	1.37	0.39	0.98	2.74	1
1997 .....	1.31	0.36	0.88	2.56	2
1996 .....	1.31	0.38	0.94	2.63	2
1995 .....	1.45	0.39	1.02	2.86	1
1994 .....	1.53	0.40	1.10	3.03	1
1993 .....	1.31	0.32	0.92	2.55	2
1992 .....	1.53	0.41	1.08	3.02	1
1991 .....	1.54	0.43	1.14	3.11	1
1990 .....	1.62	0.46	1.25	3.33	1
1989 .....	1.57	0.46	1.24	3.27	1
1988 .....	1.60	0.49	1.23	3.32	1
1987 .....	1.64	0.54	1.29	3.46	1

Decile values (1 = highest apply only to State-level data. Numbers may not sum because of rounding.

**Table 3.** Per capita ethanol consumption for States, census regions, and the United States, 1977-2006. [Gallons of ethanol, based on population age 14 and older] (Continued)

State or other Geographic area	Per capita consumption				U.S. decile for all beverages
	Beer	Wine	Spirits	All beverages	
1986 .....	1.68	0.56	1.27	3.51	1
1985 .....	1.68	0.58	1.53	3.78	1
1984 .....	1.73	0.58	1.56	3.86	1
1983 .....	1.76	0.61	1.70	4.06	1
1982 .....	1.75	0.56	1.74	4.05	1
1981 .....	1.71	0.57	1.82	4.10	1
1980 .....	1.55	0.50	1.70	3.76	1
1979 .....	1.50	0.47	1.65	3.62	1
1978 .....	1.39	0.45	1.68	3.52	2
1977 .....	1.19	0.42	1.70	3.31	2
Arizona					
2006 .....	1.31	0.37	0.78	2.47	5
2005 .....	1.33	0.39	0.74	2.47	3
2004 .....	1.39	0.33	0.70	2.43	4
2003 .....	1.41	0.37	0.71	2.48	3
2002 .....	1.46	0.33	0.69	2.49	3
2001 .....	1.47	0.33	0.70	2.50	3
2000 .....	1.48	0.31	0.71	2.50	3
1999 .....	1.47	0.34	0.69	2.51	2
1998 .....	1.44	0.32	0.68	2.44	2
1997 .....	1.45	0.31	0.68	2.44	2
1996 .....	1.52	0.33	0.73	2.58	2
1995 .....	1.47	0.29	0.68	2.44	3
1994 .....	1.52	0.29	0.70	2.50	2
1993 .....	1.58	0.27	0.76	2.62	2
1992 .....	1.58	0.31	0.80	2.69	2
1991 .....	1.58	0.35	0.78	2.71	2
1990 .....	1.59	0.37	0.80	2.77	3
1989 .....	1.68	0.36	0.85	2.89	2
1988 .....	1.64	0.42	0.88	2.94	2
1987 .....	1.67	0.46	0.86	2.99	2
1986 .....	1.77	0.46	0.91	3.14	2
1985 .....	1.67	0.46	1.00	3.12	2
1984 .....	1.57	0.45	1.06	3.08	3
1983 .....	1.62	0.44	1.00	3.06	3
1982 .....	1.74	0.40	0.99	3.13	3
1981 .....	1.78	0.42	1.01	3.22	3
1980 .....	1.69	0.36	0.98	3.03	4
1979 .....	1.86	0.39	1.17	3.42	2
1978 .....	1.77	0.37	1.10	3.25	2
1977 .....	1.70	0.34	1.05	3.10	3
Arkansas					
2006 .....	1.07	0.17	0.59	1.82	10
2005 .....	1.05	0.16	0.58	1.79	10
2004 .....	1.07	0.15	0.58	1.80	10
2003 .....	1.06	0.14	0.56	1.76	10
2002 .....	1.07	0.14	0.53	1.73	10
2001 .....	1.06	0.13	0.53	1.72	10
2000 .....	1.09	0.12	0.53	1.74	10
1999 .....	1.09	0.12	0.54	1.75	10
1998 .....	1.10	0.11	0.51	1.73	10
1997 .....	1.08	0.12	0.52	1.71	10
1996 .....	1.10	0.12	0.53	1.75	9
1995 .....	1.08	0.12	0.51	1.70	10
1994 .....	1.06	0.13	0.46	1.65	10
1993 .....	1.10	0.11	0.58	1.79	9

Decile values (1 = highest) apply only to State-level data. Numbers may not sum because of rounding.

**Table 3.** Per capita ethanol consumption for States, census regions, and the United States, 1977-2006. [Gallons of ethanol, based on population age 14 and older] (Continued)

State or other Geographic area	Per capita consumption				U.S. decile for all beverages
	Beer	Wine	Spirits	All beverages	
1992 .....	1.13	0.12	0.65	1.90	9
1991 .....	1.12	0.11	0.58	1.81	9
1990 .....	1.12	0.13	0.61	1.86	9
1989 .....	1.08	0.13	0.57	1.78	9
1988 .....	1.07	0.14	0.53	1.74	10
1987 .....	1.08	0.11	0.53	1.71	10
1986 .....	1.06	0.09	0.48	1.63	10
1985 .....	1.03	0.13	0.58	1.75	10
1984 .....	1.02	0.12	0.64	1.78	10
1983 .....	1.03	0.13	0.63	1.78	10
1982 .....	1.03	0.12	0.63	1.78	10
1981 .....	1.06	0.12	0.68	1.87	10
1980 .....	1.00	0.12	0.69	1.81	10
1979 .....	0.93	0.10	0.57	1.60	10
1978 .....	0.97	0.11	0.73	1.82	10
1977 .....	0.92	0.10	0.63	1.65	10
California					
2006 .....	1.05	0.54	0.70	2.29	6
2005 .....	1.02	0.53	0.68	2.23	6
2004 .....	1.06	0.51	0.67	2.24	6
2003 .....	1.06	0.50	0.65	2.22	6
2002 .....	1.07	0.49	0.63	2.20	6
2001 .....	1.08	0.48	0.64	2.20	6
2000 .....	1.07	0.48	0.64	2.19	6
1999 .....	1.10	0.46	0.62	2.18	6
1998 .....	1.10	0.45	0.61	2.17	6
1997 .....	1.12	0.50	0.62	2.24	5
1996 .....	1.11	0.49	0.64	2.24	5
1995 .....	1.14	0.45	0.64	2.23	4
1994 .....	1.09	0.47	0.68	2.24	5
1993 .....	1.17	0.48	0.69	2.35	4
1992 .....	1.28	0.51	0.75	2.54	3
1991 .....	1.22	0.49	0.75	2.46	4
1990 .....	1.32	0.59	0.87	2.78	2
1989 .....	1.31	0.61	0.87	2.79	2
1988 .....	1.34	0.68	0.89	2.90	2
1987 .....	1.36	0.74	0.93	3.03	2
1986 .....	1.36	0.79	0.96	3.11	2
1985 .....	1.32	0.78	1.02	3.12	2
1984 .....	1.38	0.74	1.07	3.19	2
1983 .....	1.37	0.75	1.11	3.23	2
1982 .....	1.37	0.72	1.14	3.23	3
1981 .....	1.43	0.72	1.21	3.36	2
1980 .....	1.42	0.71	1.25	3.38	2
1979 .....	1.42	0.70	1.28	3.40	2
1978 .....	1.36	0.68	1.32	3.36	2
1977 .....	1.31	0.67	1.28	3.25	2
Colorado					
2006 .....	1.27	0.45	0.97	2.69	3
2005 .....	1.30	0.41	0.99	2.70	2
2004 .....	1.30	0.43	0.95	2.68	2
2003 .....	1.34	0.40	0.87	2.60	2
2002 .....	1.35	0.39	0.90	2.64	2
2001 .....	1.42	0.41	0.96	2.79	1
2000 .....	1.35	0.37	0.89	2.60	2
1999 .....	1.33	0.37	0.75	2.45	3

Decile values (1 = highest apply only to State-level data. Numbers may not sum because of rounding.

**Table 3.** Per capita ethanol consumption for States, census regions, and the United States, 1977-2006. [Gallons of ethanol, based on population age 14 and older] (Continued)

State or other Geographic area	Per capita consumption				U.S. decile for all beverages
	Beer	Wine	Spirits	All beverages	
1998 .....	1.33	0.37	0.83	2.53	2
1997 .....	1.30	0.37	0.81	2.48	2
1996 .....	1.36	0.37	0.84	2.57	2
1995 .....	1.34	0.35	0.78	2.47	2
1994 .....	1.36	0.35	0.84	2.55	2
1993 .....	1.40	0.36	0.86	2.63	2
1992 .....	1.34	0.36	0.81	2.52	3
1991 .....	1.39	0.35	0.87	2.61	3
1990 .....	1.35	0.29	0.75	2.39	6
1989 .....	1.40	0.37	0.84	2.60	3
1988 .....	1.42	0.39	0.91	2.72	3
1987 .....	1.43	0.44	0.93	2.80	3
1986 .....	1.47	0.46	0.94	2.87	3
1985 .....	1.47	0.50	1.18	3.15	2
1984 .....	1.51	0.46	1.12	3.09	2
1983 .....	1.57	0.46	1.12	3.15	3
1982 .....	1.64	0.46	1.18	3.28	2
1981 .....	1.63	0.44	1.26	3.33	2
1980 .....	1.57	0.47	1.31	3.35	2
1979 .....	1.68	0.47	1.37	3.52	2
1978 .....	1.64	0.47	1.43	3.54	1
1977 .....	1.43	0.36	1.22	3.01	3
Connecticut					
2006 .....	0.93	0.55	0.84	2.32	6
2005 .....	0.90	0.54	0.79	2.23	6
2004 .....	0.92	0.53	0.79	2.24	6
2003 .....	0.93	0.52	0.77	2.22	6
2002 .....	0.95	0.50	0.74	2.20	6
2001 .....	0.95	0.50	0.74	2.19	6
2000 .....	0.94	0.49	0.74	2.18	6
1999 .....	0.94	0.49	0.75	2.18	6
1998 .....	0.96	0.48	0.74	2.18	6
1997 .....	0.95	0.48	0.74	2.17	6
1996 .....	0.94	0.46	0.72	2.13	6
1995 .....	0.97	0.49	0.77	2.22	5
1994 .....	0.99	0.43	0.78	2.20	6
1993 .....	0.96	0.44	0.80	2.20	6
1992 .....	1.01	0.45	0.83	2.30	6
1991 .....	1.03	0.43	0.84	2.29	6
1990 .....	1.09	0.45	0.92	2.46	6
1989 .....	1.09	0.47	0.98	2.54	4
1988 .....	1.14	0.51	1.07	2.71	3
1987 .....	1.15	0.52	1.12	2.79	3
1986 .....	1.13	0.51	1.15	2.79	3
1985 .....	1.14	0.50	1.20	2.84	3
1984 .....	1.10	0.50	1.20	2.80	4
1983 .....	1.10	0.49	1.23	2.82	4
1982 .....	1.04	0.49	1.20	2.73	6
1981 .....	1.05	0.44	1.18	2.67	6
1980 .....	1.06	0.43	1.21	2.70	6
1979 .....	1.13	0.40	1.20	2.72	5
1978 .....	1.07	0.38	1.20	2.65	6

Decile values (1 = highest apply only to State-level data. Numbers may not sum because of rounding.

**Table 3.** Per capita ethanol consumption for States, census regions, and the United States, 1977-2006. [Gallons of ethanol, based on population age 14 and older] (Continued)

State or other Geographic area	Per capita consumption				U.S. decile for all beverages
	Beer	Wine	Spirits	All beverages	
1977 .....	1.05	0.35	1.21	2.61	6
Delaware					
2006 .....	1.43	0.60	1.28	3.30	1
2005 .....	1.43	0.59	1.25	3.27	1
2004 .....	1.41	0.57	1.28	3.26	1
2003 .....	1.37	0.56	1.17	3.11	1
2002 .....	1.39	0.52	1.10	3.01	1
2001 .....	1.38	0.49	1.06	2.93	1
2000 .....	1.36	0.48	1.05	2.89	1
1999 .....	1.40	0.48	1.03	2.90	1
1998 .....	1.36	0.47	0.98	2.82	1
1997 .....	1.37	0.46	0.99	2.81	1
1996 .....	1.39	0.45	0.94	2.78	1
1995 .....	1.30	0.40	0.92	2.62	2
1994 .....	1.43	0.38	0.95	2.76	1
1993 .....	1.46	0.35	0.95	2.76	1
1992 .....	1.40	0.36	0.97	2.73	2
1991 .....	1.40	0.35	0.95	2.70	2
1990 .....	1.44	0.37	1.14	2.95	2
1989 .....	1.40	0.38	1.13	2.91	2
1988 .....	1.44	0.40	1.19	3.03	1
1987 .....	1.44	0.42	1.22	3.08	2
1986 .....	1.45	0.44	1.23	3.13	2
1985 .....	1.46	0.41	1.30	3.16	2
1984 .....	1.51	0.38	1.28	3.17	2
1983 .....	1.53	0.35	1.34	3.22	2
1982 .....	1.53	0.34	1.36	3.23	3
1981 .....	1.51	0.32	1.39	3.23	3
1980 .....	1.45	0.29	1.38	3.12	3
1979 .....	1.38	0.27	1.34	2.99	4
1978 .....	1.33	0.25	1.33	2.91	4
1977 .....	1.32	0.24	1.35	2.91	4
District of Columbia					
2006 .....	1.36	0.95	1.58	3.89	1
2005 .....	1.38	0.92	1.53	3.84	1
2004 .....	1.41	0.94	1.57	3.93	1
2003 .....	1.40	0.90	1.54	3.84	1
2002 .....	1.36	0.84	1.47	3.67	1
2001 .....	1.33	0.82	1.46	3.61	1
2000 .....	1.35	0.70	1.48	3.53	1
1999 .....	1.37	0.73	1.35	3.45	1
1998 .....	1.37	0.73	1.44	3.55	1
1997 .....	1.40	0.74	1.61	3.75	1
1996 .....	1.42	0.74	1.47	3.63	1
1995 .....	1.51	0.72	1.52	3.74	1
1994 .....	1.50	0.74	1.52	3.76	1
1993 .....	1.51	0.73	1.54	3.78	1
1992 .....	1.61	0.70	1.74	4.05	1
1991 .....	1.42	0.61	1.85	3.89	1
1990 .....	1.42	0.76	1.96	4.14	1
1989 .....	1.49	0.88	1.85	4.22	1
1988 .....	1.47	0.99	2.02	4.48	1

Decile values (1 = highest apply only to State-level data. Numbers may not sum because of rounding.

**Table 3.** Per capita ethanol consumption for States, census regions, and the United States, 1977-2006. [Gallons of ethanol, based on population age 14 and older] (Continued)

State or other Geographic area	Per capita consumption				U.S. decile for all beverages
	Beer	Wine	Spirits	All beverages	
1987 .....	1.48	1.00	2.37	4.85	1
1986 .....	1.52	1.04	2.19	4.75	1
1985 .....	1.49	1.03	2.42	4.94	1
1984 .....	1.56	1.11	2.68	5.34	1
1983 .....	1.55	1.08	2.79	5.41	1
1982 .....	1.48	1.00	2.91	5.39	1
1981 .....	1.50	1.06	2.92	5.49	1
1980 .....	1.49	0.99	2.94	5.42	1
1979 .....	1.48	0.99	3.03	5.49	1
1978 .....	1.43	0.94	3.14	5.51	1
1977 .....	1.39	0.89	3.26	5.53	1
Florida					
2006 .....	1.33	0.48	0.92	2.73	2
2005 .....	1.34	0.47	0.91	2.71	2
2004 .....	1.35	0.46	0.89	2.70	2
2003 .....	1.32	0.44	0.86	2.63	2
2002 .....	1.32	0.43	0.84	2.59	2
2001 .....	1.33	0.40	0.82	2.56	2
2000 .....	1.32	0.40	0.82	2.55	2
1999 .....	1.33	0.40	0.80	2.53	2
1998 .....	1.30	0.38	0.79	2.47	2
1997 .....	1.34	0.37	0.80	2.51	2
1996 .....	1.36	0.37	0.81	2.54	2
1995 .....	1.34	0.35	0.82	2.50	2
1994 .....	1.40	0.33	0.87	2.60	2
1993 .....	1.44	0.33	0.92	2.68	2
1992 .....	1.45	0.34	0.96	2.75	1
1991 .....	1.43	0.34	0.92	2.69	2
1990 .....	1.54	0.39	1.04	2.96	2
1989 .....	1.51	0.39	1.00	2.90	2
1988 .....	1.51	0.41	1.00	2.92	2
1987 .....	1.51	0.42	1.03	2.95	2
1986 .....	1.50	0.41	1.05	2.96	2
1985 .....	1.47	0.41	1.16	3.04	3
1984 .....	1.48	0.40	1.24	3.12	2
1983 .....	1.56	0.40	1.23	3.19	2
1982 .....	1.56	0.40	1.33	3.29	2
1981 .....	1.55	0.39	1.38	3.31	3
1980 .....	1.42	0.37	1.43	3.22	3
1979 .....	1.47	0.37	1.51	3.34	2
1978 .....	1.41	0.34	1.48	3.23	3
1977 .....	1.33	0.33	1.47	3.13	2
Georgia					
2006 .....	1.17	0.26	0.64	2.06	8
2005 .....	1.13	0.26	0.63	2.01	8
2004 .....	1.17	0.26	0.63	2.06	8
2003 .....	1.19	0.26	0.66	2.11	7
2002 .....	1.20	0.26	0.65	2.12	7
2001 .....	1.19	0.26	0.65	2.10	7
2000 .....	1.22	0.26	0.69	2.17	7
1999 .....	1.23	0.27	0.69	2.20	6
1998 .....	1.21	0.24	0.70	2.14	7

Decile values (1 = highest apply only to State-level data. Numbers may not sum because of rounding.

**Table 3.** Per capita ethanol consumption for States, census regions, and the United States, 1977-2006. [Gallons of ethanol, based on population age 14 and older] (Continued)

State or other Geographic area	Per capita consumption				U.S. decile for all beverages
	Beer	Wine	Spirits	All beverages	
1997 .....	1.19	0.25	0.70	2.14	6
1996 .....	1.22	0.24	0.70	2.16	6
1995 .....	1.20	0.22	0.71	2.13	6
1994 .....	1.17	0.20	0.77	2.14	7
1993 .....	1.23	0.20	0.77	2.20	6
1992 .....	1.22	0.21	0.79	2.23	7
1991 .....	1.16	0.22	0.78	2.17	7
1990 .....	1.22	0.23	0.86	2.31	7
1989 .....	1.18	0.24	0.94	2.37	6
1988 .....	1.22	0.26	0.92	2.40	6
1987 .....	1.22	0.27	1.00	2.49	6
1986 .....	1.22	0.27	0.95	2.43	6
1985 .....	1.17	0.25	1.01	2.43	7
1984 .....	1.18	0.23	1.06	2.48	7
1983 .....	1.14	0.22	1.05	2.42	7
1982 .....	1.12	0.21	1.04	2.37	8
1981 .....	1.10	0.18	1.09	2.38	8
1980 .....	1.07	0.19	1.09	2.35	8
1979 .....	1.17	0.19	1.22	2.58	7
1978 .....	1.14	0.19	1.26	2.59	7
1977 .....	1.08	0.16	1.23	2.47	7
Hawaii					
2006 .....	1.30	0.48	0.78	2.56	3
2005 .....	1.32	0.46	0.74	2.52	3
2004 .....	1.39	0.49	0.68	2.56	2
2003 .....	1.30	0.42	0.67	2.39	4
2002 .....	1.27	0.39	0.62	2.28	5
2001 .....	1.30	0.38	0.60	2.28	5
2000 .....	1.33	0.39	0.60	2.33	4
1999 .....	1.31	0.39	0.56	2.26	5
1998 .....	1.32	0.37	0.54	2.22	5
1997 .....	1.37	0.37	0.56	2.30	4
1996 .....	1.40	0.36	0.58	2.34	4
1995 .....	1.41	0.34	0.57	2.32	4
1994 .....	1.46	0.38	0.62	2.47	3
1993 .....	1.49	0.37	0.65	2.51	3
1992 .....	1.55	0.39	0.69	2.63	2
1991 .....	1.57	0.40	0.70	2.67	2
1990 .....	1.64	0.40	0.79	2.84	2
1989 .....	1.54	0.43	0.79	2.76	3
1988 .....	1.62	0.45	0.79	2.86	3
1987 .....	1.57	0.40	0.76	2.73	4
1986 .....	1.60	0.44	0.85	2.88	3
1985 .....	1.59	0.41	0.88	2.88	3
1984 .....	1.65	0.41	0.91	2.97	3
1983 .....	1.87	0.44	1.12	3.43	1
1982 .....	1.80	0.48	1.14	3.42	1
1981 .....	1.74	0.44	1.16	3.34	2
1980 .....	1.65	0.46	1.21	3.31	2
1979 .....	1.60	0.44	1.28	3.32	3
1978 .....	1.38	0.46	1.30	3.15	3
1977 .....	1.61	0.36	1.26	3.23	2

Decile values (1 = highest apply only to State-level data. Numbers may not sum because of rounding.



**Table 3.** Per capita ethanol consumption for States, census regions, and the United States, 1977-2006. [Gallons of ethanol, based on population age 14 and older] (Continued)

State or other Geographic area	Per capita consumption				U.S. decile for all beverages
	Beer	Wine	Spirits	All beverages	
<b>Idaho</b>					
2006 .....	1.14	0.74	0.65	2.53	4
2005 .....	1.10	0.73	0.61	2.44	4
2004 .....	1.12	0.71	0.57	2.40	5
2003 .....	1.14	0.64	0.54	2.33	5
2002 .....	1.16	0.64	0.53	2.32	5
2001 .....	1.14	0.63	0.53	2.30	5
2000 .....	1.16	0.65	0.51	2.32	4
1999 .....	1.17	0.68	0.52	2.36	4
1998 .....	1.15	0.59	0.51	2.25	4
1997 .....	1.14	0.36	0.50	2.00	7
1996 .....	1.18	0.30	0.51	1.98	7
1995 .....	1.15	0.30	0.53	1.98	7
1994 .....	1.24	0.35	0.53	2.12	7
1993 .....	1.26	0.29	0.55	2.11	7
1992 .....	1.32	0.31	0.57	2.20	7
1991 .....	1.31	0.32	0.56	2.19	7
1990 .....	1.36	0.33	0.58	2.27	7
1989 .....	1.23	0.30	0.56	2.09	8
1988 .....	1.25	0.36	0.58	2.18	7
1987 .....	1.31	0.38	0.58	2.26	7
1986 .....	1.34	0.38	0.61	2.33	7
1985 .....	1.35	0.36	0.71	2.42	7
1984 .....	1.40	0.31	0.72	2.43	7
1983 .....	1.44	0.30	0.76	2.51	7
1982 .....	1.47	0.31	0.81	2.58	7
1981 .....	1.54	0.33	0.83	2.70	6
1980 .....	1.53	0.30	0.77	2.60	7
1979 .....	1.55	0.27	0.84	2.65	6
1978 .....	1.50	0.26	0.80	2.56	7
1977 .....	1.50	0.22	0.79	2.52	7
<b>Illinois</b>					
2006 .....	1.23	0.37	0.73	2.33	6
2005 .....	1.22	0.34	0.70	2.26	6
2004 .....	1.22	0.31	0.67	2.21	6
2003 .....	1.25	0.35	0.74	2.34	5
2002 .....	1.27	0.33	0.65	2.25	5
2001 .....	1.27	0.32	0.68	2.27	5
2000 .....	1.28	0.32	0.63	2.24	6
1999 .....	1.29	0.33	0.66	2.27	5
1998 .....	1.28	0.34	0.64	2.25	4
1997 .....	1.26	0.35	0.65	2.26	5
1996 .....	1.27	0.35	0.68	2.30	4
1995 .....	1.30	0.33	0.66	2.29	4
1994 .....	1.32	0.34	0.69	2.35	4
1993 .....	1.32	0.34	0.72	2.38	4
1992 .....	1.34	0.35	0.74	2.43	4
1991 .....	1.38	0.34	0.76	2.48	4
1990 .....	1.43	0.36	0.82	2.62	4
1989 .....	1.38	0.35	0.82	2.56	4
1988 .....	1.42	0.37	0.85	2.64	4
1987 .....	1.41	0.39	0.87	2.66	4

Decile values (1 = highest apply only to State-level data. Numbers may not sum because of rounding.

**Table 3.** Per capita ethanol consumption for States, census regions, and the United States, 1977-2006. [Gallons of ethanol, based on population age 14 and older] (Continued)

State or other Geographic area	Per capita consumption				U.S. decile for all beverages
	Beer	Wine	Spirits	All beverages	
1986 .....	1.40	0.39	0.90	2.68	4
1985 .....	1.38	0.37	0.98	2.72	5
1984 .....	1.40	0.37	1.01	2.77	5
1983 .....	1.42	0.35	1.03	2.80	5
1982 .....	1.41	0.35	1.06	2.83	5
1981 .....	1.43	0.35	1.12	2.91	5
1980 .....	1.43	0.33	1.24	3.00	4
1979 .....	1.45	0.33	1.17	2.94	4
1978 .....	1.38	0.31	1.19	2.88	4
1977 .....	1.35	0.30	1.22	2.87	4
Indiana					
2006 .....	1.10	0.25	0.66	2.00	8
2005 .....	1.11	0.22	0.68	2.01	8
2004 .....	1.14	0.22	0.66	2.02	8
2003 .....	1.11	0.21	0.64	1.96	9
2002 .....	1.13	0.20	0.60	1.93	9
2001 .....	1.15	0.20	0.62	1.97	9
2000 .....	1.16	0.21	0.61	1.98	8
1999 .....	1.16	0.19	0.59	1.94	8
1998 .....	1.14	0.19	0.58	1.91	8
1997 .....	1.12	0.19	0.59	1.90	8
1996 .....	1.13	0.19	0.57	1.89	8
1995 .....	1.12	0.21	0.58	1.91	8
1994 .....	1.15	0.20	0.59	1.94	8
1993 .....	1.15	0.19	0.64	1.98	8
1992 .....	1.16	0.20	0.58	1.95	9
1991 .....	1.22	0.19	0.60	2.00	9
1990 .....	1.26	0.20	0.63	2.09	8
1989 .....	1.21	0.19	0.63	2.04	8
1988 .....	1.23	0.21	0.66	2.10	8
1987 .....	1.24	0.22	0.67	2.13	8
1986 .....	1.25	0.23	0.67	2.14	8
1985 .....	1.25	0.22	0.72	2.19	8
1984 .....	1.26	0.21	0.72	2.19	8
1983 .....	1.27	0.19	0.73	2.19	8
1982 .....	1.29	0.18	0.76	2.23	8
1981 .....	1.29	0.18	0.78	2.25	8
1980 .....	1.26	0.17	0.77	2.21	8
1979 .....	1.23	0.15	0.79	2.18	9
1978 .....	1.19	0.16	0.79	2.14	8
1977 .....	1.14	0.14	0.77	2.05	9
Iowa					
2006 .....	1.38	0.16	0.65	2.19	7
2005 .....	1.37	0.16	0.60	2.13	7
2004 .....	1.37	0.16	0.57	2.09	8
2003 .....	1.37	0.15	0.53	2.05	8
2002 .....	1.37	0.14	0.51	2.02	8
2001 .....	1.36	0.13	0.50	1.98	8
2000 .....	1.35	0.13	0.50	1.98	8
1999 .....	1.34	0.13	0.48	1.95	8
1998 .....	1.31	0.12	0.46	1.90	8
1997 .....	1.28	0.12	0.45	1.85	9

Decile values (1 = highest) apply only to State-level data. Numbers may not sum because of rounding.

**Table 3.** Per capita ethanol consumption for States, census regions, and the United States, 1977-2006. [Gallons of ethanol, based on population age 14 and older] (Continued)

State or other Geographic area	Per capita consumption				U.S. decile for all beverages
	Beer	Wine	Spirits	All beverages	
1996 .....	1.28	0.12	0.45	1.85	9
1995 .....	1.26	0.11	0.44	1.80	9
1994 .....	1.30	0.10	0.44	1.84	9
1993 .....	1.28	0.11	0.48	1.87	9
1992 .....	1.31	0.13	0.46	1.90	9
1991 .....	1.32	0.16	0.52	2.01	8
1990 .....	1.34	0.18	0.54	2.06	9
1989 .....	1.26	0.18	0.50	1.94	9
1988 .....	1.28	0.20	0.52	1.99	9
1987 .....	1.30	0.21	0.57	2.08	9
1986 .....	1.32	0.19	0.53	2.04	9
1985 .....	1.31	0.14	0.57	2.02	9
1984 .....	1.36	0.12	0.61	2.09	9
1983 .....	1.38	0.13	0.64	2.15	8
1982 .....	1.39	0.13	0.65	2.17	9
1981 .....	1.44	0.13	0.69	2.27	8
1980 .....	1.41	0.13	0.71	2.25	8
1979 .....	1.40	0.11	0.71	2.22	8
1978 .....	1.38	0.11	0.74	2.22	8
1977 .....	1.33	0.10	0.74	2.17	8
Kansas					
2006 .....	1.14	0.18	0.61	1.94	9
2005 .....	1.14	0.18	0.57	1.88	9
2004 .....	1.13	0.16	0.56	1.85	9
2003 .....	1.15	0.17	0.56	1.88	10
2002 .....	1.19	0.15	0.54	1.88	9
2001 .....	1.12	0.15	0.53	1.79	9
2000 .....	1.15	0.15	0.52	1.82	9
1999 .....	1.14	0.16	0.54	1.84	9
1998 .....	1.09	0.15	0.54	1.79	9
1997 .....	1.09	0.14	0.48	1.71	10
1996 .....	1.05	0.14	0.49	1.69	10
1995 .....	1.08	0.15	0.50	1.72	9
1994 .....	1.12	0.13	0.48	1.73	10
1993 .....	1.09	0.14	0.52	1.75	10
1992 .....	1.09	0.14	0.55	1.78	10
1991 .....	1.15	0.14	0.57	1.85	9
1990 .....	1.13	0.13	0.53	1.79	10
1989 .....	1.10	0.13	0.54	1.77	10
1988 .....	1.11	0.21	0.56	1.88	9
1987 .....	1.12	0.16	0.56	1.84	9
1986 .....	1.12	0.17	0.59	1.88	9
1985 .....	1.17	0.15	0.64	1.96	9
1984 .....	1.18	0.14	0.63	1.95	9
1983 .....	1.20	0.13	0.64	1.96	9
1982 .....	1.22	0.13	0.67	2.02	9
1981 .....	1.23	0.12	0.70	2.05	9
1980 .....	1.23	0.11	0.62	1.96	9
1979 .....	1.17	0.11	0.73	2.01	9
1978 .....	1.14	0.12	0.64	1.89	10
1977 .....	1.13	0.10	0.65	1.88	10

Decile values (1 = highest) apply only to State-level data. Numbers may not sum because of rounding.

**Table 3.** Per capita ethanol consumption for States, census regions, and the United States, 1977-2006. [Gallons of ethanol, based on population age 14 and older] (Continued)

State or other Geographic area	Per capita consumption				U.S. decile for all beverages
	Beer	Wine	Spirits	All beverages	
<b>Kentucky</b>					
2006 .....	1.04	0.17	0.62	1.83	10
2005 .....	1.05	0.14	0.61	1.80	10
2004 .....	1.07	0.17	0.57	1.81	10
2003 .....	1.03	0.15	0.56	1.74	10
2002 .....	1.08	0.14	0.54	1.76	10
2001 .....	1.04	0.12	0.46	1.63	10
2000 .....	1.07	0.14	0.54	1.74	10
1999 .....	1.07	0.13	0.54	1.74	10
1998 .....	1.07	0.13	0.53	1.72	10
1997 .....	1.06	0.13	0.53	1.72	9
1996 .....	1.05	0.13	0.54	1.72	10
1995 .....	1.05	0.12	0.54	1.71	10
1994 .....	1.08	0.11	0.55	1.73	10
1993 .....	1.08	0.10	0.55	1.73	10
1992 .....	1.04	0.11	0.56	1.71	10
1991 .....	1.11	0.11	0.56	1.78	10
1990 .....	1.12	0.11	0.60	1.83	10
1989 .....	1.08	0.12	0.56	1.76	10
1988 .....	1.08	0.12	0.59	1.79	10
1987 .....	1.03	0.14	0.59	1.76	10
1986 .....	1.09	0.13	0.62	1.84	10
1985 .....	1.07	0.13	0.66	1.86	10
1984 .....	1.05	0.12	0.68	1.85	10
1983 .....	1.13	0.12	0.69	1.94	9
1982 .....	1.14	0.12	0.73	1.99	9
1981 .....	1.13	0.11	0.75	1.99	9
1980 .....	1.08	0.10	0.74	1.91	10
1979 .....	1.10	0.09	0.77	1.97	10
1978 .....	1.07	0.09	0.77	1.93	10
1977 .....	1.19	0.09	0.75	2.03	9
<b>Louisiana</b>					
2006 .....	1.61	0.25	0.80	2.66	3
2005 .....	1.47	0.24	0.72	2.43	5
2004 .....	1.39	0.26	0.73	2.38	5
2003 .....	1.42	0.25	0.73	2.39	4
2002 .....	1.33	0.24	0.71	2.27	5
2001 .....	1.49	0.23	0.69	2.41	3
2000 .....	1.50	0.22	0.70	2.43	3
1999 .....	1.54	0.24	0.69	2.46	2
1998 .....	1.50	0.23	0.70	2.43	3
1997 .....	1.50	0.23	0.71	2.44	2
1996 .....	1.50	0.22	0.72	2.44	2
1995 .....	1.55	0.21	0.73	2.50	2
1994 .....	1.45	0.21	0.73	2.39	3
1993 .....	1.53	0.21	0.72	2.47	3
1992 .....	1.55	0.22	0.74	2.51	3
1991 .....	1.52	0.21	0.73	2.46	4
1990 .....	1.53	0.23	0.78	2.54	5
1989 .....	1.43	0.23	0.72	2.38	6
1988 .....	1.44	0.24	0.69	2.37	7
1987 .....	1.36	0.24	0.75	2.34	7

Decile values (1 = highest apply only to State-level data. Numbers may not sum because of rounding.

**Table 3.** Per capita ethanol consumption for States, census regions, and the United States, 1977-2006. [Gallons of ethanol, based on population age 14 and older] (Continued)

State or other Geographic area	Per capita consumption				U.S. decile for all beverages
	Beer	Wine	Spirits	All beverages	
1986 .....	1.39	0.26	0.78	2.42	7
1985 .....	1.35	0.27	0.86	2.49	6
1984 .....	1.40	0.29	0.94	2.63	6
1983 .....	1.43	0.30	1.02	2.75	5
1982 .....	1.49	0.30	1.00	2.78	5
1981 .....	1.48	0.27	1.02	2.77	6
1980 .....	1.41	0.27	1.04	2.71	6
1979 .....	1.36	0.26	1.08	2.70	6
1978 .....	1.35	0.25	1.07	2.67	6
1977 .....	1.30	0.25	1.03	2.57	6
Maine					
2006 .....	1.26	0.42	0.79	2.47	4
2005 .....	1.24	0.41	0.77	2.42	5
2004 .....	1.24	0.41	0.76	2.41	4
2003 .....	1.24	0.39	0.73	2.36	5
2002 .....	1.23	0.39	0.69	2.31	5
2001 .....	1.20	0.37	0.69	2.26	5
2000 .....	1.17	0.39	0.73	2.29	5
1999 .....	1.16	0.37	0.73	2.26	5
1998 .....	1.14	0.34	0.68	2.16	6
1997 .....	1.15	0.33	0.71	2.19	5
1996 .....	1.17	0.33	0.71	2.22	5
1995 .....	1.17	0.29	0.72	2.19	6
1994 .....	1.13	0.27	0.77	2.17	6
1993 .....	1.15	0.29	0.79	2.22	6
1992 .....	1.16	0.29	0.78	2.23	6
1991 .....	1.18	0.30	0.77	2.25	6
1990 .....	1.21	0.31	0.82	2.34	6
1989 .....	1.25	0.34	0.85	2.44	5
1988 .....	1.28	0.36	0.91	2.54	5
1987 .....	1.26	0.38	0.91	2.55	5
1986 .....	1.28	0.36	0.91	2.56	5
1985 .....	1.29	0.33	0.94	2.56	6
1984 .....	1.25	0.31	1.01	2.57	6
1983 .....	1.32	0.29	1.03	2.63	6
1982 .....	1.30	0.30	1.02	2.63	6
1981 .....	1.24	0.28	1.05	2.57	7
1980 .....	1.32	0.29	1.06	2.67	6
1979 .....	1.30	0.27	1.08	2.65	6
1978 .....	1.31	0.27	1.05	2.62	6
1977 .....	1.37	0.23	1.04	2.64	6
Maryland					
2006 .....	1.02	0.34	0.83	2.19	7
2005 .....	0.93	0.32	0.85	2.11	7
2004 .....	1.03	0.33	0.79	2.15	7
2003 .....	1.02	0.32	0.77	2.11	7
2002 .....	1.05	0.31	0.75	2.11	7
2001 .....	1.06	0.30	0.75	2.11	7
2000 .....	1.04	0.30	0.75	2.09	7
1999 .....	1.04	0.30	0.74	2.08	7
1998 .....	1.05	0.30	0.73	2.08	7
1997 .....	1.05	0.29	0.73	2.07	7

Decile values (1 = highest apply only to State-level data. Numbers may not sum because of rounding.

**Table 3.** Per capita ethanol consumption for States, census regions, and the United States, 1977-2006. [Gallons of ethanol, based on population age 14 and older] (Continued)

State or other Geographic area	Per capita consumption				U.S. decile for all beverages
	Beer	Wine	Spirits	All beverages	
1996 .....	1.05	0.29	0.74	2.08	7
1995 .....	1.06	0.28	0.74	2.09	7
1994 .....	1.09	0.28	0.78	2.15	6
1993 .....	1.10	0.28	0.80	2.19	7
1992 .....	1.11	0.29	0.86	2.26	6
1991 .....	1.15	0.30	0.89	2.33	6
1990 .....	1.22	0.33	0.96	2.51	5
1989 .....	1.22	0.34	0.98	2.54	4
1988 .....	1.26	0.36	1.01	2.62	4
1987 .....	1.29	0.38	1.07	2.74	3
1986 .....	1.29	0.39	1.08	2.75	4
1985 .....	1.31	0.36	1.14	2.81	4
1984 .....	1.31	0.36	1.17	2.84	4
1983 .....	1.34	0.35	1.20	2.89	4
1982 .....	1.27	0.32	1.17	2.77	5
1981 .....	1.39	0.34	1.33	3.06	4
1980 .....	1.42	0.33	1.35	3.09	4
1979 .....	1.43	0.31	1.39	3.14	3
1978 .....	1.41	0.31	1.38	3.09	3
1977 .....	1.37	0.30	1.39	3.05	3
Massachusetts					
2006 .....	1.10	0.61	0.84	2.55	3
2005 .....	1.07	0.59	0.85	2.50	3
2004 .....	1.10	0.58	0.84	2.52	3
2003 .....	1.10	0.56	0.82	2.48	3
2002 .....	1.13	0.54	0.80	2.46	3
2001 .....	1.12	0.52	0.78	2.43	3
2000 .....	1.16	0.51	0.87	2.55	2
1999 .....	1.09	0.51	0.79	2.39	3
1998 .....	1.14	0.50	0.75	2.39	3
1997 .....	1.13	0.49	0.76	2.39	3
1996 .....	1.11	0.48	0.77	2.35	3
1995 .....	1.13	0.44	0.78	2.35	3
1994 .....	1.14	0.44	0.80	2.38	3
1993 .....	1.14	0.44	0.80	2.38	4
1992 .....	1.12	0.44	0.82	2.38	5
1991 .....	1.19	0.43	0.87	2.49	3
1990 .....	1.22	0.45	0.97	2.63	3
1989 .....	1.26	0.47	1.02	2.75	3
1988 .....	1.29	0.50	1.07	2.86	3
1987 .....	1.29	0.51	1.12	2.93	3
1986 .....	1.31	0.53	1.12	2.96	3
1985 .....	1.30	0.51	1.21	3.01	3
1984 .....	1.30	0.51	1.24	3.04	3
1983 .....	1.36	0.50	1.21	3.07	3
1982 .....	1.35	0.49	1.22	3.07	3
1981 .....	1.44	0.49	1.24	3.17	3
1980 .....	1.47	0.45	1.27	3.19	3
1979 .....	1.39	0.42	1.23	3.04	4
1978 .....	1.37	0.40	1.25	3.02	4
1977 .....	1.34	0.37	1.24	2.95	3

Decile values (1 = highest) apply only to State-level data. Numbers may not sum because of rounding.

**Table 3.** Per capita ethanol consumption for States, census regions, and the United States, 1977-2006. [Gallons of ethanol, based on population age 14 and older] (Continued)

State or other Geographic area	Per capita consumption				U.S. decile for all beverages
	Beer	Wine	Spirits	All beverages	
<b>Michigan</b>					
2006 .....	1.12	0.29	0.76	2.17	7
2005 .....	1.14	0.28	0.75	2.17	7
2004 .....	1.15	0.28	0.72	2.15	7
2003 .....	1.17	0.26	0.70	2.13	7
2002 .....	1.16	0.23	0.68	2.07	7
2001 .....	1.19	0.24	0.68	2.10	7
2000 .....	1.19	0.24	0.69	2.12	7
1999 .....	1.19	0.24	0.68	2.11	7
1998 .....	1.20	0.22	0.69	2.12	7
1997 .....	1.17	0.22	0.66	2.06	7
1996 .....	1.20	0.22	0.67	2.08	7
1995 .....	1.20	0.19	0.66	2.06	7
1994 .....	1.23	0.20	0.67	2.10	7
1993 .....	1.25	0.20	0.72	2.18	7
1992 .....	1.26	0.22	0.74	2.21	7
1991 .....	1.30	0.22	0.74	2.26	6
1990 .....	1.33	0.28	0.80	2.42	6
1989 .....	1.29	0.30	0.80	2.38	6
1988 .....	1.31	0.32	0.84	2.47	6
1987 .....	1.32	0.33	0.85	2.50	6
1986 .....	1.33	0.33	0.90	2.56	5
1985 .....	1.30	0.32	0.95	2.58	6
1984 .....	1.32	0.31	0.97	2.60	6
1983 .....	1.35	0.28	0.97	2.60	6
1982 .....	1.35	0.39	0.98	2.72	6
1981 .....	1.34	0.29	1.00	2.63	6
1980 .....	1.34	0.28	1.03	2.65	6
1979 .....	1.37	0.25	1.03	2.65	6
1978 .....	1.43	0.25	1.05	2.74	5
1977 .....	1.45	0.24	1.02	2.71	5
<b>Minnesota</b>					
2006 .....	1.15	0.32	0.93	2.40	5
2005 .....	1.18	0.32	0.96	2.47	4
2004 .....	1.23	0.31	0.93	2.47	3
2003 .....	1.21	0.29	0.90	2.41	4
2002 .....	1.25	0.28	0.87	2.40	3
2001 .....	1.25	0.26	0.87	2.38	4
2000 .....	1.24	0.26	0.87	2.37	4
1999 .....	1.23	0.27	0.86	2.36	4
1998 .....	1.16	0.27	0.84	2.27	4
1997 .....	1.23	0.27	0.83	2.33	3
1996 .....	1.25	0.26	0.83	2.34	4
1995 .....	1.24	0.26	0.83	2.32	3
1994 .....	1.27	0.25	0.83	2.35	4
1993 .....	1.24	0.24	0.84	2.33	5
1992 .....	1.25	0.25	0.85	2.35	5
1991 .....	1.30	0.24	0.81	2.35	5
1990 .....	1.32	0.27	0.96	2.55	4
1989 .....	1.28	0.27	0.88	2.43	5
1988 .....	1.30	0.30	0.89	2.49	5
1987 .....	1.31	0.32	0.94	2.56	5

Decile values (1 = highest apply only to State-level data. Numbers may not sum because of rounding.

**Table 3.** Per capita ethanol consumption for States, census regions, and the United States, 1977-2006. [Gallons of ethanol, based on population age 14 and older] (Continued)

State or other Geographic area	Per capita consumption				U.S. decile for all beverages
	Beer	Wine	Spirits	All beverages	
1986 .....	1.30	0.33	0.92	2.56	6
1985 .....	1.31	0.31	1.06	2.68	5
1984 .....	1.34	0.28	1.07	2.68	5
1983 .....	1.37	0.27	1.10	2.74	6
1982 .....	1.36	0.27	1.11	2.75	6
1981 .....	1.39	0.27	1.18	2.83	5
1980 .....	1.40	0.26	1.20	2.85	5
1979 .....	1.35	0.24	1.16	2.75	5
1978 .....	1.31	0.23	1.15	2.69	5
1977 .....	1.30	0.20	1.15	2.65	5
Mississippi					
2006 .....	1.46	0.12	0.67	2.25	6
2005 .....	1.40	0.12	0.65	2.17	7
2004 .....	1.39	0.12	0.63	2.13	7
2003 .....	1.40	0.12	0.62	2.14	7
2002 .....	1.40	0.12	0.61	2.12	7
2001 .....	1.39	0.11	0.60	2.11	7
2000 .....	1.44	0.09	0.60	2.13	7
1999 .....	1.45	0.10	0.61	2.15	7
1998 .....	1.40	0.09	0.59	2.08	7
1997 .....	1.37	0.09	0.61	2.07	7
1996 .....	1.37	0.09	0.62	2.08	7
1995 .....	1.36	0.09	0.61	2.06	7
1994 .....	1.28	0.08	0.63	2.00	7
1993 .....	1.37	0.10	0.63	2.11	7
1992 .....	1.35	0.09	0.63	2.08	8
1991 .....	1.32	0.09	0.64	2.05	8
1990 .....	1.34	0.09	0.65	2.08	8
1989 .....	1.26	0.09	0.65	2.00	9
1988 .....	1.28	0.09	0.66	2.03	9
1987 .....	1.26	0.09	0.66	2.01	9
1986 .....	1.26	0.10	0.68	2.04	9
1985 .....	1.21	0.10	0.73	2.04	9
1984 .....	1.19	0.11	0.77	2.06	9
1983 .....	1.19	0.11	0.79	2.09	9
1982 .....	1.19	0.11	0.82	2.11	9
1981 .....	1.19	0.11	0.84	2.14	9
1980 .....	1.13	0.10	0.86	2.09	9
1979 .....	1.15	0.10	0.84	2.09	9
1978 .....	1.16	0.10	0.91	2.18	8
1977 .....	1.08	0.11	0.86	2.05	8
Missouri					
2006 .....	1.34	0.28	0.76	2.38	5
2005 .....	1.30	0.27	0.74	2.31	6
2004 .....	1.32	0.26	0.70	2.28	6
2003 .....	1.33	0.25	0.68	2.26	6
2002 .....	1.47	0.25	0.67	2.39	4
2001 .....	1.34	0.23	0.67	2.25	6
2000 .....	1.35	0.23	0.67	2.25	5
1999 .....	1.35	0.23	0.66	2.23	6
1998 .....	1.33	0.23	0.63	2.18	6
1997 .....	1.30	0.22	0.63	2.15	6

Decile values (1 = highest apply only to State-level data. Numbers may not sum because of rounding.



**Table 3.** Per capita ethanol consumption for States, census regions, and the United States, 1977-2006. [Gallons of ethanol, based on population age 14 and older] (Continued)

State or other Geographic area	Per capita consumption				U.S. decile for all beverages
	Beer	Wine	Spirits	All beverages	
1996 .....	1.31	0.22	0.57	2.09	7
1995 .....	1.31	0.20	0.62	2.14	6
1994 .....	1.36	0.19	0.66	2.21	6
1993 .....	1.33	0.20	0.67	2.20	6
1992 .....	1.34	0.21	0.69	2.24	6
1991 .....	1.35	0.22	0.64	2.20	7
1990 .....	1.37	0.22	0.70	2.30	7
1989 .....	1.33	0.22	0.69	2.24	7
1988 .....	1.33	0.25	0.69	2.28	7
1987 .....	1.36	0.27	0.72	2.35	7
1986 .....	1.36	0.28	0.72	2.36	7
1985 .....	1.33	0.26	0.76	2.36	7
1984 .....	1.34	0.25	0.68	2.27	8
1983 .....	1.37	0.22	0.78	2.37	8
1982 .....	1.38	0.21	0.79	2.38	7
1981 .....	1.40	0.21	0.83	2.45	7
1980 .....	1.39	0.20	0.84	2.44	7
1979 .....	1.37	0.20	0.86	2.43	7
1978 .....	1.31	0.20	0.89	2.40	7
1977 .....	1.23	0.19	0.83	2.25	8
Montana					
2006 .....	1.57	0.35	0.83	2.74	2
2005 .....	1.53	0.35	0.78	2.65	2
2004 .....	1.54	0.34	0.74	2.63	2
2003 .....	1.55	0.33	0.72	2.59	2
2002 .....	1.61	0.33	0.70	2.64	2
2001 .....	1.57	0.30	0.68	2.55	2
2000 .....	1.55	0.29	0.68	2.53	2
1999 .....	1.56	0.29	0.67	2.52	2
1998 .....	1.51	0.28	0.65	2.44	2
1997 .....	1.49	0.29	0.63	2.42	3
1996 .....	1.49	0.27	0.64	2.40	3
1995 .....	1.49	0.26	0.78	2.54	2
1994 .....	1.57	0.24	0.70	2.51	2
1993 .....	1.49	0.25	0.73	2.47	3
1992 .....	1.59	0.26	0.75	2.61	2
1991 .....	1.61	0.28	0.76	2.64	3
1990 .....	1.60	0.29	0.77	2.67	3
1989 .....	1.56	0.29	0.72	2.57	4
1988 .....	1.59	0.32	0.76	2.66	4
1987 .....	1.57	0.33	0.77	2.67	4
1986 .....	1.58	0.34	0.81	2.73	4
1985 .....	1.60	0.33	0.88	2.81	4
1984 .....	1.70	0.32	0.93	2.95	3
1983 .....	1.79	0.32	0.99	3.09	3
1982 .....	1.82	0.32	1.02	3.17	3
1981 .....	1.90	0.33	1.05	3.28	3
1980 .....	1.82	0.35	1.04	3.21	3
1979 .....	1.83	0.41	1.05	3.29	3
1978 .....	1.82	0.20	1.07	3.10	3
1977 .....	1.83	0.20	1.10	3.12	3

Decile values (1 = highest) apply only to State-level data. Numbers may not sum because of rounding.

**Table 3.** Per capita ethanol consumption for States, census regions, and the United States, 1977-2006. [Gallons of ethanol, based on population age 14 and older] (Continued)

State or other Geographic area	Per capita consumption				U.S. decile for all beverages
	Beer	Wine	Spirits	All beverages	
<b>Nebraska</b>					
2006 .....	1.43	0.21	0.71	2.35	6
2005 .....	1.41	0.20	0.68	2.29	6
2004 .....	1.43	0.19	0.64	2.26	6
2003 .....	1.42	0.18	0.63	2.23	6
2002 .....	1.45	0.17	0.61	2.23	6
2001 .....	1.43	0.16	0.60	2.19	6
2000 .....	1.44	0.17	0.62	2.23	6
1999 .....	1.42	0.17	0.60	2.19	6
1998 .....	1.39	0.18	0.58	2.16	6
1997 .....	1.35	0.18	0.56	2.09	7
1996 .....	1.35	0.18	0.57	2.11	6
1995 .....	1.35	0.19	0.57	2.10	7
1994 .....	1.39	0.18	0.57	2.14	7
1993 .....	1.37	0.18	0.59	2.14	7
1992 .....	1.37	0.18	0.61	2.16	7
1991 .....	1.40	0.18	0.61	2.19	7
1990 .....	1.41	0.20	0.64	2.25	7
1989 .....	1.37	0.19	0.62	2.18	7
1988 .....	1.37	0.22	0.65	2.23	7
1987 .....	1.40	0.22	0.65	2.27	7
1986 .....	1.38	0.23	0.67	2.28	7
1985 .....	1.40	0.22	0.75	2.37	7
1984 .....	1.44	0.20	0.76	2.41	7
1983 .....	1.49	0.21	0.79	2.49	7
1982 .....	1.50	0.28	0.58	2.37	7
1981 .....	1.57	0.20	0.88	2.66	6
1980 .....	1.56	0.19	0.89	2.64	6
1979 .....	1.50	0.18	0.88	2.57	7
1978 .....	1.47	0.18	0.89	2.54	7
1977 .....	1.45	0.17	0.91	2.53	6
<b>Nevada</b>					
2006 .....	1.74	0.66	1.30	3.70	1
2005 .....	1.71	0.62	1.23	3.56	1
2004 .....	1.75	0.64	1.26	3.66	1
2003 .....	1.76	0.62	1.25	3.63	1
2002 .....	1.75	0.61	1.24	3.60	1
2001 .....	1.81	0.60	1.22	3.63	1
2000 .....	1.79	0.62	1.26	3.67	1
1999 .....	1.82	0.63	1.29	3.74	1
1998 .....	1.80	0.58	1.23	3.62	1
1997 .....	1.84	0.58	1.30	3.72	1
1996 .....	1.91	0.59	1.39	3.89	1
1995 .....	1.87	0.58	1.39	3.84	1
1994 .....	1.93	0.57	1.51	4.00	1
1993 .....	1.95	0.58	1.54	4.06	1
1992 .....	2.02	0.62	1.61	4.25	1
1991 .....	2.05	0.63	1.63	4.31	1
1990 .....	2.17	0.69	1.92	4.78	1
1989 .....	2.18	0.73	1.92	4.83	1
1988 .....	2.13	0.78	2.00	4.91	1
1987 .....	2.05	0.84	2.09	4.99	1

Decile values (1 = highest apply only to State-level data. Numbers may not sum because of rounding.

**Table 3.** Per capita ethanol consumption for States, census regions, and the United States, 1977-2006. [Gallons of ethanol, based on population age 14 and older] (Continued)

State or other Geographic area	Per capita consumption				U.S. decile for all beverages
	Beer	Wine	Spirits	All beverages	
1986 .....	2.07	0.88	2.11	5.05	1
1985 .....	1.96	0.84	2.18	4.99	1
1984 .....	2.01	0.82	2.36	5.19	1
1983 .....	1.98	0.79	2.45	5.22	1
1982 .....	1.99	0.77	2.50	5.25	1
1981 .....	2.08	0.80	2.71	5.59	1
1980 .....	2.09	0.79	2.94	5.82	1
1979 .....	2.28	0.88	3.28	6.44	1
1978 .....	2.20	0.85	3.65	6.69	1
1977 .....	2.15	0.83	3.85	6.84	1
New Hampshire					
2006 .....	1.73	0.72	1.76	4.21	1
2005 .....	1.72	0.71	1.68	4.11	1
2004 .....	1.71	0.70	1.65	4.07	1
2003 .....	1.72	0.70	1.61	4.03	1
2002 .....	1.73	0.69	1.63	4.05	1
2001 .....	1.74	0.65	1.61	4.00	1
2000 .....	1.75	0.56	1.69	4.00	1
1999 .....	1.75	0.56	1.70	4.01	1
1998 .....	1.72	0.54	1.73	3.98	1
1997 .....	1.73	0.55	1.76	4.04	1
1996 .....	1.73	0.55	1.85	4.13	1
1995 .....	1.74	0.51	1.87	4.12	1
1994 .....	1.75	0.48	1.90	4.13	1
1993 .....	1.83	0.54	2.01	4.38	1
1992 .....	1.81	0.52	1.96	4.30	1
1991 .....	1.85	0.49	1.96	4.30	1
1990 .....	1.85	0.49	1.97	4.30	1
1989 .....	1.87	0.50	1.99	4.37	1
1988 .....	1.91	0.49	1.94	4.33	1
1987 .....	1.93	0.50	1.98	4.41	1
1986 .....	1.93	0.52	2.06	4.51	1
1985 .....	1.99	0.53	2.21	4.73	1
1984 .....	1.99	0.59	2.33	4.91	1
1983 .....	2.17	0.56	2.35	5.08	1
1982 .....	1.89	0.58	2.34	4.81	1
1981 .....	1.89	0.59	2.44	4.92	1
1980 .....	2.21	0.69	2.86	5.76	1
1979 .....	1.98	0.62	2.61	5.20	1
1978 .....	1.99	0.54	2.94	5.46	1
1977 .....	1.89	0.50	2.93	5.32	1
New Jersey					
2006 .....	0.94	0.53	0.84	2.32	6
2005 .....	0.95	0.51	0.82	2.28	6
2004 .....	0.96	0.52	0.82	2.29	5
2003 .....	0.95	0.50	0.79	2.24	6
2002 .....	0.98	0.49	0.77	2.24	6
2001 .....	0.99	0.47	0.75	2.20	6
2000 .....	0.96	0.47	0.77	2.19	6
1999 .....	0.97	0.46	0.71	2.14	7
1998 .....	0.98	0.46	0.69	2.12	7
1997 .....	0.98	0.42	0.74	2.15	6

Decile values (1 = highest apply only to State-level data. Numbers may not sum because of rounding.

**Table 3.** Per capita ethanol consumption for States, census regions, and the United States, 1977-2006. [Gallons of ethanol, based on population age 14 and older] (Continued)

State or other Geographic area	Per capita consumption				U.S. decile for all beverages
	Beer	Wine	Spirits	All beverages	
1996 .....	1.00	0.44	0.76	2.20	6
1995 .....	1.03	0.44	0.75	2.22	5
1994 .....	1.04	0.43	0.79	2.27	5
1993 .....	1.07	0.42	0.79	2.29	5
1992 .....	1.07	0.44	0.83	2.34	5
1991 .....	1.09	0.43	0.82	2.34	6
1990 .....	1.15	0.48	0.95	2.58	4
1989 .....	1.13	0.50	0.96	2.59	3
1988 .....	1.15	0.51	0.93	2.58	4
1987 .....	1.18	0.54	1.01	2.72	4
1986 .....	1.18	0.56	1.03	2.77	4
1985 .....	1.18	0.55	1.08	2.81	4
1984 .....	1.19	0.55	1.10	2.83	4
1983 .....	1.21	0.52	1.13	2.86	4
1982 .....	1.22	0.52	1.13	2.87	4
1981 .....	1.22	0.51	1.15	2.87	5
1980 .....	1.23	0.47	1.13	2.83	5
1979 .....	1.18	0.43	1.10	2.71	6
1978 .....	1.17	0.42	1.10	2.69	6
1977 .....	1.16	0.40	1.13	2.69	5
New Mexico					
2006 .....	1.38	0.31	0.70	2.39	5
2005 .....	1.48	0.29	0.67	2.44	4
2004 .....	1.45	0.25	0.66	2.35	5
2003 .....	1.52	0.27	0.61	2.40	4
2002 .....	1.53	0.26	0.61	2.40	3
2001 .....	1.54	0.25	0.61	2.39	3
2000 .....	1.53	0.25	0.61	2.38	3
1999 .....	1.53	0.25	0.59	2.36	4
1998 .....	1.49	0.24	0.58	2.31	4
1997 .....	1.51	0.24	0.58	2.33	3
1996 .....	1.55	0.24	0.59	2.38	3
1995 .....	1.56	0.24	0.60	2.40	3
1994 .....	1.46	0.19	0.60	2.25	5
1993 .....	1.53	0.23	0.63	2.39	3
1992 .....	1.56	0.25	0.66	2.47	4
1991 .....	1.64	0.26	0.64	2.54	3
1990 .....	1.68	0.28	0.68	2.64	3
1989 .....	1.64	0.29	0.65	2.58	4
1988 .....	1.63	0.33	0.67	2.64	4
1987 .....	1.63	0.35	0.67	2.65	4
1986 .....	1.64	0.35	0.70	2.70	4
1985 .....	1.70	0.36	0.77	2.83	4
1984 .....	1.71	0.28	0.76	2.75	5
1983 .....	1.72	0.31	0.98	3.00	4
1982 .....	1.72	0.34	0.94	3.00	4
1981 .....	1.74	0.32	0.95	3.01	4
1980 .....	1.66	0.32	1.00	2.99	4
1979 .....	1.71	0.30	1.01	3.02	4
1978 .....	1.68	0.32	0.98	2.99	4
1977 .....	1.65	0.32	0.96	2.93	4

Decile values (1 = highest) apply only to State-level data. Numbers may not sum because of rounding.

**Table 3.** Per capita ethanol consumption for States, census regions, and the United States, 1977-2006. [Gallons of ethanol, based on population age 14 and older] (Continued)

State or other Geographic area	Per capita consumption				U.S. decile for all beverages
	Beer	Wine	Spirits	All beverages	
<b>New York</b>					
2006 .....	0.88	0.45	0.65	1.99	9
2005 .....	0.90	0.43	0.64	1.97	8
2004 .....	0.91	0.41	0.62	1.95	9
2003 .....	0.93	0.40	0.61	1.93	9
2002 .....	0.95	0.38	0.59	1.91	9
2001 .....	0.96	0.37	0.56	1.88	9
2000 .....	0.92	0.38	0.58	1.88	9
1999 .....	0.93	0.37	0.56	1.85	9
1998 .....	0.95	0.38	0.51	1.84	9
1997 .....	0.94	0.37	0.57	1.87	8
1996 .....	0.97	0.36	0.57	1.90	8
1995 .....	0.98	0.38	0.57	1.93	8
1994 .....	0.98	0.35	0.60	1.93	8
1993 .....	1.00	0.35	0.62	1.98	8
1992 .....	1.04	0.37	0.68	2.09	8
1991 .....	1.09	0.37	0.69	2.14	7
1990 .....	1.13	0.41	0.76	2.30	7
1989 .....	1.12	0.42	0.82	2.36	7
1988 .....	1.15	0.45	0.87	2.47	6
1987 .....	1.15	0.48	0.90	2.53	5
1986 .....	1.13	0.50	0.92	2.55	6
1985 .....	1.14	0.49	0.98	2.62	5
1984 .....	1.15	0.49	1.03	2.67	5
1983 .....	1.23	0.49	1.05	2.77	5
1982 .....	1.26	0.48	1.10	2.84	5
1981 .....	1.25	0.46	1.12	2.83	5
1980 .....	1.28	0.46	1.18	2.91	5
1979 .....	1.21	0.44	1.17	2.82	5
1978 .....	1.18	0.42	1.17	2.77	5
1977 .....	1.18	0.38	1.17	2.74	5
<b>North Carolina</b>					
2006 .....	1.15	0.27	0.55	1.97	9
2005 .....	1.13	0.27	0.54	1.94	9
2004 .....	1.17	0.27	0.53	1.97	8
2003 .....	1.21	0.27	0.52	2.00	8
2002 .....	1.25	0.27	0.50	2.02	8
2001 .....	1.23	0.25	0.51	2.00	8
2000 .....	1.19	0.23	0.52	1.94	8
1999 .....	1.16	0.24	0.51	1.90	8
1998 .....	1.13	0.23	0.50	1.87	8
1997 .....	1.15	0.23	0.51	1.89	8
1996 .....	1.14	0.24	0.52	1.90	8
1995 .....	1.12	0.22	0.53	1.86	8
1994 .....	1.14	0.21	0.54	1.89	8
1993 .....	1.14	0.22	0.56	1.92	9
1992 .....	1.14	0.23	0.59	1.96	8
1991 .....	1.11	0.24	0.60	1.96	9
1990 .....	1.16	0.27	0.65	2.08	9
1989 .....	1.13	0.27	0.66	2.06	8
1988 .....	1.12	0.28	0.68	2.09	8
1987 .....	1.11	0.28	0.71	2.10	8

Decile values (1 = highest apply only to State-level data. Numbers may not sum because of rounding.

**Table 3.** Per capita ethanol consumption for States, census regions, and the United States, 1977-2006. [Gallons of ethanol, based on population age 14 and older] (Continued)

State or other Geographic area	Per capita consumption				U.S. decile for all beverages
	Beer	Wine	Spirits	All beverages	
1986 .....	1.12	0.30	0.74	2.15	8
1985 .....	1.09	0.27	0.76	2.13	8
1984 .....	1.11	0.24	0.78	2.13	8
1983 .....	1.10	0.22	0.80	2.12	9
1982 .....	1.07	0.21	0.85	2.13	9
1981 .....	1.10	0.21	0.86	2.17	9
1980 .....	1.11	0.20	0.86	2.17	9
1979 .....	1.08	0.22	0.88	2.18	8
1978 .....	1.06	0.20	0.86	2.12	9
1977 .....	1.01	0.20	0.84	2.05	8
North Dakota					
2006 .....	1.52	0.21	1.01	2.74	2
2005 .....	1.51	0.19	0.95	2.65	2
2004 .....	1.50	0.18	0.83	2.50	3
2003 .....	1.53	0.17	0.86	2.56	2
2002 .....	1.51	0.16	0.84	2.51	2
2001 .....	1.46	0.15	0.80	2.41	3
2000 .....	1.47	0.15	0.79	2.40	3
1999 .....	1.49	0.15	0.78	2.42	3
1998 .....	1.45	0.13	0.76	2.35	3
1997 .....	1.40	0.13	0.77	2.30	4
1996 .....	1.40	0.13	0.77	2.29	4
1995 .....	1.35	0.16	0.77	2.28	4
1994 .....	1.39	0.15	0.78	2.32	4
1993 .....	1.37	0.15	0.84	2.36	4
1992 .....	1.38	0.15	0.85	2.39	5
1991 .....	1.43	0.16	0.86	2.44	4
1990 .....	1.47	0.17	0.93	2.56	4
1989 .....	1.38	0.17	0.84	2.38	6
1988 .....	1.38	0.19	0.86	2.43	6
1987 .....	1.35	0.20	0.87	2.42	6
1986 .....	1.32	0.22	0.86	2.40	7
1985 .....	1.33	0.19	0.96	2.48	7
1984 .....	1.40	0.17	0.98	2.55	6
1983 .....	1.48	0.17	1.05	2.71	6
1982 .....	1.52	0.18	1.09	2.79	5
1981 .....	1.53	0.18	1.14	2.85	5
1980 .....	1.53	0.17	1.14	2.83	5
1979 .....	1.45	0.16	1.10	2.71	6
1978 .....	1.45	0.16	1.15	2.76	5
1977 .....	1.35	0.15	1.12	2.62	6
Ohio					
2006 .....	1.32	0.24	0.44	2.00	8
2005 .....	1.31	0.23	0.43	1.97	9
2004 .....	1.33	0.22	0.41	1.96	9
2003 .....	1.33	0.22	0.48	2.03	8
2002 .....	1.34	0.21	0.47	2.02	8
2001 .....	1.33	0.21	0.47	2.00	8
2000 .....	1.30	0.19	0.50	1.99	8
1999 .....	1.32	0.20	0.48	2.00	8
1998 .....	1.31	0.19	0.47	1.97	8
1997 .....	1.28	0.18	0.46	1.91	8

Decile values (1 = highest) apply only to State-level data. Numbers may not sum because of rounding.

**Table 3.** Per capita ethanol consumption for States, census regions, and the United States, 1977-2006. [Gallons of ethanol, based on population age 14 and older] (Continued)

State or other Geographic area	Per capita consumption				U.S. decile for all beverages
	Beer	Wine	Spirits	All beverages	
1996 .....	1.30	0.18	0.45	1.93	8
1995 .....	1.28	0.17	0.46	1.90	8
1994 .....	1.31	0.16	0.37	1.85	9
1993 .....	1.29	0.16	0.50	1.95	8
1992 .....	1.32	0.17	0.50	1.98	8
1991 .....	1.33	0.18	0.51	2.03	8
1990 .....	1.34	0.22	0.53	2.09	8
1989 .....	1.35	0.22	0.50	2.07	8
1988 .....	1.34	0.24	0.54	2.11	8
1987 .....	1.35	0.24	0.59	2.17	8
1986 .....	1.32	0.25	0.60	2.17	8
1985 .....	1.37	0.25	0.59	2.20	8
1984 .....	1.41	0.25	0.61	2.26	8
1983 .....	1.36	0.22	0.65	2.22	8
1982 .....	1.40	0.22	0.66	2.28	8
1981 .....	1.35	0.22	0.68	2.25	8
1980 .....	1.39	0.22	0.72	2.33	8
1979 .....	1.36	0.20	0.71	2.26	8
1978 .....	1.19	0.20	0.70	2.09	9
1977 .....	1.17	0.18	0.70	2.04	9
Oklahoma					
2006 .....	0.78	0.17	0.57	1.51	10
2005 .....	0.78	0.16	0.55	1.50	10
2004 .....	0.94	0.13	0.45	1.53	10
2003 .....	1.06	0.13	0.73	1.93	9
2002 .....	1.11	0.13	0.58	1.82	10
2001 .....	1.11	0.12	0.43	1.65	10
2000 .....	1.13	0.12	0.44	1.69	10
1999 .....	1.11	0.12	0.44	1.68	10
1998 .....	1.12	0.12	0.43	1.68	10
1997 .....	1.10	0.12	0.43	1.65	10
1996 .....	1.09	0.12	0.45	1.66	10
1995 .....	1.10	0.12	0.44	1.66	10
1994 .....	1.15	0.13	0.50	1.78	9
1993 .....	1.11	0.11	0.48	1.70	10
1992 .....	1.13	0.13	0.55	1.81	9
1991 .....	1.09	0.13	0.54	1.76	10
1990 .....	1.12	0.14	0.55	1.81	10
1989 .....	1.05	0.13	0.53	1.70	10
1988 .....	1.05	0.14	0.50	1.69	10
1987 .....	1.04	0.15	0.57	1.76	10
1986 .....	1.04	0.15	0.61	1.80	10
1985 .....	1.04	0.15	0.68	1.87	10
1984 .....	1.01	0.16	0.74	1.91	9
1983 .....	1.05	0.16	0.77	1.98	9
1982 .....	1.17	0.16	0.83	2.17	8
1981 .....	1.14	0.16	0.83	2.13	9
1980 .....	1.08	0.16	0.71	1.95	9
1979 .....	1.05	0.13	0.80	1.98	9
1978 .....	1.08	0.14	0.82	2.04	9
1977 .....	1.07	0.14	0.78	1.98	9

Decile values (1 = highest) apply only to State-level data. Numbers may not sum because of rounding.

**Table 3.** Per capita ethanol consumption for States, census regions, and the United States, 1977-2006. [Gallons of ethanol, based on population age 14 and older] (Continued)

State or other Geographic area	Per capita consumption				U.S. decile for all beverages
	Beer	Wine	Spirits	All beverages	
<b>Oregon</b>					
2006 .....	1.26	0.49	0.78	2.53	4
2005 .....	1.23	0.48	0.74	2.46	4
2004 .....	1.22	0.49	0.71	2.42	4
2003 .....	1.20	0.47	0.68	2.35	5
2002 .....	1.22	0.46	0.66	2.34	4
2001 .....	1.22	0.43	0.65	2.30	5
2000 .....	1.20	0.44	0.64	2.28	5
1999 .....	1.21	0.43	0.63	2.27	5
1998 .....	1.20	0.43	0.61	2.25	5
1997 .....	1.19	0.44	0.60	2.24	5
1996 .....	1.23	0.44	0.61	2.27	5
1995 .....	1.21	0.42	0.59	2.23	5
1994 .....	1.23	0.37	0.62	2.21	6
1993 .....	1.24	0.43	0.64	2.31	5
1992 .....	1.29	0.46	0.67	2.41	4
1991 .....	1.28	0.44	0.67	2.38	5
1990 .....	1.32	0.47	0.73	2.51	5
1989 .....	1.26	0.46	0.69	2.41	6
1988 .....	1.27	0.51	0.71	2.48	5
1987 .....	1.26	0.53	0.72	2.50	6
1986 .....	1.26	0.54	0.73	2.54	6
1985 .....	1.25	0.55	0.77	2.57	6
1984 .....	1.28	0.53	0.82	2.63	6
1983 .....	1.31	0.53	0.85	2.69	6
1982 .....	1.33	0.53	0.88	2.74	6
1981 .....	1.38	0.50	0.92	2.80	6
1980 .....	1.37	0.51	0.94	2.82	5
1979 .....	1.39	0.47	0.96	2.82	5
1978 .....	1.34	0.47	0.98	2.79	5
1977 .....	1.33	0.46	0.96	2.74	5
<b>Pennsylvania</b>					
2006 .....	1.30	0.24	0.57	2.12	8
2005 .....	1.29	0.24	0.55	2.08	8
2004 .....	1.30	0.24	0.54	2.08	8
2003 .....	1.30	0.23	0.51	2.04	8
2002 .....	1.35	0.22	0.49	2.06	8
2001 .....	1.32	0.20	0.48	2.00	8
2000 .....	1.21	0.21	0.47	1.90	9
1999 .....	1.20	0.21	0.46	1.87	9
1998 .....	1.21	0.19	0.45	1.86	9
1997 .....	1.20	0.19	0.44	1.84	9
1996 .....	1.22	0.19	0.45	1.86	9
1995 .....	1.23	0.18	0.45	1.86	9
1994 .....	1.28	0.18	0.47	1.93	8
1993 .....	1.31	0.17	0.48	1.96	8
1992 .....	1.30	0.18	0.51	1.99	8
1991 .....	1.36	0.17	0.52	2.05	8
1990 .....	1.42	0.18	0.55	2.15	8
1989 .....	1.36	0.18	0.56	2.10	7
1988 .....	1.39	0.19	0.53	2.11	8
1987 .....	1.38	0.20	0.61	2.20	8

Decile values (1 = highest) apply only to State-level data. Numbers may not sum because of rounding.



**Table 3.** Per capita ethanol consumption for States, census regions, and the United States, 1977-2006. [Gallons of ethanol, based on population age 14 and older] (Continued)

State or other Geographic area	Per capita consumption				U.S. decile for all beverages
	Beer	Wine	Spirits	All beverages	
1986 .....	1.38	0.21	0.64	2.23	8
1985 .....	1.37	0.21	0.65	2.22	8
1984 .....	1.37	0.21	0.66	2.25	8
1983 .....	1.41	0.22	0.67	2.29	8
1982 .....	1.44	0.23	0.70	2.36	8
1981 .....	1.42	0.23	0.72	2.37	8
1980 .....	1.45	0.22	0.71	2.39	7
1979 .....	1.42	0.22	0.73	2.37	8
1978 .....	1.36	0.21	0.74	2.32	8
1977 .....	1.35	0.20	0.74	2.29	8
Rhode Island					
2006 .....	1.13	0.53	0.86	2.52	4
2005 .....	1.13	0.51	0.81	2.45	4
2004 .....	1.12	0.49	0.79	2.40	5
2003 .....	1.12	0.51	0.79	2.42	3
2002 .....	1.17	0.48	0.73	2.38	4
2001 .....	1.19	0.46	0.70	2.35	4
2000 .....	1.15	0.46	0.70	2.31	5
1999 .....	1.14	0.45	0.69	2.28	4
1998 .....	1.14	0.47	0.63	2.24	5
1997 .....	1.22	0.44	0.64	2.30	4
1996 .....	1.16	0.42	0.65	2.24	5
1995 .....	1.19	0.38	0.60	2.17	6
1994 .....	1.23	0.38	0.66	2.27	5
1993 .....	1.22	0.36	0.69	2.27	6
1992 .....	1.24	0.39	0.70	2.33	6
1991 .....	1.33	0.37	0.71	2.41	4
1990 .....	1.31	0.44	0.79	2.54	5
1989 .....	1.37	0.46	0.87	2.69	3
1988 .....	1.39	0.49	0.97	2.85	3
1987 .....	1.40	0.51	0.94	2.85	3
1986 .....	1.41	0.53	0.93	2.86	3
1985 .....	1.40	0.51	1.03	2.94	3
1984 .....	1.37	0.52	1.03	2.92	3
1983 .....	1.48	0.50	1.06	3.04	3
1982 .....	1.34	0.55	1.04	2.93	4
1981 .....	1.36	0.52	1.04	2.92	4
1980 .....	1.46	0.53	1.14	3.14	3
1979 .....	1.46	0.50	1.11	3.07	3
1978 .....	1.41	0.50	1.16	3.07	3
1977 .....	1.39	0.43	1.12	2.93	4
South Carolina					
2006 .....	1.46	0.24	0.77	2.46	5
2005 .....	1.41	0.24	0.76	2.41	5
2004 .....	1.44	0.24	0.76	2.44	4
2003 .....	1.38	0.23	0.74	2.35	5
2002 .....	1.47	0.22	0.67	2.36	4
2001 .....	1.45	0.22	0.65	2.32	4
2000 .....	1.45	0.22	0.70	2.37	4
1999 .....	1.43	0.22	0.72	2.38	3
1998 .....	1.42	0.21	0.72	2.35	3
1997 .....	1.40	0.19	0.71	2.30	4

Decile values (1 = highest apply only to State-level data. Numbers may not sum because of rounding.

**Table 3.** Per capita ethanol consumption for States, census regions, and the United States, 1977-2006. [Gallons of ethanol, based on population age 14 and older] (Continued)

State or other Geographic area	Per capita consumption				U.S. decile for all beverages
	Beer	Wine	Spirits	All beverages	
1996 .....	1.39	0.21	0.71	2.31	4
1995 .....	1.38	0.18	0.67	2.23	5
1994 .....	1.38	0.17	0.74	2.29	4
1993 .....	1.36	0.20	0.75	2.30	5
1992 .....	1.34	0.20	0.79	2.33	5
1991 .....	1.34	0.22	0.84	2.41	5
1990 .....	1.44	0.25	0.92	2.61	4
1989 .....	1.37	0.24	0.86	2.47	5
1988 .....	1.37	0.26	0.89	2.51	5
1987 .....	1.34	0.27	0.88	2.49	6
1986 .....	1.30	0.27	0.92	2.50	6
1985 .....	1.26	0.25	0.99	2.49	6
1984 .....	1.26	0.24	1.00	2.50	7
1983 .....	1.26	0.20	1.01	2.47	7
1982 .....	1.24	0.20	1.00	2.44	7
1981 .....	1.25	0.19	1.05	2.49	7
1980 .....	1.22	0.18	1.06	2.46	7
1979 .....	1.25	0.17	1.18	2.60	7
1978 .....	1.20	0.17	1.21	2.59	7
1977 .....	1.17	0.17	1.14	2.49	7
South Dakota					
2006 .....	1.51	0.19	0.79	2.48	4
2005 .....	1.50	0.19	0.83	2.52	3
2004 .....	1.50	0.18	0.76	2.43	4
2003 .....	1.51	0.16	0.73	2.40	4
2002 .....	1.51	0.16	0.70	2.37	4
2001 .....	1.46	0.15	0.71	2.31	4
2000 .....	1.44	0.15	0.68	2.27	5
1999 .....	1.43	0.14	0.70	2.27	5
1998 .....	1.42	0.13	0.68	2.24	5
1997 .....	1.36	0.13	0.69	2.18	6
1996 .....	1.36	0.13	0.68	2.18	6
1995 .....	1.34	0.12	0.73	2.20	6
1994 .....	1.38	0.12	0.73	2.24	5
1993 .....	1.35	0.12	0.73	2.20	6
1992 .....	1.37	0.15	0.74	2.26	6
1991 .....	1.37	0.15	0.76	2.27	6
1990 .....	1.36	0.18	0.80	2.34	6
1989 .....	1.25	0.15	0.70	2.09	8
1988 .....	1.21	0.16	0.76	2.13	8
1987 .....	1.24	0.19	0.79	2.22	8
1986 .....	1.22	0.19	0.81	2.23	8
1985 .....	1.22	0.18	0.94	2.34	8
1984 .....	1.27	0.17	0.89	2.33	7
1983 .....	1.30	0.17	0.95	2.43	7
1982 .....	1.29	0.18	0.98	2.45	7
1981 .....	1.32	0.19	1.05	2.56	7
1980 .....	1.30	0.18	1.07	2.56	7
1979 .....	1.23	0.17	1.04	2.44	7
1978 .....	1.19	0.17	1.05	2.42	7
1977 .....	1.15	0.17	1.06	2.38	7

Decile values (1 = highest) apply only to State-level data. Numbers may not sum because of rounding.

**Table 3.** Per capita ethanol consumption for States, census regions, and the United States, 1977-2006. [Gallons of ethanol, based on population age 14 and older] (Continued)

State or other Geographic area	Per capita consumption				U.S. decile for all beverages
	Beer	Wine	Spirits	All beverages	
<b>Tennessee</b>					
2006 .....	1.14	0.19	0.56	1.89	9
2005 .....	1.19	0.19	0.55	1.93	9
2004 .....	1.21	0.18	0.53	1.92	9
2003 .....	1.26	0.18	0.52	1.96	9
2002 .....	1.17	0.17	0.51	1.85	9
2001 .....	1.13	0.16	0.50	1.79	9
2000 .....	1.21	0.15	0.50	1.86	9
1999 .....	1.21	0.15	0.49	1.86	9
1998 .....	1.19	0.15	0.50	1.84	9
1997 .....	1.16	0.16	0.50	1.82	9
1996 .....	1.18	0.15	0.51	1.84	9
1995 .....	1.18	0.15	0.52	1.84	9
1994 .....	1.18	0.15	0.53	1.86	9
1993 .....	1.20	0.14	0.54	1.87	9
1992 .....	1.21	0.14	0.56	1.90	9
1991 .....	1.19	0.13	0.54	1.87	9
1990 .....	1.22	0.14	0.60	1.96	9
1989 .....	1.18	0.14	0.59	1.90	9
1988 .....	1.20	0.14	0.60	1.95	9
1987 .....	1.17	0.15	0.62	1.94	9
1986 .....	1.17	0.16	0.63	1.96	9
1985 .....	1.11	0.16	0.67	1.94	9
1984 .....	1.11	0.15	0.70	1.95	9
1983 .....	1.10	0.14	0.69	1.93	10
1982 .....	1.13	0.14	0.70	1.96	10
1981 .....	1.14	0.13	0.72	1.98	10
1980 .....	1.10	0.12	0.69	1.92	9
1979 .....	1.14	0.11	0.73	1.98	9
1978 .....	1.16	0.11	0.72	1.99	9
1977 .....	1.10	0.10	0.71	1.91	10
<b>Texas</b>					
2006 .....	1.43	0.26	0.55	2.24	7
2005 .....	1.42	0.25	0.53	2.19	7
2004 .....	1.45	0.24	0.52	2.21	6
2003 .....	1.46	0.23	0.51	2.19	6
2002 .....	1.50	0.22	0.50	2.21	6
2001 .....	1.51	0.21	0.49	2.21	6
2000 .....	1.53	0.22	0.50	2.25	6
1999 .....	1.54	0.20	0.49	2.23	6
1998 .....	1.53	0.23	0.49	2.25	5
1997 .....	1.54	0.20	0.47	2.22	5
1996 .....	1.56	0.22	0.49	2.26	5
1995 .....	1.55	0.19	0.49	2.23	5
1994 .....	1.60	0.20	0.51	2.31	4
1993 .....	1.60	0.20	0.53	2.33	4
1992 .....	1.65	0.24	0.55	2.45	4
1991 .....	1.60	0.25	0.55	2.40	5
1990 .....	1.64	0.26	0.58	2.47	6
1989 .....	1.62	0.26	0.58	2.46	5
1988 .....	1.61	0.28	0.59	2.47	6
1987 .....	1.61	0.29	0.61	2.51	6

Decile values (1 = highest apply only to State-level data. Numbers may not sum because of rounding.

**Table 3.** Per capita ethanol consumption for States, census regions, and the United States, 1977-2006. [Gallons of ethanol, based on population age 14 and older] (Continued)

State or other Geographic area	Per capita consumption				U.S. decile for all beverages
	Beer	Wine	Spirits	All beverages	
1986 .....	1.67	0.31	0.65	2.63	5
1985 .....	1.68	0.30	0.73	2.70	5
1984 .....	1.74	0.28	0.79	2.82	4
1983 .....	1.73	0.27	0.79	2.79	5
1982 .....	1.83	0.18	0.84	2.85	4
1981 .....	1.84	0.24	0.85	2.93	4
1980 .....	1.77	0.22	0.81	2.80	6
1979 .....	1.76	0.14	0.87	2.77	5
1978 .....	1.70	0.14	0.84	2.68	6
1977 .....	1.63	0.14	0.81	2.58	6
Utah					
2006 .....	0.71	0.16	0.43	1.30	10
2005 .....	0.69	0.16	0.41	1.26	10
2004 .....	0.75	0.15	0.39	1.28	10
2003 .....	0.77	0.15	0.39	1.31	10
2002 .....	0.78	0.14	0.39	1.31	10
2001 .....	0.76	0.14	0.39	1.29	10
2000 .....	0.77	0.11	0.40	1.27	10
1999 .....	0.79	0.10	0.38	1.27	10
1998 .....	0.73	0.10	0.37	1.20	10
1997 .....	0.76	0.10	0.39	1.25	10
1996 .....	0.77	0.10	0.37	1.24	10
1995 .....	0.75	0.09	0.37	1.21	10
1994 .....	0.76	0.09	0.38	1.24	10
1993 .....	0.78	0.11	0.39	1.28	10
1992 .....	0.79	0.12	0.42	1.33	10
1991 .....	0.80	0.12	0.43	1.34	10
1990 .....	0.80	0.12	0.46	1.39	10
1989 .....	0.82	0.13	0.47	1.42	10
1988 .....	0.83	0.14	0.49	1.45	10
1987 .....	0.84	0.15	0.50	1.49	10
1986 .....	0.89	0.17	0.52	1.58	10
1985 .....	0.90	0.15	0.53	1.58	10
1984 .....	0.88	0.14	0.52	1.53	10
1983 .....	0.88	0.14	0.50	1.52	10
1982 .....	1.01	0.15	0.55	1.71	10
1981 .....	1.01	0.15	0.58	1.74	10
1980 .....	0.96	0.14	0.60	1.71	10
1979 .....	0.97	0.16	0.62	1.75	10
1978 .....	0.96	0.15	0.61	1.72	10
1977 .....	0.97	0.14	0.59	1.70	10
Vermont					
2006 .....	1.35	0.58	0.69	2.62	3
2005 .....	1.33	0.56	0.67	2.56	3
2004 .....	1.32	0.54	0.66	2.52	3
2003 .....	1.32	0.51	0.64	2.47	3
2002 .....	1.32	0.49	0.63	2.44	3
2001 .....	1.29	0.47	0.63	2.39	4
2000 .....	1.23	0.47	0.63	2.34	4
1999 .....	1.23	0.47	0.62	2.32	4
1998 .....	1.25	0.47	0.62	2.34	4
1997 .....	1.23	0.46	0.63	2.33	4

Decile values (1 = highest apply only to State-level data. Numbers may not sum because of rounding.

**Table 3.** Per capita ethanol consumption for States, census regions, and the United States, 1977-2006. [Gallons of ethanol, based on population age 14 and older] (Continued)

State or other Geographic area	Per capita consumption				U.S. decile for all beverages
	Beer	Wine	Spirits	All beverages	
1996 .....	1.29	0.46	0.64	2.38	3
1995 .....	1.27	0.41	0.66	2.34	3
1994 .....	1.34	0.42	0.74	2.50	3
1993 .....	1.34	0.44	0.74	2.52	2
1992 .....	1.35	0.44	0.78	2.57	3
1991 .....	1.41	0.46	0.82	2.69	2
1990 .....	1.47	0.48	0.85	2.80	2
1989 .....	1.45	0.51	0.88	2.84	2
1988 .....	1.51	0.56	0.93	3.00	2
1987 .....	1.56	0.58	0.98	3.11	1
1986 .....	1.55	0.59	1.04	3.17	1
1985 .....	1.49	0.55	1.09	3.13	2
1984 .....	1.48	0.49	1.15	3.12	2
1983 .....	1.52	0.50	1.19	3.21	2
1982 .....	1.49	0.50	1.25	3.24	2
1981 .....	1.49	0.50	1.33	3.32	2
1980 .....	1.43	0.48	1.39	3.30	2
1979 .....	1.57	0.47	1.50	3.54	1
1978 .....	1.53	0.47	1.59	3.59	1
1977 .....	1.42	0.44	1.58	3.44	1
Virginia					
2006 .....	1.14	0.39	0.57	2.10	8
2005 .....	1.13	0.38	0.55	2.06	8
2004 .....	1.14	0.37	0.54	2.06	8
2003 .....	1.14	0.36	0.53	2.03	8
2002 .....	1.15	0.34	0.51	2.00	8
2001 .....	1.15	0.32	0.50	1.98	8
2000 .....	1.16	0.31	0.50	1.97	8
1999 .....	1.18	0.32	0.47	1.96	8
1998 .....	1.18	0.29	0.47	1.94	8
1997 .....	1.13	0.29	0.48	1.90	8
1996 .....	1.13	0.30	0.49	1.92	8
1995 .....	1.15	0.29	0.49	1.93	8
1994 .....	1.20	0.27	0.51	1.99	8
1993 .....	1.24	0.27	0.54	2.05	8
1992 .....	1.25	0.28	0.57	2.10	7
1991 .....	1.20	0.28	0.58	2.06	8
1990 .....	1.25	0.30	0.62	2.18	8
1989 .....	1.23	0.31	0.65	2.19	7
1988 .....	1.31	0.25	0.68	2.24	7
1987 .....	1.40	0.26	0.71	2.36	7
1986 .....	1.52	0.27	0.73	2.53	6
1985 .....	1.46	0.30	0.79	2.55	6
1984 .....	1.46	0.29	0.80	2.55	6
1983 .....	1.47	0.27	0.82	2.57	6
1982 .....	1.45	0.27	0.86	2.59	6
1981 .....	1.23	0.27	0.89	2.39	7
1980 .....	1.23	0.25	0.91	2.39	7
1979 .....	1.23	0.25	0.92	2.40	8
1978 .....	1.22	0.21	0.90	2.33	8
1977 .....	1.19	0.21	0.90	2.30	7

Decile values (1 = highest) apply only to State-level data. Numbers may not sum because of rounding.

**Table 3.** Per capita ethanol consumption for States, census regions, and the United States, 1977-2006. [Gallons of ethanol, based on population age 14 and older] (Continued)

State or other Geographic area	Per capita consumption				U.S. decile for all beverages
	Beer	Wine	Spirits	All beverages	
<b>Washington</b>					
2006 .....	1.05	0.48	0.71	2.24	7
2005 .....	1.10	0.55	0.68	2.33	5
2004 .....	1.04	0.46	0.69	2.20	7
2003 .....	1.05	0.46	0.67	2.19	7
2002 .....	1.08	0.42	0.65	2.16	7
2001 .....	1.08	0.40	0.65	2.13	7
2000 .....	1.09	0.41	0.66	2.16	7
1999 .....	1.10	0.40	0.63	2.13	7
1998 .....	1.12	0.43	0.63	2.18	6
1997 .....	1.11	0.42	0.63	2.16	6
1996 .....	1.13	0.40	0.63	2.16	6
1995 .....	1.14	0.40	0.63	2.17	6
1994 .....	1.18	0.39	0.65	2.23	6
1993 .....	1.19	0.39	0.69	2.27	5
1992 .....	1.26	0.46	0.72	2.44	4
1991 .....	1.23	0.43	0.73	2.39	5
1990 .....	1.27	0.46	0.76	2.49	5
1989 .....	1.24	0.47	0.75	2.45	5
1988 .....	1.22	0.50	0.77	2.49	5
1987 .....	1.23	0.56	0.79	2.58	5
1986 .....	1.23	0.61	0.82	2.65	5
1985 .....	1.22	0.59	0.87	2.68	5
1984 .....	1.24	0.57	0.91	2.71	5
1983 .....	1.29	0.54	0.94	2.76	5
1982 .....	1.33	0.53	0.99	2.85	4
1981 .....	1.38	0.54	1.05	2.97	4
1980 .....	1.52	0.52	1.08	3.12	3
1979 .....	1.41	0.48	1.10	2.99	4
1978 .....	1.39	0.48	1.09	2.96	4
1977 .....	1.36	0.45	1.08	2.89	4
<b>West Virginia</b>					
2006 .....	1.22	0.10	0.42	1.74	10
2005 .....	1.23	0.10	0.40	1.73	10
2004 .....	1.25	0.10	0.39	1.75	10
2003 .....	1.23	0.10	0.38	1.71	10
2002 .....	1.26	0.10	0.38	1.74	10
2001 .....	1.23	0.10	0.37	1.70	10
2000 .....	1.18	0.10	0.35	1.64	10
1999 .....	1.18	0.10	0.37	1.66	10
1998 .....	1.17	0.10	0.36	1.63	10
1997 .....	1.14	0.10	0.37	1.60	10
1996 .....	1.14	0.10	0.37	1.61	10
1995 .....	1.14	0.09	0.38	1.61	10
1994 .....	1.17	0.08	0.39	1.64	10
1993 .....	1.18	0.08	0.40	1.67	10
1992 .....	1.16	0.09	0.41	1.66	10
1991 .....	1.18	0.09	0.43	1.70	10
1990 .....	1.20	0.10	0.42	1.72	10
1989 .....	1.12	0.11	0.38	1.60	10
1988 .....	1.12	0.12	0.40	1.64	10
1987 .....	1.11	0.13	0.41	1.64	10

Decile values (1 = highest apply only to State-level data. Numbers may not sum because of rounding.

**Table 3.** Per capita ethanol consumption for States, census regions, and the United States, 1977-2006. [Gallons of ethanol, based on population age 14 and older] (Continued)

State or other Geographic area	Per capita consumption				U.S. decile for all beverages
	Beer	Wine	Spirits	All beverages	
1986 .....	1.10	0.13	0.41	1.64	10
1985 .....	1.11	0.13	0.42	1.66	10
1984 .....	1.12	0.12	0.44	1.68	10
1983 .....	1.13	0.13	0.48	1.74	10
1982 .....	1.11	0.14	0.55	1.80	10
1981 .....	1.06	0.14	0.66	1.85	10
1980 .....	1.00	0.09	0.72	1.82	10
1979 .....	0.97	0.09	0.77	1.83	10
1978 .....	0.96	0.09	0.79	1.84	10
1977 .....	0.98	0.09	0.78	1.85	10
Wisconsin					
2006 .....	1.56	0.32	1.09	2.96	1
2005 .....	1.55	0.31	1.07	2.92	1
2004 .....	1.52	0.30	1.01	2.83	1
2003 .....	1.52	0.29	1.00	2.81	2
2002 .....	1.56	0.28	0.98	2.81	2
2001 .....	1.53	0.26	0.95	2.74	2
2000 .....	1.54	0.27	0.95	2.76	1
1999 .....	1.53	0.26	0.92	2.72	2
1998 .....	1.61	0.26	0.79	2.65	2
1997 .....	1.57	0.25	0.89	2.71	1
1996 .....	1.53	0.24	0.88	2.65	1
1995 .....	1.55	0.23	0.87	2.65	1
1994 .....	1.58	0.22	0.91	2.72	2
1993 .....	1.59	0.22	0.89	2.71	1
1992 .....	1.59	0.25	0.90	2.74	2
1991 .....	1.65	0.27	0.84	2.76	1
1990 .....	1.74	0.31	1.03	3.07	1
1989 .....	1.71	0.31	0.95	2.96	1
1988 .....	1.75	0.33	0.95	3.02	2
1987 .....	1.78	0.36	0.97	3.11	2
1986 .....	1.87	0.34	0.95	3.16	2
1985 .....	1.82	0.32	1.05	3.19	1
1984 .....	1.86	0.30	1.03	3.19	2
1983 .....	1.93	0.33	1.07	3.33	2
1982 .....	1.93	0.30	1.04	3.27	2
1981 .....	1.95	0.31	1.20	3.47	1
1980 .....	1.96	0.31	1.20	3.46	1
1979 .....	1.88	0.28	1.17	3.33	3
1978 .....	1.80	0.28	1.18	3.25	2
1977 .....	1.78	0.27	1.26	3.31	2
Wyoming					
2006 .....	1.47	0.23	1.05	2.74	2
2005 .....	1.21	0.23	0.97	2.40	5
2004 .....	1.41	0.22	0.92	2.55	3
2003 .....	1.69	0.23	0.90	2.82	1
2002 .....	1.46	0.22	0.88	2.56	2
2001 .....	1.43	0.22	0.88	2.52	2
2000 .....	1.42	0.18	0.86	2.46	3
1999 .....	1.41	0.18	0.84	2.43	3
1998 .....	1.38	0.20	0.81	2.40	3
1997 .....	1.36	0.17	0.81	2.33	3

Decile values (1 = highest apply only to State-level data. Numbers may not sum because of rounding.

**Table 3.** Per capita ethanol consumption for States, census regions, and the United States, 1977-2006. [Gallons of ethanol, based on population age 14 and older] (Continued)

State or other Geographic area	Per capita consumption				U.S. decile for all beverages
	Beer	Wine	Spirits	All beverages	
1996 .....	1.37	0.16	0.81	2.34	3
1995 .....	1.34	0.16	0.80	2.29	4
1994 .....	1.42	0.18	0.83	2.43	3
1993 .....	1.40	0.19	0.86	2.45	3
1992 .....	1.44	0.20	0.91	2.56	3
1991 .....	1.45	0.20	0.90	2.56	3
1990 .....	1.48	0.22	0.93	2.63	3
1989 .....	1.35	0.22	0.82	2.38	6
1988 .....	1.39	0.23	0.83	2.46	6
1987 .....	1.46	0.24	0.86	2.56	5
1986 .....	1.46	0.26	0.92	2.64	5
1985 .....	1.56	0.25	1.03	2.84	3
1984 .....	1.58	0.22	1.05	2.86	4
1983 .....	1.66	0.22	1.09	2.98	4
1982 .....	1.80	0.24	1.21	3.25	2
1981 .....	1.91	0.24	1.27	3.42	2
1980 .....	1.85	0.24	1.32	3.42	2
1979 .....	1.86	0.22	1.30	3.38	2
1978 .....	1.82	0.22	1.36	3.41	2
1977 .....	1.79	0.21	1.32	3.31	2
Northeast region					
2006 .....	1.06	0.45	0.73	2.24	
2005 .....	1.05	0.43	0.72	2.20	
2004 .....	1.07	0.43	0.70	2.19	
2003 .....	1.07	0.41	0.68	2.17	
2002 .....	1.10	0.40	0.66	2.16	
2001 .....	1.10	0.38	0.64	2.12	
2000 .....	1.06	0.38	0.66	2.10	
1999 .....	1.05	0.38	0.63	2.06	
1998 .....	1.07	0.37	0.60	2.04	
1997 .....	1.06	0.36	0.63	2.06	
1996 .....	1.08	0.36	0.64	2.07	
1995 .....	1.09	0.36	0.64	2.09	
1994 .....	1.11	0.34	0.67	2.12	
1993 .....	1.13	0.34	0.68	2.15	
1992 .....	1.14	0.35	0.72	2.21	
1991 .....	1.19	0.34	0.73	2.26	
1990 .....	1.23	0.38	0.80	2.41	
1989 .....	1.22	0.39	0.84	2.44	
1988 .....	1.25	0.40	0.86	2.52	
1987 .....	1.25	0.43	0.91	2.60	
1986 .....	1.25	0.44	0.93	2.62	
1985 .....	1.25	0.43	0.98	2.66	
1984 .....	1.25	0.43	1.01	2.70	
1983 .....	1.31	0.43	1.03	2.76	
1982 .....	1.31	0.43	1.05	2.79	
1981 .....	1.31	0.41	1.07	2.80	
1980 .....	1.34	0.40	1.10	2.84	
1979 .....	1.30	0.38	1.09	2.77	
1978 .....	1.26	0.36	1.10	2.73	
1977 .....	1.25	0.34	1.10	2.69	

Decile values (1 = highest) apply only to State-level data. Numbers may not sum because of rounding.



**Table 3.** Per capita ethanol consumption for States, census regions, and the United States, 1977-2006. [Gallons of ethanol, based on population age 14 and older] (Continued)

State or other Geographic area	Per capita consumption				U.S. decile for all beverages
	Beer	Wine	Spirits	All beverages	
<b>Midwest region</b>					
2006 .....	1.26	0.28	0.72	2.26	
2005 .....	1.26	0.27	0.71	2.24	
2004 .....	1.27	0.26	0.67	2.20	
2003 .....	1.28	0.26	0.69	2.22	
2002 .....	1.30	0.24	0.65	2.20	
2001 .....	1.29	0.24	0.66	2.18	
2000 .....	1.29	0.23	0.66	2.18	
1999 .....	1.29	0.24	0.65	2.17	
1998 .....	1.28	0.23	0.63	2.14	
1997 .....	1.26	0.23	0.63	2.12	
1996 .....	1.27	0.23	0.62	2.12	
1995 .....	1.27	0.22	0.63	2.12	
1994 .....	1.30	0.22	0.63	2.14	
1993 .....	1.30	0.22	0.67	2.18	
1992 .....	1.31	0.23	0.68	2.21	
1991 .....	1.35	0.23	0.67	2.25	
1990 .....	1.38	0.26	0.74	2.37	
1989 .....	1.34	0.26	0.71	2.31	
1988 .....	1.36	0.28	0.74	2.38	
1987 .....	1.37	0.29	0.76	2.42	
1986 .....	1.37	0.30	0.78	2.44	
1985 .....	1.37	0.28	0.83	2.48	
1984 .....	1.39	0.27	0.84	2.50	
1983 .....	1.41	0.25	0.87	2.53	
1982 .....	1.42	0.27	0.88	2.56	
1981 .....	1.42	0.26	0.93	2.61	
1980 .....	1.42	0.24	0.96	2.63	
1979 .....	1.41	0.23	0.95	2.58	
1978 .....	1.35	0.22	0.96	2.53	
1977 .....	1.32	0.21	0.96	2.49	
<b>South region</b>					
2006 .....	1.26	0.30	0.67	2.23	
2005 .....	1.24	0.29	0.66	2.18	
2004 .....	1.27	0.28	0.64	2.19	
2003 .....	1.27	0.27	0.64	2.18	
2002 .....	1.29	0.26	0.62	2.17	
2001 .....	1.29	0.25	0.60	2.14	
2000 .....	1.30	0.25	0.61	2.16	
1999 .....	1.30	0.25	0.60	2.15	
1998 .....	1.28	0.24	0.60	2.12	
1997 .....	1.28	0.23	0.60	2.12	
1996 .....	1.29	0.24	0.61	2.14	
1995 .....	1.29	0.22	0.61	2.12	
1994 .....	1.31	0.22	0.64	2.16	
1993 .....	1.33	0.22	0.66	2.20	
1992 .....	1.33	0.23	0.69	2.26	
1991 .....	1.31	0.23	0.69	2.23	
1990 .....	1.36	0.26	0.74	2.36	
1989 .....	1.33	0.26	0.73	2.31	
1988 .....	1.33	0.27	0.74	2.34	
1987 .....	1.33	0.27	0.77	2.37	

Decile values (1 = highest) apply only to State-level data. Numbers may not sum because of rounding.

**Table 3.** Per capita ethanol consumption for States, census regions, and the United States, 1977-2006. [Gallons of ethanol, based on population age 14 and older] (Continued)

State or other Geographic area	Per capita consumption				U.S. decile for all beverages
	Beer	Wine	Spirits	All beverages	
1986 .....	1.35	0.28	0.79	2.42	
1985 .....	1.33	0.27	0.85	2.46	
1984 .....	1.34	0.27	0.90	2.51	
1983 .....	1.36	0.25	0.91	2.52	
1982 .....	1.37	0.23	0.95	2.55	
1981 .....	1.36	0.24	0.98	2.58	
1980 .....	1.31	0.23	0.98	2.51	
1979 .....	1.32	0.21	1.03	2.55	
1978 .....	1.29	0.20	1.03	2.52	
1977 .....	1.25	0.19	1.01	2.44	
West region					
2006 .....	1.14	0.49	0.75	2.38	
2005 .....	1.13	0.49	0.73	2.34	
2004 .....	1.15	0.47	0.71	2.33	
2003 .....	1.16	0.46	0.69	2.31	
2002 .....	1.18	0.44	0.67	2.29	
2001 .....	1.19	0.43	0.68	2.30	
2000 .....	1.18	0.43	0.67	2.29	
1999 .....	1.19	0.42	0.65	2.27	
1998 .....	1.19	0.42	0.65	2.25	
1997 .....	1.20	0.43	0.65	2.28	
1996 .....	1.21	0.43	0.67	2.30	
1995 .....	1.22	0.40	0.66	2.28	
1994 .....	1.20	0.41	0.70	2.31	
1993 .....	1.26	0.42	0.72	2.39	
1992 .....	1.33	0.45	0.76	2.54	
1991 .....	1.30	0.44	0.76	2.50	
1990 .....	1.37	0.50	0.84	2.71	
1989 .....	1.36	0.51	0.84	2.71	
1988 .....	1.37	0.57	0.87	2.80	
1987 .....	1.39	0.62	0.89	2.90	
1986 .....	1.40	0.65	0.92	2.98	
1985 .....	1.37	0.65	1.00	3.02	
1984 .....	1.41	0.61	1.04	3.05	
1983 .....	1.42	0.61	1.07	3.11	
1982 .....	1.45	0.60	1.11	3.15	
1981 .....	1.49	0.60	1.16	3.26	
1980 .....	1.48	0.59	1.20	3.26	
1979 .....	1.49	0.58	1.24	3.31	
1978 .....	1.43	0.56	1.27	3.26	
1977 .....	1.38	0.54	1.22	3.15	
U.S. total					
2006 .....	1.19	0.37	0.71	2.27	
2005 .....	1.18	0.35	0.70	2.23	
2004 .....	1.20	0.35	0.68	2.23	
2003 .....	1.21	0.34	0.67	2.22	
2002 .....	1.23	0.33	0.65	2.20	
2001 .....	1.23	0.31	0.64	2.18	
2000 .....	1.22	0.31	0.65	2.18	
1999 .....	1.23	0.31	0.63	2.16	
1998 .....	1.22	0.30	0.62	2.14	
1997 .....	1.22	0.30	0.62	2.14	

Decile values (1 = highest apply only to State-level data. Numbers may not sum because of rounding.

**Table 3.** Per capita ethanol consumption for States, census regions, and the United States, 1977-2006. [Gallons of ethanol, based on population age 14 and older] (Continued)

State or other Geographic area	Per capita consumption				U.S. decile for all beverages
	Beer	Wine	Spirits	All beverages	
1996 .....	1.23	0.30	0.63	2.16	
1995 .....	1.23	0.29	0.63	2.15	
1994 .....	1.25	0.28	0.65	2.18	
1993 .....	1.26	0.28	0.68	2.23	
1992 .....	1.29	0.30	0.71	2.30	
1991 .....	1.29	0.30	0.71	2.30	
1990 .....	1.34	0.33	0.77	2.45	
1989 .....	1.31	0.34	0.77	2.42	
1988 .....	1.33	0.36	0.79	2.48	
1987 .....	1.34	0.38	0.82	2.54	
1986 .....	1.34	0.39	0.84	2.58	
1985 .....	1.33	0.38	0.90	2.62	
1984 .....	1.35	0.37	0.94	2.65	
1983 .....	1.37	0.36	0.96	2.69	
1982 .....	1.38	0.36	0.98	2.72	
1981 .....	1.39	0.35	1.02	2.76	
1980 .....	1.38	0.34	1.04	2.76	
1979 .....	1.37	0.32	1.06	2.75	
1978 .....	1.33	0.31	1.07	2.71	
1977 .....	1.29	0.29	1.06	2.64	

Decile values (1 = highest) apply only to State-level data. Numbers may not sum because of rounding.