



National Institute on Alcohol Abuse and Alcoholism  
Division of Epidemiology and Prevention Research  
Alcohol Epidemiologic Data System

## **SURVEILLANCE REPORT #95**

### **APPARENT PER CAPITA ALCOHOL CONSUMPTION: NATIONAL, STATE, AND REGIONAL TRENDS, 1977–2010**

Robin A. LaVallee, M.P.P.  
Hsiao-ye Yi, Ph.D.

CSR, Incorporated<sup>1</sup>  
Suite 1000  
2107 Wilson Boulevard  
Arlington, VA 22201

**August 2012**

U.S. Department of Health and Human Services  
Public Health Service  
National Institutes of Health

<sup>1</sup> CSR, Incorporated operates the Alcohol Epidemiologic Data System (AEDS) under Contract No. HHSN267200800023C for the Division of Epidemiology and Prevention Research, National Institute on Alcohol Abuse and Alcoholism (NIAAA). Dr. Rosalind A. Breslow serves as NIAAA Project Officer on the contract.

(Blank page)

## HIGHLIGHTS

This surveillance report on 1977–2010 apparent per capita alcohol consumption in the United States is the 26th in a series of consumption reports produced annually by the Alcohol Epidemiologic Data System (AEDS) of the National Institute on Alcohol Abuse and Alcoholism (NIAAA). Findings are based on alcoholic beverage sales data, either collected directly by AEDS from the States or provided by beverage industry sources. Population data provided by the U.S. Census Bureau are used as denominators to calculate per capita rates. In this report, the 2000s population data used previously in this series were replaced with the reestimated intercensal population data that bridge the 2000 and 2010 censuses. This resulted in minor changes (mainly slight decreases) in calculated per capita consumption for the 2000s compared with prior reports in this series (see page 2 for details). The following are highlights from the current report, which updates consumption trends through 2010:

- In the United States, per capita consumption of ethanol from all alcoholic beverages combined in 2010 was 2.26 gallons, representing a 1.3 percent decrease from 2.29 gallons in 2009.
- Between 2009 and 2010, changes in overall per capita consumption of ethanol included increases in 19 States, decreases in 27 States and the District of Columbia, and no change in 4 States.
- Analysis of overall per capita alcohol consumption by census region between 2009 and 2010 indicated an increase of 0.4% in the Northeast and decreases of 1.7% in the Midwest, 1.4% in the South, and 2.1% in the West.
- Healthy People 2010 has set the national objective for reducing per capita alcohol consumption to no more than 1.96 gallons of ethanol. This objective was not met. The 2010 per capita consumption was 2.26, which represents an increase from the baseline of 2.14 gallons in 1997.
- Healthy People 2020 has set the national objective for per capita alcohol consumption at no more than 2.1 gallons. Per capita consumption would need to decrease by 0.7% each year for the next 10 years to achieve this goal.

## INTRODUCTION

This surveillance report on per capita consumption of alcohol in the United States is the 26th in a series of reports that examine alcohol consumption trends on a national, State, and regional basis. Like previous reports on per capita alcohol consumption, it is intended to provide updated alcohol information for policymakers, health care providers, researchers, and others concerned about alcohol issues.

Data presented in this report are related to one of the national objectives set in Healthy People 2010 (U.S. Department of Health and Human Services 2000) for alcohol consumption. This objective is to reduce the national per capita alcohol consumption level to no more than 1.96 gallons of ethanol by 2010

(National Center for Health Statistics 2008). Healthy People 2020 updates this objective to no more than 2.1 gallons (U.S. Department of Health and Human Services 2012).

The current report updates the 1977–2009 alcohol consumption trends (LaVallee and Yi 2011) with new data for 2010. Data are presented in three tables. The first one presents national data on trends in beer, wine, and spirits consumption, as well as on all alcoholic beverages combined. The second table presents data on alcohol consumption for individual States for 2010. States also are ranked in deciles according to per capita ethanol consumption. The third table presents data on consumption trends for each type of beverage and all beverages combined for the States as well as for the four regions defined by the U.S. Census Bureau: Northeast, Midwest, South, and West.

## DATA

### Alcohol Consumption Data

AEDS makes every effort to obtain alcoholic beverage sales data from all States and the District of Columbia because sales data more accurately reflect actual consumption of alcoholic beverages than do production and shipments data from beverage industry sources. For 2010, AEDS received complete beverage sales and/or tax receipts reports from 33 States for beer, 33 States for wine, and 27 States for spirits.<sup>1</sup> For the remaining States and the District of Columbia, shipments data from beverage industry sources (Beverage Information Group 2011*a, b, c*) were used for the numerator to calculate per capita consumption. Although sales and tax receipt data tend to provide slightly lower per capita estimates (about .01 to .02 points per capita), the mixed use of data from sales and shipments sources appears to have little effect on overall trends in per capita alcohol consumption (Campbell et al. 1994).

### Population Data

State population estimates for persons ages 14 and older were obtained from Internet releases by the U.S. Census Bureau (2011). These data are used as denominators to calculate the per capita consumption figures. To make the trend data more precise, AEDS revises data published in previous reports when the Census Bureau makes major revisions to its population estimates. In the current report, the 2000s population estimates used previously in

this series were replaced with the reestimated intercensal population data that bridge the 2000 and 2010 censuses (U.S. Census Bureau 2011). Because the new population estimates were generally higher than the old estimates for the second half of the decade, this revision resulted in slight decreases in calculated per capita ethanol consumption for those years.

## METHODS

### Conversion of Ethanol Content

AEDS uses an estimate of average ethanol content in the alcoholic beverages to convert the gallons of sold or shipped beer, wine, and spirits into gallons of ethanol (pure alcohol) before calculating per capita consumption estimates. The ethanol conversion coefficients (ECC, i.e., proportion of pure alcohol for each beverage type) are 0.045 for beer, 0.129 for wine, and 0.411 for spirits.

AEDS has considered changes in the alcoholic beverage market that may affect the ECCs used in the current report. For instance, the introduction of “light” beer, “light” wines, and coolers (both wine and spirits) may have slightly lowered the average ethanol content in some alcoholic beverages. Kling (1991, 1989) suggests that there were decreases in the ethanol content of spirits during the 1980s. However, such decreases may be offset by the increase in sales of drinks with higher ethanol content, such as premium brand liquors, fortified wines, malt liquors, and locally produced beers and ales (microbrews). “Ice” beers and “dry” beers, for example, both have higher ethanol content than either premium or light beers (M. Shanken Communications, Inc. 1994). Therefore, changes in the average net ethanol content across all beverages have probably been minimal and not large enough to alter the trends in overall per capita consumption.

Studies by Kerr and colleagues (2006*a, b*) estimated national average and State-specific ECCs for beer, wine, and spirits in each year.

---

<sup>1</sup> The following 36 States provided alcoholic beverage sales data for beer, wine, and/or, spirits for 2010: Alaska, Arizona, California, Colorado, Connecticut, Florida, Idaho, Indiana, Kansas, Kentucky, Louisiana, Maryland, Massachusetts, Michigan, Minnesota, Missouri, Montana, Nevada, New Hampshire, New Jersey, New Mexico, New York, North Carolina, North Dakota, Ohio, Oregon, Pennsylvania, South Dakota, Tennessee, Texas, Utah, Virginia, Washington, West Virginia, Wisconsin, Wyoming.

Their method derived ECCs for each beverage type based on three components of data: (1) market shares for subcategories within the beverage type (e.g., table wine, wine coolers, etc., within wine); (2) market shares for leading brands in each subcategory; and (3) ethanol contents of these leading brands. Their findings suggest that in 2002, the national average ethanol content was 0.0467 for beer, 0.1145 for wine, and 0.3690 for spirits. Their State-specific estimates indicate that ECCs for all beverage types varied by State and over time. AEDS compared per capita consumption estimates derived by Kerr and colleagues with data presented in this surveillance report. Results revealed that cross-State correlations between the two data sets are higher than 0.99 for all three beverage types. Similar patterns also were observed in national trends between the two sets of estimates, although some differences in absolute values existed and fluctuated over time. Given the fact that Kerr and colleagues applied their ECCs to the same AEDS beverage volume data to derive their per capita consumption estimates, it was concluded that consumption trends are mainly driven by beverage volumes rather than changes in the ECC estimates.

Because most of the analyses provided in this surveillance report are focused on consumption trends over time, and because of the time- and labor-intensive nature of estimating the ECC every year for each State, AEDS will continue to use the current fixed set of ECCs. However, we will monitor the market changes by conducting periodic analysis of the ECCs.

### **Population Denominator**

AEDS uses the population of persons ages 14 and older to calculate per capita consumption rates. Although age 14 is below the minimum legal age for the purchase of alcoholic beverages throughout the United States, most self-report surveys indicate that many 14-year-olds drink alcoholic beverages.

For example, data from the NIAAA 2001–2002 National Epidemiologic Survey on Alcohol and Related Conditions indicate that 12.2 percent of current drinkers ages 18 and older in the United States began drinking at age 15 or younger (AEDS 2004). Results from the Monitoring the Future survey in 2010 (Johnston et al. 2011) indicate that 29.3 percent of eighth graders (13- to 14-year-olds) reported past-year use of alcohol (i.e., beyond a few sips). Also, using data from the National Survey on Drug Use and Health in 2009, Chen and colleagues (2011) found the median age of initiation of alcohol use among 12- to 20-year-olds to be 14.

### **Limitations**

Individuals familiar with survey reports and other scientific literature often are accustomed to the presentation of significance tests, or confidence intervals, on any data comparisons or trends. However, because data presented in this report are based on total actual sales and/or shipments, no measures of statistical significance are provided. Nonetheless, it is important to note that these data are still only estimates and may be subject to reporting error and random fluctuation over time.

In addition to ECCs, many factors may result in inaccuracies in estimates of per capita alcohol consumption. For instance, these estimates in some States may be inflated by such factors as cross-border sales to buyers from neighboring States (e.g., in New Hampshire) or tourists' consumption of alcohol (e.g., in Washington D.C.). Other factors include: variation in State reporting practices for sales of alcoholic beverages; time delay between State taxation records and actual consumption; exclusion of alcohol contained in medications and foods; unrecorded legal home production; and illicit production, importation, and sales. These factors are discussed in detail in the latest AEDS data reference manual (DRM) on per capita alcohol consumption (Nephew et al. 2004). The DRM can be ordered on NIAAA's Web site <http://www.niaaa.nih.gov>.

## REFERENCES

- Alcohol Epidemiologic Data System (AEDS).  
Unpublished data from the 2001–2002 National Epidemiologic Survey on Alcohol and Related Conditions, National Institute on Alcohol Abuse and Alcoholism, 2004.
- Beverage Information Group. *Beer Handbook*, 2011.  
Norwalk, CT: Beverage Information Group, 2011a.
- Beverage Information Group. *Liquor Handbook*, 2011.  
Norwalk, CT: Beverage Information Group, 2011b.
- Beverage Information Group. *Wine Handbook*, 2011.  
Norwalk, CT: Beverage Information Group, 2011c.
- Campbell, K.E.; Clem, D.; and Williams, G.D. Technical report: 1986–91 per capita ethanol consumption trends using beverage industry shipments data compared to combined sales/tax receipt and shipments data. Working paper prepared by the Alcohol Epidemiologic Data System, NIAAA, Washington, DC, August 1994.
- Chen, C.M.; Yi, H.; and Faden, V.B. *Surveillance Report #91: Trends in Underage Drinking in the United States, 1991–2009*. Rockville, MD: NIAAA, Division of Epidemiology and Prevention Research, Alcohol Epidemiologic Data System, March 2011.
- Hyman, M.; Zimmerman, M.; Gurioli, C.; and Helrich, A. *Drinkers, Drinking and Alcohol-Related Mortality and Hospitalizations: A Statistical Compendium, 1980 Edition*. New Brunswick, NJ: Rutgers University, 1980.
- Johnston, L.D.; O'Malley, P.M.; Bachman, J.G.; and Schulenberg, J.E. *Monitoring the Future, National Results on Adolescent Drug Use: Overview of Key Findings, 2010*. Ann Arbor: Institute for Social Research, The University of Michigan, 2011.
- Kerr, W.C.; Greenfield, T.K.; Tujague, J.; and Brown, S.E. The alcohol content of wine consumed in the US and per capita consumption: New estimates reveal different trends. *Alcoholism: Clinical and Experimental Research* 30(3):516–522, 2006a.
- Kerr, W.C.; Greenfield, T.K.; and Tujague, J. Estimates of the mean alcohol concentration of the spirits, wine, and beer sold in the United States and per capita consumption: 1950 to 2002. *Alcoholism: Clinical and Experimental Research* 30(9): 1583–1591, 2006b.
- Kling, W. Errata: Measurement of ethanol consumed in distilled spirits. *Journal of Studies on Alcohol* 52:503–504, 1991.
- Kling, W. Measurement of ethanol consumed in distilled spirits. *Journal of Studies on Alcohol* 50:456–460, 1989.
- LaVallee, R.A. and Yi, H. *Surveillance Report #92: Apparent Per Capita Alcohol Consumption: National, State, and Regional Trends, 1977–2009*. Rockville, MD: NIAAA, Division of Epidemiology and Prevention Research, Alcohol Epidemiologic Data System, August 2011.
- M. Shanken Communications, Inc. *The U.S. Beer Market: Impact Databank Review and Forecast, 1994 Edition*. New York: Shanken, 1994.
- National Center for Health Statistics. (2008). *Data2010: The Healthy People 2010 Database* (May, 2008 Edition) [Interactive database]. Available from National Center for Health Statistics website, <http://www.cdc.gov/nchs>.
- Nephew, T.M.; Williams, G.D.; Yi, H.; Hoy, A.K.; Stinson, F.S.; and Dufour, M. *Surveillance Report #59: Apparent Per Capita Alcohol Consumption: National, State, and Regional Trends, 1977–2000*. Rockville, MD: NIAAA, Division of Biometry and Epidemiology, Alcohol Epidemiologic Data System, September 2003.
- Nephew, T.M.; Yi, H.; Williams, G.D.; Stinson, F.S.; and Dufour, M.C. *Alcohol Epidemiologic Data Reference Manual, Vol. 1, 4th Edition, U.S. Apparent Consumption of Alcoholic Beverages Based on State Sales, Taxation, or Receipt Data*. NIH Publication No. 04-5563. Bethesda, MD: National Institutes of Health, National Institute on Alcohol Abuse and Alcoholism, Alcohol Epidemiologic Data System, June 2004.
- U.S. Census Bureau, Population Division. *Estimates and Projections Area Documentation: State and County Total Population Estimates*, Washington, D.C.: U.S. Census Bureau, Internet release, December 2002.
- U.S. Census Bureau, Population Division. *Intercensal Estimates of the Resident Population by Single Year of Age and Sex for States and the United States: April 1, 2000 to July 1, 2010* (SC-EST00INT-AGESEX). Washington, D.C.: U.S. Census Bureau, Internet release, September 2011.
- U.S. Department of Health and Human Services. *Healthy People 2010. 2nd Ed. With Understanding and Improving Health and Objectives for Improving Health*. 2 vols. Washington, DC: U.S. Government Printing Office, November 2000.
- U.S. Department of Health and Human Services, Office of Disease Prevention and Health Promotion. *Healthy People 2020*. Washington, DC. Available at: <http://www.healthypeople.gov/2020/topicsobjectives2020/objectiveslist.aspx?topicId=40>. Accessed July 25, 2012.

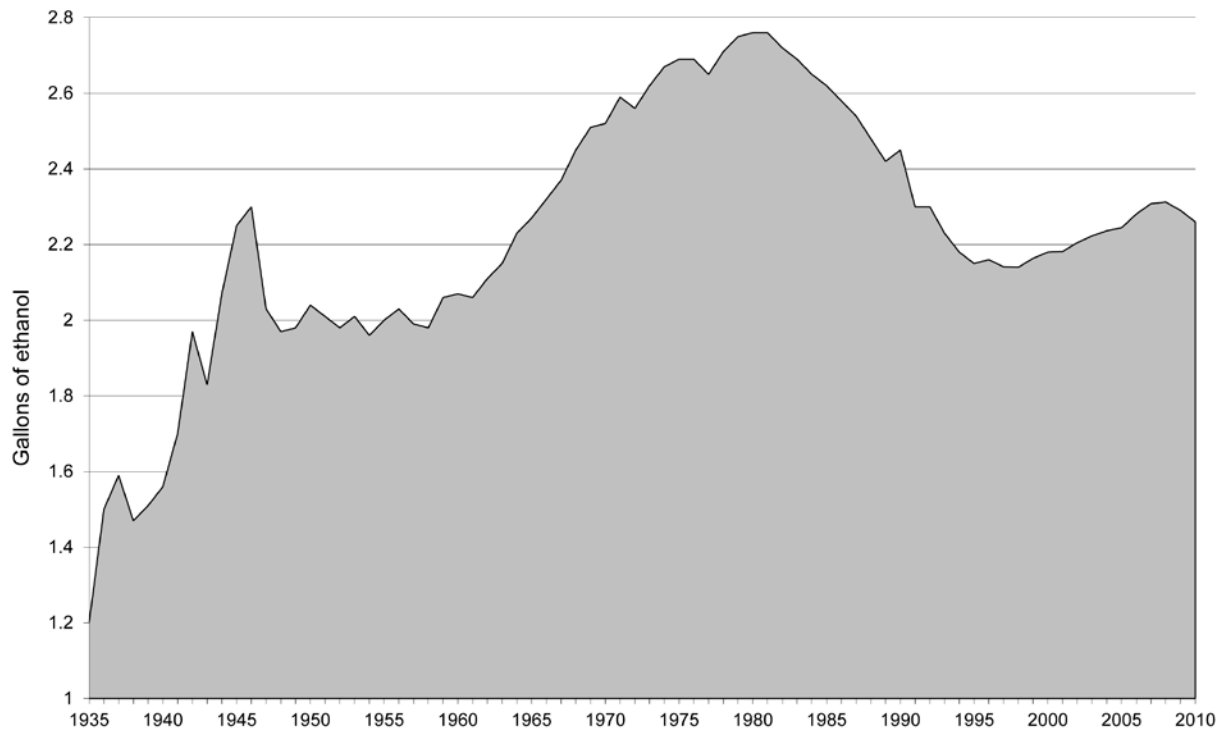
## List of Figures

	Page
Figure 1 Total per capita ethanol consumption, United States, 1935–2010 .....	6
Figure 2 Per capita ethanol consumption by beverage type, United States, 1977–2010 .....	6
Figure 3 Percent change in per capita ethanol consumption, United States, 1977–2010 .....	7
Figure 4 Total per capita consumption of gallons of ethanol by State, United States, 2010 .....	8
Figure 5 Percentage change in total per capita ethanol consumption by State, United States, 2009–2010 .....	8
Figure 6 Total per capita ethanol consumption by region, United States, 1977–2010 .....	9
Figure 7 Per capita ethanol consumption from beer by region, United States, 1977–2010 .....	9
Figure 8 Per capita ethanol consumption from wine by region, United States, 1977–2010 .....	10
Figure 9 Per capita ethanol consumption from spirits by region, United States, 1977–2010 .....	10

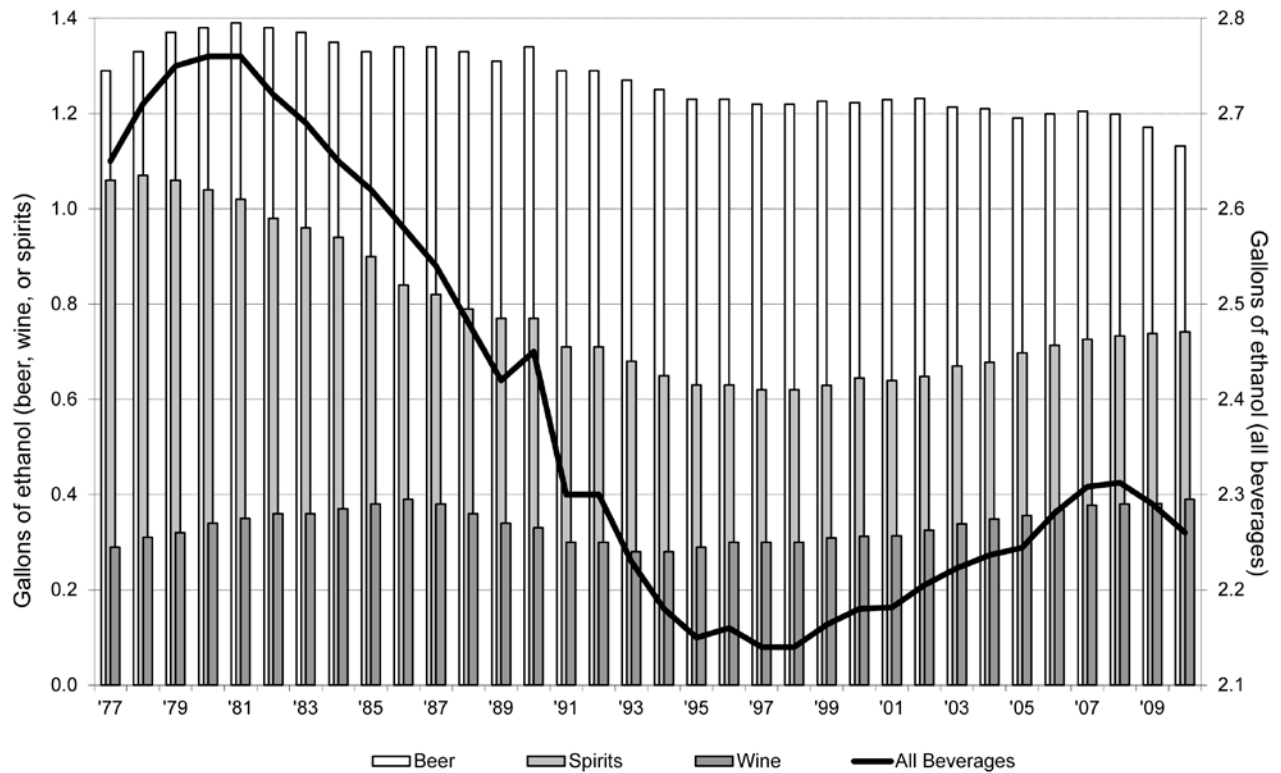
## List of Tables

	Page
Table 1 Apparent per capita ethanol consumption, United States, 1850–2010 .....	11
Table 2 Apparent alcohol consumption for States, census regions, and the United States, 2010 .....	13
Table 3 Per capita ethanol consumption for States, census regions, and the United States, 1977–2010 .....	15

**Figure 1.** Total per capita ethanol consumption, United States, 1935–2010

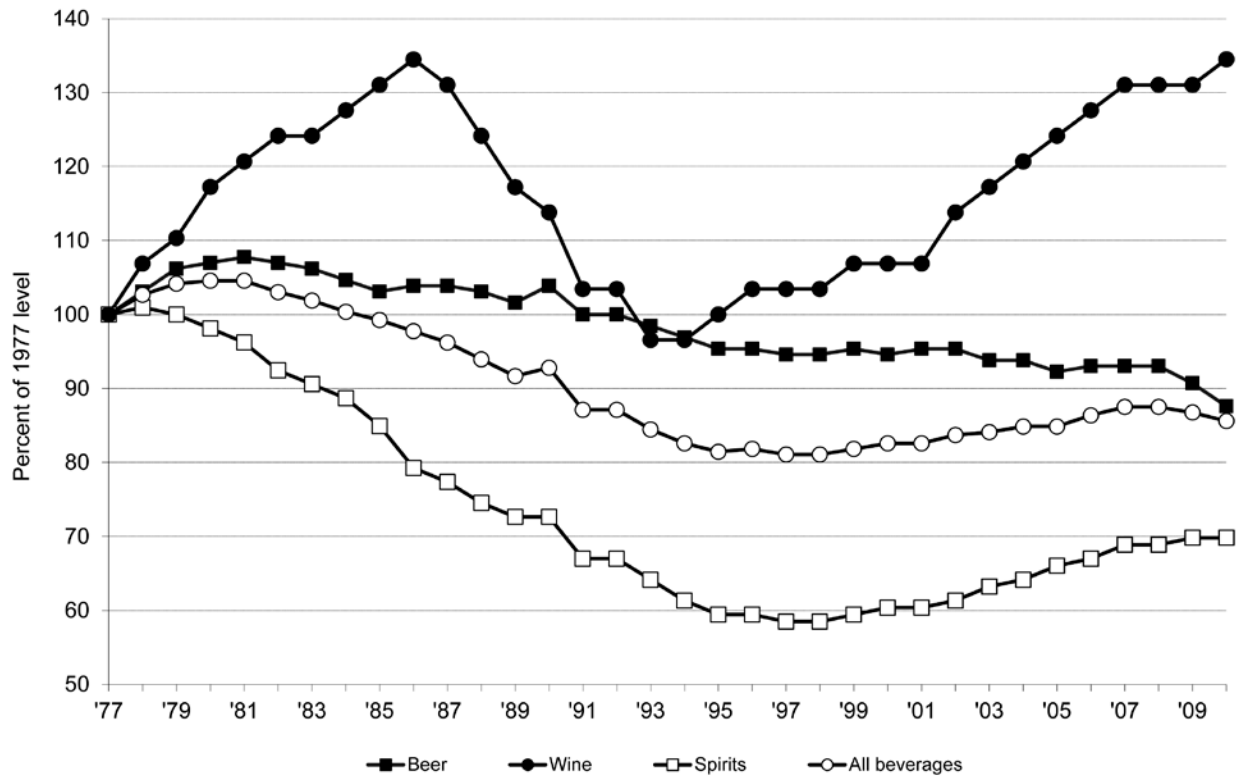


**Figure 2.** Per capita ethanol consumption by beverage type, United States, 1977–2010

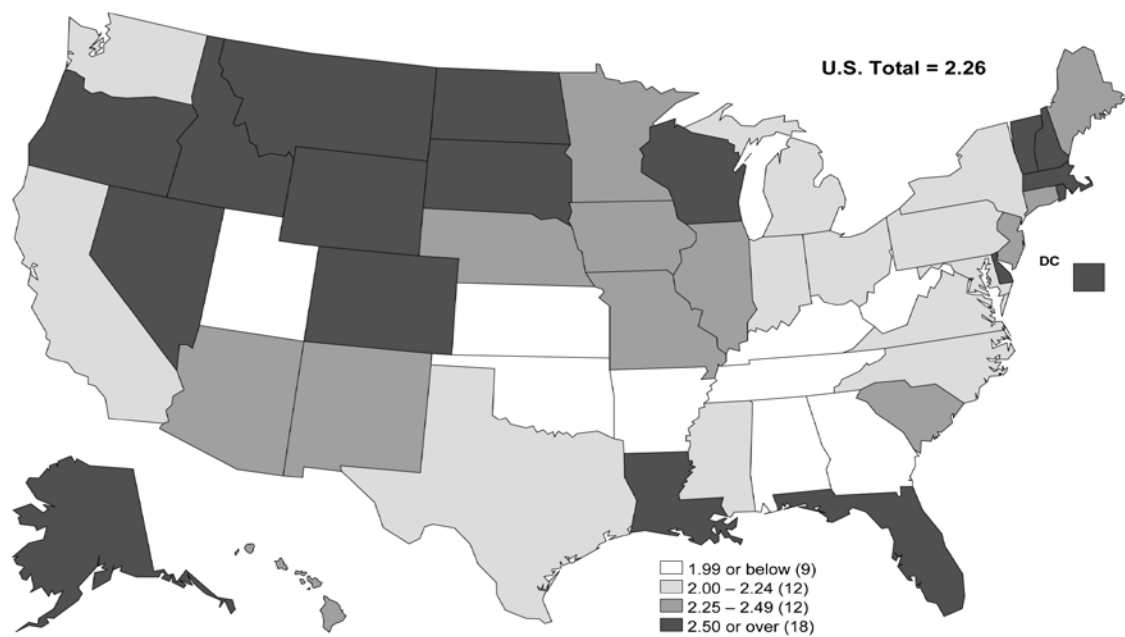




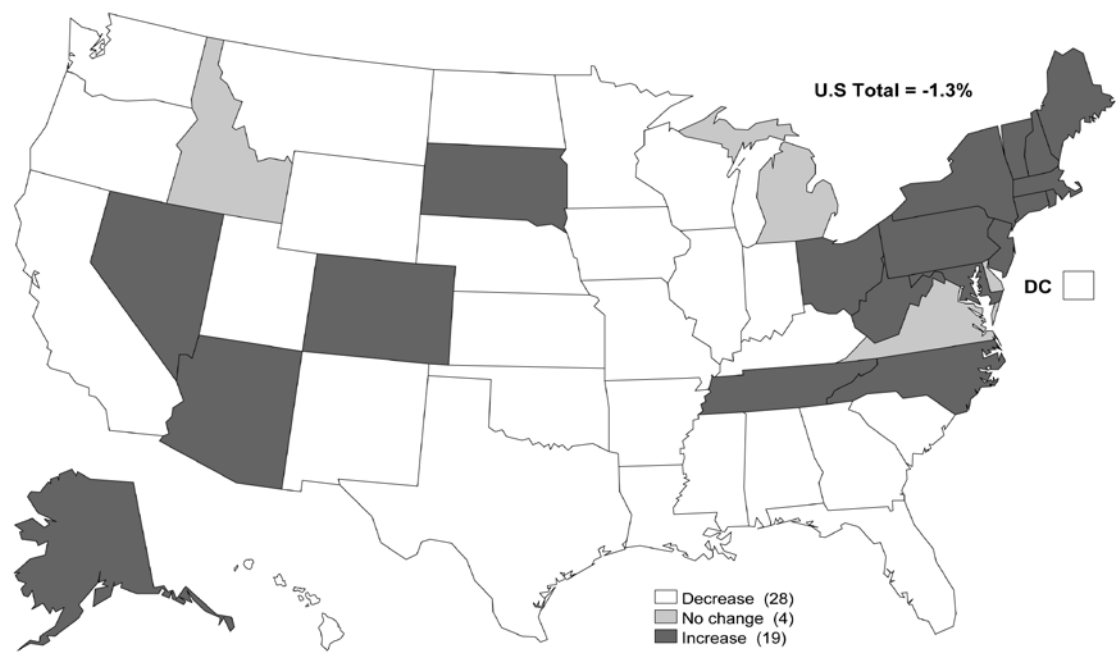
**Figure 3.** Percent change in per capita ethanol consumption, United States, 1977–2010



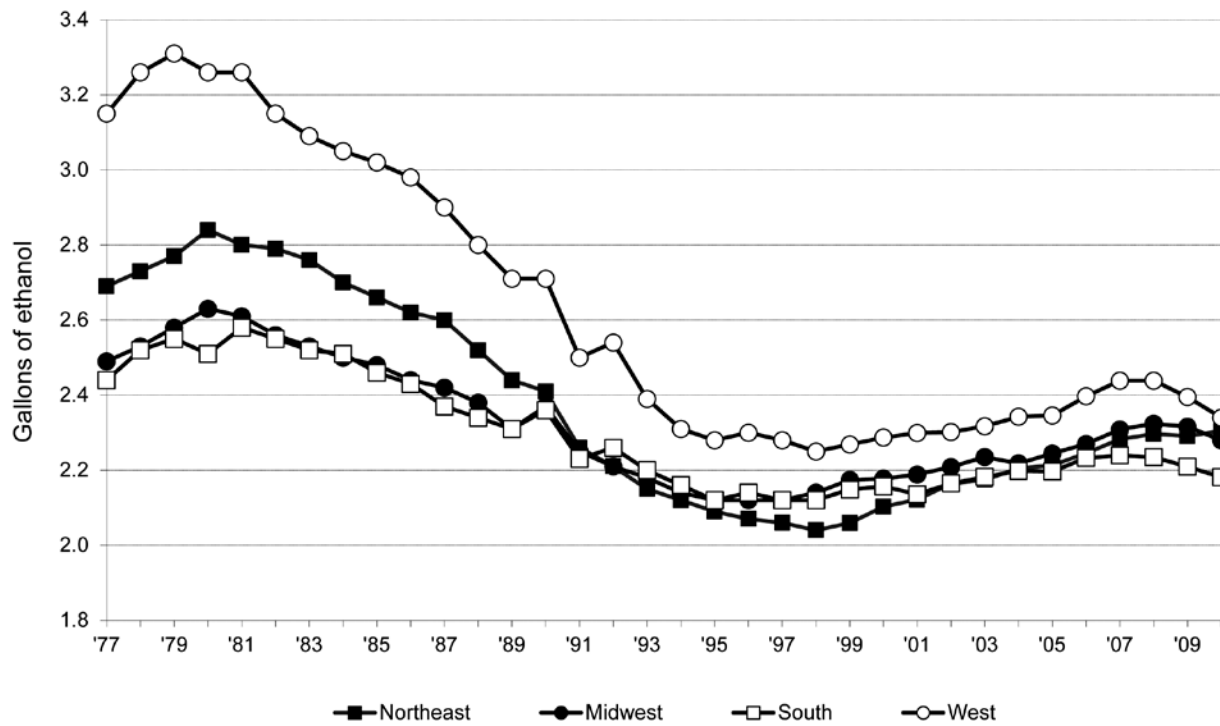
**Figure 4.** Total per capita consumption of gallons of ethanol by State, United States, 2010.



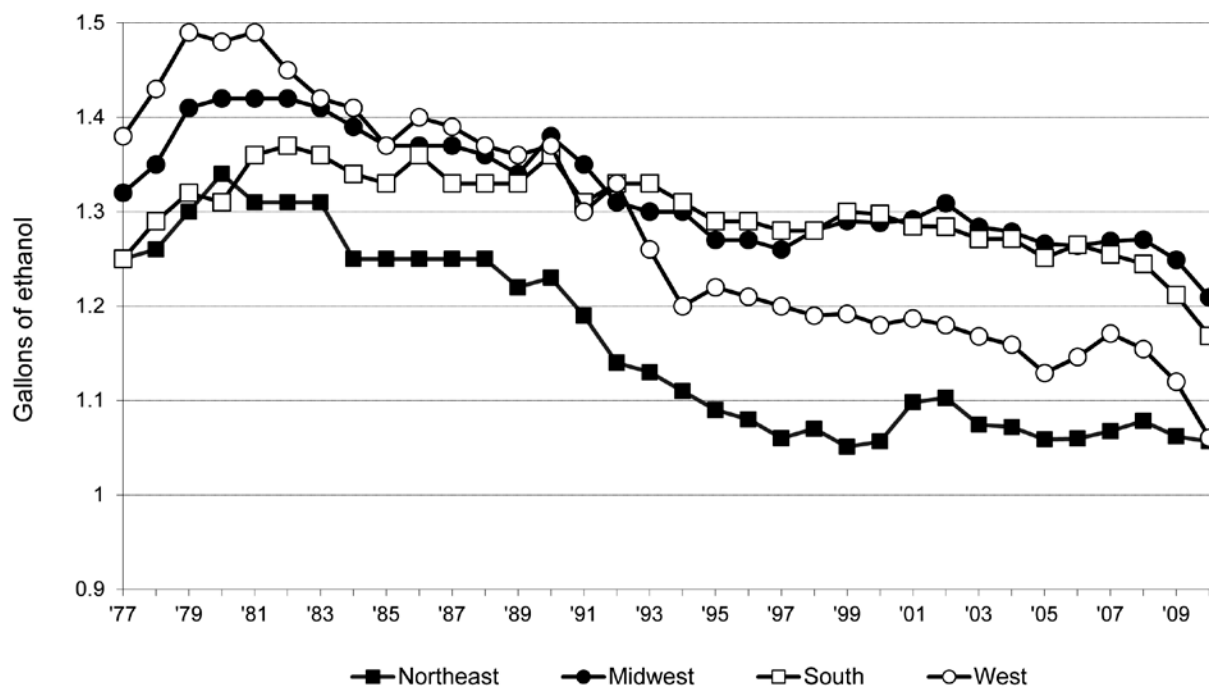
**Figure 5.** Percentage change in total per capita ethanol consumption by State, United States, 2009–2010.



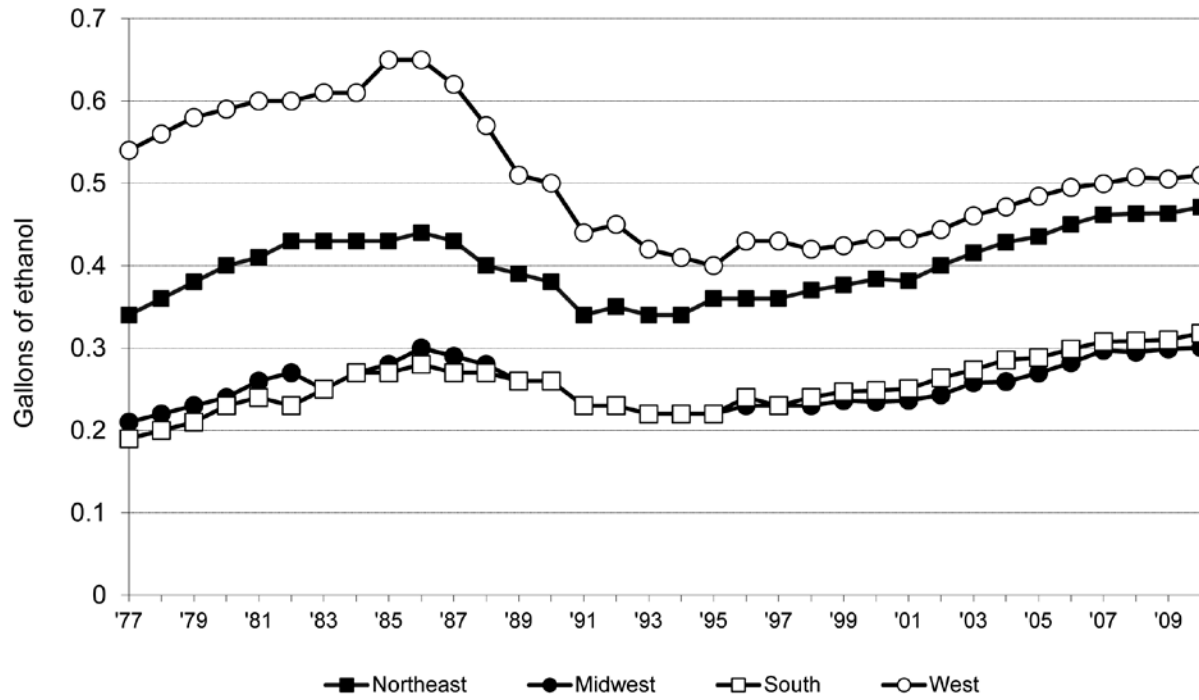
**Figure 6.** Total per capita ethanol consumption by region, United States, 1977–2010



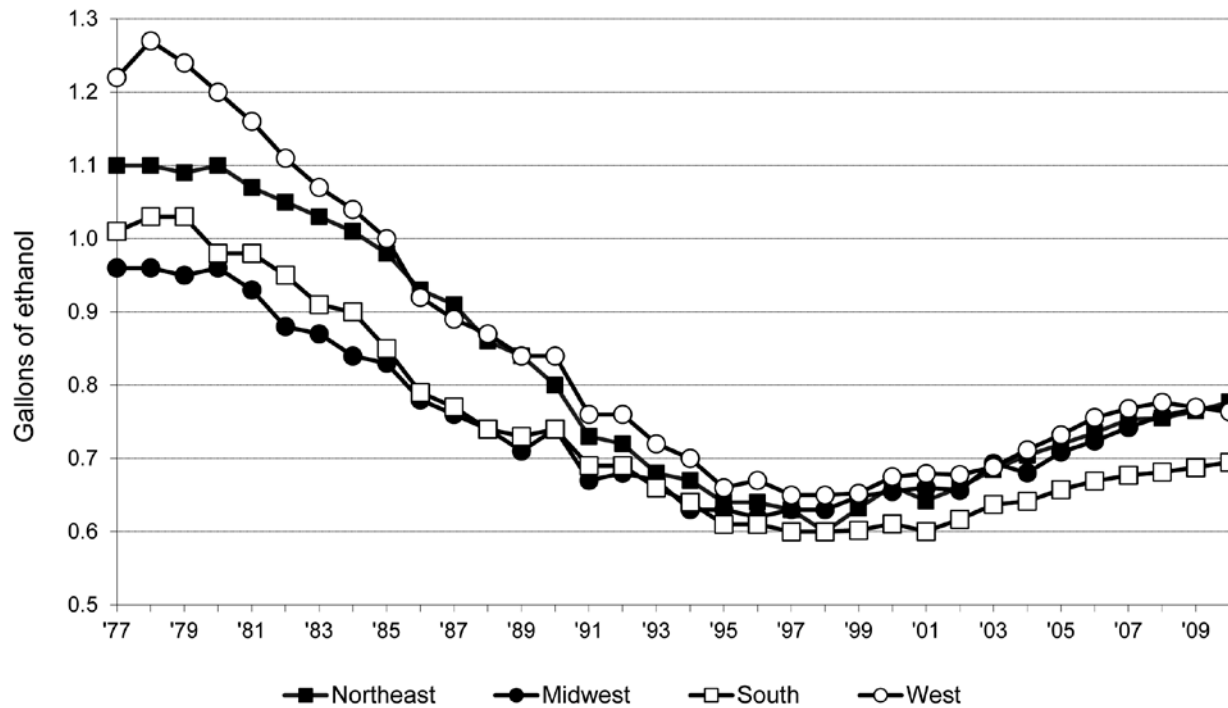
**Figure 7.** Per capita ethanol consumption from beer by region, United States, 1977–2010



**Figure 8.** Per capita ethanol consumption from wine by region, United States, 1977–2010



**Figure 9.** Per capital ethanol consumption from spirits by region, United States, 1977–2010



**Table 1.** Apparent per capita ethanol consumption, United States, 1850–2010. [Gallons of ethanol, based on population age 15 and older prior to 1970 and on population age 14 and older thereafter]

Year	Beer	Wine	Spirits	All beverages
2010 .....	1.13	0.39	0.74	2.26
2009 .....	1.17	0.38	0.74	2.29
2008 .....	1.20	0.38	0.73	2.31
2007 .....	1.20	0.38	0.73	2.31
2006 .....	1.20	0.37	0.71	2.28
2005 .....	1.19	0.36	0.70	2.24
2004 .....	1.21	0.35	0.68	2.24
2003 .....	1.21	0.34	0.67	2.22
2002 .....	1.23	0.33	0.65	2.21
2001 .....	1.23	0.31	0.64	2.18
2000 .....	1.22	0.31	0.64	2.18
1999 .....	1.23	0.31	0.63	2.16
1998 .....	1.22	0.30	0.62	2.14
1997 .....	1.22	0.30	0.62	2.14
1996 .....	1.23	0.30	0.63	2.16
1995 .....	1.23	0.29	0.63	2.15
1994 .....	1.25	0.28	0.65	2.18
1993 .....	1.26	0.28	0.68	2.23
1992 .....	1.29	0.30	0.71	2.30
1991 .....	1.29	0.30	0.71	2.30
1990 .....	1.34	0.33	0.77	2.45
1989 .....	1.31	0.34	0.77	2.42
1988 .....	1.33	0.36	0.79	2.48
1987 .....	1.34	0.38	0.82	2.54
1986 .....	1.34	0.39	0.84	2.58
1985 .....	1.33	0.38	0.90	2.62
1984 .....	1.35	0.37	0.94	2.65
1983 .....	1.37	0.36	0.96	2.69
1982 .....	1.38	0.36	0.98	2.72
1981 .....	1.39	0.35	1.02	2.76
1980 .....	1.38	0.34	1.04	2.76
1979 .....	1.37	0.32	1.06	2.75
1978 .....	1.33	0.31	1.07	2.71
1977 .....	1.29	0.29	1.06	2.64
1976 .....	1.27	0.32	1.10	2.69
1975 .....	1.26	0.32	1.11	2.69
1974 .....	1.25	0.31	1.11	2.67
1973 .....	1.20	0.31	1.10	2.62
1972 .....	1.17	0.30	1.09	2.56
1971 .....	1.15	0.31	1.12	2.59
1970 .....	1.14	0.27	1.11	2.52
1969 .....	1.12	0.26	1.13	2.51
1968 .....	1.09	0.26	1.10	2.45
1967 .....	1.07	0.25	1.05	2.37
1966 .....	1.06	0.24	1.02	2.32
1965 .....	1.04	0.24	0.99	2.27
1964 .....	1.04	0.24	0.95	2.23
1963 .....	1.01	0.23	0.91	2.15
1962 .....	0.99	0.22	0.90	2.11
1961 .....	0.97	0.23	0.86	2.06
1960 .....	0.99	0.22	0.86	2.07
1959 .....	1.00	0.22	0.84	2.06

Numbers may not sum because of rounding.

**Table 1.** Apparent per capita ethanol consumption, United States, 1850–2010. [Gallons of ethanol, based on population age 15 and older prior to 1970 and on population age 14 and older thereafter] (Continued)

Year	Beer	Wine	Spirits	All beverages
1958 .....	0.96	0.22	0.80	1.98
1957 .....	0.97	0.22	0.80	1.99
1956 .....	1.00	0.22	0.81	2.03
1955 .....	1.01	0.22	0.77	2.00
1954 .....	1.01	0.21	0.74	1.96
1953 .....	1.04	0.20	0.77	2.01
1952 .....	1.04	0.21	0.73	1.98
1951 .....	1.03	0.20	0.78	2.01
1950 .....	1.04	0.23	0.77	2.04
1949 .....	1.06	0.22	0.70	1.98
1948 .....	1.07	0.20	0.70	1.97
1947 .....	1.11	0.16	0.76	2.03
1946 .....	1.07	0.24	0.99	2.30
1945 .....	1.17	0.20	0.88	2.25
1944 .....	1.13	0.18	0.76	2.07
1943 .....	1.00	0.17	0.66	1.83
1942 .....	0.90	0.22	0.85	1.97
1941 .....	0.81	0.18	0.71	1.70
1940 .....	0.73	0.16	0.67	1.56
1939 .....	0.75	0.14	0.62	1.51
1938 .....	0.75	0.13	0.59	1.47
1937 .....	0.82	0.13	0.64	1.59
1936 .....	0.79	0.12	0.59	1.50
1935 .....	0.68	0.09	0.43	1.20
1934 .....	0.61	0.07	0.29	0.97
(Prohibition)				
1916–1919.....	1.08	0.12	0.76	1.96
1911–1915.....	1.48	0.14	0.94	2.56
1906–1910.....	1.47	0.17	0.96	2.60
1901–1905.....	1.31	0.13	0.95	2.39
1896–1900.....	1.19	0.10	0.77	2.06
1891–1895.....	1.17	0.11	0.95	2.23
1881–1890.....	0.90	0.14	0.95	1.99
1871–1880.....	0.56	0.14	1.02	1.72
1870 .....	0.44	0.10	1.53	2.07
1860 .....	0.27	0.10	2.16	2.53
1850 .....	0.14	0.08	1.88	2.10

Numbers may not sum because of rounding.

Note: Data prior to 1977 are from: Hyman, M.; Zimmerman, M.; Gurioli, C.; and Helrich, A. *Drinkers, Drinking and Alcohol-Related Mortality and Hospitalizations: A Statistical Compendium, 1980 edition*. New Brunswick, NJ: Rutgers University, 1980.

**Table 2.** Apparent alcohol consumption for States, census regions, and the United States, 2010. [Volume and ethanol in thousands of gallons, per capita ethanol consumption in gallons, based on population age 14 and older]

State or other geographic area	Beer			Wine			Spirits			All beverages		
	Volume	Ethanol	Per capita	Volume	Ethanol	Per capita	Volume	Ethanol	Per capita	Ethanol	Per capita	U.S. decile
Alabama .....	100,935	4,542	1.16	6,931	894	0.23	5,499	2,260	0.58	7,696	1.97	9
Alaska .....	15,476	696	1.23	2,422	312	0.55	1,732	712	1.25	1,721	3.03	1
Arizona .....	140,015	6,301	1.23	16,269	2,099	0.41	9,492	3,901	0.76	12,301	2.39	5
Arkansas .....	54,855	2,468	1.04	3,090	399	0.17	3,425	1,408	0.59	4,275	1.81	10
California .....	651,673	29,325	0.97	129,752	16,738	0.55	51,950	21,351	0.71	67,415	2.23	7
Colorado .....	110,403	4,968	1.22	15,100	1,948	0.48	10,088	4,146	1.01	11,062	2.71	2
Connecticut .....	57,770	2,600	0.88	13,878	1,790	0.60	6,293	2,586	0.87	6,976	2.36	5
Delaware .....	21,353	961	1.30	3,233	417	0.56	2,232	917	1.24	2,295	3.09	1
Dist. of Columb. ....	14,243	641	1.22	4,053	523	1.00	2,074	852	1.62	2,016	3.84	1
Florida .....	394,140	17,736	1.12	58,087	7,493	0.47	34,875	14,334	0.91	39,563	2.51	4
Georgia .....	184,230	8,290	1.07	14,955	1,929	0.25	12,459	5,121	0.66	15,340	1.97	9
Hawaii .....	31,028	1,396	1.24	4,518	583	0.52	1,968	809	0.72	2,788	2.47	4
Idaho .....	29,032	1,306	1.06	8,617	1,112	0.90	2,148	883	0.72	3,301	2.67	3
Illinois .....	279,293	12,568	1.20	32,079	4,138	0.40	18,910	7,772	0.74	24,478	2.34	6
Indiana .....	119,816	5,392	1.03	10,624	1,370	0.26	9,497	3,903	0.74	10,665	2.03	8
Iowa .....	75,848	3,413	1.37	3,504	452	0.18	4,442	1,826	0.73	5,691	2.29	6
Kansas .....	57,643	2,594	1.13	2,434	314	0.14	3,796	1,560	0.68	4,468	1.95	9
Kentucky .....	74,734	3,363	0.95	4,987	643	0.18	5,675	2,332	0.66	6,339	1.78	10
Louisiana .....	115,223	5,185	1.41	8,117	1,047	0.28	7,505	3,085	0.84	9,317	2.53	3
Maine .....	30,668	1,380	1.23	3,617	467	0.42	2,302	946	0.84	2,793	2.49	4
Maryland .....	99,474	4,476	0.94	13,934	1,798	0.38	10,246	4,211	0.89	10,485	2.21	7
Massachusetts .....	126,541	5,694	1.04	26,297	3,392	0.62	11,254	4,625	0.84	13,712	2.50	4
Michigan .....	196,594	8,847	1.09	20,682	2,668	0.33	16,249	6,678	0.82	18,193	2.24	6
Minnesota .....	105,975	4,769	1.10	11,121	1,435	0.33	10,355	4,256	0.99	10,459	2.42	5
Mississippi .....	72,518	3,263	1.37	2,089	269	0.11	4,080	1,677	0.70	5,210	2.18	8
Missouri .....	138,078	6,214	1.27	12,266	1,582	0.32	9,699	3,986	0.81	11,782	2.41	5
Montana .....	30,051	1,352	1.65	2,195	283	0.35	1,750	719	0.88	2,355	2.88	2
Nebraska .....	46,688	2,101	1.43	2,334	301	0.20	2,435	1,001	0.68	3,403	2.31	6
Nevada .....	72,467	3,261	1.49	10,192	1,315	0.60	6,451	2,651	1.21	7,227	3.30	1
New Hampshire .....	42,863	1,929	1.75	7,223	932	0.85	4,955	2,037	1.85	4,897	4.44	1

Decile values (1 = highest) apply only to State-level data. Numbers may not sum because of rounding.

**Table 2.** Apparent alcohol consumption for States, census regions, and the United States, 2010. [Volume and ethanol in thousands of gallons, per capita ethanol consumption in gallons, based on population age 14 and older] (Continued)

State or other geographic area	Beer			Wine			Spirits			All beverages		
	Volume	Ethanol	Per capita	Volume	Ethanol	Per capita	Volume	Ethanol	Per capita	Ethanol	Per capita	U.S. decile
New Jersey .....	147,507	6,638	0.92	32,013	4,130	0.57	15,178	6,238	0.86	17,006	2.35	5
New Mexico .....	45,422	2,044	1.23	4,026	519	0.31	2,974	1,222	0.74	3,786	2.28	6
New York .....	319,177	14,363	0.89	60,477	7,802	0.48	27,867	11,453	0.71	33,618	2.09	8
North Carolina ..	186,673	8,400	1.08	21,274	2,744	0.35	10,852	4,460	0.57	15,605	2.00	9
North Dakota ..	18,483	832	1.49	1,088	140	0.25	1,616	664	1.19	1,636	2.93	2
Ohio .....	271,228	12,205	1.29	18,164	2,343	0.25	10,980	4,513	0.48	19,061	2.02	8
Oklahoma .....	77,715	3,497	1.15	4,288	553	0.18	4,292	1,764	0.58	5,814	1.92	9
Oregon .....	83,678	3,766	1.19	12,029	1,552	0.49	6,395	2,628	0.83	7,946	2.51	4
Pennsylvania ..	317,858	14,304	1.35	18,234	2,352	0.22	16,227	6,669	0.63	23,325	2.20	7
Rhode Island ..	22,050	992	1.12	3,648	471	0.53	2,002	823	0.93	2,286	2.58	3
South Carolina	109,553	4,930	1.30	7,131	920	0.24	7,102	2,919	0.77	8,769	2.31	6
South Dakota ..	22,275	1,002	1.52	1,238	160	0.24	1,475	606	0.92	1,768	2.69	3
Tennessee .....	119,979	5,399	1.04	9,064	1,169	0.22	7,771	3,194	0.61	9,762	1.88	10
Texas .....	596,235	26,831	1.35	44,399	5,727	0.29	28,517	11,720	0.59	44,278	2.23	7
Utah .....	32,243	1,451	0.70	2,826	365	0.18	2,397	985	0.47	2,801	1.35	10
Vermont .....	16,223	730	1.38	2,673	345	0.65	918	377	0.71	1,452	2.74	2
Virginia .....	158,653	7,139	1.08	22,531	2,907	0.44	9,469	3,892	0.59	13,938	2.11	8
Washington .....	118,823	5,347	0.97	22,234	2,868	0.52	9,768	4,014	0.73	12,230	2.21	7
West Virginia ..	42,682	1,921	1.23	1,797	232	0.15	1,683	692	0.44	2,844	1.83	10
Wisconsin .....	135,374	6,092	1.31	11,707	1,510	0.32	12,787	5,256	1.13	12,858	2.76	2
Wyoming .....	13,506	608	1.33	776	100	0.22	1,185	487	1.06	1,195	2.61	3
<i>Regions</i>												
Northeast .....	1,080,657	48,630	1.06	168,059	21,680	0.47	86,996	35,755	0.78	106,065	2.30	
Midwest .....	1,467,295	66,028	1.21	127,241	16,414	0.30	102,241	42,021	0.77	124,463	2.28	
South .....	2,423,196	109,044	1.17	229,961	29,665	0.32	157,756	64,838	0.69	203,547	2.18	
West .....	1,373,817	61,822	1.06	188,077	24,262	0.42	108,297	44,510	0.76	130,594	2.24	
U.S. total .....	6,344,965	285,523	1.13	713,337	92,021	0.36	455,291	187,125	0.74	564,669	2.24	

Decile values (1 = highest) apply only to State-level data. Numbers may not sum because of rounding.



Table 3. Per capita ethanol consumption for States, census regions, and the United States, 1977–2010. [Gallons of ethanol, based on population age 14 and older] (Continued)

State or other geographic area	Per capita consumption				U.S. decile for all beverages
	Beer	Wine	Spirits	All beverages	
Alabama					
2010 .....	1.16	0.23	0.58	1.97	9
2009 .....	1.18	0.22	0.57	1.98	9
2008 .....	1.22	0.22	0.57	2.01	9
2007 .....	1.23	0.22	0.55	1.99	9
2006 .....	1.21	0.21	0.54	1.95	9
2005 .....	1.17	0.20	0.53	1.91	9
2004 .....	1.19	0.20	0.52	1.91	9
2003 .....	1.19	0.19	0.52	1.90	9
2002 .....	1.18	0.21	0.54	1.92	9
2001 .....	1.16	0.17	0.53	1.86	9
2000 .....	1.19	0.18	0.51	1.88	9
1999 .....	1.18	0.17	0.51	1.87	9
1998 .....	1.16	0.17	0.51	1.85	9
1997 .....	1.14	0.15	0.52	1.81	9
1996 .....	1.17	0.15	0.53	1.86	9
1995 .....	1.14	0.15	0.53	1.81	9
1994 .....	1.16	0.17	0.54	1.87	9
1993 .....	1.14	0.17	0.56	1.86	9
1992 .....	1.02	0.19	0.59	1.79	10
1991 .....	1.00	0.17	0.59	1.76	10
1990 .....	1.12	0.18	0.61	1.92	9
1989 .....	1.10	0.17	0.60	1.87	9
1988 .....	1.10	0.18	0.61	1.89	9
1987 .....	1.10	0.18	0.61	1.89	9
1986 .....	1.09	0.18	0.64	1.90	9
1985 .....	1.06	0.17	0.67	1.90	9
1984 .....	1.02	0.19	0.69	1.90	10
1983 .....	1.01	0.17	0.71	1.89	10
1982 .....	1.00	0.18	0.72	1.89	10
1981 .....	1.00	0.19	0.73	1.92	10
1980 .....	0.96	0.16	0.74	1.86	10
1979 .....	0.98	0.12	0.84	1.94	10
1978 .....	0.98	0.12	0.88	1.97	9
1977 .....	0.99	0.13	0.84	1.96	9
Alaska					
2010 .....	1.23	0.55	1.25	3.03	1
2009 .....	1.31	0.54	1.16	3.02	1
2008 .....	1.20	0.49	1.09	2.77	2
2007 .....	1.13	0.44	1.07	2.64	3
2006 .....	1.25	0.47	1.03	2.75	2
2005 .....	1.23	0.43	0.98	2.64	2
2004 .....	1.31	0.44	0.95	2.71	2
2003 .....	1.27	0.37	0.78	2.42	4
2002 .....	1.35	0.42	1.08	2.85	1
2001 .....	1.33	0.40	0.97	2.70	2
2000 .....	1.34	0.37	0.92	2.63	2
1999 .....	1.45	0.40	0.98	2.82	1
1998 .....	1.37	0.39	0.98	2.74	1
1997 .....	1.31	0.36	0.88	2.56	2

Decile values (1 = highest) apply only to State-level data. Numbers may not sum because of rounding.

Table 3. Per capita ethanol consumption for States, census regions, and the United States, 1977–2010. [Gallons of ethanol, based on population age 14 and older] (Continued)

State or other geographic area	Per capita consumption				U.S. decile for all beverages
	Beer	Wine	Spirits	All beverages	
1996 .....	1.31	0.38	0.94	2.63	2
1995 .....	1.45	0.39	1.02	2.86	1
1994 .....	1.53	0.40	1.10	3.03	1
1993 .....	1.31	0.32	0.92	2.55	2
1992 .....	1.53	0.41	1.08	3.02	1
1991 .....	1.54	0.43	1.14	3.11	1
1990 .....	1.62	0.46	1.25	3.33	1
1989 .....	1.57	0.46	1.24	3.27	1
1988 .....	1.60	0.49	1.23	3.32	1
1987 .....	1.64	0.54	1.29	3.46	1
1986 .....	1.68	0.56	1.27	3.51	1
1985 .....	1.68	0.58	1.53	3.78	1
1984 .....	1.73	0.58	1.56	3.86	1
1983 .....	1.76	0.61	1.70	4.06	1
1982 .....	1.75	0.56	1.74	4.05	1
1981 .....	1.71	0.57	1.82	4.10	1
1980 .....	1.55	0.50	1.70	3.76	1
1979 .....	1.50	0.47	1.65	3.62	1
1978 .....	1.39	0.45	1.68	3.52	2
1977 .....	1.19	0.42	1.70	3.31	2
Arizona					
2010 .....	1.23	0.41	0.76	2.39	5
2009 .....	1.22	0.39	0.76	2.38	5
2008 .....	1.30	0.41	0.77	2.48	5
2007 .....	1.39	0.34	0.78	2.51	4
2006 .....	1.34	0.38	0.79	2.51	4
2005 .....	1.35	0.40	0.76	2.51	3
2004 .....	1.40	0.34	0.71	2.44	4
2003 .....	1.41	0.37	0.71	2.49	3
2002 .....	1.46	0.33	0.69	2.48	3
2001 .....	1.47	0.33	0.70	2.50	3
2000 .....	1.48	0.31	0.71	2.50	3
1999 .....	1.47	0.34	0.69	2.51	2
1998 .....	1.44	0.32	0.68	2.44	2
1997 .....	1.45	0.31	0.68	2.44	2
1996 .....	1.52	0.33	0.73	2.58	2
1995 .....	1.47	0.29	0.68	2.44	3
1994 .....	1.52	0.29	0.70	2.50	2
1993 .....	1.58	0.27	0.76	2.62	2
1992 .....	1.58	0.31	0.80	2.69	2
1991 .....	1.58	0.35	0.78	2.71	2
1990 .....	1.59	0.37	0.80	2.77	3
1989 .....	1.68	0.36	0.85	2.89	2
1988 .....	1.64	0.42	0.88	2.94	2
1987 .....	1.67	0.46	0.86	2.99	2
1986 .....	1.77	0.46	0.91	3.14	2
1985 .....	1.67	0.46	1.00	3.12	2
1984 .....	1.57	0.45	1.06	3.08	3
1983 .....	1.62	0.44	1.00	3.06	3
1982 .....	1.74	0.40	0.99	3.13	3
1981 .....	1.78	0.42	1.01	3.22	3
1980 .....	1.69	0.36	0.98	3.03	4

Decile values (1 = highest) apply only to State-level data. Numbers may not sum because of rounding.

Table 3. Per capita ethanol consumption for States, census regions, and the United States, 1977–2010. [Gallons of ethanol, based on population age 14 and older] (Continued)

State or other geographic area	Per capita consumption				U.S. decile for all beverages
	Beer	Wine	Spirits	All beverages	
1979 .....	1.86	0.39	1.17	3.42	2
1978 .....	1.77	0.37	1.10	3.25	2
1977 .....	1.70	0.34	1.05	3.10	3
Arkansas					
2010 .....	1.04	0.17	0.59	1.81	10
2009 .....	1.06	0.17	0.59	1.83	10
2008 .....	1.10	0.17	0.59	1.86	10
2007 .....	1.06	0.17	0.59	1.82	10
2006 .....	1.06	0.16	0.59	1.81	10
2005 .....	1.05	0.16	0.58	1.79	10
2004 .....	1.07	0.15	0.58	1.81	10
2003 .....	1.06	0.14	0.56	1.77	10
2002 .....	1.09	0.14	0.53	1.75	10
2001 .....	1.06	0.13	0.53	1.72	10
2000 .....	1.09	0.12	0.53	1.74	10
1999 .....	1.09	0.12	0.54	1.75	10
1998 .....	1.10	0.11	0.51	1.73	10
1997 .....	1.08	0.12	0.52	1.71	10
1996 .....	1.10	0.12	0.53	1.75	9
1995 .....	1.08	0.12	0.51	1.70	10
1994 .....	1.06	0.13	0.46	1.65	10
1993 .....	1.10	0.11	0.58	1.79	9
1992 .....	1.13	0.12	0.65	1.90	9
1991 .....	1.12	0.11	0.58	1.81	9
1990 .....	1.12	0.13	0.61	1.86	9
1989 .....	1.08	0.13	0.57	1.78	9
1988 .....	1.07	0.14	0.53	1.74	10
1987 .....	1.08	0.11	0.53	1.71	10
1986 .....	1.06	0.09	0.48	1.63	10
1985 .....	1.03	0.13	0.58	1.75	10
1984 .....	1.02	0.12	0.64	1.78	10
1983 .....	1.03	0.13	0.63	1.78	10
1982 .....	1.03	0.12	0.63	1.78	10
1981 .....	1.06	0.12	0.68	1.87	10
1980 .....	1.00	0.12	0.69	1.81	10
1979 .....	0.93	0.10	0.57	1.60	10
1978 .....	0.97	0.11	0.73	1.82	10
1977 .....	0.92	0.10	0.63	1.65	10
California					
2010 .....	0.97	0.55	0.71	2.23	7
2009 .....	1.04	0.55	0.73	2.31	6
2008 .....	1.07	0.55	0.72	2.34	6
2007 .....	1.07	0.55	0.72	2.34	6
2006 .....	1.05	0.54	0.70	2.30	6
2005 .....	1.02	0.53	0.68	2.24	6
2004 .....	1.06	0.52	0.67	2.25	6
2003 .....	1.07	0.51	0.65	2.23	6
2002 .....	1.08	0.49	0.64	2.20	6
2001 .....	1.08	0.48	0.64	2.20	6
2000 .....	1.07	0.48	0.64	2.19	6

Decile values (1 = highest) apply only to State-level data. Numbers may not sum because of rounding.

Table 3. Per capita ethanol consumption for States, census regions, and the United States, 1977–2010. [Gallons of ethanol, based on population age 14 and older] (Continued)

State or other geographic area	Per capita consumption				U.S. decile for all beverages
	Beer	Wine	Spirits	All beverages	
1999 .....	1.10	0.46	0.62	2.18	6
1998 .....	1.10	0.45	0.61	2.17	6
1997 .....	1.12	0.50	0.62	2.24	5
1996 .....	1.11	0.49	0.64	2.24	5
1995 .....	1.14	0.45	0.64	2.23	4
1994 .....	1.09	0.47	0.68	2.24	5
1993 .....	1.17	0.48	0.69	2.35	4
1992 .....	1.28	0.51	0.75	2.54	3
1991 .....	1.22	0.49	0.75	2.46	4
1990 .....	1.32	0.59	0.87	2.78	2
1989 .....	1.31	0.61	0.87	2.79	2
1988 .....	1.34	0.68	0.89	2.90	2
1987 .....	1.36	0.74	0.93	3.03	2
1986 .....	1.36	0.79	0.96	3.11	2
1985 .....	1.32	0.78	1.02	3.12	2
1984 .....	1.38	0.74	1.07	3.19	2
1983 .....	1.37	0.75	1.11	3.23	2
1982 .....	1.37	0.72	1.14	3.23	3
1981 .....	1.43	0.72	1.21	3.36	2
1980 .....	1.42	0.71	1.25	3.38	2
1979 .....	1.42	0.70	1.28	3.40	2
1978 .....	1.36	0.68	1.32	3.36	2
1977 .....	1.31	0.67	1.28	3.25	2
Colorado					
2010 .....	1.22	0.48	1.01	2.71	2
2009 .....	1.23	0.46	1.01	2.70	2
2008 .....	1.28	0.47	1.02	2.77	2
2007 .....	1.30	0.47	1.01	2.78	2
2006 .....	1.29	0.45	0.98	2.72	2
2005 .....	1.31	0.42	0.99	2.72	2
2004 .....	1.30	0.43	0.95	2.68	2
2003 .....	1.33	0.40	0.87	2.60	2
2002 .....	1.35	0.39	0.90	2.64	2
2001 .....	1.42	0.41	0.96	2.78	1
2000 .....	1.35	0.37	0.89	2.60	2
1999 .....	1.33	0.37	0.75	2.45	3
1998 .....	1.33	0.37	0.83	2.53	2
1997 .....	1.30	0.37	0.81	2.48	2
1996 .....	1.36	0.37	0.84	2.57	2
1995 .....	1.34	0.35	0.78	2.47	2
1994 .....	1.36	0.35	0.84	2.55	2
1993 .....	1.40	0.36	0.86	2.63	2
1992 .....	1.34	0.36	0.81	2.52	3
1991 .....	1.39	0.35	0.87	2.61	3
1990 .....	1.35	0.29	0.75	2.39	6
1989 .....	1.40	0.37	0.84	2.60	3
1988 .....	1.42	0.39	0.91	2.72	3
1987 .....	1.43	0.44	0.93	2.80	3
1986 .....	1.47	0.46	0.94	2.87	3
1985 .....	1.47	0.50	1.18	3.15	2
1984 .....	1.51	0.46	1.12	3.09	2

Decile values (1 = highest) apply only to State-level data. Numbers may not sum because of rounding.

Table 3. Per capita ethanol consumption for States, census regions, and the United States, 1977–2010. [Gallons of ethanol, based on population age 14 and older] (Continued)

State or other geographic area	Per capita consumption				U.S. decile for all beverages
	Beer	Wine	Spirits	All beverages	
1983 .....	1.57	0.46	1.12	3.15	3
1982 .....	1.64	0.46	1.18	3.28	2
1981 .....	1.63	0.44	1.26	3.33	2
1980 .....	1.57	0.47	1.31	3.35	2
1979 .....	1.68	0.47	1.37	3.52	2
1978 .....	1.64	0.47	1.43	3.54	1
1977 .....	1.43	0.36	1.22	3.01	3
Connecticut					
2010 .....	0.88	0.60	0.87	2.36	5
2009 .....	0.88	0.59	0.85	2.31	6
2008 .....	0.93	0.58	0.85	2.36	6
2007 .....	0.92	0.57	0.84	2.33	6
2006 .....	0.92	0.55	0.84	2.31	6
2005 .....	0.90	0.54	0.79	2.23	6
2004 .....	0.93	0.53	0.79	2.25	6
2003 .....	0.93	0.52	0.78	2.23	6
2002 .....	0.95	0.50	0.75	2.21	6
2001 .....	0.95	0.50	0.74	2.19	6
2000 .....	0.94	0.49	0.74	2.18	6
1999 .....	0.94	0.49	0.75	2.18	6
1998 .....	0.96	0.48	0.74	2.18	6
1997 .....	0.95	0.48	0.74	2.17	6
1996 .....	0.94	0.46	0.72	2.13	6
1995 .....	0.97	0.49	0.77	2.22	5
1994 .....	0.99	0.43	0.78	2.20	6
1993 .....	0.96	0.44	0.80	2.20	6
1992 .....	1.01	0.45	0.83	2.30	6
1991 .....	1.03	0.43	0.84	2.29	6
1990 .....	1.09	0.45	0.92	2.46	6
1989 .....	1.09	0.47	0.98	2.54	4
1988 .....	1.14	0.51	1.07	2.71	3
1987 .....	1.15	0.52	1.12	2.79	3
1986 .....	1.13	0.51	1.15	2.79	3
1985 .....	1.14	0.50	1.20	2.84	3
1984 .....	1.10	0.50	1.20	2.80	4
1983 .....	1.10	0.49	1.23	2.82	4
1982 .....	1.04	0.49	1.20	2.73	6
1981 .....	1.05	0.44	1.18	2.67	6
1980 .....	1.06	0.43	1.21	2.70	6
1979 .....	1.13	0.40	1.20	2.72	5
1978 .....	1.07	0.38	1.20	2.65	6
1977 .....	1.05	0.35	1.21	2.61	6
Delaware					
2010 .....	1.30	0.56	1.24	3.09	1
2009 .....	1.30	0.56	1.23	3.09	1
2008 .....	1.34	0.57	1.23	3.14	1
2007 .....	1.37	0.59	1.23	3.18	1
2006 .....	1.41	0.59	1.26	3.26	1
2005 .....	1.42	0.58	1.24	3.25	1
2004 .....	1.42	0.57	1.28	3.27	1

Decile values (1 = highest) apply only to State-level data. Numbers may not sum because of rounding.

Table 3. Per capita ethanol consumption for States, census regions, and the United States, 1977–2010. [Gallons of ethanol, based on population age 14 and older] (Continued)

State or other geographic area	Per capita consumption				U.S. decile for all beverages
	Beer	Wine	Spirits	All beverages	
2003 .....	1.38	0.57	1.18	3.12	1
2002 .....	1.39	0.52	1.10	3.01	1
2001 .....	1.39	0.49	1.07	2.94	1
2000 .....	1.36	0.48	1.05	2.89	1
1999 .....	1.40	0.48	1.03	2.90	1
1998 .....	1.36	0.47	0.98	2.82	1
1997 .....	1.37	0.46	0.99	2.81	1
1996 .....	1.39	0.45	0.94	2.78	1
1995 .....	1.30	0.40	0.92	2.62	2
1994 .....	1.43	0.38	0.95	2.76	1
1993 .....	1.46	0.35	0.95	2.76	1
1992 .....	1.40	0.36	0.97	2.73	2
1991 .....	1.40	0.35	0.95	2.70	2
1990 .....	1.44	0.37	1.14	2.95	2
1989 .....	1.40	0.38	1.13	2.91	2
1988 .....	1.44	0.40	1.19	3.03	1
1987 .....	1.44	0.42	1.22	3.08	2
1986 .....	1.45	0.44	1.23	3.13	2
1985 .....	1.46	0.41	1.30	3.16	2
1984 .....	1.51	0.38	1.28	3.17	2
1983 .....	1.53	0.35	1.34	3.22	2
1982 .....	1.53	0.34	1.36	3.23	3
1981 .....	1.51	0.32	1.39	3.23	3
1980 .....	1.45	0.29	1.38	3.12	3
1979 .....	1.38	0.27	1.34	2.99	4
1978 .....	1.33	0.25	1.33	2.91	4
1977 .....	1.32	0.24	1.35	2.91	4
District of Columbia					
2010 .....	1.22	1.00	1.62	3.84	1
2009 .....	1.26	1.00	1.63	3.88	1
2008 .....	1.35	1.01	1.64	3.99	1
2007 .....	1.37	1.00	1.63	4.00	1
2006 .....	1.38	0.96	1.60	3.95	1
2005 .....	1.40	0.93	1.56	3.90	1
2004 .....	1.37	0.91	1.52	3.79	1
2003 .....	1.37	0.88	1.51	3.75	1
2002 .....	1.36	0.83	1.47	3.66	1
2001 .....	1.33	0.82	1.46	3.61	1
2000 .....	1.35	0.70	1.48	3.53	1
1999 .....	1.37	0.73	1.35	3.45	1
1998 .....	1.37	0.73	1.44	3.55	1
1997 .....	1.40	0.74	1.61	3.75	1
1996 .....	1.42	0.74	1.47	3.63	1
1995 .....	1.51	0.72	1.52	3.74	1
1994 .....	1.50	0.74	1.52	3.76	1
1993 .....	1.51	0.73	1.54	3.78	1
1992 .....	1.61	0.70	1.74	4.05	1
1991 .....	1.42	0.61	1.85	3.89	1
1990 .....	1.42	0.76	1.96	4.14	1
1989 .....	1.49	0.88	1.85	4.22	1
1988 .....	1.47	0.99	2.02	4.48	1

Decile values (1 = highest) apply only to State-level data. Numbers may not sum because of rounding.

Table 3. Per capita ethanol consumption for States, census regions, and the United States, 1977–2010. [Gallons of ethanol, based on population age 14 and older] (Continued)

State or other geographic area	Per capita consumption				U.S. decile for all beverages
	Beer	Wine	Spirits	All beverages	
1987 .....	1.48	1.00	2.37	4.85	1
1986 .....	1.52	1.04	2.19	4.75	1
1985 .....	1.49	1.03	2.42	4.94	1
1984 .....	1.56	1.11	2.68	5.34	1
1983 .....	1.55	1.08	2.79	5.41	1
1982 .....	1.48	1.00	2.91	5.39	1
1981 .....	1.50	1.06	2.92	5.49	1
1980 .....	1.49	0.99	2.94	5.42	1
1979 .....	1.48	0.99	3.03	5.49	1
1978 .....	1.43	0.94	3.14	5.51	1
1977 .....	1.39	0.89	3.26	5.53	1
Florida					
2010 .....	1.12	0.47	0.91	2.51	4
2009 .....	1.19	0.48	0.91	2.58	4
2008 .....	1.24	0.48	0.89	2.61	3
2007 .....	1.28	0.48	0.92	2.68	2
2006 .....	1.32	0.47	0.91	2.70	2
2005 .....	1.33	0.46	0.91	2.70	2
2004 .....	1.34	0.46	0.88	2.68	2
2003 .....	1.31	0.44	0.86	2.61	2
2002 .....	1.32	0.43	0.84	2.58	2
2001 .....	1.32	0.40	0.82	2.54	2
2000 .....	1.32	0.40	0.82	2.55	2
1999 .....	1.33	0.40	0.80	2.53	2
1998 .....	1.30	0.38	0.79	2.47	2
1997 .....	1.34	0.37	0.80	2.51	2
1996 .....	1.36	0.37	0.81	2.54	2
1995 .....	1.34	0.35	0.82	2.50	2
1994 .....	1.40	0.33	0.87	2.60	2
1993 .....	1.44	0.33	0.92	2.68	2
1992 .....	1.45	0.34	0.96	2.75	1
1991 .....	1.43	0.34	0.92	2.69	2
1990 .....	1.54	0.39	1.04	2.96	2
1989 .....	1.51	0.39	1.00	2.90	2
1988 .....	1.51	0.41	1.00	2.92	2
1987 .....	1.51	0.42	1.03	2.95	2
1986 .....	1.50	0.41	1.05	2.96	2
1985 .....	1.47	0.41	1.16	3.04	3
1984 .....	1.48	0.40	1.24	3.12	2
1983 .....	1.56	0.40	1.23	3.19	2
1982 .....	1.56	0.40	1.33	3.29	2
1981 .....	1.55	0.39	1.38	3.31	3
1980 .....	1.42	0.37	1.43	3.22	3
1979 .....	1.47	0.37	1.51	3.34	2
1978 .....	1.41	0.34	1.48	3.23	3
1977 .....	1.33	0.33	1.47	3.13	2
Georgia					
2010 .....	1.07	0.25	0.66	1.97	9
2009 .....	1.09	0.25	0.65	2.00	9
2008 .....	1.15	0.25	0.65	2.05	8

Decile values (1 = highest) apply only to State-level data. Numbers may not sum because of rounding.

Table 3. Per capita ethanol consumption for States, census regions, and the United States, 1977–2010. [Gallons of ethanol, based on population age 14 and older] (Continued)

State or other geographic area	Per capita consumption				U.S. decile for all beverages
	Beer	Wine	Spirits	All beverages	
2007 .....	1.18	0.26	0.65	2.09	8
2006 .....	1.19	0.26	0.65	2.10	8
2005 .....	1.15	0.26	0.64	2.06	8
2004 .....	1.19	0.27	0.65	2.10	8
2003 .....	1.19	0.26	0.66	2.12	7
2002 .....	1.21	0.26	0.65	2.12	7
2001 .....	1.19	0.26	0.65	2.10	7
2000 .....	1.22	0.26	0.69	2.17	7
1999 .....	1.23	0.27	0.69	2.20	6
1998 .....	1.21	0.24	0.70	2.14	7
1997 .....	1.19	0.25	0.70	2.14	6
1996 .....	1.22	0.24	0.70	2.16	6
1995 .....	1.20	0.22	0.71	2.13	6
1994 .....	1.17	0.20	0.77	2.14	7
1993 .....	1.23	0.20	0.77	2.20	6
1992 .....	1.22	0.21	0.79	2.23	7
1991 .....	1.16	0.22	0.78	2.17	7
1990 .....	1.22	0.23	0.86	2.31	7
1989 .....	1.18	0.24	0.94	2.37	6
1988 .....	1.22	0.26	0.92	2.40	6
1987 .....	1.22	0.27	1.00	2.49	6
1986 .....	1.22	0.27	0.95	2.43	6
1985 .....	1.17	0.25	1.01	2.43	7
1984 .....	1.18	0.23	1.06	2.48	7
1983 .....	1.14	0.22	1.05	2.42	7
1982 .....	1.12	0.21	1.04	2.37	8
1981 .....	1.10	0.18	1.09	2.38	8
1980 .....	1.07	0.19	1.09	2.35	8
1979 .....	1.17	0.19	1.22	2.58	7
1978 .....	1.14	0.19	1.26	2.59	7
1977 .....	1.08	0.16	1.23	2.47	7
Hawaii					
2010 .....	1.24	0.52	0.72	2.47	4
2009 .....	1.25	0.51	0.72	2.48	4
2008 .....	1.31	0.51	0.72	2.53	4
2007 .....	1.30	0.48	0.77	2.55	4
2006 .....	1.28	0.47	0.77	2.51	4
2005 .....	1.30	0.45	0.72	2.46	4
2004 .....	1.37	0.48	0.67	2.53	3
2003 .....	1.30	0.42	0.66	2.37	5
2002 .....	1.27	0.39	0.62	2.28	5
2001 .....	1.29	0.38	0.60	2.28	5
2000 .....	1.33	0.39	0.60	2.32	4
1999 .....	1.31	0.39	0.56	2.26	5
1998 .....	1.32	0.37	0.54	2.22	5
1997 .....	1.37	0.37	0.56	2.30	4
1996 .....	1.40	0.36	0.58	2.34	4
1995 .....	1.41	0.34	0.57	2.32	4
1994 .....	1.46	0.38	0.62	2.47	3
1993 .....	1.49	0.37	0.65	2.51	3
1992 .....	1.55	0.39	0.69	2.63	2
1991 .....	1.57	0.40	0.70	2.67	2

Decile values (1 = highest) apply only to State-level data. Numbers may not sum because of rounding.



Table 3. Per capita ethanol consumption for States, census regions, and the United States, 1977–2010. [Gallons of ethanol, based on population age 14 and older] (Continued)

State or other geographic area	Per capita consumption				U.S. decile for all beverages
	Beer	Wine	Spirits	All beverages	
1990 .....	1.64	0.40	0.79	2.84	2
1989 .....	1.54	0.43	0.79	2.76	3
1988 .....	1.62	0.45	0.79	2.86	3
1987 .....	1.57	0.40	0.76	2.73	4
1986 .....	1.60	0.44	0.85	2.88	3
1985 .....	1.59	0.41	0.88	2.88	3
1984 .....	1.65	0.41	0.91	2.97	3
1983 .....	1.87	0.44	1.12	3.43	1
1982 .....	1.80	0.48	1.14	3.42	1
1981 .....	1.74	0.44	1.16	3.34	2
1980 .....	1.65	0.46	1.21	3.31	2
1979 .....	1.60	0.44	1.28	3.32	3
1978 .....	1.38	0.46	1.30	3.15	3
1977 .....	1.61	0.36	1.26	3.23	2
Idaho					
2010 .....	1.06	0.90	0.72	2.67	3
2009 .....	1.05	0.91	0.70	2.67	3
2008 .....	1.15	0.81	0.69	2.64	3
2007 .....	1.17	0.73	0.67	2.58	4
2006 .....	1.14	0.74	0.65	2.53	4
2005 .....	1.11	0.74	0.61	2.45	4
2004 .....	1.14	0.72	0.57	2.43	4
2003 .....	1.15	0.65	0.55	2.35	5
2002 .....	1.16	0.64	0.53	2.33	5
2001 .....	1.14	0.63	0.53	2.30	5
2000 .....	1.16	0.65	0.51	2.32	4
1999 .....	1.17	0.68	0.52	2.36	4
1998 .....	1.15	0.59	0.51	2.25	4
1997 .....	1.14	0.36	0.50	2.00	7
1996 .....	1.18	0.30	0.51	1.98	7
1995 .....	1.15	0.30	0.53	1.98	7
1994 .....	1.24	0.35	0.53	2.12	7
1993 .....	1.26	0.29	0.55	2.11	7
1992 .....	1.32	0.31	0.57	2.20	7
1991 .....	1.31	0.32	0.56	2.19	7
1990 .....	1.36	0.33	0.58	2.27	7
1989 .....	1.23	0.30	0.56	2.09	8
1988 .....	1.25	0.36	0.58	2.18	7
1987 .....	1.31	0.38	0.58	2.26	7
1986 .....	1.34	0.38	0.61	2.33	7
1985 .....	1.35	0.36	0.71	2.42	7
1984 .....	1.40	0.31	0.72	2.43	7
1983 .....	1.44	0.30	0.76	2.51	7
1982 .....	1.47	0.31	0.81	2.58	7
1981 .....	1.54	0.33	0.83	2.70	6
1980 .....	1.53	0.30	0.77	2.60	7
1979 .....	1.55	0.27	0.84	2.65	6
1978 .....	1.50	0.26	0.80	2.56	7
1977 .....	1.50	0.22	0.79	2.52	7

Decile values (1 = highest) apply only to State-level data. Numbers may not sum because of rounding.

Table 3. Per capita ethanol consumption for States, census regions, and the United States, 1977–2010. [Gallons of ethanol, based on population age 14 and older] (Continued)

State or other geographic area	Per capita consumption				U.S. decile for all beverages
	Beer	Wine	Spirits	All beverages	
Illinois					
2010 .....	1.20	0.40	0.74	2.34	6
2009 .....	1.22	0.39	0.74	2.35	6
2008 .....	1.23	0.38	0.74	2.34	6
2007 .....	1.24	0.41	0.74	2.38	6
2006 .....	1.24	0.37	0.74	2.35	6
2005 .....	1.23	0.34	0.71	2.29	6
2004 .....	1.23	0.32	0.67	2.22	6
2003 .....	1.26	0.35	0.74	2.36	5
2002 .....	1.28	0.33	0.65	2.26	6
2001 .....	1.27	0.32	0.68	2.28	5
2000 .....	1.28	0.32	0.63	2.24	6
1999 .....	1.29	0.33	0.66	2.27	5
1998 .....	1.28	0.34	0.64	2.25	4
1997 .....	1.26	0.35	0.65	2.26	5
1996 .....	1.27	0.35	0.68	2.30	4
1995 .....	1.30	0.33	0.66	2.29	4
1994 .....	1.32	0.34	0.69	2.35	4
1993 .....	1.32	0.34	0.72	2.38	4
1992 .....	1.34	0.35	0.74	2.43	4
1991 .....	1.38	0.34	0.76	2.48	4
1990 .....	1.43	0.36	0.82	2.62	4
1989 .....	1.38	0.35	0.82	2.56	4
1988 .....	1.42	0.37	0.85	2.64	4
1987 .....	1.41	0.39	0.87	2.66	4
1986 .....	1.40	0.39	0.90	2.68	4
1985 .....	1.38	0.37	0.98	2.72	5
1984 .....	1.40	0.37	1.01	2.77	5
1983 .....	1.42	0.35	1.03	2.80	5
1982 .....	1.41	0.35	1.06	2.83	5
1981 .....	1.43	0.35	1.12	2.91	5
1980 .....	1.43	0.33	1.24	3.00	4
1979 .....	1.45	0.33	1.17	2.94	4
1978 .....	1.38	0.31	1.19	2.88	4
1977 .....	1.35	0.30	1.22	2.87	4
Indiana					
2010 .....	1.03	0.26	0.74	2.03	8
2009 .....	1.08	0.25	0.72	2.05	8
2008 .....	1.10	0.24	0.73	2.08	8
2007 .....	1.13	0.24	0.72	2.09	8
2006 .....	1.09	0.25	0.66	2.00	9
2005 .....	1.11	0.22	0.68	2.01	8
2004 .....	1.14	0.22	0.65	2.01	8
2003 .....	1.11	0.21	0.64	1.96	9
2002 .....	1.13	0.20	0.60	1.93	9
2001 .....	1.15	0.19	0.62	1.96	9
2000 .....	1.16	0.20	0.61	1.98	8
1999 .....	1.16	0.19	0.59	1.94	8
1998 .....	1.14	0.19	0.58	1.91	8
1997 .....	1.12	0.19	0.59	1.90	8

Decile values (1 = highest) apply only to State-level data. Numbers may not sum because of rounding.

Table 3. Per capita ethanol consumption for States, census regions, and the United States, 1977–2010. [Gallons of ethanol, based on population age 14 and older] (Continued)

State or other geographic area	Per capita consumption				U.S. decile for all beverages
	Beer	Wine	Spirits	All beverages	
1996 .....	1.13	0.19	0.57	1.89	8
1995 .....	1.12	0.21	0.58	1.91	8
1994 .....	1.15	0.20	0.59	1.94	8
1993 .....	1.15	0.19	0.64	1.98	8
1992 .....	1.16	0.20	0.58	1.95	9
1991 .....	1.22	0.19	0.60	2.00	9
1990 .....	1.26	0.20	0.63	2.09	8
1989 .....	1.21	0.19	0.63	2.04	8
1988 .....	1.23	0.21	0.66	2.10	8
1987 .....	1.24	0.22	0.67	2.13	8
1986 .....	1.25	0.23	0.67	2.14	8
1985 .....	1.25	0.22	0.72	2.19	8
1984 .....	1.26	0.21	0.72	2.19	8
1983 .....	1.27	0.19	0.73	2.19	8
1982 .....	1.29	0.18	0.76	2.23	8
1981 .....	1.29	0.18	0.78	2.25	8
1980 .....	1.26	0.17	0.77	2.21	8
1979 .....	1.23	0.15	0.79	2.18	9
1978 .....	1.19	0.16	0.79	2.14	8
1977 .....	1.14	0.14	0.77	2.05	9
Iowa					
2010 .....	1.37	0.18	0.73	2.29	6
2009 .....	1.41	0.18	0.72	2.30	7
2008 .....	1.41	0.17	0.70	2.28	7
2007 .....	1.39	0.17	0.67	2.23	7
2006 .....	1.38	0.16	0.65	2.18	7
2005 .....	1.38	0.16	0.61	2.14	7
2004 .....	1.38	0.16	0.57	2.12	7
2003 .....	1.38	0.15	0.54	2.07	8
2002 .....	1.38	0.14	0.51	2.04	8
2001 .....	1.36	0.13	0.50	1.99	8
2000 .....	1.35	0.13	0.50	1.98	8
1999 .....	1.34	0.13	0.48	1.95	8
1998 .....	1.31	0.12	0.46	1.90	8
1997 .....	1.28	0.12	0.45	1.85	9
1996 .....	1.28	0.12	0.45	1.85	9
1995 .....	1.26	0.11	0.44	1.80	9
1994 .....	1.30	0.10	0.44	1.84	9
1993 .....	1.28	0.11	0.48	1.87	9
1992 .....	1.31	0.13	0.46	1.90	9
1991 .....	1.32	0.16	0.52	2.01	8
1990 .....	1.34	0.18	0.54	2.06	9
1989 .....	1.26	0.18	0.50	1.94	9
1988 .....	1.28	0.20	0.52	1.99	9
1987 .....	1.30	0.21	0.57	2.08	9
1986 .....	1.32	0.19	0.53	2.04	9
1985 .....	1.31	0.14	0.57	2.02	9
1984 .....	1.36	0.12	0.61	2.09	9
1983 .....	1.38	0.13	0.64	2.15	8
1982 .....	1.39	0.13	0.65	2.17	9
1981 .....	1.44	0.13	0.69	2.27	8
1980 .....	1.41	0.13	0.71	2.25	8

Decile values (1 = highest) apply only to State-level data. Numbers may not sum because of rounding.

Table 3. Per capita ethanol consumption for States, census regions, and the United States, 1977–2010. [Gallons of ethanol, based on population age 14 and older] (Continued)

State or other geographic area	Per capita consumption				U.S. decile for all beverages
	Beer	Wine	Spirits	All beverages	
1979 .....	1.40	0.11	0.71	2.22	8
1978 .....	1.38	0.11	0.74	2.22	8
1977 .....	1.33	0.10	0.74	2.17	8
Kansas					
2010 .....	1.13	0.14	0.68	1.95	9
2009 .....	1.18	0.14	0.67	1.99	9
2008 .....	1.22	0.14	0.65	2.01	9
2007 .....	1.17	0.15	0.64	1.96	9
2006 .....	1.14	0.18	0.61	1.94	9
2005 .....	1.14	0.18	0.57	1.89	9
2004 .....	1.14	0.16	0.56	1.86	9
2003 .....	1.16	0.17	0.56	1.89	10
2002 .....	1.19	0.15	0.54	1.88	9
2001 .....	1.12	0.15	0.53	1.80	9
2000 .....	1.15	0.15	0.52	1.82	9
1999 .....	1.14	0.16	0.54	1.84	9
1998 .....	1.09	0.15	0.54	1.79	9
1997 .....	1.09	0.14	0.48	1.71	10
1996 .....	1.05	0.14	0.49	1.69	10
1995 .....	1.08	0.15	0.50	1.72	9
1994 .....	1.12	0.13	0.48	1.73	10
1993 .....	1.09	0.14	0.52	1.75	10
1992 .....	1.09	0.14	0.55	1.78	10
1991 .....	1.15	0.14	0.57	1.85	9
1990 .....	1.13	0.13	0.53	1.79	10
1989 .....	1.10	0.13	0.54	1.77	10
1988 .....	1.11	0.21	0.56	1.88	9
1987 .....	1.12	0.16	0.56	1.84	9
1986 .....	1.12	0.17	0.59	1.88	9
1985 .....	1.17	0.15	0.64	1.96	9
1984 .....	1.18	0.14	0.63	1.95	9
1983 .....	1.20	0.13	0.64	1.96	9
1982 .....	1.22	0.13	0.67	2.02	9
1981 .....	1.23	0.12	0.70	2.05	9
1980 .....	1.23	0.11	0.62	1.96	9
1979 .....	1.17	0.11	0.73	2.01	9
1978 .....	1.14	0.12	0.64	1.89	10
1977 .....	1.13	0.10	0.65	1.88	10
Kentucky					
2010 .....	0.95	0.18	0.66	1.78	10
2009 .....	1.11	0.18	0.65	1.94	9
2008 .....	1.03	0.17	0.65	1.85	10
2007 .....	1.04	0.17	0.63	1.85	10
2006 .....	1.04	0.17	0.62	1.83	10
2005 .....	1.04	0.14	0.61	1.80	10
2004 .....	1.07	0.17	0.57	1.81	10
2003 .....	1.03	0.15	0.57	1.75	10
2002 .....	1.08	0.14	0.54	1.77	10
2001 .....	1.04	0.12	0.46	1.63	10
2000 .....	1.07	0.14	0.54	1.74	10

Decile values (1 = highest) apply only to State-level data. Numbers may not sum because of rounding.

Table 3. Per capita ethanol consumption for States, census regions, and the United States, 1977–2010. [Gallons of ethanol, based on population age 14 and older] (Continued)

State or other geographic area	Per capita consumption				U.S. decile for all beverages
	Beer	Wine	Spirits	All beverages	
1999 .....	1.07	0.13	0.54	1.74	10
1998 .....	1.07	0.13	0.53	1.72	10
1997 .....	1.06	0.13	0.53	1.72	9
1996 .....	1.05	0.13	0.54	1.72	10
1995 .....	1.05	0.12	0.54	1.71	10
1994 .....	1.08	0.11	0.55	1.73	10
1993 .....	1.08	0.10	0.55	1.73	10
1992 .....	1.04	0.11	0.56	1.71	10
1991 .....	1.11	0.11	0.56	1.78	10
1990 .....	1.12	0.11	0.60	1.83	10
1989 .....	1.08	0.12	0.56	1.76	10
1988 .....	1.08	0.12	0.59	1.79	10
1987 .....	1.03	0.14	0.59	1.76	10
1986 .....	1.09	0.13	0.62	1.84	10
1985 .....	1.07	0.13	0.66	1.86	10
1984 .....	1.05	0.12	0.68	1.85	10
1983 .....	1.13	0.12	0.69	1.94	9
1982 .....	1.14	0.12	0.73	1.99	9
1981 .....	1.13	0.11	0.75	1.99	9
1980 .....	1.08	0.10	0.74	1.91	10
1979 .....	1.10	0.09	0.77	1.97	10
1978 .....	1.07	0.09	0.77	1.93	10
1977 .....	1.19	0.09	0.75	2.03	9
Louisiana					
2010 .....	1.41	0.28	0.84	2.53	3
2009 .....	1.50	0.28	0.85	2.63	3
2008 .....	1.55	0.26	0.83	2.64	3
2007 .....	1.56	0.27	0.81	2.65	3
2006 .....	1.58	0.25	0.79	2.62	3
2005 .....	1.44	0.24	0.71	2.39	5
2004 .....	1.38	0.26	0.73	2.36	5
2003 .....	1.41	0.25	0.72	2.38	4
2002 .....	1.32	0.24	0.70	2.26	5
2001 .....	1.49	0.23	0.69	2.41	3
2000 .....	1.50	0.22	0.70	2.42	3
1999 .....	1.54	0.24	0.69	2.46	2
1998 .....	1.50	0.23	0.70	2.43	3
1997 .....	1.50	0.23	0.71	2.44	2
1996 .....	1.50	0.22	0.72	2.44	2
1995 .....	1.55	0.21	0.73	2.50	2
1994 .....	1.45	0.21	0.73	2.39	3
1993 .....	1.53	0.21	0.72	2.47	3
1992 .....	1.55	0.22	0.74	2.51	3
1991 .....	1.52	0.21	0.73	2.46	4
1990 .....	1.53	0.23	0.78	2.54	5
1989 .....	1.43	0.23	0.72	2.38	6
1988 .....	1.44	0.24	0.69	2.37	7
1987 .....	1.36	0.24	0.75	2.34	7
1986 .....	1.39	0.26	0.78	2.42	7
1985 .....	1.35	0.27	0.86	2.49	6
1984 .....	1.40	0.29	0.94	2.63	6

Decile values (1 = highest) apply only to State-level data. Numbers may not sum because of rounding.

Table 3. Per capita ethanol consumption for States, census regions, and the United States, 1977–2010. [Gallons of ethanol, based on population age 14 and older] (Continued)

State or other geographic area	Per capita consumption				U.S. decile for all beverages
	Beer	Wine	Spirits	All beverages	
1983 .....	1.43	0.30	1.02	2.75	5
1982 .....	1.49	0.30	1.00	2.78	5
1981 .....	1.48	0.27	1.02	2.77	6
1980 .....	1.41	0.27	1.04	2.71	6
1979 .....	1.36	0.26	1.08	2.70	6
1978 .....	1.35	0.25	1.07	2.67	6
1977 .....	1.30	0.25	1.03	2.57	6
Maine					
2010 .....	1.23	0.42	0.84	2.49	4
2009 .....	1.23	0.41	0.82	2.47	5
2008 .....	1.25	0.42	0.81	2.48	5
2007 .....	1.26	0.42	0.79	2.48	5
2006 .....	1.25	0.42	0.78	2.46	5
2005 .....	1.24	0.41	0.77	2.43	4
2004 .....	1.26	0.41	0.76	2.43	4
2003 .....	1.25	0.40	0.74	2.39	4
2002 .....	1.23	0.40	0.70	2.33	5
2001 .....	1.20	0.37	0.70	2.27	5
2000 .....	1.17	0.39	0.73	2.29	5
1999 .....	1.16	0.37	0.73	2.26	5
1998 .....	1.14	0.34	0.68	2.16	6
1997 .....	1.15	0.33	0.71	2.19	5
1996 .....	1.17	0.33	0.71	2.22	5
1995 .....	1.17	0.29	0.72	2.19	6
1994 .....	1.13	0.27	0.77	2.17	6
1993 .....	1.15	0.29	0.79	2.22	6
1992 .....	1.16	0.29	0.78	2.23	6
1991 .....	1.18	0.30	0.77	2.25	6
1990 .....	1.21	0.31	0.82	2.34	6
1989 .....	1.25	0.34	0.85	2.44	5
1988 .....	1.28	0.36	0.91	2.54	5
1987 .....	1.26	0.38	0.91	2.55	5
1986 .....	1.28	0.36	0.91	2.56	5
1985 .....	1.29	0.33	0.94	2.56	6
1984 .....	1.25	0.31	1.01	2.57	6
1983 .....	1.32	0.29	1.03	2.63	6
1982 .....	1.30	0.30	1.02	2.63	6
1981 .....	1.24	0.28	1.05	2.57	7
1980 .....	1.32	0.29	1.06	2.67	6
1979 .....	1.30	0.27	1.08	2.65	6
1978 .....	1.31	0.27	1.05	2.62	6
1977 .....	1.37	0.23	1.04	2.64	6
Maryland					
2010 .....	0.94	0.38	0.89	2.21	7
2009 .....	0.96	0.36	0.86	2.19	7
2008 .....	0.99	0.36	0.84	2.19	7
2007 .....	1.01	0.36	0.84	2.20	7
2006 .....	1.01	0.34	0.83	2.18	7
2005 .....	0.93	0.32	0.85	2.11	7
2004 .....	1.03	0.33	0.79	2.15	7

Decile values (1 = highest) apply only to State-level data. Numbers may not sum because of rounding.

Table 3. Per capita ethanol consumption for States, census regions, and the United States, 1977–2010. [Gallons of ethanol, based on population age 14 and older] (Continued)

State or other geographic area	Per capita consumption				U.S. decile for all beverages
	Beer	Wine	Spirits	All beverages	
2003 .....	1.03	0.32	0.77	2.12	7
2002 .....	1.06	0.31	0.76	2.12	7
2001 .....	1.06	0.30	0.75	2.11	7
2000 .....	1.04	0.30	0.75	2.09	7
1999 .....	1.04	0.30	0.74	2.08	7
1998 .....	1.05	0.30	0.73	2.08	7
1997 .....	1.05	0.29	0.73	2.07	7
1996 .....	1.05	0.29	0.74	2.08	7
1995 .....	1.06	0.28	0.74	2.09	7
1994 .....	1.09	0.28	0.78	2.15	6
1993 .....	1.10	0.28	0.80	2.19	7
1992 .....	1.11	0.29	0.86	2.26	6
1991 .....	1.15	0.30	0.89	2.33	6
1990 .....	1.22	0.33	0.96	2.51	5
1989 .....	1.22	0.34	0.98	2.54	4
1988 .....	1.26	0.36	1.01	2.62	4
1987 .....	1.29	0.38	1.07	2.74	3
1986 .....	1.29	0.39	1.08	2.75	4
1985 .....	1.31	0.36	1.14	2.81	4
1984 .....	1.31	0.36	1.17	2.84	4
1983 .....	1.34	0.35	1.20	2.89	4
1982 .....	1.27	0.32	1.17	2.77	5
1981 .....	1.39	0.34	1.33	3.06	4
1980 .....	1.42	0.33	1.35	3.09	4
1979 .....	1.43	0.31	1.39	3.14	3
1978 .....	1.41	0.31	1.38	3.09	3
1977 .....	1.37	0.30	1.39	3.05	3
Massachusetts					
2010 .....	1.04	0.62	0.84	2.50	4
2009 .....	1.03	0.62	0.85	2.49	4
2008 .....	1.08	0.62	0.84	2.54	4
2007 .....	1.02	0.62	0.86	2.50	4
2006 .....	1.10	0.61	0.85	2.56	3
2005 .....	1.07	0.59	0.85	2.51	3
2004 .....	1.10	0.58	0.84	2.52	3
2003 .....	1.10	0.56	0.82	2.49	3
2002 .....	1.13	0.54	0.80	2.47	3
2001 .....	1.13	0.52	0.79	2.44	3
2000 .....	1.16	0.51	0.87	2.55	2
1999 .....	1.09	0.51	0.79	2.39	3
1998 .....	1.14	0.50	0.75	2.39	3
1997 .....	1.13	0.49	0.76	2.39	3
1996 .....	1.11	0.48	0.77	2.35	3
1995 .....	1.13	0.44	0.78	2.35	3
1994 .....	1.14	0.44	0.80	2.38	3
1993 .....	1.14	0.44	0.80	2.38	4
1992 .....	1.12	0.44	0.82	2.38	5
1991 .....	1.19	0.43	0.87	2.49	3
1990 .....	1.22	0.45	0.97	2.63	3
1989 .....	1.26	0.47	1.02	2.75	3
1988 .....	1.29	0.50	1.07	2.86	3

Decile values (1 = highest) apply only to State-level data. Numbers may not sum because of rounding.

Table 3. Per capita ethanol consumption for States, census regions, and the United States, 1977–2010. [Gallons of ethanol, based on population age 14 and older] (Continued)

State or other geographic area	Per capita consumption				U.S. decile for all beverages
	Beer	Wine	Spirits	All beverages	
1987 .....	1.29	0.51	1.12	2.93	3
1986 .....	1.31	0.53	1.12	2.96	3
1985 .....	1.30	0.51	1.21	3.01	3
1984 .....	1.30	0.51	1.24	3.04	3
1983 .....	1.36	0.50	1.21	3.07	3
1982 .....	1.35	0.49	1.22	3.07	3
1981 .....	1.44	0.49	1.24	3.17	3
1980 .....	1.47	0.45	1.27	3.19	3
1979 .....	1.39	0.42	1.23	3.04	4
1978 .....	1.37	0.40	1.25	3.02	4
1977 .....	1.34	0.37	1.24	2.95	3
Michigan					
2010 .....	1.09	0.33	0.82	2.24	6
2009 .....	1.11	0.32	0.81	2.24	7
2008 .....	1.13	0.30	0.80	2.23	7
2007 .....	1.13	0.30	0.78	2.21	7
2006 .....	1.13	0.29	0.77	2.19	7
2005 .....	1.15	0.29	0.75	2.19	7
2004 .....	1.16	0.28	0.72	2.16	7
2003 .....	1.18	0.26	0.71	2.14	7
2002 .....	1.17	0.23	0.69	2.09	7
2001 .....	1.19	0.24	0.68	2.11	7
2000 .....	1.19	0.24	0.69	2.12	7
1999 .....	1.19	0.24	0.68	2.11	7
1998 .....	1.20	0.22	0.69	2.12	7
1997 .....	1.17	0.22	0.66	2.06	7
1996 .....	1.20	0.22	0.67	2.08	7
1995 .....	1.20	0.19	0.66	2.06	7
1994 .....	1.23	0.20	0.67	2.10	7
1993 .....	1.25	0.20	0.72	2.18	7
1992 .....	1.26	0.22	0.74	2.21	7
1991 .....	1.30	0.22	0.74	2.26	6
1990 .....	1.33	0.28	0.80	2.42	6
1989 .....	1.29	0.30	0.80	2.38	6
1988 .....	1.31	0.32	0.84	2.47	6
1987 .....	1.32	0.33	0.85	2.50	6
1986 .....	1.33	0.33	0.90	2.56	5
1985 .....	1.30	0.32	0.95	2.58	6
1984 .....	1.32	0.31	0.97	2.60	6
1983 .....	1.35	0.28	0.97	2.60	6
1982 .....	1.35	0.39	0.98	2.72	6
1981 .....	1.34	0.29	1.00	2.63	6
1980 .....	1.34	0.28	1.03	2.65	6
1979 .....	1.37	0.25	1.03	2.65	6
1978 .....	1.43	0.25	1.05	2.74	5
1977 .....	1.45	0.24	1.02	2.71	5
Minnesota					
2010 .....	1.10	0.33	0.99	2.42	5
2009 .....	1.18	0.37	1.04	2.59	4
2008 .....	1.21	0.36	1.02	2.60	4

Decile values (1 = highest) apply only to State-level data. Numbers may not sum because of rounding.



Table 3. Per capita ethanol consumption for States, census regions, and the United States, 1977–2010. [Gallons of ethanol, based on population age 14 and older] (Continued)

State or other geographic area	Per capita consumption				U.S. decile for all beverages
	Beer	Wine	Spirits	All beverages	
2007 .....	1.16	0.36	0.97	2.49	5
2006 .....	1.15	0.32	0.93	2.40	5
2005 .....	1.18	0.33	0.97	2.48	3
2004 .....	1.24	0.31	0.94	2.50	3
2003 .....	1.22	0.29	0.91	2.43	3
2002 .....	1.26	0.28	0.88	2.41	3
2001 .....	1.25	0.26	0.88	2.39	4
2000 .....	1.24	0.26	0.87	2.36	4
1999 .....	1.23	0.27	0.86	2.36	4
1998 .....	1.16	0.27	0.84	2.27	4
1997 .....	1.23	0.27	0.83	2.33	3
1996 .....	1.25	0.26	0.83	2.34	4
1995 .....	1.24	0.26	0.83	2.32	3
1994 .....	1.27	0.25	0.83	2.35	4
1993 .....	1.24	0.24	0.84	2.33	5
1992 .....	1.25	0.25	0.85	2.35	5
1991 .....	1.30	0.24	0.81	2.35	5
1990 .....	1.32	0.27	0.96	2.55	4
1989 .....	1.28	0.27	0.88	2.43	5
1988 .....	1.30	0.30	0.89	2.49	5
1987 .....	1.31	0.32	0.94	2.56	5
1986 .....	1.30	0.33	0.92	2.56	6
1985 .....	1.31	0.31	1.06	2.68	5
1984 .....	1.34	0.28	1.07	2.68	5
1983 .....	1.37	0.27	1.10	2.74	6
1982 .....	1.36	0.27	1.11	2.75	6
1981 .....	1.39	0.27	1.18	2.83	5
1980 .....	1.40	0.26	1.20	2.85	5
1979 .....	1.35	0.24	1.16	2.75	5
1978 .....	1.31	0.23	1.15	2.69	5
1977 .....	1.30	0.20	1.15	2.65	5
Mississippi					
2010 .....	1.37	0.11	0.70	2.18	8
2009 .....	1.40	0.11	0.70	2.22	7
2008 .....	1.44	0.12	0.70	2.26	7
2007 .....	1.45	0.12	0.68	2.25	7
2006 .....	1.45	0.12	0.67	2.23	7
2005 .....	1.40	0.12	0.65	2.17	7
2004 .....	1.40	0.12	0.63	2.15	7
2003 .....	1.41	0.12	0.63	2.15	7
2002 .....	1.41	0.12	0.61	2.13	7
2001 .....	1.40	0.11	0.61	2.12	7
2000 .....	1.43	0.09	0.60	2.13	7
1999 .....	1.45	0.10	0.61	2.15	7
1998 .....	1.40	0.09	0.59	2.08	7
1997 .....	1.37	0.09	0.61	2.07	7
1996 .....	1.37	0.09	0.62	2.08	7
1995 .....	1.36	0.09	0.61	2.06	7
1994 .....	1.28	0.08	0.63	2.00	7
1993 .....	1.37	0.10	0.63	2.11	7
1992 .....	1.35	0.09	0.63	2.08	8
1991 .....	1.32	0.09	0.64	2.05	8

Decile values (1 = highest) apply only to State-level data. Numbers may not sum because of rounding.

Table 3. Per capita ethanol consumption for States, census regions, and the United States, 1977–2010. [Gallons of ethanol, based on population age 14 and older] (Continued)

State or other geographic area	Per capita consumption				U.S. decile for all beverages
	Beer	Wine	Spirits	All beverages	
1990 .....	1.34	0.09	0.65	2.08	8
1989 .....	1.26	0.09	0.65	2.00	9
1988 .....	1.28	0.09	0.66	2.03	9
1987 .....	1.26	0.09	0.66	2.01	9
1986 .....	1.26	0.10	0.68	2.04	9
1985 .....	1.21	0.10	0.73	2.04	9
1984 .....	1.19	0.11	0.77	2.06	9
1983 .....	1.19	0.11	0.79	2.09	9
1982 .....	1.19	0.11	0.82	2.11	9
1981 .....	1.19	0.11	0.84	2.14	9
1980 .....	1.13	0.10	0.86	2.09	9
1979 .....	1.15	0.10	0.84	2.09	9
1978 .....	1.16	0.10	0.91	2.18	8
1977 .....	1.08	0.11	0.86	2.05	8
Missouri					
2010 .....	1.27	0.32	0.81	2.41	5
2009 .....	1.30	0.30	0.83	2.43	5
2008 .....	1.32	0.30	0.80	2.42	5
2007 .....	1.33	0.30	0.78	2.40	5
2006 .....	1.33	0.28	0.76	2.37	5
2005 .....	1.30	0.27	0.73	2.30	6
2004 .....	1.33	0.27	0.72	2.32	5
2003 .....	1.34	0.26	0.70	2.29	6
2002 .....	1.48	0.25	0.67	2.39	4
2001 .....	1.35	0.23	0.67	2.25	6
2000 .....	1.35	0.23	0.67	2.25	6
1999 .....	1.35	0.23	0.66	2.23	6
1998 .....	1.33	0.23	0.63	2.18	6
1997 .....	1.30	0.22	0.63	2.15	6
1996 .....	1.31	0.22	0.57	2.09	7
1995 .....	1.31	0.20	0.62	2.14	6
1994 .....	1.36	0.19	0.66	2.21	6
1993 .....	1.33	0.20	0.67	2.20	6
1992 .....	1.34	0.21	0.69	2.24	6
1991 .....	1.35	0.22	0.64	2.20	7
1990 .....	1.37	0.22	0.70	2.30	7
1989 .....	1.33	0.22	0.69	2.24	7
1988 .....	1.33	0.25	0.69	2.28	7
1987 .....	1.36	0.27	0.72	2.35	7
1986 .....	1.36	0.28	0.72	2.36	7
1985 .....	1.33	0.26	0.76	2.36	7
1984 .....	1.34	0.25	0.68	2.27	8
1983 .....	1.37	0.22	0.78	2.37	8
1982 .....	1.38	0.21	0.79	2.38	7
1981 .....	1.40	0.21	0.83	2.45	7
1980 .....	1.39	0.20	0.84	2.44	7
1979 .....	1.37	0.20	0.86	2.43	7
1978 .....	1.31	0.20	0.89	2.40	7
1977 .....	1.23	0.19	0.83	2.25	8

Decile values (1 = highest) apply only to State-level data. Numbers may not sum because of rounding.

Table 3. Per capita ethanol consumption for States, census regions, and the United States, 1977–2010. [Gallons of ethanol, based on population age 14 and older] (Continued)

State or other geographic area	Per capita consumption				U.S. decile for all beverages
	Beer	Wine	Spirits	All beverages	
Montana					
2010 .....	1.65	0.35	0.88	2.88	2
2009 .....	1.64	0.45	0.87	2.96	2
2008 .....	1.66	0.44	0.87	2.97	2
2007 .....	1.66	0.43	0.85	2.94	2
2006 .....	1.64	0.41	0.82	2.87	2
2005 .....	1.52	0.34	0.78	2.64	2
2004 .....	1.56	0.34	0.75	2.65	2
2003 .....	1.56	0.33	0.72	2.62	2
2002 .....	1.62	0.33	0.70	2.65	2
2001 .....	1.58	0.30	0.68	2.56	2
2000 .....	1.55	0.29	0.68	2.53	2
1999 .....	1.56	0.29	0.67	2.52	2
1998 .....	1.51	0.28	0.65	2.44	2
1997 .....	1.49	0.29	0.63	2.42	3
1996 .....	1.49	0.27	0.64	2.40	3
1995 .....	1.49	0.26	0.78	2.54	2
1994 .....	1.57	0.24	0.70	2.51	2
1993 .....	1.49	0.25	0.73	2.47	3
1992 .....	1.59	0.26	0.75	2.61	2
1991 .....	1.61	0.28	0.76	2.64	3
1990 .....	1.60	0.29	0.77	2.67	3
1989 .....	1.56	0.29	0.72	2.57	4
1988 .....	1.59	0.32	0.76	2.66	4
1987 .....	1.57	0.33	0.77	2.67	4
1986 .....	1.58	0.34	0.81	2.73	4
1985 .....	1.60	0.33	0.88	2.81	4
1984 .....	1.70	0.32	0.93	2.95	3
1983 .....	1.79	0.32	0.99	3.09	3
1982 .....	1.82	0.32	1.02	3.17	3
1981 .....	1.90	0.33	1.05	3.28	3
1980 .....	1.82	0.35	1.04	3.21	3
1979 .....	1.83	0.41	1.05	3.29	3
1978 .....	1.82	0.20	1.07	3.10	3
1977 .....	1.83	0.20	1.10	3.12	3
Nebraska					
2010 .....	1.43	0.20	0.68	2.31	6
2009 .....	1.44	0.20	0.68	2.32	6
2008 .....	1.46	0.20	0.67	2.34	6
2007 .....	1.44	0.20	0.67	2.32	6
2006 .....	1.42	0.21	0.71	2.35	6
2005 .....	1.41	0.20	0.68	2.29	6
2004 .....	1.43	0.20	0.65	2.28	6
2003 .....	1.43	0.19	0.63	2.24	6
2002 .....	1.45	0.17	0.61	2.23	6
2001 .....	1.43	0.16	0.60	2.20	6
2000 .....	1.44	0.17	0.62	2.23	6
1999 .....	1.42	0.17	0.60	2.19	6
1998 .....	1.39	0.18	0.58	2.16	6
1997 .....	1.35	0.18	0.56	2.09	7

Decile values (1 = highest) apply only to State-level data. Numbers may not sum because of rounding.

Table 3. Per capita ethanol consumption for States, census regions, and the United States, 1977–2010. [Gallons of ethanol, based on population age 14 and older] (Continued)

State or other geographic area	Per capita consumption				U.S. decile for all beverages
	Beer	Wine	Spirits	All beverages	
1996 .....	1.35	0.18	0.57	2.11	6
1995 .....	1.35	0.19	0.57	2.10	7
1994 .....	1.39	0.18	0.57	2.14	7
1993 .....	1.37	0.18	0.59	2.14	7
1992 .....	1.37	0.18	0.61	2.16	7
1991 .....	1.40	0.18	0.61	2.19	7
1990 .....	1.41	0.20	0.64	2.25	7
1989 .....	1.37	0.19	0.62	2.18	7
1988 .....	1.37	0.22	0.65	2.23	7
1987 .....	1.40	0.22	0.65	2.27	7
1986 .....	1.38	0.23	0.67	2.28	7
1985 .....	1.40	0.22	0.75	2.37	7
1984 .....	1.44	0.20	0.76	2.41	7
1983 .....	1.49	0.21	0.79	2.49	7
1982 .....	1.50	0.28	0.58	2.37	7
1981 .....	1.57	0.20	0.88	2.66	6
1980 .....	1.56	0.19	0.89	2.64	6
1979 .....	1.50	0.18	0.88	2.57	7
1978 .....	1.47	0.18	0.89	2.54	7
1977 .....	1.45	0.17	0.91	2.53	6
Nevada					
2010 .....	1.49	0.60	1.21	3.30	1
2009 .....	1.53	0.56	1.11	3.21	1
2008 .....	1.63	0.61	1.29	3.53	1
2007 .....	1.66	0.62	1.23	3.52	1
2006 .....	1.71	0.65	1.28	3.63	1
2005 .....	1.69	0.62	1.21	3.52	1
2004 .....	1.73	0.63	1.25	3.61	1
2003 .....	1.74	0.61	1.23	3.59	1
2002 .....	1.74	0.60	1.22	3.56	1
2001 .....	1.79	0.59	1.21	3.59	1
2000 .....	1.79	0.62	1.26	3.67	1
1999 .....	1.82	0.63	1.29	3.74	1
1998 .....	1.80	0.58	1.23	3.62	1
1997 .....	1.84	0.58	1.30	3.72	1
1996 .....	1.91	0.59	1.39	3.89	1
1995 .....	1.87	0.58	1.39	3.84	1
1994 .....	1.93	0.57	1.51	4.00	1
1993 .....	1.95	0.58	1.54	4.06	1
1992 .....	2.02	0.62	1.61	4.25	1
1991 .....	2.05	0.63	1.63	4.31	1
1990 .....	2.17	0.69	1.92	4.78	1
1989 .....	2.18	0.73	1.92	4.83	1
1988 .....	2.13	0.78	2.00	4.91	1
1987 .....	2.05	0.84	2.09	4.99	1
1986 .....	2.07	0.88	2.11	5.05	1
1985 .....	1.96	0.84	2.18	4.99	1
1984 .....	2.01	0.82	2.36	5.19	1
1983 .....	1.98	0.79	2.45	5.22	1
1982 .....	1.99	0.77	2.50	5.25	1
1981 .....	2.08	0.80	2.71	5.59	1
1980 .....	2.09	0.79	2.94	5.82	1

Decile values (1 = highest) apply only to State-level data. Numbers may not sum because of rounding.

Table 3. Per capita ethanol consumption for States, census regions, and the United States, 1977–2010. [Gallons of ethanol, based on population age 14 and older] (Continued)

State or other geographic area	Per capita consumption				U.S. decile for all beverages
	Beer	Wine	Spirits	All beverages	
1979 .....	2.28	0.88	3.28	6.44	1
1978 .....	2.20	0.85	3.65	6.69	1
1977 .....	2.15	0.83	3.85	6.84	1
New Hampshire					
2010 .....	1.75	0.85	1.85	4.44	1
2009 .....	1.74	0.84	1.84	4.41	1
2008 .....	1.71	0.81	1.79	4.31	1
2007 .....	1.74	0.74	1.75	4.23	1
2006 .....	1.73	0.72	1.77	4.22	1
2005 .....	1.74	0.71	1.70	4.16	1
2004 .....	1.73	0.71	1.67	4.12	1
2003 .....	1.75	0.71	1.63	4.09	1
2002 .....	1.75	0.70	1.64	4.09	1
2001 .....	1.75	0.66	1.62	4.03	1
2000 .....	1.75	0.56	1.69	4.01	1
1999 .....	1.75	0.56	1.70	4.01	1
1998 .....	1.72	0.54	1.73	3.98	1
1997 .....	1.73	0.55	1.76	4.04	1
1996 .....	1.73	0.55	1.85	4.13	1
1995 .....	1.74	0.51	1.87	4.12	1
1994 .....	1.75	0.48	1.90	4.13	1
1993 .....	1.83	0.54	2.01	4.38	1
1992 .....	1.81	0.52	1.96	4.30	1
1991 .....	1.85	0.49	1.96	4.30	1
1990 .....	1.85	0.49	1.97	4.30	1
1989 .....	1.87	0.50	1.99	4.37	1
1988 .....	1.91	0.49	1.94	4.33	1
1987 .....	1.93	0.50	1.98	4.41	1
1986 .....	1.93	0.52	2.06	4.51	1
1985 .....	1.99	0.53	2.21	4.73	1
1984 .....	1.99	0.59	2.33	4.91	1
1983 .....	2.17	0.56	2.35	5.08	1
1982 .....	1.89	0.58	2.34	4.81	1
1981 .....	1.89	0.59	2.44	4.92	1
1980 .....	2.21	0.69	2.86	5.76	1
1979 .....	1.98	0.62	2.61	5.20	1
1978 .....	1.99	0.54	2.94	5.46	1
1977 .....	1.89	0.50	2.93	5.32	1
New Jersey					
2010 .....	0.92	0.57	0.86	2.35	5
2009 .....	0.91	0.57	0.86	2.34	6
2008 .....	0.94	0.55	0.86	2.35	6
2007 .....	0.93	0.55	0.86	2.33	6
2006 .....	0.95	0.54	0.85	2.33	6
2005 .....	0.95	0.52	0.83	2.30	5
2004 .....	0.96	0.52	0.82	2.30	6
2003 .....	0.95	0.50	0.80	2.25	6
2002 .....	0.98	0.49	0.77	2.24	6
2001 .....	0.99	0.47	0.75	2.20	6
2000 .....	0.96	0.47	0.77	2.19	6

Decile values (1 = highest) apply only to State-level data. Numbers may not sum because of rounding.

Table 3. Per capita ethanol consumption for States, census regions, and the United States, 1977–2010. [Gallons of ethanol, based on population age 14 and older] (Continued)

State or other geographic area	Per capita consumption				U.S. decile for all beverages
	Beer	Wine	Spirits	All beverages	
1999 .....	0.97	0.46	0.71	2.14	7
1998 .....	0.98	0.46	0.69	2.12	7
1997 .....	0.98	0.42	0.74	2.15	6
1996 .....	1.00	0.44	0.76	2.20	6
1995 .....	1.03	0.44	0.75	2.22	5
1994 .....	1.04	0.43	0.79	2.27	5
1993 .....	1.07	0.42	0.79	2.29	5
1992 .....	1.07	0.44	0.83	2.34	5
1991 .....	1.09	0.43	0.82	2.34	6
1990 .....	1.15	0.48	0.95	2.58	4
1989 .....	1.13	0.50	0.96	2.59	3
1988 .....	1.15	0.51	0.93	2.58	4
1987 .....	1.18	0.54	1.01	2.72	4
1986 .....	1.18	0.56	1.03	2.77	4
1985 .....	1.18	0.55	1.08	2.81	4
1984 .....	1.19	0.55	1.10	2.83	4
1983 .....	1.21	0.52	1.13	2.86	4
1982 .....	1.22	0.52	1.13	2.87	4
1981 .....	1.22	0.51	1.15	2.87	5
1980 .....	1.23	0.47	1.13	2.83	5
1979 .....	1.18	0.43	1.10	2.71	6
1978 .....	1.17	0.42	1.10	2.69	6
1977 .....	1.16	0.40	1.13	2.69	5
New Mexico					
2010 .....	1.23	0.31	0.74	2.28	6
2009 .....	1.34	0.32	0.72	2.38	5
2008 .....	1.41	0.31	0.71	2.44	5
2007 .....	1.39	0.30	0.70	2.39	5
2006 .....	1.37	0.30	0.69	2.36	5
2005 .....	1.47	0.29	0.66	2.42	5
2004 .....	1.45	0.25	0.66	2.36	5
2003 .....	1.52	0.27	0.61	2.40	4
2002 .....	1.53	0.26	0.61	2.40	4
2001 .....	1.54	0.25	0.61	2.39	4
2000 .....	1.53	0.25	0.61	2.38	3
1999 .....	1.53	0.25	0.59	2.36	4
1998 .....	1.49	0.24	0.58	2.31	4
1997 .....	1.51	0.24	0.58	2.33	3
1996 .....	1.55	0.24	0.59	2.38	3
1995 .....	1.56	0.24	0.60	2.40	3
1994 .....	1.46	0.19	0.60	2.25	5
1993 .....	1.53	0.23	0.63	2.39	3
1992 .....	1.56	0.25	0.66	2.47	4
1991 .....	1.64	0.26	0.64	2.54	3
1990 .....	1.68	0.28	0.68	2.64	3
1989 .....	1.64	0.29	0.65	2.58	4
1988 .....	1.63	0.33	0.67	2.64	4
1987 .....	1.63	0.35	0.67	2.65	4
1986 .....	1.64	0.35	0.70	2.70	4
1985 .....	1.70	0.36	0.77	2.83	4
1984 .....	1.71	0.28	0.76	2.75	5

Decile values (1 = highest) apply only to State-level data. Numbers may not sum because of rounding.

Table 3. Per capita ethanol consumption for States, census regions, and the United States, 1977–2010. [Gallons of ethanol, based on population age 14 and older] (Continued)

State or other geographic area	Per capita consumption				U.S. decile for all beverages
	Beer	Wine	Spirits	All beverages	
1983 .....	1.72	0.31	0.98	3.00	4
1982 .....	1.72	0.34	0.94	3.00	4
1981 .....	1.74	0.32	0.95	3.01	4
1980 .....	1.66	0.32	1.00	2.99	4
1979 .....	1.71	0.30	1.01	3.02	4
1978 .....	1.68	0.32	0.98	2.99	4
1977 .....	1.65	0.32	0.96	2.93	4
New York					
2010 .....	0.89	0.48	0.71	2.09	8
2009 .....	0.92	0.47	0.70	2.08	8
2008 .....	0.93	0.47	0.68	2.08	8
2007 .....	0.93	0.47	0.69	2.10	8
2006 .....	0.89	0.46	0.66	2.01	8
2005 .....	0.91	0.43	0.65	1.99	8
2004 .....	0.92	0.42	0.62	1.96	9
2003 .....	0.93	0.40	0.61	1.94	9
2002 .....	0.95	0.38	0.59	1.92	9
2001 .....	0.96	0.37	0.56	1.89	9
2000 .....	0.92	0.38	0.58	1.88	9
1999 .....	0.93	0.37	0.56	1.85	9
1998 .....	0.95	0.38	0.51	1.84	9
1997 .....	0.94	0.37	0.57	1.87	8
1996 .....	0.97	0.36	0.57	1.90	8
1995 .....	0.98	0.38	0.57	1.93	8
1994 .....	0.98	0.35	0.60	1.93	8
1993 .....	1.00	0.35	0.62	1.98	8
1992 .....	1.04	0.37	0.68	2.09	8
1991 .....	1.09	0.37	0.69	2.14	7
1990 .....	1.13	0.41	0.76	2.30	7
1989 .....	1.12	0.42	0.82	2.36	7
1988 .....	1.15	0.45	0.87	2.47	6
1987 .....	1.15	0.48	0.90	2.53	5
1986 .....	1.13	0.50	0.92	2.55	6
1985 .....	1.14	0.49	0.98	2.62	5
1984 .....	1.15	0.49	1.03	2.67	5
1983 .....	1.23	0.49	1.05	2.77	5
1982 .....	1.26	0.48	1.10	2.84	5
1981 .....	1.25	0.46	1.12	2.83	5
1980 .....	1.28	0.46	1.18	2.91	5
1979 .....	1.21	0.44	1.17	2.82	5
1978 .....	1.18	0.42	1.17	2.77	5
1977 .....	1.18	0.38	1.17	2.74	5
North Carolina					
2010 .....	1.08	0.35	0.57	2.00	9
2009 .....	1.09	0.33	0.57	1.99	9
2008 .....	1.13	0.34	0.57	2.03	9
2007 .....	1.15	0.33	0.56	2.04	9
2006 .....	1.14	0.32	0.54	2.01	8
2005 .....	1.13	0.30	0.54	1.96	9
2004 .....	1.16	0.30	0.53	1.99	8

Decile values (1 = highest) apply only to State-level data. Numbers may not sum because of rounding.

Table 3. Per capita ethanol consumption for States, census regions, and the United States, 1977–2010. [Gallons of ethanol, based on population age 14 and older] (Continued)

State or other geographic area	Per capita consumption				U.S. decile for all beverages
	Beer	Wine	Spirits	All beverages	
2003 .....	1.20	0.27	0.52	1.99	8
2002 .....	1.24	0.27	0.50	2.01	8
2001 .....	1.23	0.25	0.51	1.99	8
2000 .....	1.19	0.23	0.52	1.94	8
1999 .....	1.16	0.24	0.51	1.90	8
1998 .....	1.13	0.23	0.50	1.87	8
1997 .....	1.15	0.23	0.51	1.89	8
1996 .....	1.14	0.24	0.52	1.90	8
1995 .....	1.12	0.22	0.53	1.86	8
1994 .....	1.14	0.21	0.54	1.89	8
1993 .....	1.14	0.22	0.56	1.92	9
1992 .....	1.14	0.23	0.59	1.96	8
1991 .....	1.11	0.24	0.60	1.96	9
1990 .....	1.16	0.27	0.65	2.08	9
1989 .....	1.13	0.27	0.66	2.06	8
1988 .....	1.12	0.28	0.68	2.09	8
1987 .....	1.11	0.28	0.71	2.10	8
1986 .....	1.12	0.30	0.74	2.15	8
1985 .....	1.09	0.27	0.76	2.13	8
1984 .....	1.11	0.24	0.78	2.13	8
1983 .....	1.10	0.22	0.80	2.12	9
1982 .....	1.07	0.21	0.85	2.13	9
1981 .....	1.10	0.21	0.86	2.17	9
1980 .....	1.11	0.20	0.86	2.17	9
1979 .....	1.08	0.22	0.88	2.18	8
1978 .....	1.06	0.20	0.86	2.12	9
1977 .....	1.01	0.20	0.84	2.05	8
North Dakota					
2010 .....	1.49	0.25	1.19	2.93	2
2009 .....	1.58	0.24	1.13	2.95	2
2008 .....	1.59	0.23	1.11	2.93	2
2007 .....	1.53	0.23	1.06	2.82	2
2006 .....	1.50	0.20	1.00	2.70	2
2005 .....	1.48	0.18	0.94	2.60	2
2004 .....	1.49	0.18	0.82	2.49	3
2003 .....	1.53	0.17	0.85	2.56	2
2002 .....	1.50	0.16	0.83	2.50	3
2001 .....	1.46	0.15	0.81	2.42	3
2000 .....	1.47	0.15	0.79	2.40	3
1999 .....	1.49	0.15	0.78	2.42	3
1998 .....	1.45	0.13	0.76	2.35	3
1997 .....	1.40	0.13	0.77	2.30	4
1996 .....	1.40	0.13	0.77	2.29	4
1995 .....	1.35	0.16	0.77	2.28	4
1994 .....	1.39	0.15	0.78	2.32	4
1993 .....	1.37	0.15	0.84	2.36	4
1992 .....	1.38	0.15	0.85	2.39	5
1991 .....	1.43	0.16	0.86	2.44	4
1990 .....	1.47	0.17	0.93	2.56	4
1989 .....	1.38	0.17	0.84	2.38	6
1988 .....	1.38	0.19	0.86	2.43	6

Decile values (1 = highest) apply only to State-level data. Numbers may not sum because of rounding.



Table 3. Per capita ethanol consumption for States, census regions, and the United States, 1977–2010. [Gallons of ethanol, based on population age 14 and older] (Continued)

State or other geographic area	Per capita consumption				U.S. decile for all beverages
	Beer	Wine	Spirits	All beverages	
1987 .....	1.35	0.20	0.87	2.42	6
1986 .....	1.32	0.22	0.86	2.40	7
1985 .....	1.33	0.19	0.96	2.48	7
1984 .....	1.40	0.17	0.98	2.55	6
1983 .....	1.48	0.17	1.05	2.71	6
1982 .....	1.52	0.18	1.09	2.79	5
1981 .....	1.53	0.18	1.14	2.85	5
1980 .....	1.53	0.17	1.14	2.83	5
1979 .....	1.45	0.16	1.10	2.71	6
1978 .....	1.45	0.16	1.15	2.76	5
1977 .....	1.35	0.15	1.12	2.62	6
Ohio					
2010 .....	1.29	0.25	0.48	2.02	8
2009 .....	1.28	0.26	0.47	2.01	8
2008 .....	1.32	0.26	0.46	2.04	9
2007 .....	1.33	0.25	0.45	2.03	9
2006 .....	1.32	0.24	0.44	2.00	9
2005 .....	1.32	0.23	0.43	1.98	9
2004 .....	1.33	0.22	0.42	1.96	9
2003 .....	1.33	0.22	0.48	2.03	8
2002 .....	1.34	0.21	0.47	2.02	8
2001 .....	1.33	0.21	0.47	2.01	8
2000 .....	1.30	0.19	0.50	1.99	8
1999 .....	1.32	0.20	0.48	2.00	8
1998 .....	1.31	0.19	0.47	1.97	8
1997 .....	1.28	0.18	0.46	1.91	8
1996 .....	1.30	0.18	0.45	1.93	8
1995 .....	1.28	0.17	0.46	1.90	8
1994 .....	1.31	0.16	0.37	1.85	9
1993 .....	1.29	0.16	0.50	1.95	8
1992 .....	1.32	0.17	0.50	1.98	8
1991 .....	1.33	0.18	0.51	2.03	8
1990 .....	1.34	0.22	0.53	2.09	8
1989 .....	1.35	0.22	0.50	2.07	8
1988 .....	1.34	0.24	0.54	2.11	8
1987 .....	1.35	0.24	0.59	2.17	8
1986 .....	1.32	0.25	0.60	2.17	8
1985 .....	1.37	0.25	0.59	2.20	8
1984 .....	1.41	0.25	0.61	2.26	8
1983 .....	1.36	0.22	0.65	2.22	8
1982 .....	1.40	0.22	0.66	2.28	8
1981 .....	1.35	0.22	0.68	2.25	8
1980 .....	1.39	0.22	0.72	2.33	8
1979 .....	1.36	0.20	0.71	2.26	8
1978 .....	1.19	0.20	0.70	2.09	9
1977 .....	1.17	0.18	0.70	2.04	9
Oklahoma					
2010 .....	1.15	0.18	0.58	1.92	9
2009 .....	1.17	0.18	0.58	1.93	10
2008 .....	1.22	0.18	0.58	1.97	9

Decile values (1 = highest) apply only to State-level data. Numbers may not sum because of rounding.

Table 3. Per capita ethanol consumption for States, census regions, and the United States, 1977–2010. [Gallons of ethanol, based on population age 14 and older] (Continued)

State or other geographic area	Per capita consumption				U.S. decile for all beverages
	Beer	Wine	Spirits	All beverages	
2007 .....	1.17	0.17	0.57	1.91	9
2006 .....	1.14	0.17	0.56	1.87	10
2005 .....	1.09	0.16	0.55	1.80	10
2004 .....	1.11	0.13	0.46	1.70	10
2003 .....	1.06	0.13	0.74	1.93	9
2002 .....	1.12	0.13	0.58	1.82	10
2001 .....	1.11	0.12	0.43	1.65	10
2000 .....	1.13	0.12	0.44	1.69	10
1999 .....	1.11	0.12	0.44	1.68	10
1998 .....	1.12	0.12	0.43	1.68	10
1997 .....	1.10	0.12	0.43	1.65	10
1996 .....	1.09	0.12	0.45	1.66	10
1995 .....	1.10	0.12	0.44	1.66	10
1994 .....	1.15	0.13	0.50	1.78	9
1993 .....	1.11	0.11	0.48	1.70	10
1992 .....	1.13	0.13	0.55	1.81	9
1991 .....	1.09	0.13	0.54	1.76	10
1990 .....	1.12	0.14	0.55	1.81	10
1989 .....	1.05	0.13	0.53	1.70	10
1988 .....	1.05	0.14	0.50	1.69	10
1987 .....	1.04	0.15	0.57	1.76	10
1986 .....	1.04	0.15	0.61	1.80	10
1985 .....	1.04	0.15	0.68	1.87	10
1984 .....	1.01	0.16	0.74	1.91	9
1983 .....	1.05	0.16	0.77	1.98	9
1982 .....	1.17	0.16	0.83	2.17	8
1981 .....	1.14	0.16	0.83	2.13	9
1980 .....	1.08	0.16	0.71	1.95	9
1979 .....	1.05	0.13	0.80	1.98	9
1978 .....	1.08	0.14	0.82	2.04	9
1977 .....	1.07	0.14	0.78	1.98	9
Oregon					
2010 .....	1.19	0.49	0.83	2.51	4
2009 .....	1.28	0.49	0.82	2.59	3
2008 .....	1.22	0.49	0.83	2.54	4
2007 .....	1.30	0.50	0.81	2.60	3
2006 .....	1.27	0.49	0.78	2.55	3
2005 .....	1.24	0.49	0.75	2.47	4
2004 .....	1.23	0.49	0.72	2.44	4
2003 .....	1.20	0.47	0.69	2.36	5
2002 .....	1.22	0.46	0.66	2.34	5
2001 .....	1.22	0.43	0.65	2.30	5
2000 .....	1.20	0.44	0.64	2.28	5
1999 .....	1.21	0.43	0.63	2.27	5
1998 .....	1.20	0.43	0.61	2.25	5
1997 .....	1.19	0.44	0.60	2.24	5
1996 .....	1.23	0.44	0.61	2.27	5
1995 .....	1.21	0.42	0.59	2.23	5
1994 .....	1.23	0.37	0.62	2.21	6
1993 .....	1.24	0.43	0.64	2.31	5
1992 .....	1.29	0.46	0.67	2.41	4
1991 .....	1.28	0.44	0.67	2.38	5

Decile values (1 = highest) apply only to State-level data. Numbers may not sum because of rounding.

Table 3. Per capita ethanol consumption for States, census regions, and the United States, 1977–2010. [Gallons of ethanol, based on population age 14 and older] (Continued)

State or other geographic area	Per capita consumption				U.S. decile for all beverages
	Beer	Wine	Spirits	All beverages	
1990 .....	1.32	0.47	0.73	2.51	5
1989 .....	1.26	0.46	0.69	2.41	6
1988 .....	1.27	0.51	0.71	2.48	5
1987 .....	1.26	0.53	0.72	2.50	6
1986 .....	1.26	0.54	0.73	2.54	6
1985 .....	1.25	0.55	0.77	2.57	6
1984 .....	1.28	0.53	0.82	2.63	6
1983 .....	1.31	0.53	0.85	2.69	6
1982 .....	1.33	0.53	0.88	2.74	6
1981 .....	1.38	0.50	0.92	2.80	6
1980 .....	1.37	0.51	0.94	2.82	5
1979 .....	1.39	0.47	0.96	2.82	5
1978 .....	1.34	0.47	0.98	2.79	5
1977 .....	1.33	0.46	0.96	2.74	5
Pennsylvania					
2010 .....	1.35	0.22	0.63	2.20	7
2009 .....	1.35	0.22	0.61	2.18	8
2008 .....	1.34	0.23	0.60	2.17	8
2007 .....	1.32	0.24	0.58	2.14	8
2006 .....	1.29	0.24	0.57	2.10	8
2005 .....	1.29	0.24	0.55	2.07	8
2004 .....	1.30	0.24	0.54	2.08	8
2003 .....	1.30	0.23	0.51	2.05	8
2002 .....	1.35	0.22	0.49	2.06	8
2001 .....	1.32	0.20	0.48	2.00	8
2000 .....	1.21	0.21	0.47	1.90	9
1999 .....	1.20	0.21	0.46	1.87	9
1998 .....	1.21	0.19	0.45	1.86	9
1997 .....	1.20	0.19	0.44	1.84	9
1996 .....	1.22	0.19	0.45	1.86	9
1995 .....	1.23	0.18	0.45	1.86	9
1994 .....	1.28	0.18	0.47	1.93	8
1993 .....	1.31	0.17	0.48	1.96	8
1992 .....	1.30	0.18	0.51	1.99	8
1991 .....	1.36	0.17	0.52	2.05	8
1990 .....	1.42	0.18	0.55	2.15	8
1989 .....	1.36	0.18	0.56	2.10	7
1988 .....	1.39	0.19	0.53	2.11	8
1987 .....	1.38	0.20	0.61	2.20	8
1986 .....	1.38	0.21	0.64	2.23	8
1985 .....	1.37	0.21	0.65	2.22	8
1984 .....	1.37	0.21	0.66	2.25	8
1983 .....	1.41	0.22	0.67	2.29	8
1982 .....	1.44	0.23	0.70	2.36	8
1981 .....	1.42	0.23	0.72	2.37	8
1980 .....	1.45	0.22	0.71	2.39	7
1979 .....	1.42	0.22	0.73	2.37	8
1978 .....	1.36	0.21	0.74	2.32	8
1977 .....	1.35	0.20	0.74	2.29	8

Decile values (1 = highest) apply only to State-level data. Numbers may not sum because of rounding.

Table 3. Per capita ethanol consumption for States, census regions, and the United States, 1977–2010. [Gallons of ethanol, based on population age 14 and older] (Continued)

State or other geographic area	Per capita consumption				U.S. decile for all beverages
	Beer	Wine	Spirits	All beverages	
Rhode Island					
2010 .....	1.12	0.53	0.93	2.58	3
2009 .....	1.10	0.53	0.91	2.54	4
2008 .....	1.13	0.53	0.91	2.57	4
2007 .....	1.12	0.54	0.89	2.55	4
2006 .....	1.13	0.53	0.86	2.52	4
2005 .....	1.13	0.52	0.82	2.47	4
2004 .....	1.13	0.50	0.80	2.42	5
2003 .....	1.13	0.51	0.80	2.45	3
2002 .....	1.17	0.48	0.74	2.40	4
2001 .....	1.19	0.46	0.70	2.36	4
2000 .....	1.15	0.46	0.70	2.31	5
1999 .....	1.14	0.45	0.69	2.28	4
1998 .....	1.14	0.47	0.63	2.24	5
1997 .....	1.22	0.44	0.64	2.30	4
1996 .....	1.16	0.42	0.65	2.24	5
1995 .....	1.19	0.38	0.60	2.17	6
1994 .....	1.23	0.38	0.66	2.27	5
1993 .....	1.22	0.36	0.69	2.27	6
1992 .....	1.24	0.39	0.70	2.33	6
1991 .....	1.33	0.37	0.71	2.41	4
1990 .....	1.31	0.44	0.79	2.54	5
1989 .....	1.37	0.46	0.87	2.69	3
1988 .....	1.39	0.49	0.97	2.85	3
1987 .....	1.40	0.51	0.94	2.85	3
1986 .....	1.41	0.53	0.93	2.86	3
1985 .....	1.40	0.51	1.03	2.94	3
1984 .....	1.37	0.52	1.03	2.92	3
1983 .....	1.48	0.50	1.06	3.04	3
1982 .....	1.34	0.55	1.04	2.93	4
1981 .....	1.36	0.52	1.04	2.92	4
1980 .....	1.46	0.53	1.14	3.14	3
1979 .....	1.46	0.50	1.11	3.07	3
1978 .....	1.41	0.50	1.16	3.07	3
1977 .....	1.39	0.43	1.12	2.93	4
South Carolina					
2010 .....	1.30	0.24	0.77	2.31	6
2009 .....	1.34	0.24	0.76	2.35	5
2008 .....	1.39	0.24	0.76	2.39	5
2007 .....	1.42	0.24	0.76	2.42	5
2006 .....	1.45	0.24	0.76	2.44	5
2005 .....	1.41	0.24	0.75	2.39	5
2004 .....	1.44	0.24	0.76	2.43	5
2003 .....	1.38	0.23	0.74	2.35	5
2002 .....	1.46	0.22	0.67	2.36	4
2001 .....	1.45	0.22	0.65	2.32	4
2000 .....	1.45	0.22	0.70	2.37	4
1999 .....	1.43	0.22	0.72	2.38	3
1998 .....	1.42	0.21	0.72	2.35	3
1997 .....	1.40	0.19	0.71	2.30	4

Decile values (1 = highest) apply only to State-level data. Numbers may not sum because of rounding.

Table 3. Per capita ethanol consumption for States, census regions, and the United States, 1977–2010. [Gallons of ethanol, based on population age 14 and older] (Continued)

State or other geographic area	Per capita consumption				U.S. decile for all beverages
	Beer	Wine	Spirits	All beverages	
1996 .....	1.39	0.21	0.71	2.31	4
1995 .....	1.38	0.18	0.67	2.23	5
1994 .....	1.38	0.17	0.74	2.29	4
1993 .....	1.36	0.20	0.75	2.30	5
1992 .....	1.34	0.20	0.79	2.33	5
1991 .....	1.34	0.22	0.84	2.41	5
1990 .....	1.44	0.25	0.92	2.61	4
1989 .....	1.37	0.24	0.86	2.47	5
1988 .....	1.37	0.26	0.89	2.51	5
1987 .....	1.34	0.27	0.88	2.49	6
1986 .....	1.30	0.27	0.92	2.50	6
1985 .....	1.26	0.25	0.99	2.49	6
1984 .....	1.26	0.24	1.00	2.50	7
1983 .....	1.26	0.20	1.01	2.47	7
1982 .....	1.24	0.20	1.00	2.44	7
1981 .....	1.25	0.19	1.05	2.49	7
1980 .....	1.22	0.18	1.06	2.46	7
1979 .....	1.25	0.17	1.18	2.60	7
1978 .....	1.20	0.17	1.21	2.59	7
1977 .....	1.17	0.17	1.14	2.49	7
South Dakota					
2010 .....	1.52	0.24	0.92	2.69	3
2009 .....	1.54	0.22	0.89	2.65	3
2008 .....	1.57	0.22	0.87	2.66	3
2007 .....	1.52	0.22	0.86	2.61	3
2006 .....	1.52	0.19	0.79	2.50	4
2005 .....	1.50	0.19	0.83	2.52	3
2004 .....	1.51	0.18	0.76	2.44	4
2003 .....	1.51	0.16	0.74	2.41	4
2002 .....	1.51	0.16	0.70	2.37	4
2001 .....	1.47	0.15	0.71	2.32	4
2000 .....	1.44	0.15	0.68	2.27	5
1999 .....	1.43	0.14	0.70	2.27	5
1998 .....	1.42	0.13	0.68	2.24	5
1997 .....	1.36	0.13	0.69	2.18	6
1996 .....	1.36	0.13	0.68	2.18	6
1995 .....	1.34	0.12	0.73	2.20	6
1994 .....	1.38	0.12	0.73	2.24	5
1993 .....	1.35	0.12	0.73	2.20	6
1992 .....	1.37	0.15	0.74	2.26	6
1991 .....	1.37	0.15	0.76	2.27	6
1990 .....	1.36	0.18	0.80	2.34	6
1989 .....	1.25	0.15	0.70	2.09	8
1988 .....	1.21	0.16	0.76	2.13	8
1987 .....	1.24	0.19	0.79	2.22	8
1986 .....	1.22	0.19	0.81	2.23	8
1985 .....	1.22	0.18	0.94	2.34	8
1984 .....	1.27	0.17	0.89	2.33	7
1983 .....	1.30	0.17	0.95	2.43	7
1982 .....	1.29	0.18	0.98	2.45	7
1981 .....	1.32	0.19	1.05	2.56	7
1980 .....	1.30	0.18	1.07	2.56	7

Decile values (1 = highest) apply only to State-level data. Numbers may not sum because of rounding.

Table 3. Per capita ethanol consumption for States, census regions, and the United States, 1977–2010. [Gallons of ethanol, based on population age 14 and older] (Continued)

State or other geographic area	Per capita consumption				U.S. decile for all beverages
	Beer	Wine	Spirits	All beverages	
1979 .....	1.23	0.17	1.04	2.44	7
1978 .....	1.19	0.17	1.05	2.42	7
1977 .....	1.15	0.17	1.06	2.38	7
Tennessee					
2010 .....	1.04	0.22	0.61	1.88	10
2009 .....	1.05	0.21	0.57	1.82	10
2008 .....	1.09	0.20	0.57	1.86	10
2007 .....	1.13	0.20	0.56	1.88	10
2006 .....	1.14	0.19	0.56	1.89	9
2005 .....	1.19	0.19	0.55	1.92	9
2004 .....	1.22	0.18	0.53	1.93	9
2003 .....	1.27	0.18	0.52	1.96	9
2002 .....	1.17	0.17	0.51	1.86	9
2001 .....	1.13	0.16	0.50	1.79	9
2000 .....	1.21	0.15	0.50	1.86	9
1999 .....	1.21	0.15	0.49	1.86	9
1998 .....	1.19	0.15	0.50	1.84	9
1997 .....	1.16	0.16	0.50	1.82	9
1996 .....	1.18	0.15	0.51	1.84	9
1995 .....	1.18	0.15	0.52	1.84	9
1994 .....	1.18	0.15	0.53	1.86	9
1993 .....	1.20	0.14	0.54	1.87	9
1992 .....	1.21	0.14	0.56	1.90	9
1991 .....	1.19	0.13	0.54	1.87	9
1990 .....	1.22	0.14	0.60	1.96	9
1989 .....	1.18	0.14	0.59	1.90	9
1988 .....	1.20	0.14	0.60	1.95	9
1987 .....	1.17	0.15	0.62	1.94	9
1986 .....	1.17	0.16	0.63	1.96	9
1985 .....	1.11	0.16	0.67	1.94	9
1984 .....	1.11	0.15	0.70	1.95	9
1983 .....	1.10	0.14	0.69	1.93	10
1982 .....	1.13	0.14	0.70	1.96	10
1981 .....	1.14	0.13	0.72	1.98	10
1980 .....	1.10	0.12	0.69	1.92	9
1979 .....	1.14	0.11	0.73	1.98	9
1978 .....	1.16	0.11	0.72	1.99	9
1977 .....	1.10	0.10	0.71	1.91	10
Texas					
2010 .....	1.35	0.29	0.59	2.23	7
2009 .....	1.41	0.28	0.58	2.26	7
2008 .....	1.43	0.27	0.58	2.28	7
2007 .....	1.41	0.27	0.56	2.24	7
2006 .....	1.43	0.26	0.55	2.24	7
2005 .....	1.43	0.25	0.53	2.20	7
2004 .....	1.45	0.24	0.52	2.21	7
2003 .....	1.46	0.23	0.51	2.19	7
2002 .....	1.49	0.22	0.50	2.21	6
2001 .....	1.51	0.21	0.49	2.21	6
2000 .....	1.53	0.22	0.50	2.25	5

Decile values (1 = highest) apply only to State-level data. Numbers may not sum because of rounding.

Table 3. Per capita ethanol consumption for States, census regions, and the United States, 1977–2010. [Gallons of ethanol, based on population age 14 and older] (Continued)

State or other geographic area	Per capita consumption				U.S. decile for all beverages
	Beer	Wine	Spirits	All beverages	
1999 .....	1.54	0.20	0.49	2.23	6
1998 .....	1.53	0.23	0.49	2.25	5
1997 .....	1.54	0.20	0.47	2.22	5
1996 .....	1.56	0.22	0.49	2.26	5
1995 .....	1.55	0.19	0.49	2.23	5
1994 .....	1.60	0.20	0.51	2.31	4
1993 .....	1.60	0.20	0.53	2.33	4
1992 .....	1.65	0.24	0.55	2.45	4
1991 .....	1.60	0.25	0.55	2.40	5
1990 .....	1.64	0.26	0.58	2.47	6
1989 .....	1.62	0.26	0.58	2.46	5
1988 .....	1.61	0.28	0.59	2.47	6
1987 .....	1.61	0.29	0.61	2.51	6
1986 .....	1.67	0.31	0.65	2.63	5
1985 .....	1.68	0.30	0.73	2.70	5
1984 .....	1.74	0.28	0.79	2.82	4
1983 .....	1.73	0.27	0.79	2.79	5
1982 .....	1.83	0.18	0.84	2.85	4
1981 .....	1.84	0.24	0.85	2.93	4
1980 .....	1.77	0.22	0.81	2.80	6
1979 .....	1.76	0.14	0.87	2.77	5
1978 .....	1.70	0.14	0.84	2.68	6
1977 .....	1.63	0.14	0.81	2.58	6
Utah					
2010 .....	0.70	0.18	0.47	1.35	10
2009 .....	0.72	0.17	0.47	1.36	10
2008 .....	0.77	0.17	0.47	1.41	10
2007 .....	0.78	0.16	0.44	1.38	10
2006 .....	0.73	0.16	0.44	1.33	10
2005 .....	0.70	0.16	0.41	1.27	10
2004 .....	0.75	0.15	0.39	1.30	10
2003 .....	0.76	0.15	0.39	1.30	10
2002 .....	0.77	0.14	0.39	1.30	10
2001 .....	0.76	0.14	0.39	1.29	10
2000 .....	0.77	0.11	0.40	1.27	10
1999 .....	0.79	0.10	0.38	1.27	10
1998 .....	0.73	0.10	0.37	1.20	10
1997 .....	0.76	0.10	0.39	1.25	10
1996 .....	0.77	0.10	0.37	1.24	10
1995 .....	0.75	0.09	0.37	1.21	10
1994 .....	0.76	0.09	0.38	1.24	10
1993 .....	0.78	0.11	0.39	1.28	10
1992 .....	0.79	0.12	0.42	1.33	10
1991 .....	0.80	0.12	0.43	1.34	10
1990 .....	0.80	0.12	0.46	1.39	10
1989 .....	0.82	0.13	0.47	1.42	10
1988 .....	0.83	0.14	0.49	1.45	10
1987 .....	0.84	0.15	0.50	1.49	10
1986 .....	0.89	0.17	0.52	1.58	10
1985 .....	0.90	0.15	0.53	1.58	10
1984 .....	0.88	0.14	0.52	1.53	10

Decile values (1 = highest) apply only to State-level data. Numbers may not sum because of rounding.

Table 3. Per capita ethanol consumption for States, census regions, and the United States, 1977–2010. [Gallons of ethanol, based on population age 14 and older] (Continued)

State or other geographic area	Per capita consumption				U.S. decile for all beverages
	Beer	Wine	Spirits	All beverages	
1983 .....	0.88	0.14	0.50	1.52	10
1982 .....	1.01	0.15	0.55	1.71	10
1981 .....	1.01	0.15	0.58	1.74	10
1980 .....	0.96	0.14	0.60	1.71	10
1979 .....	0.97	0.16	0.62	1.75	10
1978 .....	0.96	0.15	0.61	1.72	10
1977 .....	0.97	0.14	0.59	1.70	10
Vermont					
2010 .....	1.38	0.65	0.71	2.74	2
2009 .....	1.36	0.63	0.70	2.69	2
2008 .....	1.37	0.62	0.71	2.70	3
2007 .....	1.37	0.61	0.70	2.68	3
2006 .....	1.35	0.58	0.69	2.62	3
2005 .....	1.34	0.56	0.68	2.58	3
2004 .....	1.34	0.55	0.66	2.55	3
2003 .....	1.34	0.52	0.65	2.50	3
2002 .....	1.34	0.50	0.63	2.47	3
2001 .....	1.30	0.48	0.63	2.41	3
2000 .....	1.23	0.47	0.63	2.34	4
1999 .....	1.23	0.47	0.62	2.32	4
1998 .....	1.25	0.47	0.62	2.34	4
1997 .....	1.23	0.46	0.63	2.33	4
1996 .....	1.29	0.46	0.64	2.38	3
1995 .....	1.27	0.41	0.66	2.34	3
1994 .....	1.34	0.42	0.74	2.50	3
1993 .....	1.34	0.44	0.74	2.52	2
1992 .....	1.35	0.44	0.78	2.57	3
1991 .....	1.41	0.46	0.82	2.69	2
1990 .....	1.47	0.48	0.85	2.80	2
1989 .....	1.45	0.51	0.88	2.84	2
1988 .....	1.51	0.56	0.93	3.00	2
1987 .....	1.56	0.58	0.98	3.11	1
1986 .....	1.55	0.59	1.04	3.17	1
1985 .....	1.49	0.55	1.09	3.13	2
1984 .....	1.48	0.49	1.15	3.12	2
1983 .....	1.52	0.50	1.19	3.21	2
1982 .....	1.49	0.50	1.25	3.24	2
1981 .....	1.49	0.50	1.33	3.32	2
1980 .....	1.43	0.48	1.39	3.30	2
1979 .....	1.57	0.47	1.50	3.54	1
1978 .....	1.53	0.47	1.59	3.59	1
1977 .....	1.42	0.44	1.58	3.44	1
Virginia					
2010 .....	1.08	0.44	0.59	2.11	8
2009 .....	1.10	0.42	0.58	2.11	8
2008 .....	1.12	0.42	0.58	2.12	8
2007 .....	1.13	0.41	0.58	2.11	8
2006 .....	1.13	0.39	0.56	2.08	8
2005 .....	1.13	0.38	0.55	2.06	8
2004 .....	1.14	0.37	0.54	2.06	8

Decile values (1 = highest) apply only to State-level data. Numbers may not sum because of rounding.



Table 3. Per capita ethanol consumption for States, census regions, and the United States, 1977–2010. [Gallons of ethanol, based on population age 14 and older] (Continued)

State or other geographic area	Per capita consumption				U.S. decile for all beverages
	Beer	Wine	Spirits	All beverages	
2003 .....	1.14	0.36	0.53	2.03	8
2002 .....	1.15	0.34	0.51	2.00	8
2001 .....	1.15	0.32	0.50	1.97	8
2000 .....	1.16	0.31	0.50	1.97	8
1999 .....	1.18	0.32	0.47	1.96	8
1998 .....	1.18	0.29	0.47	1.94	8
1997 .....	1.13	0.29	0.48	1.90	8
1996 .....	1.13	0.30	0.49	1.92	8
1995 .....	1.15	0.29	0.49	1.93	8
1994 .....	1.20	0.27	0.51	1.99	8
1993 .....	1.24	0.27	0.54	2.05	8
1992 .....	1.25	0.28	0.57	2.10	7
1991 .....	1.20	0.28	0.58	2.06	8
1990 .....	1.25	0.30	0.62	2.18	8
1989 .....	1.23	0.31	0.65	2.19	7
1988 .....	1.31	0.25	0.68	2.24	7
1987 .....	1.40	0.26	0.71	2.36	7
1986 .....	1.52	0.27	0.73	2.53	6
1985 .....	1.46	0.30	0.79	2.55	6
1984 .....	1.46	0.29	0.80	2.55	6
1983 .....	1.47	0.27	0.82	2.57	6
1982 .....	1.45	0.27	0.86	2.59	6
1981 .....	1.23	0.27	0.89	2.39	7
1980 .....	1.23	0.25	0.91	2.39	7
1979 .....	1.23	0.25	0.92	2.40	8
1978 .....	1.22	0.21	0.90	2.33	8
1977 .....	1.19	0.21	0.90	2.30	7
Washington					
2010 .....	0.97	0.52	0.73	2.21	7
2009 .....	1.09	0.51	0.74	2.33	6
2008 .....	1.09	0.50	0.75	2.35	6
2007 .....	1.11	0.50	0.74	2.35	6
2006 .....	1.05	0.48	0.72	2.25	6
2005 .....	1.05	0.47	0.71	2.24	6
2004 .....	1.06	0.47	0.70	2.22	6
2003 .....	1.06	0.47	0.68	2.20	6
2002 .....	1.08	0.43	0.66	2.17	7
2001 .....	1.08	0.40	0.65	2.13	7
2000 .....	1.09	0.41	0.66	2.16	7
1999 .....	1.10	0.40	0.63	2.13	7
1998 .....	1.12	0.43	0.63	2.18	6
1997 .....	1.11	0.42	0.63	2.16	6
1996 .....	1.13	0.40	0.63	2.16	6
1995 .....	1.14	0.40	0.63	2.17	6
1994 .....	1.18	0.39	0.65	2.23	6
1993 .....	1.19	0.39	0.69	2.27	5
1992 .....	1.26	0.46	0.72	2.44	4
1991 .....	1.23	0.43	0.73	2.39	5
1990 .....	1.27	0.46	0.76	2.49	5
1989 .....	1.24	0.47	0.75	2.45	5
1988 .....	1.22	0.50	0.77	2.49	5

Decile values (1 = highest) apply only to State-level data. Numbers may not sum because of rounding.

Table 3. Per capita ethanol consumption for States, census regions, and the United States, 1977–2010. [Gallons of ethanol, based on population age 14 and older] (Continued)

State or other geographic area	Per capita consumption				U.S. decile for all beverages
	Beer	Wine	Spirits	All beverages	
1987 .....	1.23	0.56	0.79	2.58	5
1986 .....	1.23	0.61	0.82	2.65	5
1985 .....	1.22	0.59	0.87	2.68	5
1984 .....	1.24	0.57	0.91	2.71	5
1983 .....	1.29	0.54	0.94	2.76	5
1982 .....	1.33	0.53	0.99	2.85	4
1981 .....	1.38	0.54	1.05	2.97	4
1980 .....	1.52	0.52	1.08	3.12	3
1979 .....	1.41	0.48	1.10	2.99	4
1978 .....	1.39	0.48	1.09	2.96	4
1977 .....	1.36	0.45	1.08	2.89	4
West Virginia					
2010 .....	1.23	0.15	0.44	1.83	10
2009 .....	1.22	0.10	0.44	1.76	10
2008 .....	1.24	0.10	0.43	1.78	10
2007 .....	1.22	0.10	0.42	1.74	10
2006 .....	1.21	0.10	0.41	1.72	10
2005 .....	1.23	0.10	0.40	1.73	10
2004 .....	1.25	0.10	0.39	1.75	10
2003 .....	1.23	0.10	0.38	1.72	10
2002 .....	1.26	0.10	0.38	1.74	10
2001 .....	1.23	0.10	0.37	1.70	10
2000 .....	1.18	0.10	0.35	1.64	10
1999 .....	1.18	0.10	0.37	1.66	10
1998 .....	1.17	0.10	0.36	1.63	10
1997 .....	1.14	0.10	0.37	1.60	10
1996 .....	1.14	0.10	0.37	1.61	10
1995 .....	1.14	0.09	0.38	1.61	10
1994 .....	1.17	0.08	0.39	1.64	10
1993 .....	1.18	0.08	0.40	1.67	10
1992 .....	1.16	0.09	0.41	1.66	10
1991 .....	1.18	0.09	0.43	1.70	10
1990 .....	1.20	0.10	0.42	1.72	10
1989 .....	1.12	0.11	0.38	1.60	10
1988 .....	1.12	0.12	0.40	1.64	10
1987 .....	1.11	0.13	0.41	1.64	10
1986 .....	1.10	0.13	0.41	1.64	10
1985 .....	1.11	0.13	0.42	1.66	10
1984 .....	1.12	0.12	0.44	1.68	10
1983 .....	1.13	0.13	0.48	1.74	10
1982 .....	1.11	0.14	0.55	1.80	10
1981 .....	1.06	0.14	0.66	1.85	10
1980 .....	1.00	0.09	0.72	1.82	10
1979 .....	0.97	0.09	0.77	1.83	10
1978 .....	0.96	0.09	0.79	1.84	10
1977 .....	0.98	0.09	0.78	1.85	10
Wisconsin					
2010 .....	1.31	0.32	1.13	2.76	2
2009 .....	1.49	0.31	1.16	2.96	2
2008 .....	1.54	0.34	1.12	3.00	1

Decile values (1 = highest) apply only to State-level data. Numbers may not sum because of rounding.

Table 3. Per capita ethanol consumption for States, census regions, and the United States, 1977–2010. [Gallons of ethanol, based on population age 14 and older] (Continued)

State or other geographic area	Per capita consumption				U.S. decile for all beverages
	Beer	Wine	Spirits	All beverages	
2007 .....	1.54	0.33	1.11	2.98	1
2006 .....	1.56	0.32	1.09	2.97	1
2005 .....	1.55	0.31	1.07	2.93	1
2004 .....	1.53	0.30	1.02	2.85	1
2003 .....	1.53	0.29	1.00	2.82	2
2002 .....	1.56	0.28	0.98	2.82	2
2001 .....	1.54	0.26	0.95	2.75	2
2000 .....	1.53	0.27	0.95	2.76	1
1999 .....	1.53	0.26	0.92	2.72	2
1998 .....	1.61	0.26	0.79	2.65	2
1997 .....	1.57	0.25	0.89	2.71	1
1996 .....	1.53	0.24	0.88	2.65	1
1995 .....	1.55	0.23	0.87	2.65	1
1994 .....	1.58	0.22	0.91	2.72	2
1993 .....	1.59	0.22	0.89	2.71	1
1992 .....	1.59	0.25	0.90	2.74	2
1991 .....	1.65	0.27	0.84	2.76	1
1990 .....	1.74	0.31	1.03	3.07	1
1989 .....	1.71	0.31	0.95	2.96	1
1988 .....	1.75	0.33	0.95	3.02	2
1987 .....	1.78	0.36	0.97	3.11	2
1986 .....	1.87	0.34	0.95	3.16	2
1985 .....	1.82	0.32	1.05	3.19	1
1984 .....	1.86	0.30	1.03	3.19	2
1983 .....	1.93	0.33	1.07	3.33	2
1982 .....	1.93	0.30	1.04	3.27	2
1981 .....	1.95	0.31	1.20	3.47	1
1980 .....	1.96	0.31	1.20	3.46	1
1979 .....	1.88	0.28	1.17	3.33	3
1978 .....	1.80	0.28	1.18	3.25	2
1977 .....	1.78	0.27	1.26	3.31	2
Wyoming					
2010 .....	1.33	0.22	1.06	2.61	3
2009 .....	1.40	0.22	1.07	2.69	3
2008 .....	1.50	0.22	1.09	2.82	2
2007 .....	1.46	0.23	1.08	2.76	2
2006 .....	1.44	0.23	1.03	2.69	3
2005 .....	1.20	0.22	0.96	2.38	5
2004 .....	1.42	0.22	0.92	2.56	2
2003 .....	1.70	0.23	0.91	2.84	1
2002 .....	1.46	0.23	0.88	2.57	2
2001 .....	1.44	0.22	0.88	2.53	2
2000 .....	1.42	0.18	0.86	2.46	3
1999 .....	1.41	0.18	0.84	2.43	3
1998 .....	1.38	0.20	0.81	2.40	3
1997 .....	1.36	0.17	0.81	2.33	3
1996 .....	1.37	0.16	0.81	2.34	3
1995 .....	1.34	0.16	0.80	2.29	4
1994 .....	1.42	0.18	0.83	2.43	3
1993 .....	1.40	0.19	0.86	2.45	3
1992 .....	1.44	0.20	0.91	2.56	3
1991 .....	1.45	0.20	0.90	2.56	3

Decile values (1 = highest) apply only to State-level data. Numbers may not sum because of rounding.

Table 3. Per capita ethanol consumption for States, census regions, and the United States, 1977–2010. [Gallons of ethanol, based on population age 14 and older] (Continued)

State or other geographic area	Per capita consumption				U.S. decile for all beverages
	Beer	Wine	Spirits	All beverages	
1990 .....	1.48	0.22	0.93	2.63	3
1989 .....	1.35	0.22	0.82	2.38	6
1988 .....	1.39	0.23	0.83	2.46	6
1987 .....	1.46	0.24	0.86	2.56	5
1986 .....	1.46	0.26	0.92	2.64	5
1985 .....	1.56	0.25	1.03	2.84	3
1984 .....	1.58	0.22	1.05	2.86	4
1983 .....	1.66	0.22	1.09	2.98	4
1982 .....	1.80	0.24	1.21	3.25	2
1981 .....	1.91	0.24	1.27	3.42	2
1980 .....	1.85	0.24	1.32	3.42	2
1979 .....	1.86	0.22	1.30	3.38	2
1978 .....	1.82	0.22	1.36	3.41	2
1977 .....	1.79	0.21	1.32	3.31	2
Northeast region					
2010 .....	1.06	0.47	0.78	2.30	
2009 .....	1.06	0.46	0.76	2.29	
2008 .....	1.08	0.46	0.75	2.30	
2007 .....	1.07	0.46	0.75	2.28	
2006 .....	1.06	0.45	0.74	2.25	
2005 .....	1.06	0.44	0.72	2.21	
2004 .....	1.07	0.43	0.70	2.20	
2003 .....	1.07	0.42	0.68	2.17	
2002 .....	1.10	0.40	0.66	2.16	
2001 .....	1.10	0.38	0.64	2.12	
2000 .....	1.06	0.38	0.66	2.10	
1999 .....	1.05	0.38	0.63	2.06	
1998 .....	1.07	0.37	0.60	2.04	
1997 .....	1.06	0.36	0.63	2.06	
1996 .....	1.08	0.36	0.64	2.07	
1995 .....	1.09	0.36	0.64	2.09	
1994 .....	1.11	0.34	0.67	2.12	
1993 .....	1.13	0.34	0.68	2.15	
1992 .....	1.14	0.35	0.72	2.21	
1991 .....	1.19	0.34	0.73	2.26	
1990 .....	1.23	0.38	0.80	2.41	
1989 .....	1.22	0.39	0.84	2.44	
1988 .....	1.25	0.40	0.86	2.52	
1987 .....	1.25	0.43	0.91	2.60	
1986 .....	1.25	0.44	0.93	2.62	
1985 .....	1.25	0.43	0.98	2.66	
1984 .....	1.25	0.43	1.01	2.70	
1983 .....	1.31	0.43	1.03	2.76	
1982 .....	1.31	0.43	1.05	2.79	
1981 .....	1.31	0.41	1.07	2.80	
1980 .....	1.34	0.40	1.10	2.84	
1979 .....	1.30	0.38	1.09	2.77	
1978 .....	1.26	0.36	1.10	2.73	
1977 .....	1.25	0.34	1.10	2.69	

Decile values (1 = highest) apply only to State-level data. Numbers may not sum because of rounding.

Table 3. Per capita ethanol consumption for States, census regions, and the United States, 1977–2010. [Gallons of ethanol, based on population age 14 and older] (Continued)

State or other geographic area	Per capita consumption				U.S. decile for all beverages
	Beer	Wine	Spirits	All beverages	
Midwest region					
2010 .....	1.21	0.30	0.77	2.28	
2009 .....	1.25	0.30	0.77	2.32	
2008 .....	1.27	0.30	0.76	2.32	
2007 .....	1.27	0.30	0.74	2.31	
2006 .....	1.26	0.28	0.72	2.27	
2005 .....	1.27	0.27	0.71	2.24	
2004 .....	1.28	0.26	0.68	2.22	
2003 .....	1.28	0.26	0.69	2.24	
2002 .....	1.31	0.24	0.66	2.21	
2001 .....	1.29	0.24	0.66	2.19	
2000 .....	1.29	0.23	0.66	2.18	
1999 .....	1.29	0.24	0.65	2.17	
1998 .....	1.28	0.23	0.63	2.14	
1997 .....	1.26	0.23	0.63	2.12	
1996 .....	1.27	0.23	0.62	2.12	
1995 .....	1.27	0.22	0.63	2.12	
1994 .....	1.30	0.22	0.63	2.14	
1993 .....	1.30	0.22	0.67	2.18	
1992 .....	1.31	0.23	0.68	2.21	
1991 .....	1.35	0.23	0.67	2.25	
1990 .....	1.38	0.26	0.74	2.37	
1989 .....	1.34	0.26	0.71	2.31	
1988 .....	1.36	0.28	0.74	2.38	
1987 .....	1.37	0.29	0.76	2.42	
1986 .....	1.37	0.30	0.78	2.44	
1985 .....	1.37	0.28	0.83	2.48	
1984 .....	1.39	0.27	0.84	2.50	
1983 .....	1.41	0.25	0.87	2.53	
1982 .....	1.42	0.27	0.88	2.56	
1981 .....	1.42	0.26	0.93	2.61	
1980 .....	1.42	0.24	0.96	2.63	
1979 .....	1.41	0.23	0.95	2.58	
1978 .....	1.35	0.22	0.96	2.53	
1977 .....	1.32	0.21	0.96	2.49	
South region					
2010 .....	1.17	0.32	0.69	2.18	
2009 .....	1.21	0.31	0.69	2.21	
2008 .....	1.24	0.31	0.68	2.23	
2007 .....	1.25	0.31	0.68	2.24	
2006 .....	1.27	0.30	0.67	2.23	
2005 .....	1.25	0.29	0.66	2.20	
2004 .....	1.27	0.29	0.64	2.20	
2003 .....	1.27	0.27	0.64	2.18	
2002 .....	1.28	0.26	0.62	2.16	
2001 .....	1.28	0.25	0.60	2.14	
2000 .....	1.30	0.25	0.61	2.16	
1999 .....	1.30	0.25	0.60	2.15	
1998 .....	1.28	0.24	0.60	2.12	
1997 .....	1.28	0.23	0.60	2.12	

Decile values (1 = highest) apply only to State-level data. Numbers may not sum because of rounding.

Table 3. Per capita ethanol consumption for States, census regions, and the United States, 1977–2010. [Gallons of ethanol, based on population age 14 and older] (Continued)

State or other geographic area	Per capita consumption				U.S. decile for all beverages
	Beer	Wine	Spirits	All beverages	
1996 .....	1.29	0.24	0.61	2.14	
1995 .....	1.29	0.22	0.61	2.12	
1994 .....	1.31	0.22	0.64	2.16	
1993 .....	1.33	0.22	0.66	2.20	
1992 .....	1.33	0.23	0.69	2.26	
1991 .....	1.31	0.23	0.69	2.23	
1990 .....	1.36	0.26	0.74	2.36	
1989 .....	1.33	0.26	0.73	2.31	
1988 .....	1.33	0.27	0.74	2.34	
1987 .....	1.33	0.27	0.77	2.37	
1986 .....	1.35	0.28	0.79	2.42	
1985 .....	1.33	0.27	0.85	2.46	
1984 .....	1.34	0.27	0.90	2.51	
1983 .....	1.36	0.25	0.91	2.52	
1982 .....	1.37	0.23	0.95	2.55	
1981 .....	1.36	0.24	0.98	2.58	
1980 .....	1.31	0.23	0.98	2.51	
1979 .....	1.32	0.21	1.03	2.55	
1978 .....	1.29	0.20	1.03	2.52	
1977 .....	1.25	0.19	1.01	2.44	
West region					
2010 .....	1.06	0.51	0.76	2.34	
2009 .....	1.12	0.51	0.77	2.39	
2008 .....	1.15	0.51	0.78	2.44	
2007 .....	1.17	0.50	0.77	2.44	
2006 .....	1.15	0.50	0.76	2.40	
2005 .....	1.13	0.48	0.73	2.35	
2004 .....	1.16	0.47	0.71	2.34	
2003 .....	1.17	0.46	0.69	2.32	
2002 .....	1.18	0.44	0.68	2.30	
2001 .....	1.19	0.43	0.68	2.30	
2000 .....	1.18	0.43	0.67	2.29	
1999 .....	1.19	0.42	0.65	2.27	
1998 .....	1.19	0.42	0.65	2.25	
1997 .....	1.20	0.43	0.65	2.28	
1996 .....	1.21	0.43	0.67	2.30	
1995 .....	1.22	0.40	0.66	2.28	
1994 .....	1.20	0.41	0.70	2.31	
1993 .....	1.26	0.42	0.72	2.39	
1992 .....	1.33	0.45	0.76	2.54	
1991 .....	1.30	0.44	0.76	2.50	
1990 .....	1.37	0.50	0.84	2.71	
1989 .....	1.36	0.51	0.84	2.71	
1988 .....	1.37	0.57	0.87	2.80	
1987 .....	1.39	0.62	0.89	2.90	
1986 .....	1.40	0.65	0.92	2.98	
1985 .....	1.37	0.65	1.00	3.02	
1984 .....	1.41	0.61	1.04	3.05	
1983 .....	1.42	0.61	1.07	3.11	
1982 .....	1.45	0.60	1.11	3.15	
1981 .....	1.49	0.60	1.16	3.26	
1980 .....	1.48	0.59	1.20	3.26	

Decile values (1 = highest) apply only to State-level data. Numbers may not sum because of rounding.

Table 3. Per capita ethanol consumption for States, census regions, and the United States, 1977–2010. [Gallons of ethanol, based on population age 14 and older] (Continued)

State or other geographic area	Per capita consumption				U.S. decile for all beverages
	Beer	Wine	Spirits	All beverages	
1979 .....	1.49	0.58	1.24	3.31	
1978 .....	1.43	0.56	1.27	3.26	
1977 .....	1.38	0.54	1.22	3.15	
U.S. total					
2010 .....	1.13	0.39	0.74	2.26	
2009 .....	1.17	0.38	0.74	2.29	
2008 .....	1.20	0.38	0.73	2.31	
2007 .....	1.20	0.38	0.73	2.31	
2006 .....	1.20	0.37	0.71	2.28	
2005 .....	1.19	0.36	0.70	2.24	
2004 .....	1.21	0.35	0.68	2.24	
2003 .....	1.21	0.34	0.67	2.22	
2002 .....	1.23	0.33	0.65	2.21	
2001 .....	1.23	0.31	0.64	2.18	
2000 .....	1.22	0.31	0.64	2.18	
1999 .....	1.23	0.31	0.63	2.16	
1998 .....	1.22	0.30	0.62	2.14	
1997 .....	1.22	0.30	0.62	2.14	
1996 .....	1.23	0.30	0.63	2.16	
1995 .....	1.23	0.29	0.63	2.15	
1994 .....	1.25	0.28	0.65	2.18	
1993 .....	1.26	0.28	0.68	2.23	
1992 .....	1.29	0.30	0.71	2.30	
1991 .....	1.29	0.30	0.71	2.30	
1990 .....	1.34	0.33	0.77	2.45	
1989 .....	1.31	0.34	0.77	2.42	
1988 .....	1.33	0.36	0.79	2.48	
1987 .....	1.34	0.38	0.82	2.54	
1986 .....	1.34	0.39	0.84	2.58	
1985 .....	1.33	0.38	0.90	2.62	
1984 .....	1.35	0.37	0.94	2.65	
1983 .....	1.37	0.36	0.96	2.69	
1982 .....	1.38	0.36	0.98	2.72	
1981 .....	1.39	0.35	1.02	2.76	
1980 .....	1.38	0.34	1.04	2.76	
1979 .....	1.37	0.32	1.06	2.75	
1978 .....	1.33	0.31	1.07	2.71	
1977 .....	1.29	0.29	1.06	2.64	

Decile values (1 = highest) apply only to State-level data. Numbers may not sum because of rounding.