



National Institute on Alcohol Abuse and Alcoholism
Division of Epidemiology and Prevention Research
Alcohol Epidemiologic Data System

SURVEILLANCE REPORT #92

APPARENT PER CAPITA ALCOHOL CONSUMPTION: NATIONAL, STATE, AND REGIONAL TRENDS, 1977–2009

Robin A. LaVallee, B.A.
Hsiao-ye Yi, Ph.D.

CSR, Incorporated¹
Suite 1000
2107 Wilson Boulevard
Arlington, VA 22201

August 2011

U.S. Department of Health and Human Services
Public Health Service
National Institutes of Health

¹ CSR, Incorporated operates the Alcohol Epidemiologic Data System (AEDS) under Contract No. HHSN267200800023C for the Division of Epidemiology and Prevention Research, National Institute on Alcohol Abuse and Alcoholism (NIAAA). Dr. Rosalind A. Breslow serves as NIAAA Project Officer on the contract.

(Blank page)

HIGHLIGHTS

This surveillance report on 1977–2009 apparent per capita alcohol consumption in the United States is the 25th in a series of consumption reports produced annually by the National Institute on Alcohol Abuse and Alcoholism (NIAAA). Findings are based on alcoholic beverage sales data, either collected directly by the Alcohol Epidemiologic Data System (AEDS) from the States or provided by beverage industry sources. Population data provided by the U.S. Census Bureau are used as denominators to calculate per capita rates. The following are highlights from the current report, which updates consumption trends through 2009:

- In the United States, per capita consumption of ethanol from all alcoholic beverages combined in 2009 was 2.30 gallons, representing a 0.9 percent decrease from 2.32 gallons in 2008.
- Between 2008 and 2009, changes in overall per capita consumption of ethanol included increases in 9 States, decreases in 34 States and the District of Columbia, and no change in 7 States.
- Analysis of overall per capita alcohol consumption by census region between 2008 and 2009 indicated decreases of 0.4% in the Midwest, 0.9% in the South, and 1.3% in the West, with no change in the Northeast.
- Healthy People 2010 has set the national objective for reducing per capita alcohol consumption to no more than 1.96 gallons of ethanol. However, the prospect of reaching the Year 2010 national objective does not appear promising. From 1999 to 2008, there was a trend of increasing per capita consumption. 2009 is the first year in a decade in which a decrease in per capita consumption has been observed. To meet the 2010 objective, per capita alcohol consumption will need to decrease by 14.8 percent within one year.

INTRODUCTION

This surveillance report on per capita consumption of alcohol in the United States is the 25th in a series of reports that examine alcohol consumption trends on a national, State, and regional basis. Like previous reports on per capita alcohol consumption, it is intended to provide updated alcohol information for policymakers, health care providers, researchers, and others concerned about alcohol issues.

Data presented in this report are related to one of the national objectives set in Healthy People 2010 (U.S. Department of Health and Human Services 2000) for alcohol consumption. This objective is to reduce the national per capita alcohol consumption level to no more than 1.96 gallons of ethanol by 2010 (National Center for Health Statistics 2008).

The current report updates the 1977–2008 alcohol consumption trends (LaVallee and Yi

2010) with new data for 2009. Data are presented in three tables. The first one presents national data on trends in beer, wine, and spirits consumption, as well as on all alcoholic beverages combined. The second table presents data on alcohol consumption for individual States for 2009. States also are ranked in deciles according to per capita ethanol consumption. The third table presents data on consumption trends for each type of beverage and all beverages combined for the States as well as for the four regions defined by the U.S. Census Bureau: Northeast, Midwest, South, and West.

DATA

Alcohol Consumption Data

AEDS makes every effort to obtain alcoholic beverage sales data from all States and the District of Columbia because sales data more accurately reflect actual consumption of alcoholic beverages than do production and

shipments data from beverage industry sources. For 2009, AEDS received complete beverage sales and/or tax receipts reports from 29 States for beer, 29 States for wine, and 25 States for spirits.¹ For the remaining States and the District of Columbia, shipments data from beverage industry sources (Beverage Information Group 2010*a, b, c*) were used for the numerator to calculate per capita consumption. Although sales and tax receipt data tend to provide slightly lower per capita estimates (about .01 to .02 points per capita), the mixed use of data from sales and shipments sources appears to have little effect on overall trends in per capita alcohol consumption (Campbell et al. 1994).

Population Data

State population estimates for persons ages 14 and older were obtained from Internet releases by the U.S. Census Bureau (2010). These data are used as denominators to calculate the per capita consumption figures.

To make the trend data more precise, AEDS revises data published in previous reports when the Census Bureau makes major revisions to its population estimates. One such revision occurred in the report published in 2003 (Nephew et al. 2003). Beginning with that report, the 1990s population estimates used in the past were replaced with the reestimated intercensal population data that bridge the 1990 and 2000 censuses (U.S. Census Bureau 2002). Because the new population estimates were generally higher than the old estimates, this revision resulted in slight decreases in calculated per capita ethanol consumption for the 1990s

¹ The following 33 States provided alcoholic beverage sales data for beer, wine, and/or, spirits for 2009: Alaska, Arizona, Colorado, Connecticut, Florida, Idaho, Indiana, Kansas, Kentucky, Louisiana, Maryland, Massachusetts, Michigan, Minnesota, Missouri, Montana, Nevada, New Hampshire, New Jersey, New Mexico, New York, North Carolina, North Dakota, Ohio, Oregon, Pennsylvania, South Dakota, Texas, Utah, Virginia, Washington, Wisconsin, Wyoming.

(especially the later part of the decade). Although most of these changes are minor, one impact of the revision is the change to the baseline number cited by Healthy People 2010 (U.S. Department of Health and Human Services 2000) to set the national health objective for reducing per capita alcohol consumption. The baseline year was 1997, the latest data year available at the time the document was prepared. The revised data changed the 1997 baseline number from 2.18 to 2.14 gallons of ethanol per capita. Accordingly, the 2010 national health objective was adjusted from 2.00 to 1.96 gallons of ethanol per capita (National Center for Health Statistics 2008).

METHODS

Conversion of Ethanol Content

AEDS uses an estimate of average ethanol content in the alcoholic beverages to convert the gallons of sold or shipped beer, wine, and spirits into gallons of ethanol (pure alcohol) before calculating per capita consumption estimates. The ethanol conversion coefficients (ECC, i.e., proportion of pure alcohol for each beverage type) are 0.045 for beer, 0.129 for wine, and 0.411 for spirits.

AEDS has considered changes in the alcoholic beverage market that may affect the ECCs used in the current report. For instance, the introduction of “light” beer, “light” wines, and coolers (both wine and spirits) may have slightly lowered the average ethanol content in some alcoholic beverages. Kling (1991, 1989) suggests that there were decreases in the ethanol content of spirits during the 1980s. However, such decreases may be offset by the increase in sales of drinks with higher ethanol content, such as premium brand liquors, fortified wines, malt liquors, and locally produced beers and ales (microbrews). “Ice” beers and “dry” beers, for example, both have higher ethanol content than either premium or light beers (M. Shanken Communications, Inc. 1994). Therefore, changes in the average net ethanol content

across all beverages have probably been minimal and not large enough to alter the trends in overall per capita consumption.

Studies by Kerr and colleagues (2006a, b) estimated national average and State-specific ECCs for beer, wine, and spirits in each year. Their method derived ECCs for each beverage type based on three components of data: (1) market shares for subcategories within the beverage type (e.g., table wine, wine coolers, etc., within wine); (2) market shares for leading brands in each subcategory; and (3) ethanol contents of these leading brands. Their findings suggest that in 2002, the national average ethanol content was 0.0467 for beer, 0.1145 for wine, and 0.3690 for spirits. Their State-specific estimates indicate that ECCs for all beverage types varied by State and over time. AEDS compared per capita consumption estimates derived by Kerr and colleagues with data presented in this surveillance report. Results revealed that cross-State correlations between the two data sets are higher than 0.99 for all three beverage types. Similar patterns also were observed in national trends between the two sets of estimates, although some differences in absolute values existed and fluctuated over time. Given the fact that Kerr and colleagues applied their ECCs to the same AEDS beverage volume data to derive their per capita consumption estimates, it was concluded that consumption trends are mainly driven by beverage volumes rather than changes in the ECC estimates.

Because most of the analyses provided in this surveillance report are focused on consumption trends over time, and because of the time- and labor-intensive nature of estimating the ECC every year for each State, AEDS will continue to use the current fixed set of ECCs. However, we will monitor the market changes by conducting periodic analysis of the ECCs.

Population Denominator

AEDS uses the population of persons ages 14 and older to calculate per capita consumption rates. Although age 14 is below the minimum legal age for the purchase of alcoholic beverages throughout the United States, most self-report surveys indicate that many 14-year-olds drink alcoholic beverages. For example, data from the NIAAA 2001–2002 National Epidemiologic Survey on Alcohol and Related Conditions indicate that 12.2 percent of current drinkers ages 18 and older in the United States began drinking at age 15 or younger (AEDS 2004). Results from the Monitoring the Future survey in 2009 (Johnston et al. 2010) indicate that 30.3 percent of eighth graders (13- to 14-year-olds) reported past-year use of alcohol (i.e., beyond a few sips). Also, using data from the National Survey on Drug Use and Health in 2009, Chen and colleagues (2011) found the median age of initiation of alcohol use among 12- to 20-year-olds to be 14.

Limitations

Individuals familiar with survey reports and other scientific literature often are accustomed to the presentation of significance tests, or confidence intervals, on any data comparisons or trends. However, because data presented in this report are based on total actual sales and/or shipments, no measures of statistical significance are provided. Nonetheless, it is important to note that these data are still only estimates and may be subject to reporting error and random fluctuation over time.

In addition to ECCs, many factors may result in inaccuracies in estimates of per capita alcohol consumption. For instance, these estimates in some States may be inflated by such factors as cross-border sales to buyers from neighboring States (e.g., in New Hampshire) or tourists' consumption of alcohol (e.g., in Washington D.C.). Other factors include: variation in State reporting practices for sales of alcoholic beverages; time delay between State taxation records and actual consumption; exclusion of

alcohol contained in medications and foods; unrecorded legal home production; and illicit production, importation, and sales. These factors are discussed in detail in the latest AEDS data reference manual (DRM) on per capita alcohol consumption (Nephew et al. 2004). The DRM can be ordered on NIAAA's Web site <http://www.niaaa.nih.gov>.

REFERENCES

- Alcohol Epidemiologic Data System (AEDS). Unpublished data from the 2001–2002 National Epidemiologic Survey on Alcohol and Related Conditions, National Institute on Alcohol Abuse and Alcoholism, 2004.
- Beverage Information Group. *Beer Handbook, 2010*. Norwalk, CT: Beverage Information Group, 2010a.
- Beverage Information Group. *Liquor Handbook, 2010*. Norwalk, CT: Beverage Information Group, 2010b.
- Beverage Information Group. *Wine Handbook, 2010*. Norwalk, CT: Beverage Information Group, 2010c.
- Campbell, K.E.; Clem, D.; and Williams, G.D. Technical report: 1986–91 per capita ethanol consumption trends using beverage industry shipments data compared to combined sales/tax receipt and shipments data. Working paper prepared by the Alcohol Epidemiologic Data System, NIAAA, Washington, DC, August 1994.
- Chen, C.M.; Yi, H.; and Faden, V.B. *Surveillance Report #91: Trends in Underage Drinking in the United States, 1991–2009*. Rockville, MD: NIAAA, Division of Epidemiology and Prevention Research, Alcohol Epidemiologic Data System, March 2011.
- Hyman, M.; Zimmerman, M.; Gurioli, C.; and Helrich, A. *Drinkers, Drinking and Alcohol-Related Mortality and Hospitalizations: A Statistical Compendium, 1980 Edition*. New Brunswick, NJ: Rutgers University, 1980.
- Johnston, L.D.; O'Malley, P.M.; Bachman, J.G.; and Schulenberg, J.E. *Monitoring the Future, National Results on Adolescent Drug Use: Overview of Key Findings, 2009*. (NIH Publication No. 10-7583). Bethesda, MD: National Institute on Drug Abuse, 2010.
- Kerr, W.C.; Greenfield, T.K.; Tujague, J.; and Brown, S.E. The alcohol content of wine consumed in the US and per capita consumption: New estimates reveal different trends. *Alcoholism: Clinical and Experimental Research* 30(3):516–522, 2006a.
- Kerr, W.C.; Greenfield, T.K.; and Tujague, J. Estimates of the mean alcohol concentration of the spirits, wine, and beer sold in the United States and per capita consumption: 1950 to 2002. *Alcoholism: Clinical and Experimental Research* 30(9): 1583–1591, 2006b.
- Kling, W. Errata: Measurement of ethanol consumed in distilled spirits. *Journal of Studies on Alcohol* 52:503–504, 1991.
- Kling, W. Measurement of ethanol consumed in distilled spirits. *Journal of Studies on Alcohol* 50:456–460, 1989.
- LaVallee, R.A. and Yi, H. *Surveillance Report #90: Apparent Per Capita Alcohol Consumption: National, State, and Regional Trends, 1977–2008*. Rockville, MD: NIAAA, Division of Epidemiology and Prevention Research, Alcohol Epidemiologic Data System, August 2010.
- M. Shanken Communications, Inc. *The U.S. Beer Market: Impact Databank Review and Forecast, 1994 Edition*. New York: Shanken, 1994.
- National Center for Health Statistics. (2008). *Data2010: The Healthy People 2010 Database* (May, 2008 Edition) [Interactive database]. Available from National Center for Health Statistics website, <http://www.cdc.gov/nchs>.
- Nephew, T.M.; Williams, G.D.; Yi, H.; Hoy, A.K.; Stinson, F.S.; and Dufour, M. *Surveillance Report #59: Apparent Per Capita Alcohol Consumption: National, State, and Regional Trends, 1977–2000*. Rockville, MD: NIAAA, Division of Biometry and Epidemiology, Alcohol Epidemiologic Data System, September 2003.
- Nephew, T.M.; Yi, H.; Williams, G.D.; Stinson, F.S.; and Dufour, M.C. *Alcohol Epidemiologic Data Reference Manual, Vol. 1, 4th Edition, U.S. Apparent Consumption of Alcoholic Beverages Based on State Sales, Taxation, or Receipt Data*. NIH Publication No. 04-5563. Bethesda, MD: National Institutes of Health, National Institute on Alcohol Abuse and Alcoholism, Alcohol Epidemiologic Data System, June 2004.
- U.S. Census Bureau, Population Division. *Estimates and Projections Area Documentation: State and County Total Population Estimates*, Washington, D.C.: U.S. Census Bureau, Internet release, December 2002.
- U.S. Census Bureau, Population Division. *Estimates of the Resident Population by Single-Year of Age and Sex for the United States and States: July 1, 2009* (SC-EST2009-AGESEX_RES). Washington, D.C.: U.S. Census Bureau, Internet release, July 2010.
- U.S. Department of Health and Human Services. *Healthy People 2010. 2nd Ed. With Understanding and Improving Health and Objectives for Improving Health*. 2 vols. Washington, DC: U.S. Government Printing Office, November 2000.

List of Figures

	Page
Figure 1 Total per capita ethanol consumption, United States, 1935–2009	6
Figure 2 Per capita ethanol consumption by beverage type, United States, 1977–2009	6
Figure 3 Percent change in per capita ethanol consumption, United States, 1977–2009	7
Figure 4 Total per capita consumption of gallons of ethanol by State, United States, 2009	8
Figure 5 Percentage change in total per capita ethanol consumption by State, United States, 2008–2009	8
Figure 6 Total per capita ethanol consumption by region, United States, 1977–2009	9
Figure 7 Per capita ethanol consumption from beer by region, United States, 1977–2009	9
Figure 8 Per capita ethanol consumption from wine by region, United States, 1977–2009	10
Figure 9 Per capita ethanol consumption from spirits by region, United States, 1977–2009	10

List of Tables

	Page
Table 1 Apparent per capita ethanol consumption, United States, 1850–2009	11
Table 2 Apparent alcohol consumption for States, census regions, and the United States, 2009	13
Table 3 Per capita ethanol consumption for States, census regions, and the United States, 1977–2009	15

Figure 1. Total per capita ethanol consumption, United States, 1935–2009

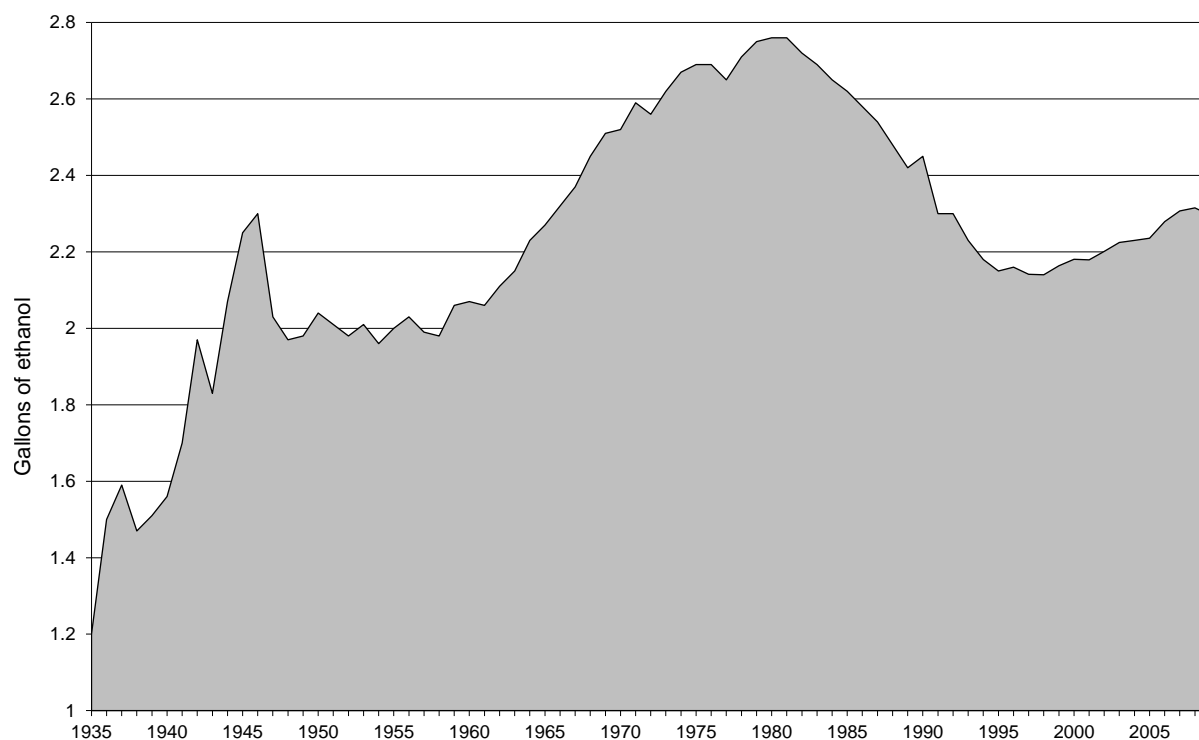


Figure 2. Per capita ethanol consumption by beverage type, United States, 1977–2009

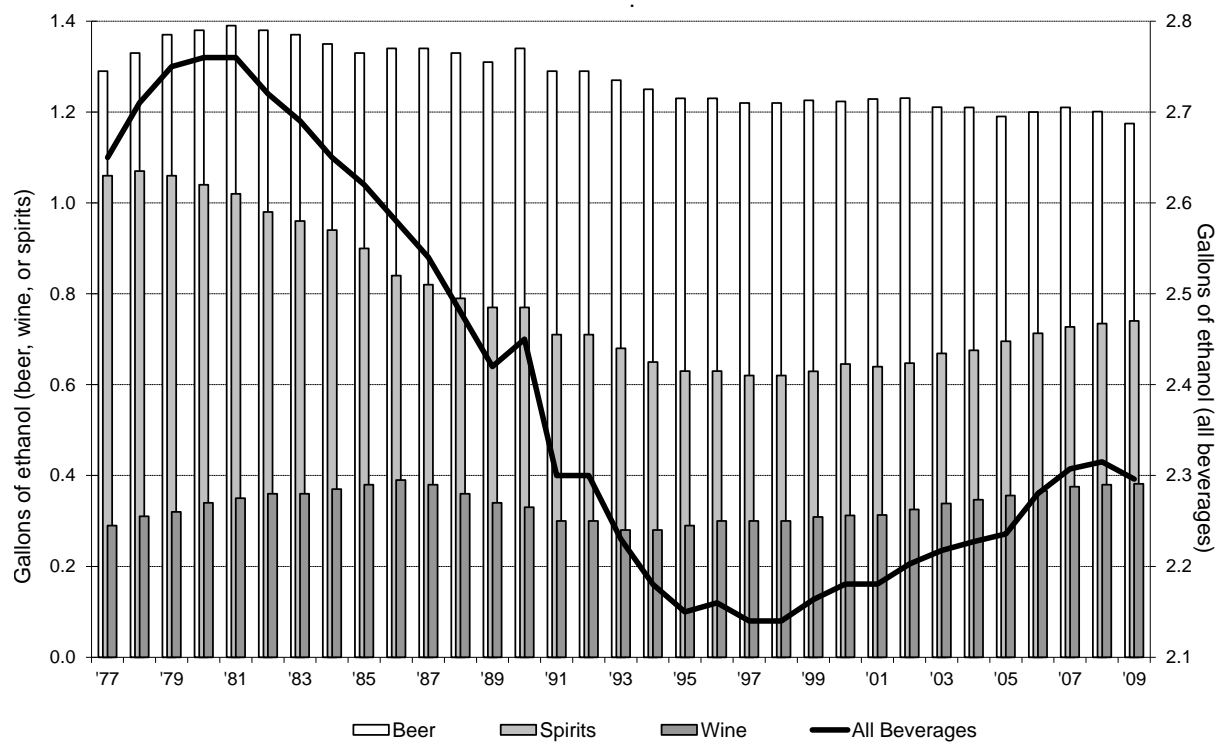


Figure 3. Percent change in per capita ethanol consumption, United States, 1977–2009

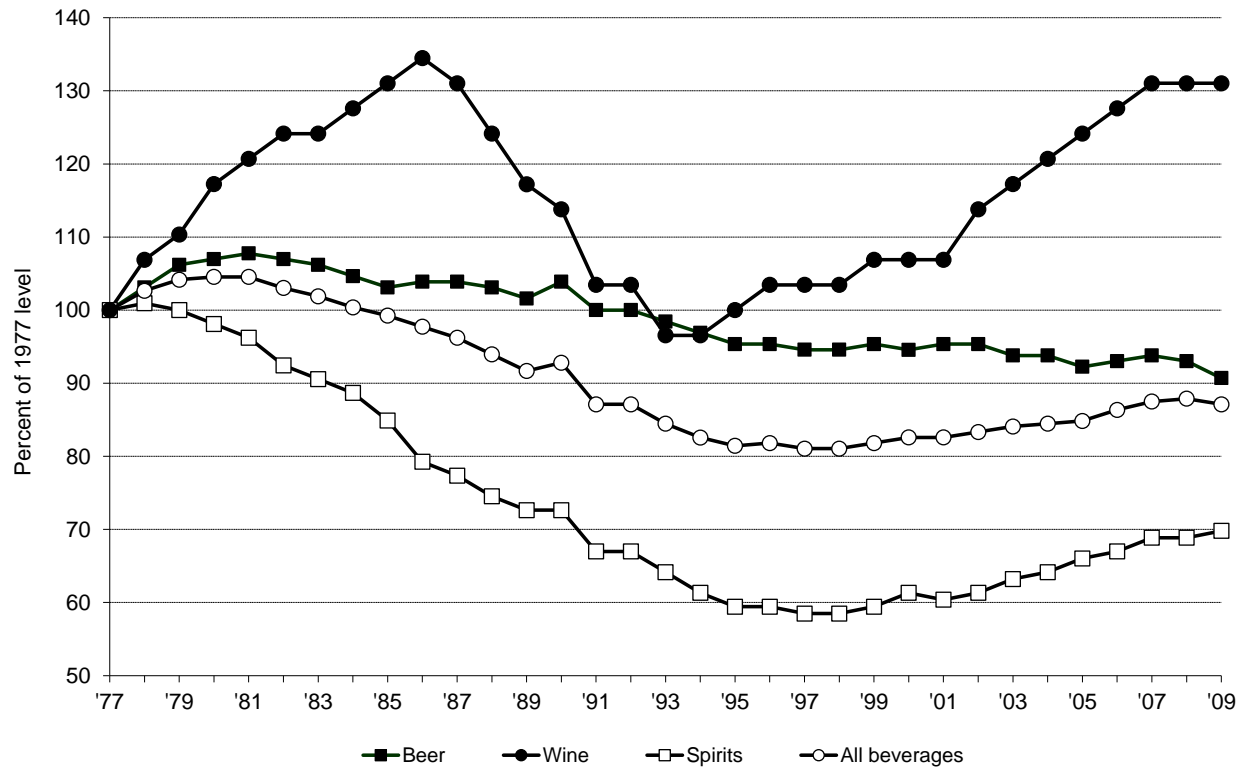


Figure 4. Total per capita consumption of gallons of ethanol by State, United States, 2009.

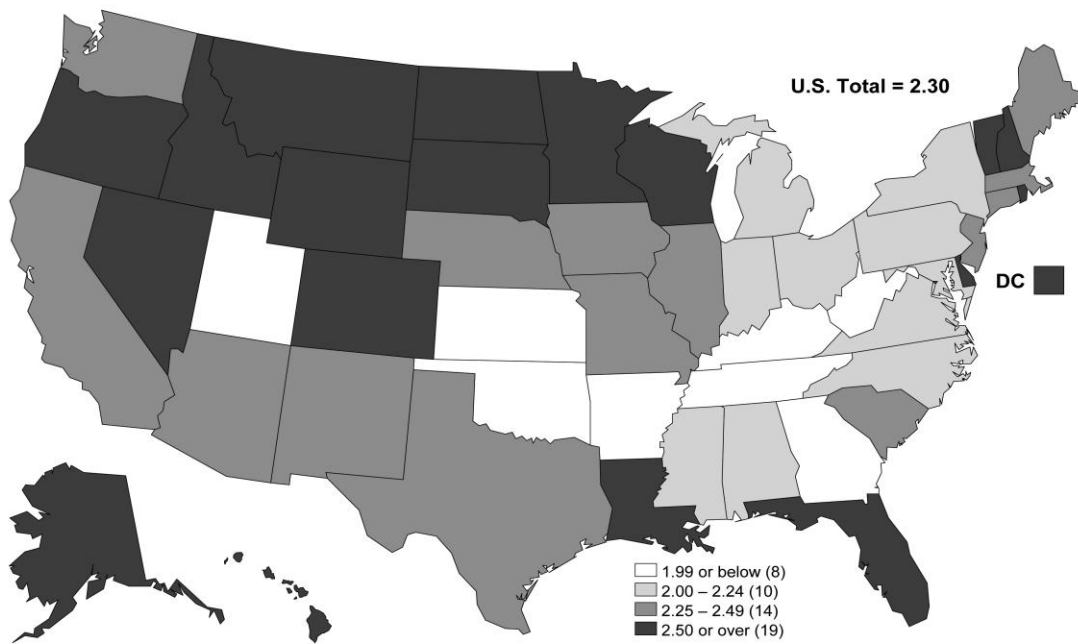


Figure 5. Percentage change in total per capita ethanol consumption by State, United States, 2008–2009.

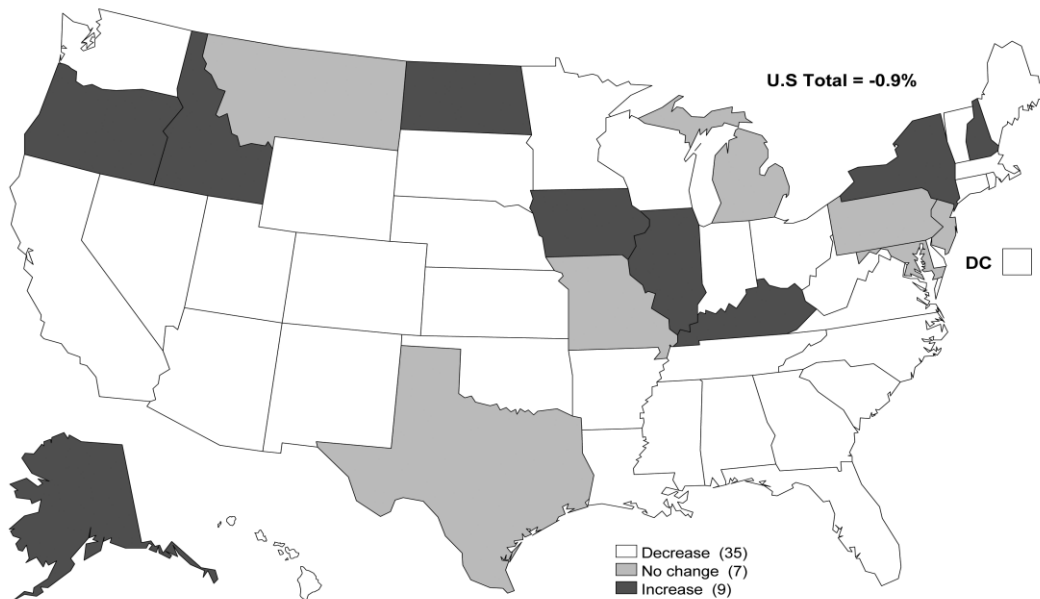


Figure 6. Total per capita ethanol consumption by region, United States, 1977–2009

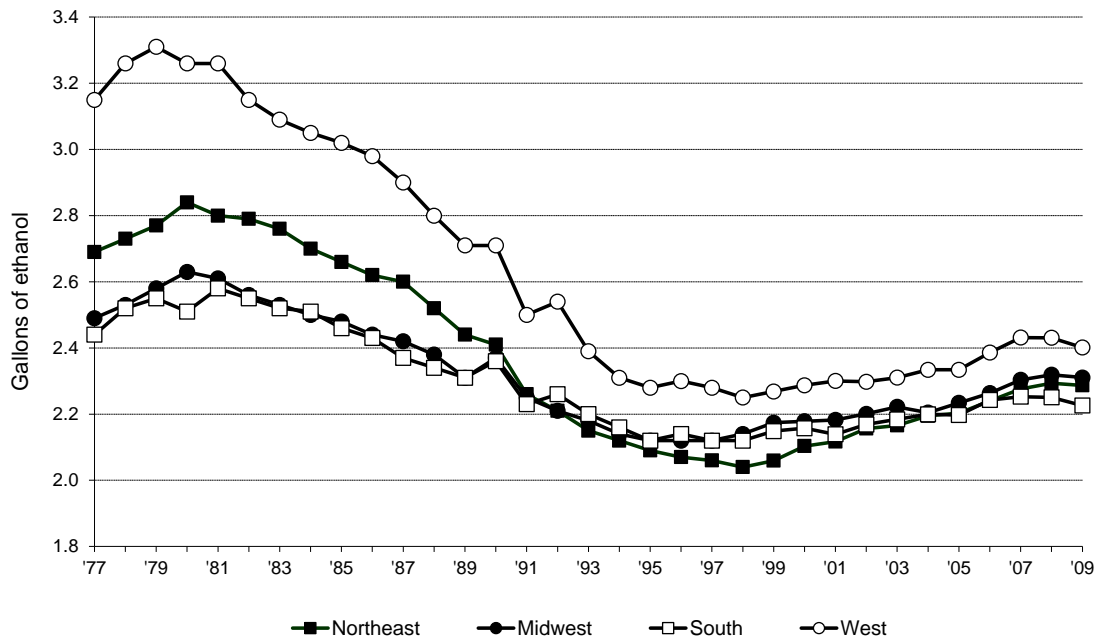


Figure 7. Per capita ethanol consumption from beer by region, United States, 1977–2009

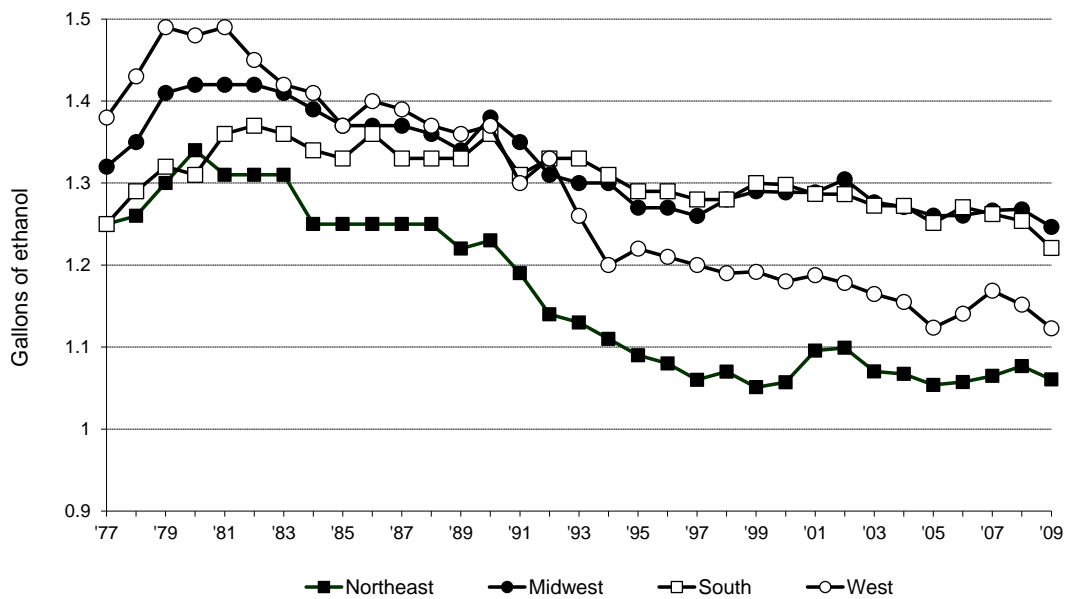


Figure 8. Per capita ethanol consumption from wine by region, United States, 1977–2009

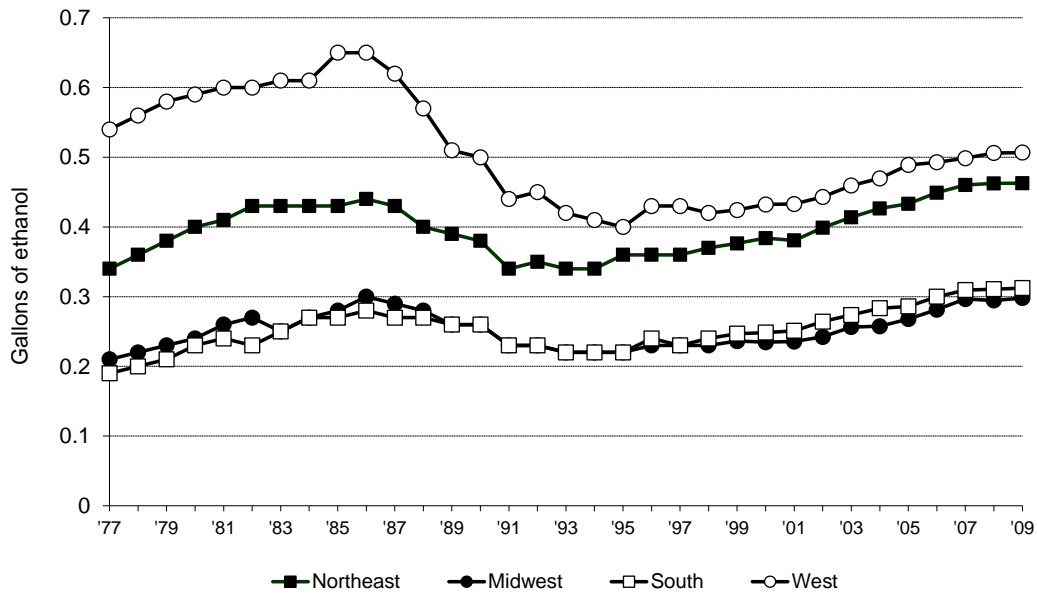


Figure 9. Per capita ethanol consumption from spirits by region, United States, 1977–2009

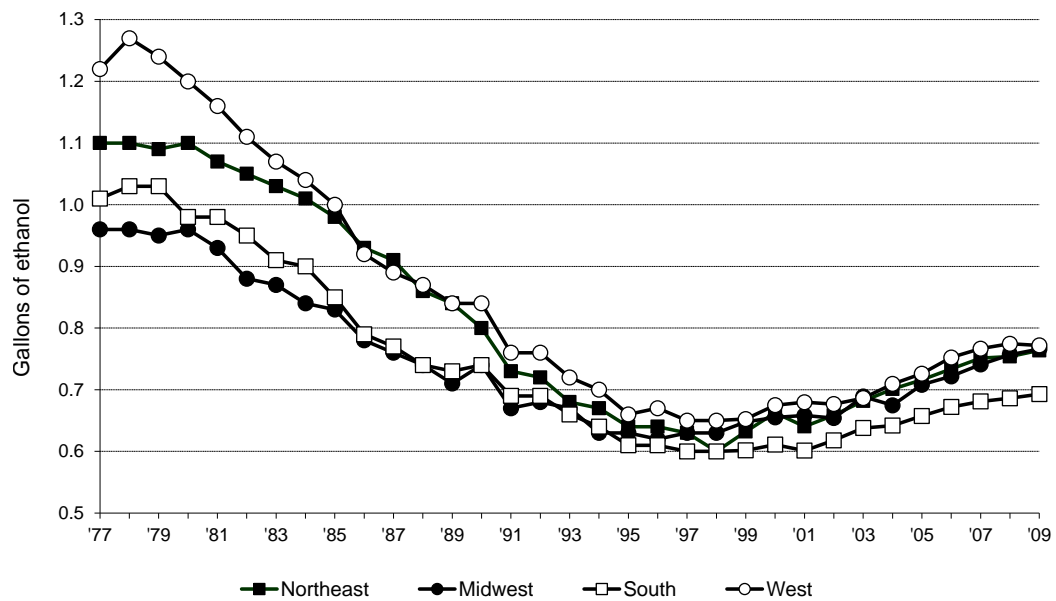


Table 1. Apparent per capita ethanol consumption, United States, 1850–2009. [Gallons of ethanol, based on population age 15 and older prior to 1970 and on population age 14 and older thereafter]

Year	Beer	Wine	Spirits	All beverages
2009	1.17	0.38	0.74	2.30
2008	1.20	0.38	0.73	2.32
2007	1.20	0.38	0.73	2.31
2006	1.20	0.37	0.71	2.28
2005	1.19	0.36	0.70	2.24
2004	1.21	0.35	0.68	2.23
2003	1.21	0.34	0.67	2.22
2002	1.23	0.33	0.65	2.20
2001	1.23	0.31	0.64	2.18
2000	1.22	0.31	0.65	2.18
1999	1.23	0.31	0.63	2.16
1998	1.22	0.30	0.62	2.14
1997	1.22	0.30	0.62	2.14
1996	1.23	0.30	0.63	2.16
1995	1.23	0.29	0.63	2.15
1994	1.25	0.28	0.65	2.18
1993	1.26	0.28	0.68	2.23
1992	1.29	0.30	0.71	2.30
1991	1.29	0.30	0.71	2.30
1990	1.34	0.33	0.77	2.45
1989	1.31	0.34	0.77	2.42
1988	1.33	0.36	0.79	2.48
1987	1.34	0.38	0.82	2.54
1986	1.34	0.39	0.84	2.58
1985	1.33	0.38	0.90	2.62
1984	1.35	0.37	0.94	2.65
1983	1.37	0.36	0.96	2.69
1982	1.38	0.36	0.98	2.72
1981	1.39	0.35	1.02	2.76
1980	1.38	0.34	1.04	2.76
1979	1.37	0.32	1.06	2.75
1978	1.33	0.31	1.07	2.71
1977	1.29	0.29	1.06	2.64
1976	1.27	0.32	1.10	2.69
1975	1.26	0.32	1.11	2.69
1974	1.25	0.31	1.11	2.67
1973	1.20	0.31	1.10	2.62
1972	1.17	0.30	1.09	2.56
1971	1.15	0.31	1.12	2.59
1970	1.14	0.27	1.11	2.52
1969	1.12	0.26	1.13	2.51
1968	1.09	0.26	1.10	2.45
1967	1.07	0.25	1.05	2.37
1966	1.06	0.24	1.02	2.32
1965	1.04	0.24	0.99	2.27
1964	1.04	0.24	0.95	2.23
1963	1.01	0.23	0.91	2.15
1962	0.99	0.22	0.90	2.11
1961	0.97	0.23	0.86	2.06
1960	0.99	0.22	0.86	2.07
1959	1.00	0.22	0.84	2.06
1958	0.96	0.22	0.80	1.98
1957	0.97	0.22	0.80	1.99

Numbers may not sum because of rounding.

Table 1. Apparent per capita ethanol consumption, United States, 1850–2009. [Gallons of ethanol, based on population age 15 and older prior to 1970 and on population age 14 and older thereafter] (Continued)

Year	Beer	Wine	Spirits	All beverages
1956	1.00	0.22	0.81	2.03
1955	1.01	0.22	0.77	2.00
1954	1.01	0.21	0.74	1.96
1953	1.04	0.20	0.77	2.01
1952	1.04	0.21	0.73	1.98
1951	1.03	0.20	0.78	2.01
1950	1.04	0.23	0.77	2.04
1949	1.06	0.22	0.70	1.98
1948	1.07	0.20	0.70	1.97
1947	1.11	0.16	0.76	2.03
1946	1.07	0.24	0.99	2.30
1945	1.17	0.20	0.88	2.25
1944	1.13	0.18	0.76	2.07
1943	1.00	0.17	0.66	1.83
1942	0.90	0.22	0.85	1.97
1941	0.81	0.18	0.71	1.70
1940	0.73	0.16	0.67	1.56
1939	0.75	0.14	0.62	1.51
1938	0.75	0.13	0.59	1.47
1937	0.82	0.13	0.64	1.59
1936	0.79	0.12	0.59	1.50
1935	0.68	0.09	0.43	1.20
1934	0.61	0.07	0.29	0.97
(Prohibition)				
1916–1919.....	1.08	0.12	0.76	1.96
1911–1915.....	1.48	0.14	0.94	2.56
1906–1910.....	1.47	0.17	0.96	2.60
1901–1905.....	1.31	0.13	0.95	2.39
1896–1900.....	1.19	0.10	0.77	2.06
1891–1895.....	1.17	0.11	0.95	2.23
1881–1890.....	0.90	0.14	0.95	1.99
1871–1880.....	0.56	0.14	1.02	1.72
1870	0.44	0.10	1.53	2.07
1860	0.27	0.10	2.16	2.53
1850	0.14	0.08	1.88	2.10

Numbers may not sum because of rounding.

Note: Data prior to 1977 are from: Hyman, M.; Zimmerman, M.; Gurioli, C.; and Helrich, A. *Drinkers, Drinking and Alcohol-Related Mortality and Hospitalizations: A Statistical Compendium, 1980 edition*. New Brunswick, NJ: Rutgers University, 1980.

Table 2. Apparent alcohol consumption for States, census regions, and the United States, 2009. [Volume and ethanol in thousands of gallons, per capita ethanol consumption in gallons, based on population age 14 and older]

State or other geographic area	Beer			Wine			Spirits			All beverages		
	Volume	Ethanol	Per capita	Volume	Ethanol	Per capita	Volume	Ethanol	Per capita	Ethanol	Per capita	U.S. decile
Alabama	102,308	4,604	1.20	6,684	862	0.22	5,430	2,232	0.58	7,698	2.01	9
Alaska	16,236	731	1.31	2,326	300	0.54	1,572	646	1.16	1,677	3.02	2
Arizona	137,838	6,203	1.19	15,465	1,995	0.38	9,449	3,883	0.74	12,081	2.31	7
Arkansas	55,463	2,496	1.07	3,043	393	0.17	3,395	1,395	0.60	4,284	1.83	10
California	688,928	31,002	1.05	127,316	16,424	0.55	52,840	21,717	0.73	69,143	2.33	6
Colorado	110,123	4,956	1.22	14,425	1,861	0.46	9,850	4,048	1.00	10,865	2.68	3
Connecticut	57,498	2,587	0.89	13,374	1,725	0.59	6,080	2,499	0.86	6,811	2.34	6
Delaware	21,173	953	1.31	3,210	414	0.57	2,199	904	1.25	2,271	3.13	1
Dist. of Columb.	14,310	644	1.26	3,965	511	1.00	2,031	835	1.64	1,990	3.90	1
Florida	412,794	18,576	1.21	57,842	7,462	0.48	34,522	14,188	0.92	40,226	2.61	3
Georgia	186,908	8,411	1.08	14,833	1,913	0.25	12,233	5,028	0.64	15,352	1.97	9
Hawaii	30,893	1,390	1.30	4,400	568	0.53	1,944	799	0.75	2,757	2.58	4
Idaho	28,456	1,281	1.05	8,653	1,116	0.92	2,084	857	0.70	3,253	2.68	3
Illinois	282,623	12,718	1.22	31,303	4,038	0.39	18,598	7,644	0.73	24,400	2.33	6
Indiana	125,275	5,637	1.09	10,096	1,302	0.25	9,159	3,764	0.73	10,704	2.06	8
Iowa	77,288	3,478	1.42	3,378	436	0.18	4,308	1,771	0.72	5,684	2.31	6
Kansas	59,693	2,686	1.18	2,452	316	0.14	3,688	1,516	0.67	4,518	1.99	9
Kentucky	87,058	3,918	1.11	4,849	626	0.18	5,583	2,295	0.65	6,838	1.94	10
Louisiana	120,870	5,439	1.50	7,868	1,015	0.28	7,510	3,087	0.85	9,541	2.63	3
Maine	30,668	1,380	1.24	3,603	465	0.42	2,248	924	0.83	2,769	2.48	4
Maryland	100,269	4,512	0.97	13,292	1,715	0.37	9,863	4,054	0.87	10,280	2.21	7
Massachusetts	124,940	5,622	1.02	25,944	3,347	0.61	11,189	4,599	0.84	13,568	2.47	5
Michigan	199,875	8,994	1.10	19,957	2,574	0.31	16,034	6,590	0.80	18,159	2.22	7
Minnesota	113,029	5,086	1.19	12,360	1,594	0.37	10,820	4,447	1.04	11,128	2.59	4
Mississippi	74,048	3,332	1.41	2,100	271	0.11	4,064	1,670	0.71	5,273	2.24	7
Missouri	140,714	6,332	1.30	11,315	1,460	0.30	9,817	4,035	0.83	11,827	2.42	5
Montana	29,711	1,337	1.66	2,818	364	0.45	1,728	710	0.88	2,411	2.99	2
Nebraska	46,710	2,102	1.46	2,294	296	0.20	2,403	988	0.68	3,386	2.35	6
Nevada	73,704	3,317	1.57	9,410	1,214	0.58	5,875	2,415	1.15	6,945	3.30	1
New Hampshire	42,413	1,909	1.72	7,172	925	0.84	4,909	2,018	1.82	4,851	4.38	1

Decile values (1 = highest) apply only to State-level data. Numbers may not sum because of rounding.

Table 2. Apparent alcohol consumption for States, census regions, and the United States, 2009. [Volume and ethanol in thousands of gallons, per capita ethanol consumption in gallons, based on population age 14 and older] (Continued)

State or other geographic area	Beer			Wine			Spirits			All beverages		
	Volume	Ethanol	Per capita	Volume	Ethanol	Per capita	Volume	Ethanol	Per capita	Ethanol	Per capita	U.S. decile
New Jersey	145,639	6,554	0.92	31,523	4,067	0.57	15,036	6,180	0.87	16,800	2.35	5
New Mexico.....	48,855	2,198	1.37	4,001	516	0.32	2,885	1,186	0.74	3,900	2.42	5
New York.....	325,899	14,665	0.91	58,245	7,514	0.46	27,166	11,165	0.69	33,344	2.06	8
North Carolina ..	186,194	8,379	1.10	19,771	2,551	0.34	10,654	4,379	0.58	15,308	2.02	8
North Dakota ...	19,399	873	1.63	1,023	132	0.25	1,512	622	1.16	1,626	3.03	1
Ohio.....	268,380	12,077	1.28	19,359	2,497	0.26	10,711	4,402	0.47	18,977	2.01	9
Oklahoma.....	78,120	3,515	1.18	4,131	533	0.18	4,221	1,735	0.58	5,783	1.95	9
Oregon	89,702	4,037	1.28	11,842	1,528	0.49	6,285	2,583	0.82	8,147	2.59	4
Pennsylvania...	315,563	14,200	1.35	18,386	2,372	0.23	15,674	6,442	0.61	23,014	2.19	8
Rhode Island ...	21,555	970	1.10	3,623	467	0.53	1,967	808	0.92	2,246	2.55	4
South Carolina	112,230	5,050	1.36	6,966	899	0.24	6,980	2,869	0.77	8,818	2.37	5
South Dakota ..	22,298	1,003	1.53	1,105	142	0.22	1,407	578	0.88	1,724	2.62	3
Tennessee	119,745	5,389	1.05	8,220	1,060	0.21	7,143	2,936	0.57	9,385	1.83	10
Texas	609,536	27,429	1.42	42,189	5,442	0.28	27,439	11,278	0.58	44,149	2.29	7
Utah.....	32,445	1,460	0.70	2,718	351	0.17	2,330	958	0.46	2,768	1.33	10
Vermont.....	15,908	716	1.36	2,578	333	0.63	905	372	0.70	1,420	2.69	2
Virginia	158,962	7,153	1.11	21,334	2,752	0.43	9,247	3,801	0.59	13,706	2.13	8
Washington	131,963	5,938	1.09	21,427	2,764	0.51	9,817	4,035	0.74	12,737	2.34	6
West Virginia ...	41,873	1,884	1.24	1,173	151	0.10	1,677	689	0.45	2,725	1.79	10
Wisconsin	153,888	6,925	1.49	11,267	1,453	0.31	13,108	5,387	1.16	13,766	2.96	2
Wyoming	14,183	638	1.45	766	99	0.22	1,178	484	1.10	1,221	2.77	2
<i>Regions</i>												
Northeast.....	1,080,084	48,604	1.06	164,448	21,214	0.46	85,174	35,007	0.76	104,824	2.29	
Midwest	1,509,171	67,913	1.25	125,909	16,242	0.30	101,566	41,743	0.77	125,898	2.31	
South.....	2,481,861	111,684	1.22	221,469	28,570	0.31	154,191	63,373	0.69	203,626	2.23	
West.....	1,433,036	64,487	1.12	225,568	29,098	0.51	107,837	44,321	0.77	137,906	2.40	
U.S. total	6,504,152	292,687	1.17	737,394	95,124	0.38	448,768	184,444	0.74	572,254	2.30	

Decile values (1 = highest) apply only to State-level data. Numbers may not sum because of rounding.

Table 3. Per capita ethanol consumption for States, census regions, and the United States, 1977–2009. [Gallons of ethanol, based on population age 14 and older] (Continued)

State or other geographic area	Per capita consumption				U.S. decile for all beverages
	Beer	Wine	Spirits	All beverages	
Alabama					
2009.....	1.20	0.22	0.58	2.01	9
2008.....	1.24	0.22	0.58	2.04	9
2007.....	1.24	0.22	0.56	2.02	9
2006.....	1.22	0.21	0.55	1.97	9
2005.....	1.18	0.20	0.53	1.91	9
2004.....	1.19	0.20	0.52	1.90	9
2003.....	1.18	0.19	0.52	1.89	9
2002.....	1.18	0.21	0.53	1.92	9
2001.....	1.16	0.17	0.53	1.86	9
2000.....	1.19	0.18	0.51	1.88	9
1999.....	1.18	0.17	0.51	1.87	9
1998.....	1.16	0.17	0.51	1.85	9
1997.....	1.14	0.15	0.52	1.81	9
1996.....	1.17	0.15	0.53	1.86	9
1995.....	1.14	0.15	0.53	1.81	9
1994.....	1.16	0.17	0.54	1.87	9
1993.....	1.14	0.17	0.56	1.86	9
1992.....	1.02	0.19	0.59	1.79	10
1991.....	1.00	0.17	0.59	1.76	10
1990.....	1.12	0.18	0.61	1.92	9
1989.....	1.10	0.17	0.60	1.87	9
1988.....	1.10	0.18	0.61	1.89	9
1987.....	1.10	0.18	0.61	1.89	9
1986.....	1.09	0.18	0.64	1.90	9
1985.....	1.06	0.17	0.67	1.90	9
1984.....	1.02	0.19	0.69	1.90	10
1983.....	1.01	0.17	0.71	1.89	10
1982.....	1.00	0.18	0.72	1.89	10
1981.....	1.00	0.19	0.73	1.92	10
1980.....	0.96	0.16	0.74	1.86	10
1979.....	0.98	0.12	0.84	1.94	10
1978.....	0.98	0.12	0.88	1.97	9
1977.....	0.99	0.13	0.84	1.96	9
Alaska					
2009.....	1.31	0.54	1.16	3.02	2
2008.....	1.20	0.49	1.09	2.77	2
2007.....	1.13	0.44	1.07	2.64	3
2006.....	1.24	0.46	1.02	2.73	2
2005.....	1.24	0.43	0.99	2.65	2
2004.....	1.32	0.45	0.96	2.73	2
2003.....	1.27	0.37	0.79	2.43	3
2002.....	1.36	0.43	1.08	2.87	1
2001.....	1.34	0.40	0.97	2.71	2
2000.....	1.35	0.37	0.92	2.63	2
1999.....	1.45	0.40	0.98	2.82	1
1998.....	1.37	0.39	0.98	2.74	1
1997.....	1.31	0.36	0.88	2.56	2
1996.....	1.31	0.38	0.94	2.63	2
1995.....	1.45	0.39	1.02	2.86	1
1994.....	1.53	0.40	1.10	3.03	1

Decile values (1 = highest) apply only to State-level data. Numbers may not sum because of rounding.

Table 3. Per capita ethanol consumption for States, census regions, and the United States, 1977–2009. [Gallons of ethanol, based on population age 14 and older] (Continued)

State or other geographic area	Per capita consumption				U.S. decile for all beverages
	Beer	Wine	Spirits	All beverages	
1993.....	1.31	0.32	0.92	2.55	2
1992.....	1.53	0.41	1.08	3.02	1
1991.....	1.54	0.43	1.14	3.11	1
1990.....	1.62	0.46	1.25	3.33	1
1989.....	1.57	0.46	1.24	3.27	1
1988.....	1.60	0.49	1.23	3.32	1
1987.....	1.64	0.54	1.29	3.46	1
1986.....	1.68	0.56	1.27	3.51	1
1985.....	1.68	0.58	1.53	3.78	1
1984.....	1.73	0.58	1.56	3.86	1
1983.....	1.76	0.61	1.70	4.06	1
1982.....	1.75	0.56	1.74	4.05	1
1981.....	1.71	0.57	1.82	4.10	1
1980.....	1.55	0.50	1.70	3.76	1
1979.....	1.50	0.47	1.65	3.62	1
1978.....	1.39	0.45	1.68	3.52	2
1977.....	1.19	0.42	1.70	3.31	2
Arizona					
2009.....	1.19	0.38	0.74	2.31	7
2008.....	1.27	0.40	0.75	2.41	5
2007.....	1.36	0.33	0.76	2.45	5
2006.....	1.31	0.37	0.78	2.47	5
2005.....	1.33	0.39	0.74	2.47	3
2004.....	1.39	0.33	0.70	2.43	4
2003.....	1.41	0.37	0.71	2.48	3
2002.....	1.46	0.33	0.69	2.49	3
2001.....	1.47	0.33	0.70	2.50	3
2000.....	1.48	0.31	0.71	2.50	3
1999.....	1.47	0.34	0.69	2.51	2
1998.....	1.44	0.32	0.68	2.44	2
1997.....	1.45	0.31	0.68	2.44	2
1996.....	1.52	0.33	0.73	2.58	2
1995.....	1.47	0.29	0.68	2.44	3
1994.....	1.52	0.29	0.70	2.50	2
1993.....	1.58	0.27	0.76	2.62	2
1992.....	1.58	0.31	0.80	2.69	2
1991.....	1.58	0.35	0.78	2.71	2
1990.....	1.59	0.37	0.80	2.77	3
1989.....	1.68	0.36	0.85	2.89	2
1988.....	1.64	0.42	0.88	2.94	2
1987.....	1.67	0.46	0.86	2.99	2
1986.....	1.77	0.46	0.91	3.14	2
1985.....	1.67	0.46	1.00	3.12	2
1984.....	1.57	0.45	1.06	3.08	3
1983.....	1.62	0.44	1.00	3.06	3
1982.....	1.74	0.40	0.99	3.13	3
1981.....	1.78	0.42	1.01	3.22	3
1980.....	1.69	0.36	0.98	3.03	4
1979.....	1.86	0.39	1.17	3.42	2
1978.....	1.77	0.37	1.10	3.25	2
1977.....	1.70	0.34	1.05	3.10	3

Decile values (1 = highest) apply only to State-level data. Numbers may not sum because of rounding.

Table 3. Per capita ethanol consumption for States, census regions, and the United States, 1977–2009. [Gallons of ethanol, based on population age 14 and older] (Continued)

State or other geographic area	Per capita consumption				U.S. decile for all beverages
	Beer	Wine	Spirits	All beverages	
Arkansas					
2009.....	1.07	0.17	0.60	1.83	10
2008.....	1.11	0.17	0.60	1.88	10
2007.....	1.07	0.17	0.60	1.84	10
2006.....	1.07	0.17	0.59	1.82	10
2005.....	1.05	0.16	0.58	1.79	10
2004.....	1.07	0.15	0.58	1.80	10
2003.....	1.06	0.14	0.56	1.76	10
2002.....	1.07	0.14	0.53	1.73	10
2001.....	1.06	0.13	0.53	1.72	10
2000.....	1.09	0.12	0.53	1.74	10
1999.....	1.09	0.12	0.54	1.75	10
1998.....	1.10	0.11	0.51	1.73	10
1997.....	1.08	0.12	0.52	1.71	10
1996.....	1.10	0.12	0.53	1.75	9
1995.....	1.08	0.12	0.51	1.70	10
1994.....	1.06	0.13	0.46	1.65	10
1993.....	1.10	0.11	0.58	1.79	9
1992.....	1.13	0.12	0.65	1.90	9
1991.....	1.12	0.11	0.58	1.81	9
1990.....	1.12	0.13	0.61	1.86	9
1989.....	1.08	0.13	0.57	1.78	9
1988.....	1.07	0.14	0.53	1.74	10
1987.....	1.08	0.11	0.53	1.71	10
1986.....	1.06	0.09	0.48	1.63	10
1985.....	1.03	0.13	0.58	1.75	10
1984.....	1.02	0.12	0.64	1.78	10
1983.....	1.03	0.13	0.63	1.78	10
1982.....	1.03	0.12	0.63	1.78	10
1981.....	1.06	0.12	0.68	1.87	10
1980.....	1.00	0.12	0.69	1.81	10
1979.....	0.93	0.10	0.57	1.60	10
1978.....	0.97	0.11	0.73	1.82	10
1977.....	0.92	0.10	0.63	1.65	10
California					
2009.....	1.05	0.55	0.73	2.33	6
2008.....	1.07	0.55	0.72	2.34	6
2007.....	1.07	0.55	0.72	2.34	6
2006.....	1.05	0.54	0.70	2.29	6
2005.....	1.02	0.53	0.68	2.23	6
2004.....	1.06	0.51	0.67	2.24	6
2003.....	1.06	0.50	0.65	2.22	6
2002.....	1.07	0.49	0.63	2.20	6
2001.....	1.08	0.48	0.64	2.20	6
2000.....	1.07	0.48	0.64	2.19	6
1999.....	1.10	0.46	0.62	2.18	6
1998.....	1.10	0.45	0.61	2.17	6
1997.....	1.12	0.50	0.62	2.24	5
1996.....	1.11	0.49	0.64	2.24	5
1995.....	1.14	0.45	0.64	2.23	4
1994.....	1.09	0.47	0.68	2.24	5

Decile values (1 = highest) apply only to State-level data. Numbers may not sum because of rounding.

Table 3. Per capita ethanol consumption for States, census regions, and the United States, 1977–2009. [Gallons of ethanol, based on population age 14 and older] (Continued)

State or other geographic area	Per capita consumption				U.S. decile for all beverages
	Beer	Wine	Spirits	All beverages	
1993.....	1.17	0.48	0.69	2.35	4
1992.....	1.28	0.51	0.75	2.54	3
1991.....	1.22	0.49	0.75	2.46	4
1990.....	1.32	0.59	0.87	2.78	2
1989.....	1.31	0.61	0.87	2.79	2
1988.....	1.34	0.68	0.89	2.90	2
1987.....	1.36	0.74	0.93	3.03	2
1986.....	1.36	0.79	0.96	3.11	2
1985.....	1.32	0.78	1.02	3.12	2
1984.....	1.38	0.74	1.07	3.19	2
1983.....	1.37	0.75	1.11	3.23	2
1982.....	1.37	0.72	1.14	3.23	3
1981.....	1.43	0.72	1.21	3.36	2
1980.....	1.42	0.71	1.25	3.38	2
1979.....	1.42	0.70	1.28	3.40	2
1978.....	1.36	0.68	1.32	3.36	2
1977.....	1.31	0.67	1.28	3.25	2
Colorado					
2009.....	1.22	0.46	1.00	2.68	3
2008.....	1.27	0.46	1.01	2.75	2
2007.....	1.29	0.47	1.00	2.75	2
2006.....	1.27	0.45	0.97	2.69	3
2005.....	1.30	0.41	0.99	2.70	2
2004.....	1.30	0.43	0.95	2.68	2
2003.....	1.34	0.40	0.87	2.60	2
2002.....	1.35	0.39	0.90	2.64	2
2001.....	1.42	0.41	0.96	2.79	1
2000.....	1.35	0.37	0.89	2.60	2
1999.....	1.33	0.37	0.75	2.45	3
1998.....	1.33	0.37	0.83	2.53	2
1997.....	1.30	0.37	0.81	2.48	2
1996.....	1.36	0.37	0.84	2.57	2
1995.....	1.34	0.35	0.78	2.47	2
1994.....	1.36	0.35	0.84	2.55	2
1993.....	1.40	0.36	0.86	2.63	2
1992.....	1.34	0.36	0.81	2.52	3
1991.....	1.39	0.35	0.87	2.61	3
1990.....	1.35	0.29	0.75	2.39	6
1989.....	1.40	0.37	0.84	2.60	3
1988.....	1.42	0.39	0.91	2.72	3
1987.....	1.43	0.44	0.93	2.80	3
1986.....	1.47	0.46	0.94	2.87	3
1985.....	1.47	0.50	1.18	3.15	2
1984.....	1.51	0.46	1.12	3.09	2
1983.....	1.57	0.46	1.12	3.15	3
1982.....	1.64	0.46	1.18	3.28	2
1981.....	1.63	0.44	1.26	3.33	2
1980.....	1.57	0.47	1.31	3.35	2
1979.....	1.68	0.47	1.37	3.52	2
1978.....	1.64	0.47	1.43	3.54	1
1977.....	1.43	0.36	1.22	3.01	3

Decile values (1 = highest) apply only to State-level data. Numbers may not sum because of rounding.

Table 3. Per capita ethanol consumption for States, census regions, and the United States, 1977–2009. [Gallons of ethanol, based on population age 14 and older] (Continued)

State or other geographic area	Per capita consumption				U.S. decile for all beverages
	Beer	Wine	Spirits	All beverages	
Connecticut					
2009.....	0.89	0.59	0.86	2.34	6
2008.....	0.94	0.59	0.86	2.39	6
2007.....	0.93	0.58	0.85	2.35	6
2006.....	0.93	0.55	0.84	2.32	6
2005.....	0.90	0.54	0.79	2.23	6
2004.....	0.92	0.53	0.79	2.24	6
2003.....	0.93	0.52	0.77	2.22	6
2002.....	0.95	0.50	0.74	2.20	6
2001.....	0.95	0.50	0.74	2.19	6
2000.....	0.94	0.49	0.74	2.18	6
1999.....	0.94	0.49	0.75	2.18	6
1998.....	0.96	0.48	0.74	2.18	6
1997.....	0.95	0.48	0.74	2.17	6
1996.....	0.94	0.46	0.72	2.13	6
1995.....	0.97	0.49	0.77	2.22	5
1994.....	0.99	0.43	0.78	2.20	6
1993.....	0.96	0.44	0.80	2.20	6
1992.....	1.01	0.45	0.83	2.30	6
1991.....	1.03	0.43	0.84	2.29	6
1990.....	1.09	0.45	0.92	2.46	6
1989.....	1.09	0.47	0.98	2.54	4
1988.....	1.14	0.51	1.07	2.71	3
1987.....	1.15	0.52	1.12	2.79	3
1986.....	1.13	0.51	1.15	2.79	3
1985.....	1.14	0.50	1.20	2.84	3
1984.....	1.10	0.50	1.20	2.80	4
1983.....	1.10	0.49	1.23	2.82	4
1982.....	1.04	0.49	1.20	2.73	6
1981.....	1.05	0.44	1.18	2.67	6
1980.....	1.06	0.43	1.21	2.70	6
1979.....	1.13	0.40	1.20	2.72	5
1978.....	1.07	0.38	1.20	2.65	6
1977.....	1.05	0.35	1.21	2.61	6
Delaware					
2009.....	1.31	0.57	1.25	3.13	1
2008.....	1.36	0.58	1.25	3.20	1
2007.....	1.39	0.59	1.25	3.23	1
2006.....	1.43	0.60	1.28	3.30	1
2005.....	1.43	0.59	1.25	3.27	1
2004.....	1.41	0.57	1.28	3.26	1
2003.....	1.37	0.56	1.17	3.11	1
2002.....	1.39	0.52	1.10	3.01	1
2001.....	1.38	0.49	1.06	2.93	1
2000.....	1.36	0.48	1.05	2.89	1
1999.....	1.40	0.48	1.03	2.90	1
1998.....	1.36	0.47	0.98	2.82	1
1997.....	1.37	0.46	0.99	2.81	1
1996.....	1.39	0.45	0.94	2.78	1
1995.....	1.30	0.40	0.92	2.62	2
1994.....	1.43	0.38	0.95	2.76	1

Decile values (1 = highest) apply only to State-level data. Numbers may not sum because of rounding.

Table 3. Per capita ethanol consumption for States, census regions, and the United States, 1977–2009. [Gallons of ethanol, based on population age 14 and older] (Continued)

State or other geographic area	Per capita consumption				U.S. decile for all beverages
	Beer	Wine	Spirits	All beverages	
1993.....	1.46	0.35	0.95	2.76	1
1992.....	1.40	0.36	0.97	2.73	2
1991.....	1.40	0.35	0.95	2.70	2
1990.....	1.44	0.37	1.14	2.95	2
1989.....	1.40	0.38	1.13	2.91	2
1988.....	1.44	0.40	1.19	3.03	1
1987.....	1.44	0.42	1.22	3.08	2
1986.....	1.45	0.44	1.23	3.13	2
1985.....	1.46	0.41	1.30	3.16	2
1984.....	1.51	0.38	1.28	3.17	2
1983.....	1.53	0.35	1.34	3.22	2
1982.....	1.53	0.34	1.36	3.23	3
1981.....	1.51	0.32	1.39	3.23	3
1980.....	1.45	0.29	1.38	3.12	3
1979.....	1.38	0.27	1.34	2.99	4
1978.....	1.33	0.25	1.33	2.91	4
1977.....	1.32	0.24	1.35	2.91	4
District of Columbia					
2009.....	1.26	1.00	1.64	3.90	1
2008.....	1.34	1.00	1.63	3.97	1
2007.....	1.35	0.99	1.61	3.95	1
2006.....	1.36	0.95	1.58	3.89	1
2005.....	1.38	0.92	1.53	3.84	1
2004.....	1.41	0.94	1.57	3.93	1
2003.....	1.40	0.90	1.54	3.84	1
2002.....	1.36	0.84	1.47	3.67	1
2001.....	1.33	0.82	1.46	3.61	1
2000.....	1.35	0.70	1.48	3.53	1
1999.....	1.37	0.73	1.35	3.45	1
1998.....	1.37	0.73	1.44	3.55	1
1997.....	1.40	0.74	1.61	3.75	1
1996.....	1.42	0.74	1.47	3.63	1
1995.....	1.51	0.72	1.52	3.74	1
1994.....	1.50	0.74	1.52	3.76	1
1993.....	1.51	0.73	1.54	3.78	1
1992.....	1.61	0.70	1.74	4.05	1
1991.....	1.42	0.61	1.85	3.89	1
1990.....	1.42	0.76	1.96	4.14	1
1989.....	1.49	0.88	1.85	4.22	1
1988.....	1.47	0.99	2.02	4.48	1
1987.....	1.48	1.00	2.37	4.85	1
1986.....	1.52	1.04	2.19	4.75	1
1985.....	1.49	1.03	2.42	4.94	1
1984.....	1.56	1.11	2.68	5.34	1
1983.....	1.55	1.08	2.79	5.41	1
1982.....	1.48	1.00	2.91	5.39	1
1981.....	1.50	1.06	2.92	5.49	1
1980.....	1.49	0.99	2.94	5.42	1
1979.....	1.48	0.99	3.03	5.49	1
1978.....	1.43	0.94	3.14	5.51	1
1977.....	1.39	0.89	3.26	5.53	1

Decile values (1 = highest) apply only to State-level data. Numbers may not sum because of rounding.

Table 3. Per capita ethanol consumption for States, census regions, and the United States, 1977–2009. [Gallons of ethanol, based on population age 14 and older] (Continued)

State or other geographic area	Per capita consumption				U.S. decile for all beverages
	Beer	Wine	Spirits	All beverages	
Florida					
2009.....	1.21	0.48	0.92	2.61	3
2008.....	1.25	0.49	0.90	2.64	3
2007.....	1.30	0.49	0.93	2.72	2
2006.....	1.33	0.48	0.92	2.73	2
2005.....	1.34	0.47	0.91	2.71	2
2004.....	1.35	0.46	0.89	2.70	2
2003.....	1.32	0.44	0.86	2.63	2
2002.....	1.32	0.43	0.84	2.59	2
2001.....	1.33	0.40	0.82	2.56	2
2000.....	1.32	0.40	0.82	2.55	2
1999.....	1.33	0.40	0.80	2.53	2
1998.....	1.30	0.38	0.79	2.47	2
1997.....	1.34	0.37	0.80	2.51	2
1996.....	1.36	0.37	0.81	2.54	2
1995.....	1.34	0.35	0.82	2.50	2
1994.....	1.40	0.33	0.87	2.60	2
1993.....	1.44	0.33	0.92	2.68	2
1992.....	1.45	0.34	0.96	2.75	1
1991.....	1.43	0.34	0.92	2.69	2
1990.....	1.54	0.39	1.04	2.96	2
1989.....	1.51	0.39	1.00	2.90	2
1988.....	1.51	0.41	1.00	2.92	2
1987.....	1.51	0.42	1.03	2.95	2
1986.....	1.50	0.41	1.05	2.96	2
1985.....	1.47	0.41	1.16	3.04	3
1984.....	1.48	0.40	1.24	3.12	2
1983.....	1.56	0.40	1.23	3.19	2
1982.....	1.56	0.40	1.33	3.29	2
1981.....	1.55	0.39	1.38	3.31	3
1980.....	1.42	0.37	1.43	3.22	3
1979.....	1.47	0.37	1.51	3.34	2
1978.....	1.41	0.34	1.48	3.23	3
1977.....	1.33	0.33	1.47	3.13	2
Georgia					
2009.....	1.08	0.25	0.64	1.97	9
2008.....	1.13	0.25	0.64	2.02	9
2007.....	1.16	0.26	0.64	2.06	8
2006.....	1.17	0.26	0.64	2.06	8
2005.....	1.13	0.26	0.63	2.01	8
2004.....	1.17	0.26	0.63	2.06	8
2003.....	1.19	0.26	0.66	2.11	7
2002.....	1.20	0.26	0.65	2.12	7
2001.....	1.19	0.26	0.65	2.10	7
2000.....	1.22	0.26	0.69	2.17	7
1999.....	1.23	0.27	0.69	2.20	6
1998.....	1.21	0.24	0.70	2.14	7
1997.....	1.19	0.25	0.70	2.14	6
1996.....	1.22	0.24	0.70	2.16	6
1995.....	1.20	0.22	0.71	2.13	6
1994.....	1.17	0.20	0.77	2.14	7

Decile values (1 = highest) apply only to State-level data. Numbers may not sum because of rounding.

Table 3. Per capita ethanol consumption for States, census regions, and the United States, 1977–2009. [Gallons of ethanol, based on population age 14 and older] (Continued)

State or other geographic area	Per capita consumption				U.S. decile for all beverages
	Beer	Wine	Spirits	All beverages	
1993.....	1.23	0.20	0.77	2.20	6
1992.....	1.22	0.21	0.79	2.23	7
1991.....	1.16	0.22	0.78	2.17	7
1990.....	1.22	0.23	0.86	2.31	7
1989.....	1.18	0.24	0.94	2.37	6
1988.....	1.22	0.26	0.92	2.40	6
1987.....	1.22	0.27	1.00	2.49	6
1986.....	1.22	0.27	0.95	2.43	6
1985.....	1.17	0.25	1.01	2.43	7
1984.....	1.18	0.23	1.06	2.48	7
1983.....	1.14	0.22	1.05	2.42	7
1982.....	1.12	0.21	1.04	2.37	8
1981.....	1.10	0.18	1.09	2.38	8
1980.....	1.07	0.19	1.09	2.35	8
1979.....	1.17	0.19	1.22	2.58	7
1978.....	1.14	0.19	1.26	2.59	7
1977.....	1.08	0.16	1.23	2.47	7
Hawaii					
2009.....	1.30	0.53	0.75	2.58	4
2008.....	1.35	0.52	0.74	2.62	4
2007.....	1.34	0.49	0.80	2.62	3
2006.....	1.30	0.48	0.78	2.56	3
2005.....	1.32	0.46	0.74	2.52	3
2004.....	1.39	0.49	0.68	2.56	2
2003.....	1.30	0.42	0.67	2.39	4
2002.....	1.27	0.39	0.62	2.28	5
2001.....	1.30	0.38	0.60	2.28	5
2000.....	1.33	0.39	0.60	2.33	4
1999.....	1.31	0.39	0.56	2.26	5
1998.....	1.32	0.37	0.54	2.22	5
1997.....	1.37	0.37	0.56	2.30	4
1996.....	1.40	0.36	0.58	2.34	4
1995.....	1.41	0.34	0.57	2.32	4
1994.....	1.46	0.38	0.62	2.47	3
1993.....	1.49	0.37	0.65	2.51	3
1992.....	1.55	0.39	0.69	2.63	2
1991.....	1.57	0.40	0.70	2.67	2
1990.....	1.64	0.40	0.79	2.84	2
1989.....	1.54	0.43	0.79	2.76	3
1988.....	1.62	0.45	0.79	2.86	3
1987.....	1.57	0.40	0.76	2.73	4
1986.....	1.60	0.44	0.85	2.88	3
1985.....	1.59	0.41	0.88	2.88	3
1984.....	1.65	0.41	0.91	2.97	3
1983.....	1.87	0.44	1.12	3.43	1
1982.....	1.80	0.48	1.14	3.42	1
1981.....	1.74	0.44	1.16	3.34	2
1980.....	1.65	0.46	1.21	3.31	2
1979.....	1.60	0.44	1.28	3.32	3
1978.....	1.38	0.46	1.30	3.15	3
1977.....	1.61	0.36	1.26	3.23	2

Decile values (1 = highest) apply only to State-level data. Numbers may not sum because of rounding.

Table 3. Per capita ethanol consumption for States, census regions, and the United States, 1977–2009. [Gallons of ethanol, based on population age 14 and older] (Continued)

State or other geographic area	Per capita consumption				U.S. decile for all beverages
	Beer	Wine	Spirits	All beverages	
Idaho					
2009.....	1.05	0.92	0.70	2.68	3
2008.....	1.15	0.81	0.69	2.65	3
2007.....	1.18	0.74	0.67	2.59	4
2006.....	1.14	0.74	0.65	2.53	4
2005.....	1.10	0.73	0.61	2.44	4
2004.....	1.12	0.71	0.57	2.40	5
2003.....	1.14	0.64	0.54	2.33	5
2002.....	1.16	0.64	0.53	2.32	5
2001.....	1.14	0.63	0.53	2.30	5
2000.....	1.16	0.65	0.51	2.32	4
1999.....	1.17	0.68	0.52	2.36	4
1998.....	1.15	0.59	0.51	2.25	4
1997.....	1.14	0.36	0.50	2.00	7
1996.....	1.18	0.30	0.51	1.98	7
1995.....	1.15	0.30	0.53	1.98	7
1994.....	1.24	0.35	0.53	2.12	7
1993.....	1.26	0.29	0.55	2.11	7
1992.....	1.32	0.31	0.57	2.20	7
1991.....	1.31	0.32	0.56	2.19	7
1990.....	1.36	0.33	0.58	2.27	7
1989.....	1.23	0.30	0.56	2.09	8
1988.....	1.25	0.36	0.58	2.18	7
1987.....	1.31	0.38	0.58	2.26	7
1986.....	1.34	0.38	0.61	2.33	7
1985.....	1.35	0.36	0.71	2.42	7
1984.....	1.40	0.31	0.72	2.43	7
1983.....	1.44	0.30	0.76	2.51	7
1982.....	1.47	0.31	0.81	2.58	7
1981.....	1.54	0.33	0.83	2.70	6
1980.....	1.53	0.30	0.77	2.60	7
1979.....	1.55	0.27	0.84	2.65	6
1978.....	1.50	0.26	0.80	2.56	7
1977.....	1.50	0.22	0.79	2.52	7
Illinois					
2009.....	1.22	0.39	0.73	2.33	6
2008.....	1.21	0.38	0.73	2.32	6
2007.....	1.22	0.41	0.73	2.36	6
2006.....	1.23	0.37	0.73	2.33	6
2005.....	1.22	0.34	0.70	2.26	6
2004.....	1.22	0.31	0.67	2.21	6
2003.....	1.25	0.35	0.74	2.34	5
2002.....	1.27	0.33	0.65	2.25	6
2001.....	1.27	0.32	0.68	2.27	5
2000.....	1.28	0.32	0.63	2.24	6
1999.....	1.29	0.33	0.66	2.27	5
1998.....	1.28	0.34	0.64	2.25	4
1997.....	1.26	0.35	0.65	2.26	5
1996.....	1.27	0.35	0.68	2.30	4
1995.....	1.30	0.33	0.66	2.29	4
1994.....	1.32	0.34	0.69	2.35	4

Decile values (1 = highest) apply only to State-level data. Numbers may not sum because of rounding.

Table 3. Per capita ethanol consumption for States, census regions, and the United States, 1977–2009. [Gallons of ethanol, based on population age 14 and older] (Continued)

State or other geographic area	Per capita consumption				U.S. decile for all beverages
	Beer	Wine	Spirits	All beverages	
1993.....	1.32	0.34	0.72	2.38	4
1992.....	1.34	0.35	0.74	2.43	4
1991.....	1.38	0.34	0.76	2.48	4
1990.....	1.43	0.36	0.82	2.62	4
1989.....	1.38	0.35	0.82	2.56	4
1988.....	1.42	0.37	0.85	2.64	4
1987.....	1.41	0.39	0.87	2.66	4
1986.....	1.40	0.39	0.90	2.68	4
1985.....	1.38	0.37	0.98	2.72	5
1984.....	1.40	0.37	1.01	2.77	5
1983.....	1.42	0.35	1.03	2.80	5
1982.....	1.41	0.35	1.06	2.83	5
1981.....	1.43	0.35	1.12	2.91	5
1980.....	1.43	0.33	1.24	3.00	4
1979.....	1.45	0.33	1.17	2.94	4
1978.....	1.38	0.31	1.19	2.88	4
1977.....	1.35	0.30	1.22	2.87	4
Indiana					
2009.....	1.09	0.25	0.73	2.06	8
2008.....	1.11	0.24	0.74	2.09	8
2007.....	1.14	0.24	0.72	2.10	8
2006.....	1.10	0.25	0.66	2.00	8
2005.....	1.11	0.22	0.68	2.01	8
2004.....	1.14	0.22	0.66	2.02	8
2003.....	1.11	0.21	0.64	1.96	9
2002.....	1.13	0.20	0.60	1.93	9
2001.....	1.15	0.20	0.62	1.97	9
2000.....	1.16	0.21	0.61	1.98	8
1999.....	1.16	0.19	0.59	1.94	8
1998.....	1.14	0.19	0.58	1.91	8
1997.....	1.12	0.19	0.59	1.90	8
1996.....	1.13	0.19	0.57	1.89	8
1995.....	1.12	0.21	0.58	1.91	8
1994.....	1.15	0.20	0.59	1.94	8
1993.....	1.15	0.19	0.64	1.98	8
1992.....	1.16	0.20	0.58	1.95	9
1991.....	1.22	0.19	0.60	2.00	9
1990.....	1.26	0.20	0.63	2.09	8
1989.....	1.21	0.19	0.63	2.04	8
1988.....	1.23	0.21	0.66	2.10	8
1987.....	1.24	0.22	0.67	2.13	8
1986.....	1.25	0.23	0.67	2.14	8
1985.....	1.25	0.22	0.72	2.19	8
1984.....	1.26	0.21	0.72	2.19	8
1983.....	1.27	0.19	0.73	2.19	8
1982.....	1.29	0.18	0.76	2.23	8
1981.....	1.29	0.18	0.78	2.25	8
1980.....	1.26	0.17	0.77	2.21	8
1979.....	1.23	0.15	0.79	2.18	9
1978.....	1.19	0.16	0.79	2.14	8
1977.....	1.14	0.14	0.77	2.05	9

Decile values (1 = highest) apply only to State-level data. Numbers may not sum because of rounding.

Table 3. Per capita ethanol consumption for States, census regions, and the United States, 1977–2009. [Gallons of ethanol, based on population age 14 and older] (Continued)

State or other geographic area	Per capita consumption				U.S. decile for all beverages
	Beer	Wine	Spirits	All beverages	
Iowa					
2009.....	1.42	0.18	0.72	2.31	6
2008.....	1.41	0.17	0.70	2.29	7
2007.....	1.40	0.17	0.67	2.24	7
2006.....	1.38	0.16	0.65	2.19	7
2005.....	1.37	0.16	0.60	2.13	7
2004.....	1.37	0.16	0.57	2.09	7
2003.....	1.37	0.15	0.53	2.05	8
2002.....	1.37	0.14	0.51	2.02	8
2001.....	1.36	0.13	0.50	1.98	8
2000.....	1.35	0.13	0.50	1.98	8
1999.....	1.34	0.13	0.48	1.95	8
1998.....	1.31	0.12	0.46	1.90	8
1997.....	1.28	0.12	0.45	1.85	9
1996.....	1.28	0.12	0.45	1.85	9
1995.....	1.26	0.11	0.44	1.80	9
1994.....	1.30	0.10	0.44	1.84	9
1993.....	1.28	0.11	0.48	1.87	9
1992.....	1.31	0.13	0.46	1.90	9
1991.....	1.32	0.16	0.52	2.01	8
1990.....	1.34	0.18	0.54	2.06	9
1989.....	1.26	0.18	0.50	1.94	9
1988.....	1.28	0.20	0.52	1.99	9
1987.....	1.30	0.21	0.57	2.08	9
1986.....	1.32	0.19	0.53	2.04	9
1985.....	1.31	0.14	0.57	2.02	9
1984.....	1.36	0.12	0.61	2.09	9
1983.....	1.38	0.13	0.64	2.15	8
1982.....	1.39	0.13	0.65	2.17	9
1981.....	1.44	0.13	0.69	2.27	8
1980.....	1.41	0.13	0.71	2.25	8
1979.....	1.40	0.11	0.71	2.22	8
1978.....	1.38	0.11	0.74	2.22	8
1977.....	1.33	0.10	0.74	2.17	8
Kansas					
2009.....	1.18	0.14	0.67	1.99	9
2008.....	1.21	0.14	0.65	2.01	9
2007.....	1.17	0.15	0.64	1.96	9
2006.....	1.14	0.18	0.61	1.94	9
2005.....	1.14	0.18	0.57	1.88	9
2004.....	1.13	0.16	0.56	1.85	9
2003.....	1.15	0.17	0.56	1.88	10
2002.....	1.19	0.15	0.54	1.88	9
2001.....	1.12	0.15	0.53	1.79	9
2000.....	1.15	0.15	0.52	1.82	9
1999.....	1.14	0.16	0.54	1.84	9
1998.....	1.09	0.15	0.54	1.79	9
1997.....	1.09	0.14	0.48	1.71	10
1996.....	1.05	0.14	0.49	1.69	10
1995.....	1.08	0.15	0.50	1.72	9
1994.....	1.12	0.13	0.48	1.73	10

Decile values (1 = highest) apply only to State-level data. Numbers may not sum because of rounding.

Table 3. Per capita ethanol consumption for States, census regions, and the United States, 1977–2009. [Gallons of ethanol, based on population age 14 and older] (Continued)

State or other geographic area	Per capita consumption				U.S. decile for all beverages
	Beer	Wine	Spirits	All beverages	
1993.....	1.09	0.14	0.52	1.75	10
1992.....	1.09	0.14	0.55	1.78	10
1991.....	1.15	0.14	0.57	1.85	9
1990.....	1.13	0.13	0.53	1.79	10
1989.....	1.10	0.13	0.54	1.77	10
1988.....	1.11	0.21	0.56	1.88	9
1987.....	1.12	0.16	0.56	1.84	9
1986.....	1.12	0.17	0.59	1.88	9
1985.....	1.17	0.15	0.64	1.96	9
1984.....	1.18	0.14	0.63	1.95	9
1983.....	1.20	0.13	0.64	1.96	9
1982.....	1.22	0.13	0.67	2.02	9
1981.....	1.23	0.12	0.70	2.05	9
1980.....	1.23	0.11	0.62	1.96	9
1979.....	1.17	0.11	0.73	2.01	9
1978.....	1.14	0.12	0.64	1.89	10
1977.....	1.13	0.10	0.65	1.88	10
Kentucky					
2009.....	1.11	0.18	0.65	1.94	10
2008.....	1.03	0.18	0.65	1.86	10
2007.....	1.05	0.17	0.63	1.85	10
2006.....	1.04	0.17	0.62	1.83	10
2005.....	1.05	0.14	0.61	1.80	10
2004.....	1.07	0.17	0.57	1.81	10
2003.....	1.03	0.15	0.56	1.74	10
2002.....	1.08	0.14	0.54	1.76	10
2001.....	1.04	0.12	0.46	1.63	10
2000.....	1.07	0.14	0.54	1.74	10
1999.....	1.07	0.13	0.54	1.74	10
1998.....	1.07	0.13	0.53	1.72	10
1997.....	1.06	0.13	0.53	1.72	9
1996.....	1.05	0.13	0.54	1.72	10
1995.....	1.05	0.12	0.54	1.71	10
1994.....	1.08	0.11	0.55	1.73	10
1993.....	1.08	0.10	0.55	1.73	10
1992.....	1.04	0.11	0.56	1.71	10
1991.....	1.11	0.11	0.56	1.78	10
1990.....	1.12	0.11	0.60	1.83	10
1989.....	1.08	0.12	0.56	1.76	10
1988.....	1.08	0.12	0.59	1.79	10
1987.....	1.03	0.14	0.59	1.76	10
1986.....	1.09	0.13	0.62	1.84	10
1985.....	1.07	0.13	0.66	1.86	10
1984.....	1.05	0.12	0.68	1.85	10
1983.....	1.13	0.12	0.69	1.94	9
1982.....	1.14	0.12	0.73	1.99	9
1981.....	1.13	0.11	0.75	1.99	9
1980.....	1.08	0.10	0.74	1.91	10
1979.....	1.10	0.09	0.77	1.97	10
1978.....	1.07	0.09	0.77	1.93	10
1977.....	1.19	0.09	0.75	2.03	9

Decile values (1 = highest) apply only to State-level data. Numbers may not sum because of rounding.

Table 3. Per capita ethanol consumption for States, census regions, and the United States, 1977–2009. [Gallons of ethanol, based on population age 14 and older] (Continued)

State or other geographic area	Per capita consumption				U.S. decile for all beverages
	Beer	Wine	Spirits	All beverages	
Louisiana ^a					
2009.....	1.50	0.28	0.85	2.63	3
2008.....	1.56	0.27	0.83	2.66	3
2007.....	1.57	0.28	0.81	2.65	3
2006.....	1.61	0.25	0.80	2.66	3
2005.....	1.47	0.24	0.72	2.43	5
2004.....	1.39	0.26	0.73	2.38	5
2003.....	1.42	0.25	0.73	2.39	4
2002.....	1.33	0.24	0.71	2.27	5
2001.....	1.49	0.23	0.69	2.41	3
2000.....	1.50	0.22	0.70	2.43	3
1999.....	1.54	0.24	0.69	2.46	2
1998.....	1.50	0.23	0.70	2.43	3
1997.....	1.50	0.23	0.71	2.44	2
1996.....	1.50	0.22	0.72	2.44	2
1995.....	1.55	0.21	0.73	2.50	2
1994.....	1.45	0.21	0.73	2.39	3
1993.....	1.53	0.21	0.72	2.47	3
1992.....	1.55	0.22	0.74	2.51	3
1991.....	1.52	0.21	0.73	2.46	4
1990.....	1.53	0.23	0.78	2.54	5
1989.....	1.43	0.23	0.72	2.38	6
1988.....	1.44	0.24	0.69	2.37	7
1987.....	1.36	0.24	0.75	2.34	7
1986.....	1.39	0.26	0.78	2.42	7
1985.....	1.35	0.27	0.86	2.49	6
1984.....	1.40	0.29	0.94	2.63	6
1983.....	1.43	0.30	1.02	2.75	5
1982.....	1.49	0.30	1.00	2.78	5
1981.....	1.48	0.27	1.02	2.77	6
1980.....	1.41	0.27	1.04	2.71	6
1979.....	1.36	0.26	1.08	2.70	6
1978.....	1.35	0.25	1.07	2.67	6
1977.....	1.30	0.25	1.03	2.57	6
Maine					
2009.....	1.24	0.42	0.83	2.48	4
2008.....	1.26	0.42	0.82	2.50	5
2007.....	1.27	0.43	0.80	2.49	4
2006.....	1.26	0.42	0.79	2.47	4
2005.....	1.24	0.41	0.77	2.42	5
2004.....	1.24	0.41	0.76	2.41	4
2003.....	1.24	0.39	0.73	2.36	5
2002.....	1.23	0.39	0.69	2.31	5
2001.....	1.20	0.37	0.69	2.26	5
2000.....	1.17	0.39	0.73	2.29	5
1999.....	1.16	0.37	0.73	2.26	5
1998.....	1.14	0.34	0.68	2.16	6
1997.....	1.15	0.33	0.71	2.19	5
1996.....	1.17	0.33	0.71	2.22	5
1995.....	1.17	0.29	0.72	2.19	6
1994.....	1.13	0.27	0.77	2.17	6

Decile values (1 = highest) apply only to State-level data. Numbers may not sum because of rounding.

Table 3. Per capita ethanol consumption for States, census regions, and the United States, 1977–2009. [Gallons of ethanol, based on population age 14 and older] (Continued)

State or other geographic area	Per capita consumption				U.S. decile for all beverages
	Beer	Wine	Spirits	All beverages	
1993.....	1.15	0.29	0.79	2.22	6
1992.....	1.16	0.29	0.78	2.23	6
1991.....	1.18	0.30	0.77	2.25	6
1990.....	1.21	0.31	0.82	2.34	6
1989.....	1.25	0.34	0.85	2.44	5
1988.....	1.28	0.36	0.91	2.54	5
1987.....	1.26	0.38	0.91	2.55	5
1986.....	1.28	0.36	0.91	2.56	5
1985.....	1.29	0.33	0.94	2.56	6
1984.....	1.25	0.31	1.01	2.57	6
1983.....	1.32	0.29	1.03	2.63	6
1982.....	1.30	0.30	1.02	2.63	6
1981.....	1.24	0.28	1.05	2.57	7
1980.....	1.32	0.29	1.06	2.67	6
1979.....	1.30	0.27	1.08	2.65	6
1978.....	1.31	0.27	1.05	2.62	6
1977.....	1.37	0.23	1.04	2.64	6
Maryland					
2009.....	0.97	0.37	0.87	2.21	7
2008.....	0.99	0.36	0.85	2.21	7
2007.....	1.01	0.36	0.84	2.21	7
2006.....	1.02	0.34	0.83	2.19	7
2005.....	0.93	0.32	0.85	2.11	7
2004.....	1.03	0.33	0.79	2.15	7
2003.....	1.02	0.32	0.77	2.11	7
2002.....	1.05	0.31	0.75	2.11	7
2001.....	1.06	0.30	0.75	2.11	7
2000.....	1.04	0.30	0.75	2.09	7
1999.....	1.04	0.30	0.74	2.08	7
1998.....	1.05	0.30	0.73	2.08	7
1997.....	1.05	0.29	0.73	2.07	7
1996.....	1.05	0.29	0.74	2.08	7
1995.....	1.06	0.28	0.74	2.09	7
1994.....	1.09	0.28	0.78	2.15	6
1993.....	1.10	0.28	0.80	2.19	7
1992.....	1.11	0.29	0.86	2.26	6
1991.....	1.15	0.30	0.89	2.33	6
1990.....	1.22	0.33	0.96	2.51	5
1989.....	1.22	0.34	0.98	2.54	4
1988.....	1.26	0.36	1.01	2.62	4
1987.....	1.29	0.38	1.07	2.74	3
1986.....	1.29	0.39	1.08	2.75	4
1985.....	1.31	0.36	1.14	2.81	4
1984.....	1.31	0.36	1.17	2.84	4
1983.....	1.34	0.35	1.20	2.89	4
1982.....	1.27	0.32	1.17	2.77	5
1981.....	1.39	0.34	1.33	3.06	4
1980.....	1.42	0.33	1.35	3.09	4
1979.....	1.43	0.31	1.39	3.14	3
1978.....	1.41	0.31	1.38	3.09	3
1977.....	1.37	0.30	1.39	3.05	3

Decile values (1 = highest) apply only to State-level data. Numbers may not sum because of rounding.

Table 3. Per capita ethanol consumption for States, census regions, and the United States, 1977–2009. [Gallons of ethanol, based on population age 14 and older] (Continued)

State or other geographic area	Per capita consumption				U.S. decile for all beverages
	Beer	Wine	Spirits	All beverages	
Massachusetts					
2009.....	1.02	0.61	0.84	2.47	5
2008.....	1.07	0.62	0.84	2.53	4
2007.....	1.01	0.61	0.86	2.48	5
2006.....	1.10	0.61	0.84	2.55	3
2005.....	1.07	0.59	0.85	2.50	3
2004.....	1.10	0.58	0.84	2.52	3
2003.....	1.10	0.56	0.82	2.48	3
2002.....	1.13	0.54	0.80	2.46	3
2001.....	1.12	0.52	0.78	2.43	3
2000.....	1.16	0.51	0.87	2.55	2
1999.....	1.09	0.51	0.79	2.39	3
1998.....	1.14	0.50	0.75	2.39	3
1997.....	1.13	0.49	0.76	2.39	3
1996.....	1.11	0.48	0.77	2.35	3
1995.....	1.13	0.44	0.78	2.35	3
1994.....	1.14	0.44	0.80	2.38	3
1993.....	1.14	0.44	0.80	2.38	4
1992.....	1.12	0.44	0.82	2.38	5
1991.....	1.19	0.43	0.87	2.49	3
1990.....	1.22	0.45	0.97	2.63	3
1989.....	1.26	0.47	1.02	2.75	3
1988.....	1.29	0.50	1.07	2.86	3
1987.....	1.29	0.51	1.12	2.93	3
1986.....	1.31	0.53	1.12	2.96	3
1985.....	1.30	0.51	1.21	3.01	3
1984.....	1.30	0.51	1.24	3.04	3
1983.....	1.36	0.50	1.21	3.07	3
1982.....	1.35	0.49	1.22	3.07	3
1981.....	1.44	0.49	1.24	3.17	3
1980.....	1.47	0.45	1.27	3.19	3
1979.....	1.39	0.42	1.23	3.04	4
1978.....	1.37	0.40	1.25	3.02	4
1977.....	1.34	0.37	1.24	2.95	3
Michigan					
2009.....	1.10	0.31	0.80	2.22	7
2008.....	1.12	0.30	0.80	2.22	7
2007.....	1.12	0.30	0.78	2.19	7
2006.....	1.12	0.29	0.76	2.17	7
2005.....	1.14	0.28	0.75	2.17	7
2004.....	1.15	0.28	0.72	2.15	7
2003.....	1.17	0.26	0.70	2.13	7
2002.....	1.16	0.23	0.68	2.07	7
2001.....	1.19	0.24	0.68	2.10	7
2000.....	1.19	0.24	0.69	2.12	7
1999.....	1.19	0.24	0.68	2.11	7
1998.....	1.20	0.22	0.69	2.12	7
1997.....	1.17	0.22	0.66	2.06	7
1996.....	1.20	0.22	0.67	2.08	7
1995.....	1.20	0.19	0.66	2.06	7
1994.....	1.23	0.20	0.67	2.10	7

Decile values (1 = highest) apply only to State-level data. Numbers may not sum because of rounding.

Table 3. Per capita ethanol consumption for States, census regions, and the United States, 1977–2009. [Gallons of ethanol, based on population age 14 and older] (Continued)

State or other geographic area	Per capita consumption				U.S. decile for all beverages
	Beer	Wine	Spirits	All beverages	
1993.....	1.25	0.20	0.72	2.18	7
1992.....	1.26	0.22	0.74	2.21	7
1991.....	1.30	0.22	0.74	2.26	6
1990.....	1.33	0.28	0.80	2.42	6
1989.....	1.29	0.30	0.80	2.38	6
1988.....	1.31	0.32	0.84	2.47	6
1987.....	1.32	0.33	0.85	2.50	6
1986.....	1.33	0.33	0.90	2.56	5
1985.....	1.30	0.32	0.95	2.58	6
1984.....	1.32	0.31	0.97	2.60	6
1983.....	1.35	0.28	0.97	2.60	6
1982.....	1.35	0.39	0.98	2.72	6
1981.....	1.34	0.29	1.00	2.63	6
1980.....	1.34	0.28	1.03	2.65	6
1979.....	1.37	0.25	1.03	2.65	6
1978.....	1.43	0.25	1.05	2.74	5
1977.....	1.45	0.24	1.02	2.71	5
Minnesota					
2009.....	1.19	0.37	1.04	2.59	4
2008.....	1.21	0.37	1.03	2.60	4
2007.....	1.16	0.36	0.97	2.49	4
2006.....	1.15	0.32	0.93	2.40	5
2005.....	1.18	0.32	0.96	2.47	4
2004.....	1.23	0.31	0.93	2.47	3
2003.....	1.21	0.29	0.90	2.41	4
2002.....	1.25	0.28	0.87	2.40	4
2001.....	1.25	0.26	0.87	2.38	4
2000.....	1.24	0.26	0.87	2.37	4
1999.....	1.23	0.27	0.86	2.36	4
1998.....	1.16	0.27	0.84	2.27	4
1997.....	1.23	0.27	0.83	2.33	3
1996.....	1.25	0.26	0.83	2.34	4
1995.....	1.24	0.26	0.83	2.32	3
1994.....	1.27	0.25	0.83	2.35	4
1993.....	1.24	0.24	0.84	2.33	5
1992.....	1.25	0.25	0.85	2.35	5
1991.....	1.30	0.24	0.81	2.35	5
1990.....	1.32	0.27	0.96	2.55	4
1989.....	1.28	0.27	0.88	2.43	5
1988.....	1.30	0.30	0.89	2.49	5
1987.....	1.31	0.32	0.94	2.56	5
1986.....	1.30	0.33	0.92	2.56	6
1985.....	1.31	0.31	1.06	2.68	5
1984.....	1.34	0.28	1.07	2.68	5
1983.....	1.37	0.27	1.10	2.74	6
1982.....	1.36	0.27	1.11	2.75	6
1981.....	1.39	0.27	1.18	2.83	5
1980.....	1.40	0.26	1.20	2.85	5
1979.....	1.35	0.24	1.16	2.75	5
1978.....	1.31	0.23	1.15	2.69	5
1977.....	1.30	0.20	1.15	2.65	5

Decile values (1 = highest) apply only to State-level data. Numbers may not sum because of rounding.

Table 3. Per capita ethanol consumption for States, census regions, and the United States, 1977–2009. [Gallons of ethanol, based on population age 14 and older] (Continued)

State or other geographic area	Per capita consumption				U.S. decile for all beverages
	Beer	Wine	Spirits	All beverages	
Mississippi					
2009.....	1.41	0.11	0.71	2.24	7
2008.....	1.45	0.12	0.70	2.28	7
2007.....	1.46	0.12	0.68	2.26	7
2006.....	1.46	0.12	0.67	2.25	6
2005.....	1.40	0.12	0.65	2.17	7
2004.....	1.39	0.12	0.63	2.13	7
2003.....	1.40	0.12	0.62	2.14	7
2002.....	1.40	0.12	0.61	2.12	7
2001.....	1.39	0.11	0.60	2.11	7
2000.....	1.44	0.09	0.60	2.13	7
1999.....	1.45	0.10	0.61	2.15	7
1998.....	1.40	0.09	0.59	2.08	7
1997.....	1.37	0.09	0.61	2.07	7
1996.....	1.37	0.09	0.62	2.08	7
1995.....	1.36	0.09	0.61	2.06	7
1994.....	1.28	0.08	0.63	2.00	7
1993.....	1.37	0.10	0.63	2.11	7
1992.....	1.35	0.09	0.63	2.08	8
1991.....	1.32	0.09	0.64	2.05	8
1990.....	1.34	0.09	0.65	2.08	8
1989.....	1.26	0.09	0.65	2.00	9
1988.....	1.28	0.09	0.66	2.03	9
1987.....	1.26	0.09	0.66	2.01	9
1986.....	1.26	0.10	0.68	2.04	9
1985.....	1.21	0.10	0.73	2.04	9
1984.....	1.19	0.11	0.77	2.06	9
1983.....	1.19	0.11	0.79	2.09	9
1982.....	1.19	0.11	0.82	2.11	9
1981.....	1.19	0.11	0.84	2.14	9
1980.....	1.13	0.10	0.86	2.09	9
1979.....	1.15	0.10	0.84	2.09	9
1978.....	1.16	0.10	0.91	2.18	8
1977.....	1.08	0.11	0.86	2.05	8
Missouri					
2009.....	1.30	0.30	0.83	2.42	5
2008.....	1.32	0.30	0.80	2.42	5
2007.....	1.33	0.30	0.78	2.41	5
2006.....	1.33	0.28	0.76	2.37	5
2005.....	1.30	0.27	0.72	2.29	6
2004.....	1.32	0.26	0.71	2.30	5
2003.....	1.33	0.26	0.69	2.27	6
2002.....	1.47	0.25	0.67	2.39	4
2001.....	1.34	0.23	0.67	2.25	6
2000.....	1.35	0.23	0.67	2.25	5
1999.....	1.35	0.23	0.66	2.23	6
1998.....	1.33	0.23	0.63	2.18	6
1997.....	1.30	0.22	0.63	2.15	6
1996.....	1.31	0.22	0.57	2.09	7
1995.....	1.31	0.20	0.62	2.14	6
1994.....	1.36	0.19	0.66	2.21	6

Decile values (1 = highest) apply only to State-level data. Numbers may not sum because of rounding.

Table 3. Per capita ethanol consumption for States, census regions, and the United States, 1977–2009. [Gallons of ethanol, based on population age 14 and older] (Continued)

State or other geographic area	Per capita consumption				U.S. decile for all beverages
	Beer	Wine	Spirits	All beverages	
1993.....	1.33	0.20	0.67	2.20	6
1992.....	1.34	0.21	0.69	2.24	6
1991.....	1.35	0.22	0.64	2.20	7
1990.....	1.37	0.22	0.70	2.30	7
1989.....	1.33	0.22	0.69	2.24	7
1988.....	1.33	0.25	0.69	2.28	7
1987.....	1.36	0.27	0.72	2.35	7
1986.....	1.36	0.28	0.72	2.36	7
1985.....	1.33	0.26	0.76	2.36	7
1984.....	1.34	0.25	0.68	2.27	8
1983.....	1.37	0.22	0.78	2.37	8
1982.....	1.38	0.21	0.79	2.38	7
1981.....	1.40	0.21	0.83	2.45	7
1980.....	1.39	0.20	0.84	2.44	7
1979.....	1.37	0.20	0.86	2.43	7
1978.....	1.31	0.20	0.89	2.40	7
1977.....	1.23	0.19	0.83	2.25	8
Montana ^b					
2009.....	1.66	0.45	0.88	2.99	2
2008.....	1.68	0.44	0.87	2.99	2
2007.....	1.68	0.43	0.86	2.97	2
2006.....	1.64	0.41	0.83	2.88	2
2005.....	1.53	0.35	0.78	2.65	2
2004.....	1.54	0.34	0.74	2.63	2
2003.....	1.55	0.33	0.72	2.59	2
2002.....	1.61	0.33	0.70	2.64	2
2001.....	1.57	0.30	0.68	2.55	2
2000.....	1.55	0.29	0.68	2.53	2
1999.....	1.56	0.29	0.67	2.52	2
1998.....	1.51	0.28	0.65	2.44	2
1997.....	1.49	0.29	0.63	2.42	3
1996.....	1.49	0.27	0.64	2.40	3
1995.....	1.49	0.26	0.78	2.54	2
1994.....	1.57	0.24	0.70	2.51	2
1993.....	1.49	0.25	0.73	2.47	3
1992.....	1.59	0.26	0.75	2.61	2
1991.....	1.61	0.28	0.76	2.64	3
1990.....	1.60	0.29	0.77	2.67	3
1989.....	1.56	0.29	0.72	2.57	4
1988.....	1.59	0.32	0.76	2.66	4
1987.....	1.57	0.33	0.77	2.67	4
1986.....	1.58	0.34	0.81	2.73	4
1985.....	1.60	0.33	0.88	2.81	4
1984.....	1.70	0.32	0.93	2.95	3
1983.....	1.79	0.32	0.99	3.09	3
1982.....	1.82	0.32	1.02	3.17	3
1981.....	1.90	0.33	1.05	3.28	3
1980.....	1.82	0.35	1.04	3.21	3
1979.....	1.83	0.41	1.05	3.29	3
1978.....	1.82	0.20	1.07	3.10	3
1977.....	1.83	0.20	1.10	3.12	3

Decile values (1 = highest) apply only to State-level data. Numbers may not sum because of rounding.

Table 3. Per capita ethanol consumption for States, census regions, and the United States, 1977–2009. [Gallons of ethanol, based on population age 14 and older] (Continued)

State or other geographic area	Per capita consumption				U.S. decile for all beverages
	Beer	Wine	Spirits	All beverages	
Nebraska					
2009.....	1.46	0.20	0.68	2.35	6
2008.....	1.47	0.21	0.68	2.36	6
2007.....	1.45	0.21	0.67	2.33	6
2006.....	1.43	0.21	0.71	2.35	6
2005.....	1.41	0.20	0.68	2.29	5
2004.....	1.43	0.19	0.64	2.26	6
2003.....	1.42	0.18	0.63	2.23	6
2002.....	1.45	0.17	0.61	2.23	6
2001.....	1.43	0.16	0.60	2.19	6
2000.....	1.44	0.17	0.62	2.23	6
1999.....	1.42	0.17	0.60	2.19	6
1998.....	1.39	0.18	0.58	2.16	6
1997.....	1.35	0.18	0.56	2.09	7
1996.....	1.35	0.18	0.57	2.11	6
1995.....	1.35	0.19	0.57	2.10	7
1994.....	1.39	0.18	0.57	2.14	7
1993.....	1.37	0.18	0.59	2.14	7
1992.....	1.37	0.18	0.61	2.16	7
1991.....	1.40	0.18	0.61	2.19	7
1990.....	1.41	0.20	0.64	2.25	7
1989.....	1.37	0.19	0.62	2.18	7
1988.....	1.37	0.22	0.65	2.23	7
1987.....	1.40	0.22	0.65	2.27	7
1986.....	1.38	0.23	0.67	2.28	7
1985.....	1.40	0.22	0.75	2.37	7
1984.....	1.44	0.20	0.76	2.41	7
1983.....	1.49	0.21	0.79	2.49	7
1982.....	1.50	0.28	0.58	2.37	7
1981.....	1.57	0.20	0.88	2.66	6
1980.....	1.56	0.19	0.89	2.64	6
1979.....	1.50	0.18	0.88	2.57	7
1978.....	1.47	0.18	0.89	2.54	7
1977.....	1.45	0.17	0.91	2.53	6
Nevada					
2009.....	1.57	0.58	1.15	3.30	1
2008.....	1.68	0.63	1.33	3.64	1
2007.....	1.71	0.64	1.27	3.61	1
2006.....	1.74	0.66	1.30	3.70	1
2005.....	1.71	0.62	1.23	3.56	1
2004.....	1.75	0.64	1.26	3.66	1
2003.....	1.76	0.62	1.25	3.63	1
2002.....	1.75	0.61	1.24	3.60	1
2001.....	1.81	0.60	1.22	3.63	1
2000.....	1.79	0.62	1.26	3.67	1
1999.....	1.82	0.63	1.29	3.74	1
1998.....	1.80	0.58	1.23	3.62	1
1997.....	1.84	0.58	1.30	3.72	1
1996.....	1.91	0.59	1.39	3.89	1
1995.....	1.87	0.58	1.39	3.84	1
1994.....	1.93	0.57	1.51	4.00	1

Decile values (1 = highest) apply only to State-level data. Numbers may not sum because of rounding.

Table 3. Per capita ethanol consumption for States, census regions, and the United States, 1977–2009. [Gallons of ethanol, based on population age 14 and older] (Continued)

State or other geographic area	Per capita consumption				U.S. decile for all beverages
	Beer	Wine	Spirits	All beverages	
1993.....	1.95	0.58	1.54	4.06	1
1992.....	2.02	0.62	1.61	4.25	1
1991.....	2.05	0.63	1.63	4.31	1
1990.....	2.17	0.69	1.92	4.78	1
1989.....	2.18	0.73	1.92	4.83	1
1988.....	2.13	0.78	2.00	4.91	1
1987.....	2.05	0.84	2.09	4.99	1
1986.....	2.07	0.88	2.11	5.05	1
1985.....	1.96	0.84	2.18	4.99	1
1984.....	2.01	0.82	2.36	5.19	1
1983.....	1.98	0.79	2.45	5.22	1
1982.....	1.99	0.77	2.50	5.25	1
1981.....	2.08	0.80	2.71	5.59	1
1980.....	2.09	0.79	2.94	5.82	1
1979.....	2.28	0.88	3.28	6.44	1
1978.....	2.20	0.85	3.65	6.69	1
1977.....	2.15	0.83	3.85	6.84	1
New Hampshire					
2009.....	1.72	0.84	1.82	4.38	1
2008.....	1.71	0.81	1.79	4.31	1
2007.....	1.74	0.74	1.75	4.22	1
2006.....	1.73	0.72	1.76	4.21	1
2005.....	1.72	0.71	1.68	4.11	1
2004.....	1.71	0.70	1.65	4.07	1
2003.....	1.72	0.70	1.61	4.03	1
2002.....	1.73	0.69	1.63	4.05	1
2001.....	1.74	0.65	1.61	4.00	1
2000.....	1.75	0.56	1.69	4.00	1
1999.....	1.75	0.56	1.70	4.01	1
1998.....	1.72	0.54	1.73	3.98	1
1997.....	1.73	0.55	1.76	4.04	1
1996.....	1.73	0.55	1.85	4.13	1
1995.....	1.74	0.51	1.87	4.12	1
1994.....	1.75	0.48	1.90	4.13	1
1993.....	1.83	0.54	2.01	4.38	1
1992.....	1.81	0.52	1.96	4.30	1
1991.....	1.85	0.49	1.96	4.30	1
1990.....	1.85	0.49	1.97	4.30	1
1989.....	1.87	0.50	1.99	4.37	1
1988.....	1.91	0.49	1.94	4.33	1
1987.....	1.93	0.50	1.98	4.41	1
1986.....	1.93	0.52	2.06	4.51	1
1985.....	1.99	0.53	2.21	4.73	1
1984.....	1.99	0.59	2.33	4.91	1
1983.....	2.17	0.56	2.35	5.08	1
1982.....	1.89	0.58	2.34	4.81	1
1981.....	1.89	0.59	2.44	4.92	1
1980.....	2.21	0.69	2.86	5.76	1
1979.....	1.98	0.62	2.61	5.20	1
1978.....	1.99	0.54	2.94	5.46	1
1977.....	1.89	0.50	2.93	5.32	1

Decile values (1 = highest) apply only to State-level data. Numbers may not sum because of rounding.

Table 3. Per capita ethanol consumption for States, census regions, and the United States, 1977–2009. [Gallons of ethanol, based on population age 14 and older] (Continued)

State or other geographic area	Per capita consumption				U.S. decile for all beverages
	Beer	Wine	Spirits	All beverages	
New Jersey					
2009.....	0.92	0.57	0.87	2.35	5
2008.....	0.94	0.55	0.86	2.35	6
2007.....	0.93	0.55	0.86	2.34	6
2006.....	0.94	0.53	0.84	2.32	6
2005.....	0.95	0.51	0.82	2.28	6
2004.....	0.96	0.52	0.82	2.29	6
2003.....	0.95	0.50	0.79	2.24	6
2002.....	0.98	0.49	0.77	2.24	6
2001.....	0.99	0.47	0.75	2.20	6
2000.....	0.96	0.47	0.77	2.19	6
1999.....	0.97	0.46	0.71	2.14	7
1998.....	0.98	0.46	0.69	2.12	7
1997.....	0.98	0.42	0.74	2.15	6
1996.....	1.00	0.44	0.76	2.20	6
1995.....	1.03	0.44	0.75	2.22	5
1994.....	1.04	0.43	0.79	2.27	5
1993.....	1.07	0.42	0.79	2.29	5
1992.....	1.07	0.44	0.83	2.34	5
1991.....	1.09	0.43	0.82	2.34	6
1990.....	1.15	0.48	0.95	2.58	4
1989.....	1.13	0.50	0.96	2.59	3
1988.....	1.15	0.51	0.93	2.58	4
1987.....	1.18	0.54	1.01	2.72	4
1986.....	1.18	0.56	1.03	2.77	4
1985.....	1.18	0.55	1.08	2.81	4
1984.....	1.19	0.55	1.10	2.83	4
1983.....	1.21	0.52	1.13	2.86	4
1982.....	1.22	0.52	1.13	2.87	4
1981.....	1.22	0.51	1.15	2.87	5
1980.....	1.23	0.47	1.13	2.83	5
1979.....	1.18	0.43	1.10	2.71	6
1978.....	1.17	0.42	1.10	2.69	6
1977.....	1.16	0.40	1.13	2.69	5
New Mexico					
2009.....	1.37	0.32	0.74	2.42	5
2008.....	1.43	0.31	0.72	2.47	5
2007.....	1.41	0.31	0.71	2.43	5
2006.....	1.38	0.31	0.70	2.39	5
2005.....	1.48	0.29	0.67	2.44	4
2004.....	1.45	0.25	0.66	2.35	5
2003.....	1.52	0.27	0.61	2.40	4
2002.....	1.53	0.26	0.61	2.40	3
2001.....	1.54	0.25	0.61	2.39	3
2000.....	1.53	0.25	0.61	2.38	3
1999.....	1.53	0.25	0.59	2.36	4
1998.....	1.49	0.24	0.58	2.31	4
1997.....	1.51	0.24	0.58	2.33	3
1996.....	1.55	0.24	0.59	2.38	3
1995.....	1.56	0.24	0.60	2.40	3
1994.....	1.46	0.19	0.60	2.25	5

Decile values (1 = highest) apply only to State-level data. Numbers may not sum because of rounding.

Table 3. Per capita ethanol consumption for States, census regions, and the United States, 1977–2009. [Gallons of ethanol, based on population age 14 and older] (Continued)

State or other geographic area	Per capita consumption				U.S. decile for all beverages
	Beer	Wine	Spirits	All beverages	
1993.....	1.53	0.23	0.63	2.39	3
1992.....	1.56	0.25	0.66	2.47	4
1991.....	1.64	0.26	0.64	2.54	3
1990.....	1.68	0.28	0.68	2.64	3
1989.....	1.64	0.29	0.65	2.58	4
1988.....	1.63	0.33	0.67	2.64	4
1987.....	1.63	0.35	0.67	2.65	4
1986.....	1.64	0.35	0.70	2.70	4
1985.....	1.70	0.36	0.77	2.83	4
1984.....	1.71	0.28	0.76	2.75	5
1983.....	1.72	0.31	0.98	3.00	4
1982.....	1.72	0.34	0.94	3.00	4
1981.....	1.74	0.32	0.95	3.01	4
1980.....	1.66	0.32	1.00	2.99	4
1979.....	1.71	0.30	1.01	3.02	4
1978.....	1.68	0.32	0.98	2.99	4
1977.....	1.65	0.32	0.96	2.93	4
New York					
2009.....	0.91	0.46	0.69	2.06	8
2008.....	0.92	0.47	0.67	2.05	8
2007.....	0.92	0.46	0.68	2.06	8
2006.....	0.88	0.45	0.65	1.99	9
2005.....	0.90	0.43	0.64	1.97	8
2004.....	0.91	0.41	0.62	1.95	9
2003.....	0.93	0.40	0.61	1.93	9
2002.....	0.95	0.38	0.59	1.91	9
2001.....	0.96	0.37	0.56	1.88	9
2000.....	0.92	0.38	0.58	1.88	9
1999.....	0.93	0.37	0.56	1.85	9
1998.....	0.95	0.38	0.51	1.84	9
1997.....	0.94	0.37	0.57	1.87	8
1996.....	0.97	0.36	0.57	1.90	8
1995.....	0.98	0.38	0.57	1.93	8
1994.....	0.98	0.35	0.60	1.93	8
1993.....	1.00	0.35	0.62	1.98	8
1992.....	1.04	0.37	0.68	2.09	8
1991.....	1.09	0.37	0.69	2.14	7
1990.....	1.13	0.41	0.76	2.30	7
1989.....	1.12	0.42	0.82	2.36	7
1988.....	1.15	0.45	0.87	2.47	6
1987.....	1.15	0.48	0.90	2.53	5
1986.....	1.13	0.50	0.92	2.55	6
1985.....	1.14	0.49	0.98	2.62	5
1984.....	1.15	0.49	1.03	2.67	5
1983.....	1.23	0.49	1.05	2.77	5
1982.....	1.26	0.48	1.10	2.84	5
1981.....	1.25	0.46	1.12	2.83	5
1980.....	1.28	0.46	1.18	2.91	5
1979.....	1.21	0.44	1.17	2.82	5
1978.....	1.18	0.42	1.17	2.77	5
1977.....	1.18	0.38	1.17	2.74	5

Decile values (1 = highest) apply only to State-level data. Numbers may not sum because of rounding.

Table 3. Per capita ethanol consumption for States, census regions, and the United States, 1977–2009. [Gallons of ethanol, based on population age 14 and older] (Continued)

State or other geographic area	Per capita consumption				U.S. decile for all beverages
	Beer	Wine	Spirits	All beverages	
North Carolina					
2009.....	1.10	0.34	0.58	2.02	8
2008.....	1.14	0.34	0.58	2.06	8
2007.....	1.16	0.33	0.56	2.06	9
2006.....	1.15	0.33	0.55	2.02	8
2005.....	1.13	0.30	0.54	1.97	9
2004.....	1.17	0.30	0.53	2.00	8
2003.....	1.21	0.27	0.52	2.00	8
2002.....	1.25	0.27	0.50	2.02	8
2001.....	1.23	0.25	0.51	2.00	8
2000.....	1.19	0.23	0.52	1.94	8
1999.....	1.16	0.24	0.51	1.90	8
1998.....	1.13	0.23	0.50	1.87	8
1997.....	1.15	0.23	0.51	1.89	8
1996.....	1.14	0.24	0.52	1.90	8
1995.....	1.12	0.22	0.53	1.86	8
1994.....	1.14	0.21	0.54	1.89	8
1993.....	1.14	0.22	0.56	1.92	9
1992.....	1.14	0.23	0.59	1.96	8
1991.....	1.11	0.24	0.60	1.96	9
1990.....	1.16	0.27	0.65	2.08	9
1989.....	1.13	0.27	0.66	2.06	8
1988.....	1.12	0.28	0.68	2.09	8
1987.....	1.11	0.28	0.71	2.10	8
1986.....	1.12	0.30	0.74	2.15	8
1985.....	1.09	0.27	0.76	2.13	8
1984.....	1.11	0.24	0.78	2.13	8
1983.....	1.10	0.22	0.80	2.12	9
1982.....	1.07	0.21	0.85	2.13	9
1981.....	1.10	0.21	0.86	2.17	9
1980.....	1.11	0.20	0.86	2.17	9
1979.....	1.08	0.22	0.88	2.18	8
1978.....	1.06	0.20	0.86	2.12	9
1977.....	1.01	0.20	0.84	2.05	8
North Dakota					
2009.....	1.63	0.25	1.16	3.03	1
2008.....	1.63	0.24	1.14	3.00	1
2007.....	1.57	0.23	1.08	2.88	2
2006.....	1.52	0.21	1.01	2.74	2
2005.....	1.51	0.19	0.95	2.65	2
2004.....	1.50	0.18	0.83	2.50	3
2003.....	1.54	0.17	0.86	2.56	2
2002.....	1.51	0.16	0.84	2.51	3
2001.....	1.46	0.15	0.80	2.41	3
2000.....	1.47	0.15	0.79	2.41	3
1999.....	1.49	0.15	0.78	2.42	3
1998.....	1.45	0.13	0.76	2.35	3
1997.....	1.40	0.13	0.77	2.30	4
1996.....	1.40	0.13	0.77	2.29	4
1995.....	1.35	0.16	0.77	2.28	4
1994.....	1.39	0.15	0.78	2.32	4

Decile values (1 = highest) apply only to State-level data. Numbers may not sum because of rounding.

Table 3. Per capita ethanol consumption for States, census regions, and the United States, 1977–2009. [Gallons of ethanol, based on population age 14 and older] (Continued)

State or other geographic area	Per capita consumption				U.S. decile for all beverages
	Beer	Wine	Spirits	All beverages	
1993.....	1.37	0.15	0.84	2.36	4
1992.....	1.38	0.15	0.85	2.39	5
1991.....	1.43	0.16	0.86	2.44	4
1990.....	1.47	0.17	0.93	2.56	4
1989.....	1.38	0.17	0.84	2.38	6
1988.....	1.38	0.19	0.86	2.43	6
1987.....	1.35	0.20	0.87	2.42	6
1986.....	1.32	0.22	0.86	2.40	7
1985.....	1.33	0.19	0.96	2.48	7
1984.....	1.40	0.17	0.98	2.55	6
1983.....	1.48	0.17	1.05	2.71	6
1982.....	1.52	0.18	1.09	2.79	5
1981.....	1.53	0.18	1.14	2.85	5
1980.....	1.53	0.17	1.14	2.83	5
1979.....	1.45	0.16	1.10	2.71	6
1978.....	1.45	0.16	1.15	2.76	5
1977.....	1.35	0.15	1.12	2.62	6
Ohio					
2009.....	1.28	0.26	0.47	2.01	9
2008.....	1.32	0.26	0.46	2.04	9
2007.....	1.33	0.25	0.45	2.03	9
2006.....	1.32	0.24	0.44	2.00	9
2005.....	1.31	0.23	0.43	1.97	9
2004.....	1.33	0.22	0.41	1.96	9
2003.....	1.33	0.22	0.48	2.03	8
2002.....	1.34	0.21	0.47	2.02	8
2001.....	1.33	0.21	0.47	2.00	8
2000.....	1.30	0.19	0.50	1.99	8
1999.....	1.32	0.20	0.48	2.00	8
1998.....	1.31	0.19	0.47	1.97	8
1997.....	1.28	0.18	0.46	1.91	8
1996.....	1.30	0.18	0.45	1.93	8
1995.....	1.28	0.17	0.46	1.90	8
1994.....	1.31	0.16	0.37	1.85	9
1993.....	1.29	0.16	0.50	1.95	8
1992.....	1.32	0.17	0.50	1.98	8
1991.....	1.33	0.18	0.51	2.03	8
1990.....	1.34	0.22	0.53	2.09	8
1989.....	1.35	0.22	0.50	2.07	8
1988.....	1.34	0.24	0.54	2.11	8
1987.....	1.35	0.24	0.59	2.17	8
1986.....	1.32	0.25	0.60	2.17	8
1985.....	1.37	0.25	0.59	2.20	8
1984.....	1.41	0.25	0.61	2.26	8
1983.....	1.36	0.22	0.65	2.22	8
1982.....	1.40	0.22	0.66	2.28	8
1981.....	1.35	0.22	0.68	2.25	8
1980.....	1.39	0.22	0.72	2.33	8
1979.....	1.36	0.20	0.71	2.26	8
1978.....	1.19	0.20	0.70	2.09	9
1977.....	1.17	0.18	0.70	2.04	9

Decile values (1 = highest) apply only to State-level data. Numbers may not sum because of rounding.

Table 3. Per capita ethanol consumption for States, census regions, and the United States, 1977–2009. [Gallons of ethanol, based on population age 14 and older] (Continued)

State or other geographic area	Per capita consumption				U.S. decile for all beverages
	Beer	Wine	Spirits	All beverages	
Oklahoma					
2009.....	1.18	0.18	0.58	1.95	9
2008.....	1.23	0.18	0.58	1.99	9
2007.....	1.18	0.17	0.58	1.93	9
2006.....	1.15	0.17	0.57	1.88	10
2005.....	1.09	0.16	0.55	1.81	10
2004.....	1.10	0.13	0.45	1.69	10
2003.....	1.06	0.13	0.73	1.93	9
2002.....	1.11	0.13	0.58	1.82	10
2001.....	1.11	0.12	0.43	1.65	10
2000.....	1.13	0.12	0.44	1.69	10
1999.....	1.11	0.12	0.44	1.68	10
1998.....	1.12	0.12	0.43	1.68	10
1997.....	1.10	0.12	0.43	1.65	10
1996.....	1.09	0.12	0.45	1.66	10
1995.....	1.10	0.12	0.44	1.66	10
1994.....	1.15	0.13	0.50	1.78	9
1993.....	1.11	0.11	0.48	1.70	10
1992.....	1.13	0.13	0.55	1.81	9
1991.....	1.09	0.13	0.54	1.76	10
1990.....	1.12	0.14	0.55	1.81	10
1989.....	1.05	0.13	0.53	1.70	10
1988.....	1.05	0.14	0.50	1.69	10
1987.....	1.04	0.15	0.57	1.76	10
1986.....	1.04	0.15	0.61	1.80	10
1985.....	1.04	0.15	0.68	1.87	10
1984.....	1.01	0.16	0.74	1.91	9
1983.....	1.05	0.16	0.77	1.98	9
1982.....	1.17	0.16	0.83	2.17	8
1981.....	1.14	0.16	0.83	2.13	9
1980.....	1.08	0.16	0.71	1.95	9
1979.....	1.05	0.13	0.80	1.98	9
1978.....	1.08	0.14	0.82	2.04	9
1977.....	1.07	0.14	0.78	1.98	9
Oregon					
2009.....	1.28	0.49	0.82	2.59	4
2008.....	1.21	0.49	0.82	2.53	4
2007.....	1.29	0.49	0.81	2.59	3
2006.....	1.26	0.49	0.78	2.53	4
2005.....	1.23	0.48	0.74	2.46	4
2004.....	1.22	0.49	0.71	2.42	4
2003.....	1.20	0.47	0.68	2.35	5
2002.....	1.22	0.46	0.66	2.34	5
2001.....	1.22	0.43	0.65	2.30	5
2000.....	1.20	0.44	0.64	2.28	5
1999.....	1.21	0.43	0.63	2.27	5
1998.....	1.20	0.43	0.61	2.25	5
1997.....	1.19	0.44	0.60	2.24	5
1996.....	1.23	0.44	0.61	2.27	5
1995.....	1.21	0.42	0.59	2.23	5
1994.....	1.23	0.37	0.62	2.21	6

Decile values (1 = highest) apply only to State-level data. Numbers may not sum because of rounding.

Table 3. Per capita ethanol consumption for States, census regions, and the United States, 1977–2009. [Gallons of ethanol, based on population age 14 and older] (Continued)

State or other geographic area	Per capita consumption				U.S. decile for all beverages
	Beer	Wine	Spirits	All beverages	
1993.....	1.24	0.43	0.64	2.31	5
1992.....	1.29	0.46	0.67	2.41	4
1991.....	1.28	0.44	0.67	2.38	5
1990.....	1.32	0.47	0.73	2.51	5
1989.....	1.26	0.46	0.69	2.41	6
1988.....	1.27	0.51	0.71	2.48	5
1987.....	1.26	0.53	0.72	2.50	6
1986.....	1.26	0.54	0.73	2.54	6
1985.....	1.25	0.55	0.77	2.57	6
1984.....	1.28	0.53	0.82	2.63	6
1983.....	1.31	0.53	0.85	2.69	6
1982.....	1.33	0.53	0.88	2.74	6
1981.....	1.38	0.50	0.92	2.80	6
1980.....	1.37	0.51	0.94	2.82	5
1979.....	1.39	0.47	0.96	2.82	5
1978.....	1.34	0.47	0.98	2.79	5
1977.....	1.33	0.46	0.96	2.74	5
Pennsylvania					
2009.....	1.35	0.23	0.61	2.19	8
2008.....	1.36	0.23	0.60	2.19	8
2007.....	1.34	0.24	0.59	2.16	8
2006.....	1.30	0.24	0.57	2.12	8
2005.....	1.29	0.24	0.55	2.08	8
2004.....	1.30	0.24	0.54	2.08	8
2003.....	1.30	0.23	0.51	2.04	8
2002.....	1.35	0.22	0.49	2.06	8
2001.....	1.32	0.20	0.48	2.00	8
2000.....	1.21	0.21	0.47	1.90	9
1999.....	1.20	0.21	0.46	1.87	9
1998.....	1.21	0.19	0.45	1.86	9
1997.....	1.20	0.19	0.44	1.84	9
1996.....	1.22	0.19	0.45	1.86	9
1995.....	1.23	0.18	0.45	1.86	9
1994.....	1.28	0.18	0.47	1.93	8
1993.....	1.31	0.17	0.48	1.96	8
1992.....	1.30	0.18	0.51	1.99	8
1991.....	1.36	0.17	0.52	2.05	8
1990.....	1.42	0.18	0.55	2.15	8
1989.....	1.36	0.18	0.56	2.10	7
1988.....	1.39	0.19	0.53	2.11	8
1987.....	1.38	0.20	0.61	2.20	8
1986.....	1.38	0.21	0.64	2.23	8
1985.....	1.37	0.21	0.65	2.22	8
1984.....	1.37	0.21	0.66	2.25	8
1983.....	1.41	0.22	0.67	2.29	8
1982.....	1.44	0.23	0.70	2.36	8
1981.....	1.42	0.23	0.72	2.37	8
1980.....	1.45	0.22	0.71	2.39	7
1979.....	1.42	0.22	0.73	2.37	8
1978.....	1.36	0.21	0.74	2.32	8
1977.....	1.35	0.20	0.74	2.29	8

Decile values (1 = highest) apply only to State-level data. Numbers may not sum because of rounding.

Table 3. Per capita ethanol consumption for States, census regions, and the United States, 1977–2009. [Gallons of ethanol, based on population age 14 and older] (Continued)

State or other geographic area	Per capita consumption				U.S. decile for all beverages
	Beer	Wine	Spirits	All beverages	
Rhode Island					
2009.....	1.10	0.53	0.92	2.55	4
2008.....	1.13	0.54	0.91	2.58	4
2007.....	1.13	0.54	0.90	2.56	4
2006.....	1.13	0.53	0.86	2.52	4
2005.....	1.13	0.51	0.81	2.45	4
2004.....	1.12	0.49	0.79	2.40	5
2003.....	1.12	0.51	0.79	2.42	3
2002.....	1.17	0.48	0.73	2.38	4
2001.....	1.19	0.46	0.70	2.35	4
2000.....	1.15	0.46	0.70	2.31	5
1999.....	1.14	0.45	0.69	2.28	4
1998.....	1.14	0.47	0.63	2.24	5
1997.....	1.22	0.44	0.64	2.30	4
1996.....	1.16	0.42	0.65	2.24	5
1995.....	1.19	0.38	0.60	2.17	6
1994.....	1.23	0.38	0.66	2.27	5
1993.....	1.22	0.36	0.69	2.27	6
1992.....	1.24	0.39	0.70	2.33	6
1991.....	1.33	0.37	0.71	2.41	4
1990.....	1.31	0.44	0.79	2.54	5
1989.....	1.37	0.46	0.87	2.69	3
1988.....	1.39	0.49	0.97	2.85	3
1987.....	1.40	0.51	0.94	2.85	3
1986.....	1.41	0.53	0.93	2.86	3
1985.....	1.40	0.51	1.03	2.94	3
1984.....	1.37	0.52	1.03	2.92	3
1983.....	1.48	0.50	1.06	3.04	3
1982.....	1.34	0.55	1.04	2.93	4
1981.....	1.36	0.52	1.04	2.92	4
1980.....	1.46	0.53	1.14	3.14	3
1979.....	1.46	0.50	1.11	3.07	3
1978.....	1.41	0.50	1.16	3.07	3
1977.....	1.39	0.43	1.12	2.93	4
South Carolina					
2009.....	1.36	0.24	0.77	2.37	5
2008.....	1.41	0.24	0.77	2.42	5
2007.....	1.43	0.24	0.77	2.44	5
2006.....	1.46	0.24	0.77	2.46	5
2005.....	1.41	0.24	0.76	2.41	5
2004.....	1.44	0.24	0.76	2.44	4
2003.....	1.38	0.23	0.74	2.35	5
2002.....	1.47	0.22	0.67	2.36	4
2001.....	1.45	0.22	0.65	2.32	4
2000.....	1.45	0.22	0.70	2.37	4
1999.....	1.43	0.22	0.72	2.38	3
1998.....	1.42	0.21	0.72	2.35	3
1997.....	1.40	0.19	0.71	2.30	4
1996.....	1.39	0.21	0.71	2.31	4
1995.....	1.38	0.18	0.67	2.23	5
1994.....	1.38	0.17	0.74	2.29	4

Decile values (1 = highest) apply only to State-level data. Numbers may not sum because of rounding.

Table 3. Per capita ethanol consumption for States, census regions, and the United States, 1977–2009. [Gallons of ethanol, based on population age 14 and older] (Continued)

State or other geographic area	Per capita consumption				U.S. decile for all beverages
	Beer	Wine	Spirits	All beverages	
1993.....	1.36	0.20	0.75	2.30	5
1992.....	1.34	0.20	0.79	2.33	5
1991.....	1.34	0.22	0.84	2.41	5
1990.....	1.44	0.25	0.92	2.61	4
1989.....	1.37	0.24	0.86	2.47	5
1988.....	1.37	0.26	0.89	2.51	5
1987.....	1.34	0.27	0.88	2.49	6
1986.....	1.30	0.27	0.92	2.50	6
1985.....	1.26	0.25	0.99	2.49	6
1984.....	1.26	0.24	1.00	2.50	7
1983.....	1.26	0.20	1.01	2.47	7
1982.....	1.24	0.20	1.00	2.44	7
1981.....	1.25	0.19	1.05	2.49	7
1980.....	1.22	0.18	1.06	2.46	7
1979.....	1.25	0.17	1.18	2.60	7
1978.....	1.20	0.17	1.21	2.59	7
1977.....	1.17	0.17	1.14	2.49	7
South Dakota					
2009.....	1.53	0.22	0.88	2.62	3
2008.....	1.56	0.22	0.86	2.64	3
2007.....	1.51	0.22	0.86	2.59	4
2006.....	1.51	0.19	0.79	2.48	4
2005.....	1.50	0.19	0.83	2.52	3
2004.....	1.50	0.18	0.76	2.43	4
2003.....	1.51	0.16	0.73	2.40	4
2002.....	1.51	0.16	0.70	2.37	4
2001.....	1.46	0.15	0.71	2.31	4
2000.....	1.44	0.15	0.68	2.27	5
1999.....	1.43	0.14	0.70	2.27	5
1998.....	1.42	0.13	0.68	2.24	5
1997.....	1.36	0.13	0.69	2.18	6
1996.....	1.36	0.13	0.68	2.18	6
1995.....	1.34	0.12	0.73	2.20	6
1994.....	1.38	0.12	0.73	2.24	5
1993.....	1.35	0.12	0.73	2.20	6
1992.....	1.37	0.15	0.74	2.26	6
1991.....	1.37	0.15	0.76	2.27	6
1990.....	1.36	0.18	0.80	2.34	6
1989.....	1.25	0.15	0.70	2.09	8
1988.....	1.21	0.16	0.76	2.13	8
1987.....	1.24	0.19	0.79	2.22	8
1986.....	1.22	0.19	0.81	2.23	8
1985.....	1.22	0.18	0.94	2.34	8
1984.....	1.27	0.17	0.89	2.33	7
1983.....	1.30	0.17	0.95	2.43	7
1982.....	1.29	0.18	0.98	2.45	7
1981.....	1.32	0.19	1.05	2.56	7
1980.....	1.30	0.18	1.07	2.56	7
1979.....	1.23	0.17	1.04	2.44	7
1978.....	1.19	0.17	1.05	2.42	7
1977.....	1.15	0.17	1.06	2.38	7

Decile values (1 = highest) apply only to State-level data. Numbers may not sum because of rounding.

Table 3. Per capita ethanol consumption for States, census regions, and the United States, 1977–2009. [Gallons of ethanol, based on population age 14 and older] (Continued)

State or other geographic area	Per capita consumption				U.S. decile for all beverages
	Beer	Wine	Spirits	All beverages	
Tennessee					
2009.....	1.05	0.21	0.57	1.83	10
2008.....	1.10	0.20	0.57	1.87	10
2007.....	1.13	0.20	0.56	1.89	10
2006.....	1.14	0.19	0.56	1.89	9
2005.....	1.19	0.19	0.55	1.93	9
2004.....	1.21	0.18	0.53	1.92	9
2003.....	1.26	0.18	0.52	1.96	9
2002.....	1.17	0.17	0.51	1.85	9
2001.....	1.13	0.16	0.50	1.79	9
2000.....	1.21	0.15	0.50	1.86	9
1999.....	1.21	0.15	0.49	1.86	9
1998.....	1.19	0.15	0.50	1.84	9
1997.....	1.16	0.16	0.50	1.82	9
1996.....	1.18	0.15	0.51	1.84	9
1995.....	1.18	0.15	0.52	1.84	9
1994.....	1.18	0.15	0.53	1.86	9
1993.....	1.20	0.14	0.54	1.87	9
1992.....	1.21	0.14	0.56	1.90	9
1991.....	1.19	0.13	0.54	1.87	9
1990.....	1.22	0.14	0.60	1.96	9
1989.....	1.18	0.14	0.59	1.90	9
1988.....	1.20	0.14	0.60	1.95	9
1987.....	1.17	0.15	0.62	1.94	9
1986.....	1.17	0.16	0.63	1.96	9
1985.....	1.11	0.16	0.67	1.94	9
1984.....	1.11	0.15	0.70	1.95	9
1983.....	1.10	0.14	0.69	1.93	10
1982.....	1.13	0.14	0.70	1.96	10
1981.....	1.14	0.13	0.72	1.98	10
1980.....	1.10	0.12	0.69	1.92	9
1979.....	1.14	0.11	0.73	1.98	9
1978.....	1.16	0.11	0.72	1.99	9
1977.....	1.10	0.10	0.71	1.91	10
Texas					
2009.....	1.42	0.28	0.58	2.29	7
2008.....	1.44	0.27	0.58	2.29	7
2007.....	1.41	0.27	0.56	2.25	7
2006.....	1.43	0.26	0.55	2.24	7
2005.....	1.42	0.25	0.53	2.19	7
2004.....	1.45	0.24	0.52	2.21	6
2003.....	1.46	0.23	0.51	2.19	6
2002.....	1.50	0.22	0.50	2.21	6
2001.....	1.51	0.21	0.49	2.21	6
2000.....	1.53	0.22	0.50	2.25	6
1999.....	1.54	0.20	0.49	2.23	6
1998.....	1.53	0.23	0.49	2.25	5
1997.....	1.54	0.20	0.47	2.22	5
1996.....	1.56	0.22	0.49	2.26	5
1995.....	1.55	0.19	0.49	2.23	5
1994.....	1.60	0.20	0.51	2.31	4

Decile values (1 = highest) apply only to State-level data. Numbers may not sum because of rounding.

Table 3. Per capita ethanol consumption for States, census regions, and the United States, 1977–2009. [Gallons of ethanol, based on population age 14 and older] (Continued)

State or other geographic area	Per capita consumption				U.S. decile for all beverages
	Beer	Wine	Spirits	All beverages	
1993.....	1.60	0.20	0.53	2.33	4
1992.....	1.65	0.24	0.55	2.45	4
1991.....	1.60	0.25	0.55	2.40	5
1990.....	1.64	0.26	0.58	2.47	6
1989.....	1.62	0.26	0.58	2.46	5
1988.....	1.61	0.28	0.59	2.47	6
1987.....	1.61	0.29	0.61	2.51	6
1986.....	1.67	0.31	0.65	2.63	5
1985.....	1.68	0.30	0.73	2.70	5
1984.....	1.74	0.28	0.79	2.82	4
1983.....	1.73	0.27	0.79	2.79	5
1982.....	1.83	0.18	0.84	2.85	4
1981.....	1.84	0.24	0.85	2.93	4
1980.....	1.77	0.22	0.81	2.80	6
1979.....	1.76	0.14	0.87	2.77	5
1978.....	1.70	0.14	0.84	2.68	6
1977.....	1.63	0.14	0.81	2.58	6
Utah					
2009.....	0.70	0.17	0.46	1.33	10
2008.....	0.75	0.17	0.46	1.37	10
2007.....	0.75	0.16	0.43	1.34	10
2006.....	0.71	0.16	0.43	1.30	10
2005.....	0.69	0.16	0.41	1.26	10
2004.....	0.75	0.15	0.39	1.28	10
2003.....	0.77	0.15	0.39	1.31	10
2002.....	0.78	0.14	0.39	1.31	10
2001.....	0.76	0.14	0.39	1.29	10
2000.....	0.77	0.11	0.40	1.27	10
1999.....	0.79	0.10	0.38	1.27	10
1998.....	0.73	0.10	0.37	1.20	10
1997.....	0.76	0.10	0.39	1.25	10
1996.....	0.77	0.10	0.37	1.24	10
1995.....	0.75	0.09	0.37	1.21	10
1994.....	0.76	0.09	0.38	1.24	10
1993.....	0.78	0.11	0.39	1.28	10
1992.....	0.79	0.12	0.42	1.33	10
1991.....	0.80	0.12	0.43	1.34	10
1990.....	0.80	0.12	0.46	1.39	10
1989.....	0.82	0.13	0.47	1.42	10
1988.....	0.83	0.14	0.49	1.45	10
1987.....	0.84	0.15	0.50	1.49	10
1986.....	0.89	0.17	0.52	1.58	10
1985.....	0.90	0.15	0.53	1.58	10
1984.....	0.88	0.14	0.52	1.53	10
1983.....	0.88	0.14	0.50	1.52	10
1982.....	1.01	0.15	0.55	1.71	10
1981.....	1.01	0.15	0.58	1.74	10
1980.....	0.96	0.14	0.60	1.71	10
1979.....	0.97	0.16	0.62	1.75	10
1978.....	0.96	0.15	0.61	1.72	10
1977.....	0.97	0.14	0.59	1.70	10

Decile values (1 = highest) apply only to State-level data. Numbers may not sum because of rounding.

Table 3. Per capita ethanol consumption for States, census regions, and the United States, 1977–2009. [Gallons of ethanol, based on population age 14 and older] (Continued)

State or other geographic area	Per capita consumption				U.S. decile for all beverages
	Beer	Wine	Spirits	All beverages	
Vermont					
2009.....	1.36	0.63	0.70	2.69	2
2008.....	1.37	0.62	0.71	2.70	3
2007.....	1.37	0.61	0.70	2.68	3
2006.....	1.35	0.58	0.69	2.62	3
2005.....	1.33	0.56	0.67	2.56	3
2004.....	1.32	0.54	0.66	2.52	3
2003.....	1.32	0.51	0.64	2.47	3
2002.....	1.32	0.49	0.63	2.44	3
2001.....	1.29	0.47	0.63	2.39	4
2000.....	1.23	0.47	0.63	2.34	4
1999.....	1.23	0.47	0.62	2.32	4
1998.....	1.25	0.47	0.62	2.34	4
1997.....	1.23	0.46	0.63	2.33	4
1996.....	1.29	0.46	0.64	2.38	3
1995.....	1.27	0.41	0.66	2.34	3
1994.....	1.34	0.42	0.74	2.50	3
1993.....	1.34	0.44	0.74	2.52	2
1992.....	1.35	0.44	0.78	2.57	3
1991.....	1.41	0.46	0.82	2.69	2
1990.....	1.47	0.48	0.85	2.80	2
1989.....	1.45	0.51	0.88	2.84	2
1988.....	1.51	0.56	0.93	3.00	2
1987.....	1.56	0.58	0.98	3.11	1
1986.....	1.55	0.59	1.04	3.17	1
1985.....	1.49	0.55	1.09	3.13	2
1984.....	1.48	0.49	1.15	3.12	2
1983.....	1.52	0.50	1.19	3.21	2
1982.....	1.49	0.50	1.25	3.24	2
1981.....	1.49	0.50	1.33	3.32	2
1980.....	1.43	0.48	1.39	3.30	2
1979.....	1.57	0.47	1.50	3.54	1
1978.....	1.53	0.47	1.59	3.59	1
1977.....	1.42	0.44	1.58	3.44	1
Virginia					
2009.....	1.11	0.43	0.59	2.13	8
2008.....	1.14	0.42	0.59	2.14	8
2007.....	1.13	0.41	0.58	2.13	8
2006.....	1.14	0.39	0.57	2.10	8
2005.....	1.13	0.38	0.55	2.06	8
2004.....	1.14	0.37	0.54	2.06	8
2003.....	1.14	0.36	0.53	2.03	8
2002.....	1.15	0.34	0.51	2.00	8
2001.....	1.15	0.32	0.50	1.98	8
2000.....	1.16	0.31	0.50	1.97	8
1999.....	1.18	0.32	0.47	1.96	8
1998.....	1.18	0.29	0.47	1.94	8
1997.....	1.13	0.29	0.48	1.90	8
1996.....	1.13	0.30	0.49	1.92	8
1995.....	1.15	0.29	0.49	1.93	8
1994.....	1.20	0.27	0.51	1.99	8

Decile values (1 = highest) apply only to State-level data. Numbers may not sum because of rounding.

Table 3. Per capita ethanol consumption for States, census regions, and the United States, 1977–2009. [Gallons of ethanol, based on population age 14 and older] (Continued)

State or other geographic area	Per capita consumption				U.S. decile for all beverages
	Beer	Wine	Spirits	All beverages	
1993.....	1.24	0.27	0.54	2.05	8
1992.....	1.25	0.28	0.57	2.10	7
1991.....	1.20	0.28	0.58	2.06	8
1990.....	1.25	0.30	0.62	2.18	8
1989.....	1.23	0.31	0.65	2.19	7
1988.....	1.31	0.25	0.68	2.24	7
1987.....	1.40	0.26	0.71	2.36	7
1986.....	1.52	0.27	0.73	2.53	6
1985.....	1.46	0.30	0.79	2.55	6
1984.....	1.46	0.29	0.80	2.55	6
1983.....	1.47	0.27	0.82	2.57	6
1982.....	1.45	0.27	0.86	2.59	6
1981.....	1.23	0.27	0.89	2.39	7
1980.....	1.23	0.25	0.91	2.39	7
1979.....	1.23	0.25	0.92	2.40	8
1978.....	1.22	0.21	0.90	2.33	8
1977.....	1.19	0.21	0.90	2.30	7
Washington					
2009.....	1.09	0.51	0.74	2.34	6
2008.....	1.09	0.50	0.76	2.35	6
2007.....	1.11	0.50	0.74	2.35	6
2006.....	1.05	0.48	0.71	2.24	7
2005.....	1.10	0.55	0.68	2.33	6
2004.....	1.04	0.46	0.69	2.20	7
2003.....	1.05	0.46	0.67	2.19	7
2002.....	1.08	0.42	0.65	2.16	7
2001.....	1.08	0.40	0.65	2.13	7
2000.....	1.09	0.41	0.66	2.16	7
1999.....	1.10	0.40	0.63	2.13	7
1998.....	1.12	0.43	0.63	2.18	6
1997.....	1.11	0.42	0.63	2.16	6
1996.....	1.13	0.40	0.63	2.16	6
1995.....	1.14	0.40	0.63	2.17	6
1994.....	1.18	0.39	0.65	2.23	6
1993.....	1.19	0.39	0.69	2.27	5
1992.....	1.26	0.46	0.72	2.44	4
1991.....	1.23	0.43	0.73	2.39	5
1990.....	1.27	0.46	0.76	2.49	5
1989.....	1.24	0.47	0.75	2.45	5
1988.....	1.22	0.50	0.77	2.49	5
1987.....	1.23	0.56	0.79	2.58	5
1986.....	1.23	0.61	0.82	2.65	5
1985.....	1.22	0.59	0.87	2.68	5
1984.....	1.24	0.57	0.91	2.71	5
1983.....	1.29	0.54	0.94	2.76	5
1982.....	1.33	0.53	0.99	2.85	4
1981.....	1.38	0.54	1.05	2.97	4
1980.....	1.52	0.52	1.08	3.12	3
1979.....	1.41	0.48	1.10	2.99	4
1978.....	1.39	0.48	1.09	2.96	4
1977.....	1.36	0.45	1.08	2.89	4

Decile values (1 = highest) apply only to State-level data. Numbers may not sum because of rounding.

Table 3. Per capita ethanol consumption for States, census regions, and the United States, 1977–2009. [Gallons of ethanol, based on population age 14 and older] (Continued)

State or other geographic area	Per capita consumption				U.S. decile for all beverages
	Beer	Wine	Spirits	All beverages	
West Virginia					
2009.....	1.24	0.10	0.45	1.79	10
2008.....	1.26	0.10	0.44	1.80	10
2007.....	1.24	0.10	0.42	1.76	10
2006.....	1.22	0.10	0.42	1.74	10
2005.....	1.23	0.10	0.40	1.73	10
2004.....	1.25	0.10	0.39	1.75	10
2003.....	1.23	0.10	0.38	1.71	10
2002.....	1.26	0.10	0.38	1.74	10
2001.....	1.23	0.10	0.37	1.70	10
2000.....	1.18	0.10	0.35	1.64	10
1999.....	1.18	0.10	0.37	1.66	10
1998.....	1.17	0.10	0.36	1.63	10
1997.....	1.14	0.10	0.37	1.60	10
1996.....	1.14	0.10	0.37	1.61	10
1995.....	1.14	0.09	0.38	1.61	10
1994.....	1.17	0.08	0.39	1.64	10
1993.....	1.18	0.08	0.40	1.67	10
1992.....	1.16	0.09	0.41	1.66	10
1991.....	1.18	0.09	0.43	1.70	10
1990.....	1.20	0.10	0.42	1.72	10
1989.....	1.12	0.11	0.38	1.60	10
1988.....	1.12	0.12	0.40	1.64	10
1987.....	1.11	0.13	0.41	1.64	10
1986.....	1.10	0.13	0.41	1.64	10
1985.....	1.11	0.13	0.42	1.66	10
1984.....	1.12	0.12	0.44	1.68	10
1983.....	1.13	0.13	0.48	1.74	10
1982.....	1.11	0.14	0.55	1.80	10
1981.....	1.06	0.14	0.66	1.85	10
1980.....	1.00	0.09	0.72	1.82	10
1979.....	0.97	0.09	0.77	1.83	10
1978.....	0.96	0.09	0.79	1.84	10
1977.....	0.98	0.09	0.78	1.85	10
Wisconsin					
2009.....	1.49	0.31	1.16	2.96	2
2008.....	1.53	0.34	1.12	2.99	2
2007.....	1.54	0.33	1.11	2.98	1
2006.....	1.56	0.32	1.09	2.96	1
2005.....	1.55	0.31	1.07	2.92	1
2004.....	1.52	0.30	1.01	2.83	1
2003.....	1.52	0.29	1.00	2.81	2
2002.....	1.56	0.28	0.98	2.81	2
2001.....	1.53	0.26	0.95	2.74	2
2000.....	1.54	0.27	0.95	2.76	1
1999.....	1.53	0.26	0.92	2.72	2
1998.....	1.61	0.26	0.79	2.65	2
1997.....	1.57	0.25	0.89	2.71	1
1996.....	1.53	0.24	0.88	2.65	1
1995.....	1.55	0.23	0.87	2.65	1
1994.....	1.58	0.22	0.91	2.72	2

Decile values (1 = highest) apply only to State-level data. Numbers may not sum because of rounding.

Table 3. Per capita ethanol consumption for States, census regions, and the United States, 1977–2009. [Gallons of ethanol, based on population age 14 and older] (Continued)

State or other geographic area	Per capita consumption				U.S. decile for all beverages
	Beer	Wine	Spirits	All beverages	
1993.....	1.59	0.22	0.89	2.71	1
1992.....	1.59	0.25	0.90	2.74	2
1991.....	1.65	0.27	0.84	2.76	1
1990.....	1.74	0.31	1.03	3.07	1
1989.....	1.71	0.31	0.95	2.96	1
1988.....	1.75	0.33	0.95	3.02	2
1987.....	1.78	0.36	0.97	3.11	2
1986.....	1.87	0.34	0.95	3.16	2
1985.....	1.82	0.32	1.05	3.19	1
1984.....	1.86	0.30	1.03	3.19	2
1983.....	1.93	0.33	1.07	3.33	2
1982.....	1.93	0.30	1.04	3.27	2
1981.....	1.95	0.31	1.20	3.47	1
1980.....	1.96	0.31	1.20	3.46	1
1979.....	1.88	0.28	1.17	3.33	3
1978.....	1.80	0.28	1.18	3.25	2
1977.....	1.78	0.27	1.26	3.31	2
Wyoming					
2009.....	1.45	0.22	1.10	2.77	2
2008.....	1.54	0.23	1.12	2.89	2
2007.....	1.49	0.23	1.10	2.82	2
2006.....	1.47	0.23	1.05	2.74	2
2005.....	1.21	0.23	0.97	2.40	5
2004.....	1.41	0.22	0.92	2.55	3
2003.....	1.69	0.23	0.90	2.82	1
2002.....	1.46	0.22	0.88	2.56	2
2001.....	1.43	0.22	0.88	2.52	2
2000.....	1.42	0.18	0.86	2.46	3
1999.....	1.41	0.18	0.84	2.43	3
1998.....	1.38	0.20	0.81	2.40	3
1997.....	1.36	0.17	0.81	2.33	3
1996.....	1.37	0.16	0.81	2.34	3
1995.....	1.34	0.16	0.80	2.29	4
1994.....	1.42	0.18	0.83	2.43	3
1993.....	1.40	0.19	0.86	2.45	3
1992.....	1.44	0.20	0.91	2.56	3
1991.....	1.45	0.20	0.90	2.56	3
1990.....	1.48	0.22	0.93	2.63	3
1989.....	1.35	0.22	0.82	2.38	6
1988.....	1.39	0.23	0.83	2.46	6
1987.....	1.46	0.24	0.86	2.56	5
1986.....	1.46	0.26	0.92	2.64	5
1985.....	1.56	0.25	1.03	2.84	3
1984.....	1.58	0.22	1.05	2.86	4
1983.....	1.66	0.22	1.09	2.98	4
1982.....	1.80	0.24	1.21	3.25	2
1981.....	1.91	0.24	1.27	3.42	2
1980.....	1.85	0.24	1.32	3.42	2
1979.....	1.86	0.22	1.30	3.38	2
1978.....	1.82	0.22	1.36	3.41	2
1977.....	1.79	0.21	1.32	3.31	2

Decile values (1 = highest) apply only to State-level data. Numbers may not sum because of rounding.

Table 3. Per capita ethanol consumption for States, census regions, and the United States, 1977–2009. [Gallons of ethanol, based on population age 14 and older] (Continued)

State or other geographic area	Per capita consumption				U.S. decile for all beverages
	Beer	Wine	Spirits	All beverages	
Northeast region					
2009.....	1.06	0.46	0.76	2.29	
2008.....	1.08	0.46	0.75	2.29	
2007.....	1.06	0.46	0.75	2.28	
2006.....	1.06	0.45	0.73	2.24	
2005.....	1.05	0.43	0.72	2.20	
2004.....	1.07	0.43	0.70	2.19	
2003.....	1.07	0.41	0.68	2.17	
2002.....	1.10	0.40	0.66	2.16	
2001.....	1.10	0.38	0.64	2.12	
2000.....	1.06	0.38	0.66	2.10	
1999.....	1.05	0.38	0.63	2.06	
1998.....	1.07	0.37	0.60	2.04	
1997.....	1.06	0.36	0.63	2.06	
1996.....	1.08	0.36	0.64	2.07	
1995.....	1.09	0.36	0.64	2.09	
1994.....	1.11	0.34	0.67	2.12	
1993.....	1.13	0.34	0.68	2.15	
1992.....	1.14	0.35	0.72	2.21	
1991.....	1.19	0.34	0.73	2.26	
1990.....	1.23	0.38	0.80	2.41	
1989.....	1.22	0.39	0.84	2.44	
1988.....	1.25	0.40	0.86	2.52	
1987.....	1.25	0.43	0.91	2.60	
1986.....	1.25	0.44	0.93	2.62	
1985.....	1.25	0.43	0.98	2.66	
1984.....	1.25	0.43	1.01	2.70	
1983.....	1.31	0.43	1.03	2.76	
1982.....	1.31	0.43	1.05	2.79	
1981.....	1.31	0.41	1.07	2.80	
1980.....	1.34	0.40	1.10	2.84	
1979.....	1.30	0.38	1.09	2.77	
1978.....	1.26	0.36	1.10	2.73	
1977.....	1.25	0.34	1.10	2.69	
Midwest region					
2009.....	1.25	0.30	0.77	2.31	
2008.....	1.27	0.29	0.76	2.32	
2007.....	1.27	0.30	0.74	2.30	
2006.....	1.26	0.28	0.72	2.26	
2005.....	1.26	0.27	0.71	2.23	
2004.....	1.27	0.26	0.68	2.20	
2003.....	1.28	0.26	0.69	2.22	
2002.....	1.30	0.24	0.65	2.20	
2001.....	1.29	0.24	0.66	2.18	
2000.....	1.29	0.23	0.66	2.18	
1999.....	1.29	0.24	0.65	2.17	
1998.....	1.28	0.23	0.63	2.14	
1997.....	1.26	0.23	0.63	2.12	
1996.....	1.27	0.23	0.62	2.12	
1995.....	1.27	0.22	0.63	2.12	
1994.....	1.30	0.22	0.63	2.14	

Decile values (1 = highest) apply only to State-level data. Numbers may not sum because of rounding.

Table 3. Per capita ethanol consumption for States, census regions, and the United States, 1977–2009. [Gallons of ethanol, based on population age 14 and older] (Continued)

State or other geographic area	Per capita consumption				U.S. decile for all beverages
	Beer	Wine	Spirits	All beverages	
1993.....	1.30	0.22	0.67	2.18	
1992.....	1.31	0.23	0.68	2.21	
1991.....	1.35	0.23	0.67	2.25	
1990.....	1.38	0.26	0.74	2.37	
1989.....	1.34	0.26	0.71	2.31	
1988.....	1.36	0.28	0.74	2.38	
1987.....	1.37	0.29	0.76	2.42	
1986.....	1.37	0.30	0.78	2.44	
1985.....	1.37	0.28	0.83	2.48	
1984.....	1.39	0.27	0.84	2.50	
1983.....	1.41	0.25	0.87	2.53	
1982.....	1.42	0.27	0.88	2.56	
1981.....	1.42	0.26	0.93	2.61	
1980.....	1.42	0.24	0.96	2.63	
1979.....	1.41	0.23	0.95	2.58	
1978.....	1.35	0.22	0.96	2.53	
1977.....	1.32	0.21	0.96	2.49	
South region					
2009.....	1.22	0.31	0.69	2.23	
2008.....	1.25	0.31	0.69	2.25	
2007.....	1.26	0.31	0.68	2.25	
2006.....	1.27	0.30	0.67	2.24	
2005.....	1.25	0.29	0.66	2.20	
2004.....	1.27	0.29	0.64	2.20	
2003.....	1.27	0.27	0.64	2.18	
2002.....	1.29	0.26	0.62	2.17	
2001.....	1.29	0.25	0.60	2.14	
2000.....	1.30	0.25	0.61	2.16	
1999.....	1.30	0.25	0.60	2.15	
1998.....	1.28	0.24	0.60	2.12	
1997.....	1.28	0.23	0.60	2.12	
1996.....	1.29	0.24	0.61	2.14	
1995.....	1.29	0.22	0.61	2.12	
1994.....	1.31	0.22	0.64	2.16	
1993.....	1.33	0.22	0.66	2.20	
1992.....	1.33	0.23	0.69	2.26	
1991.....	1.31	0.23	0.69	2.23	
1990.....	1.36	0.26	0.74	2.36	
1989.....	1.33	0.26	0.73	2.31	
1988.....	1.33	0.27	0.74	2.34	
1987.....	1.33	0.27	0.77	2.37	
1986.....	1.35	0.28	0.79	2.42	
1985.....	1.33	0.27	0.85	2.46	
1984.....	1.34	0.27	0.90	2.51	
1983.....	1.36	0.25	0.91	2.52	
1982.....	1.37	0.23	0.95	2.55	
1981.....	1.36	0.24	0.98	2.58	
1980.....	1.31	0.23	0.98	2.51	
1979.....	1.32	0.21	1.03	2.55	
1978.....	1.29	0.20	1.03	2.52	
1977.....	1.25	0.19	1.01	2.44	

Decile values (1 = highest) apply only to State-level data. Numbers may not sum because of rounding.

Table 3. Per capita ethanol consumption for States, census regions, and the United States, 1977–2009. [Gallons of ethanol, based on population age 14 and older] (Continued)

State or other geographic area	Per capita consumption				U.S. decile for all beverages
	Beer	Wine	Spirits	All beverages	
West region					
2009.....	1.12	0.51	0.77	2.40	
2008.....	1.15	0.51	0.77	2.43	
2007.....	1.17	0.50	0.77	2.43	
2006.....	1.14	0.49	0.75	2.39	
2005.....	1.12	0.48	0.73	2.33	
2004.....	1.15	0.47	0.71	2.33	
2003.....	1.16	0.46	0.69	2.31	
2002.....	1.18	0.44	0.68	2.30	
2001.....	1.19	0.43	0.68	2.30	
2000.....	1.18	0.43	0.67	2.29	
1999.....	1.19	0.42	0.65	2.27	
1998.....	1.19	0.42	0.65	2.25	
1997.....	1.20	0.43	0.65	2.28	
1996.....	1.21	0.43	0.67	2.30	
1995.....	1.22	0.40	0.66	2.28	
1994.....	1.20	0.41	0.70	2.31	
1993.....	1.26	0.42	0.72	2.39	
1992.....	1.33	0.45	0.76	2.54	
1991.....	1.30	0.44	0.76	2.50	
1990.....	1.37	0.50	0.84	2.71	
1989.....	1.36	0.51	0.84	2.71	
1988.....	1.37	0.57	0.87	2.80	
1987.....	1.39	0.62	0.89	2.90	
1986.....	1.40	0.65	0.92	2.98	
1985.....	1.37	0.65	1.00	3.02	
1984.....	1.41	0.61	1.04	3.05	
1983.....	1.42	0.61	1.07	3.11	
1982.....	1.45	0.60	1.11	3.15	
1981.....	1.49	0.60	1.16	3.26	
1980.....	1.48	0.59	1.20	3.26	
1979.....	1.49	0.58	1.24	3.31	
1978.....	1.43	0.56	1.27	3.26	
1977.....	1.38	0.54	1.22	3.15	
U.S. total					
2009.....	1.17	0.38	0.74	2.30	
2008.....	1.20	0.38	0.73	2.32	
2007.....	1.21	0.38	0.73	2.31	
2006.....	1.20	0.37	0.71	2.28	
2005.....	1.19	0.36	0.70	2.24	
2004.....	1.21	0.35	0.68	2.23	
2003.....	1.21	0.34	0.67	2.22	
2002.....	1.23	0.33	0.65	2.20	
2001.....	1.23	0.31	0.64	2.18	
2000.....	1.22	0.31	0.65	2.18	
1999.....	1.23	0.31	0.63	2.16	
1998.....	1.22	0.30	0.62	2.14	
1997.....	1.22	0.30	0.62	2.14	
1996.....	1.23	0.30	0.63	2.16	
1995.....	1.23	0.29	0.63	2.15	
1994.....	1.25	0.28	0.65	2.18	

Decile values (1 = highest) apply only to State-level data. Numbers may not sum because of rounding.

Table 3. Per capita ethanol consumption for States, census regions, and the United States, 1977–2009. [Gallons of ethanol, based on population age 14 and older] (Continued)

State or other geographic area	Per capita consumption				U.S. decile for all beverages
	Beer	Wine	Spirits	All beverages	
1993.....	1.26	0.28	0.68	2.23	
1992.....	1.29	0.30	0.71	2.30	
1991.....	1.29	0.30	0.71	2.30	
1990.....	1.34	0.33	0.77	2.45	
1989.....	1.31	0.34	0.77	2.42	
1988.....	1.33	0.36	0.79	2.48	
1987.....	1.34	0.38	0.82	2.54	
1986.....	1.34	0.39	0.84	2.58	
1985.....	1.33	0.38	0.90	2.62	
1984.....	1.35	0.37	0.94	2.65	
1983.....	1.37	0.36	0.96	2.69	
1982.....	1.38	0.36	0.98	2.72	
1981.....	1.39	0.35	1.02	2.76	
1980.....	1.38	0.34	1.04	2.76	
1979.....	1.37	0.32	1.06	2.75	
1978.....	1.33	0.31	1.07	2.71	
1977.....	1.29	0.29	1.06	2.64	

^a There are minor changes in the data for wine and spirits consumption for 2008 due to revisions to the State data.

^b There are minor changes in the data for beer and wine consumption for 2006–2008, as State data have replaced the industry data that were used previously.

Decile values (1 = highest) apply only to State-level data. Numbers may not sum because of rounding.